



Schenectady City School District

Long Range Facilities Program
Phase I

Referendum March 25, 2014

INVESTING IN EQUITY

Vision

Our schools will provide all students with an equal opportunity to reach their potential and have their individual needs met in a challenging and stimulating learning environment, while serving as centers of our neighborhoods.

Our schools should provide:

- Equitable opportunities and educational choices district-wide that are accessible to all students in setting that are large enough to be cost-efficient, yet small enough to address the personalized needs of the whole child.
- A safe, healthy and nurturing climate for all students that supports a culture of respect and responsiveness, in state-of-the-art buildings reflecting a sense of community pride in the schools and our children.

INVESTING IN EQUITY

The Long Range Planning Renewal Program includes work to all of the district schools and will ensure regular ongoing maintenance, moderate reconstruction and renovation of school buildings.

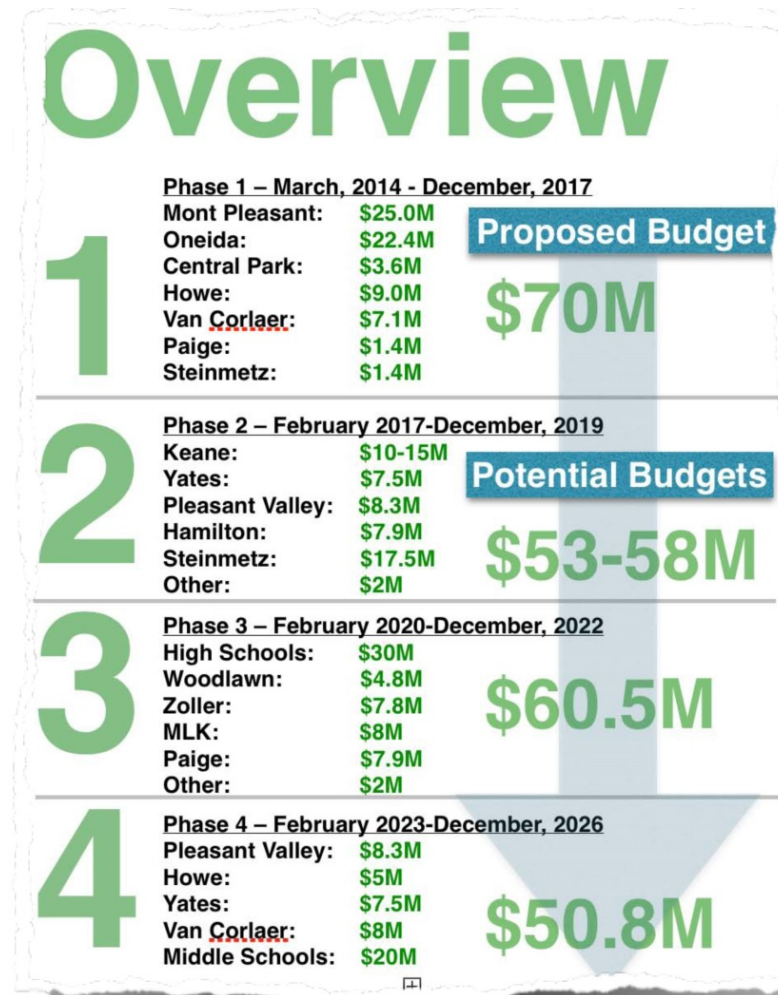
The plan addresses:

- Overcrowding in some schools
- Forecasted enrollment shifts across the city
- Equity issues
- Deteriorating conditions in some of the district's oldest buildings.

INVESTING IN EQUITY

Long Range Plan

- The long range facilities plan includes work to all of the district schools.
- There is a limit on how much a district can invest at one time.
- The work will be done in phases.



INVESTING IN EQUITY

Age of SCSD Schools
Projected Schedule for Long Term Renewal Program

Building	Year Built	Age	Anticipated Capital Project Work
Elmer Avenue	1905	108	Building in extremely poor condition. Not recommended to invest in building. Set to close in 2016
Fulton	1905	108	TBD
Lincoln	1908	105	TBD
Steinmetz	1908	105	Phase I – 2014 Phase II - 2017
Central Park	1910	103	Phase I – 2014
Van Corlaer	1910	103	Phase I – 2014 Phase IV-2023
Yates	1913	100	Phase II – 2017 Phase IV- 2024
Hamilton	1914	99	Phase II - 2017
Oneida	1917	96	Phase I – 2014
Pleasant Valley	1922	92	Phase IV - 2023
Howe	1923	90	Phase I -2014 Phase IV - 2024
Mont Pleasant	1930	83	Phase I - 2014
Paige	1953	60	Phase I – 2014 Phase III - 2020
Keane	1954	59	Phase II - 2017
Zoller	1955	58	Phase III - 2020
Schenectady HS	1957	56	Phase III - 2020
ML King	1966	47	Phase III - 2020
Woodlawn	1972	41	Phase III - 2020

School Grade Configurations

In September 2016, the district-wide school grade level configurations will change to:

- PreK-5 Elementary Schools
- 6-8 Middle Schools
- 9-12 High School

This plan has been adopted by the Board of Education and will be implemented in 2016.

Phase I

Middle Schools

- Upgrading and Redesign to properly implement unique middle school program.

Phase I includes renovations to Oneida, Mont Pleasant and Central Park so that they can open as Grade 6-8 Middle Schools in September 2016.

Work will be done to create small learning communities within the schools.

Phase I

Adding Elementary Capacity

- Classrooms will be added to Howe to increase capacity so that the Early Childhood Education Center can be converted to a PreK-5 elementary school in 2016

Other Priority Work

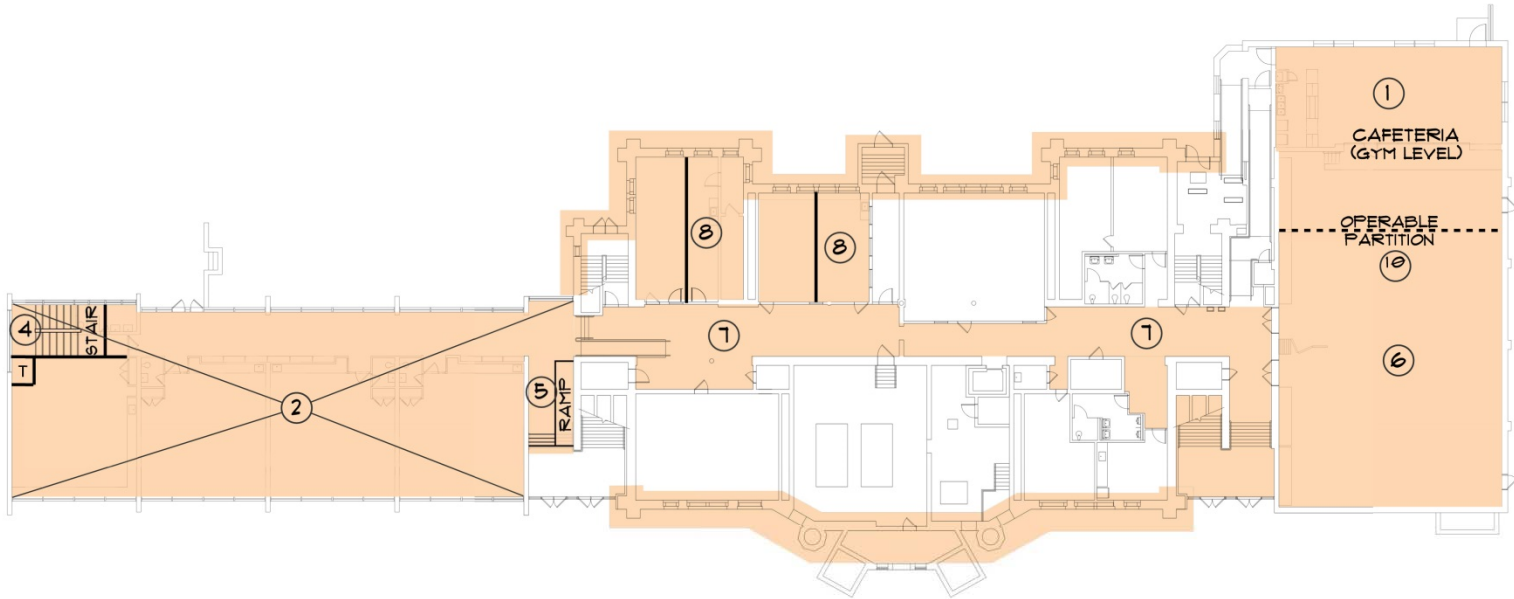
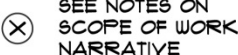
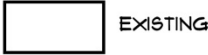
- The BCS provides recommended improvements to address many building facility deficiencies. Priority work will be completed at Van Corlaer, Paige and Steinmetz.

Howe PreK-5 Elementary \$9 Million

- Remove stage floor, kitchen equipment and infrastructure. Provide new floor assembly at gym floor level. Provide food holding, warming and serving line equipment, wall mounted retractable tables, gym divider curtain and access door to the elevator.
- Remove roof structure, ceiling and lighting.
- Provide new ceiling and lighting.
- Provide new second floor addition and structure for foundations, columns, floor, wall and roof structure.
- Replace HVAC and lighting.
- Remove existing stair assembly and provide ramp and handrail assembly.
- Provide new stair tower and stair assembly.
- Provide new wall mounted, retractable tables and athletic wall pads.
- Patch and paint walls.
- Provide new partition doors, floor, wall and ceiling finishes.
- Provide integrated security door hardware and camera/phone systems.

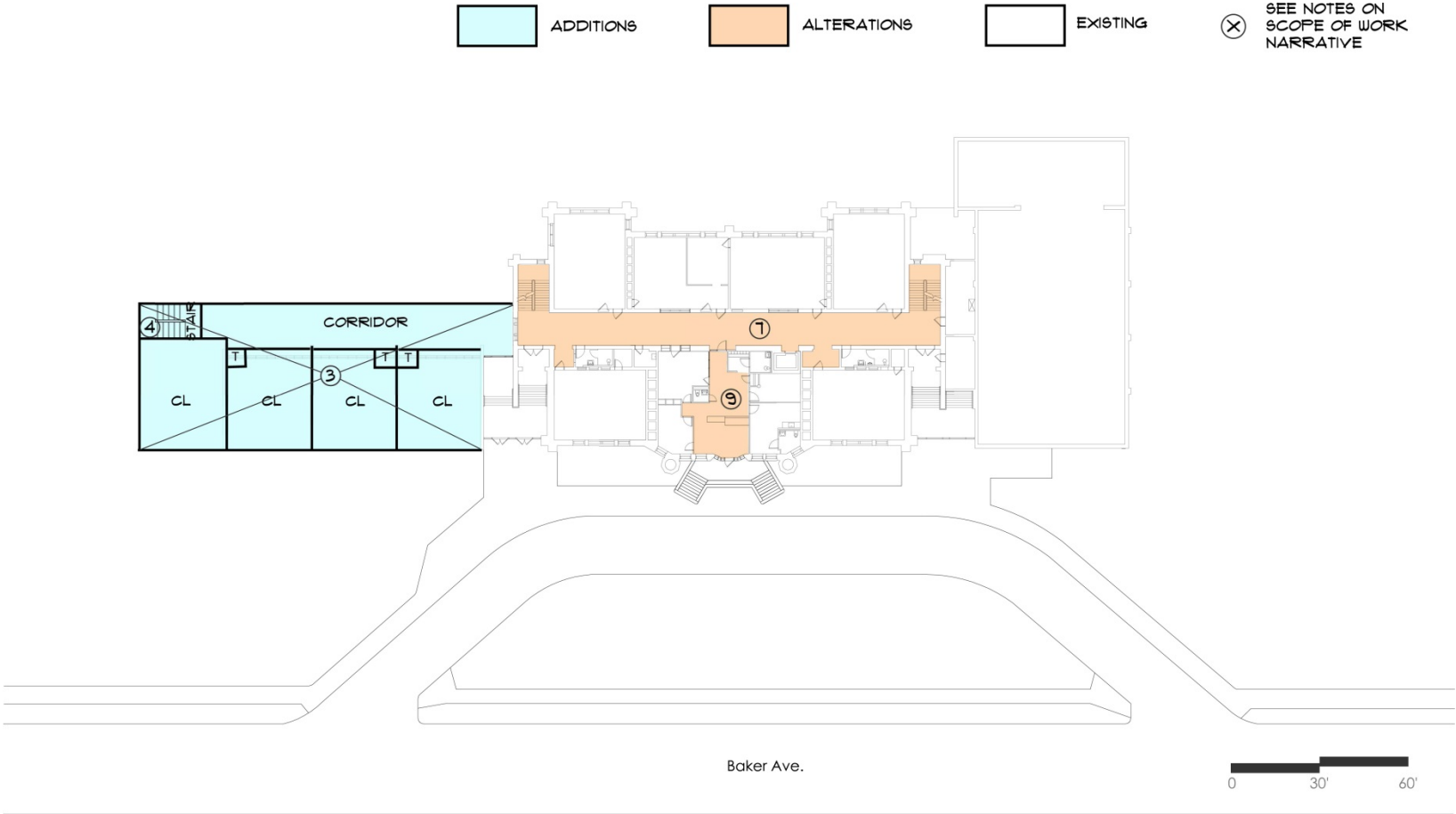
Howe PreK – 5 Elementary School

Ground Floor



Howe PreK – 5 Elementary School

First Floor



PROPOSED ALTERATIONS - FIRST FLOOR
HOWE ELEMENTARY SCHOOL

2.5.14

HAMLIN
DESIGN GROUP

MOSAIC
ASSOCIATES

Howe PreK – 5 Elementary School

Second Floor

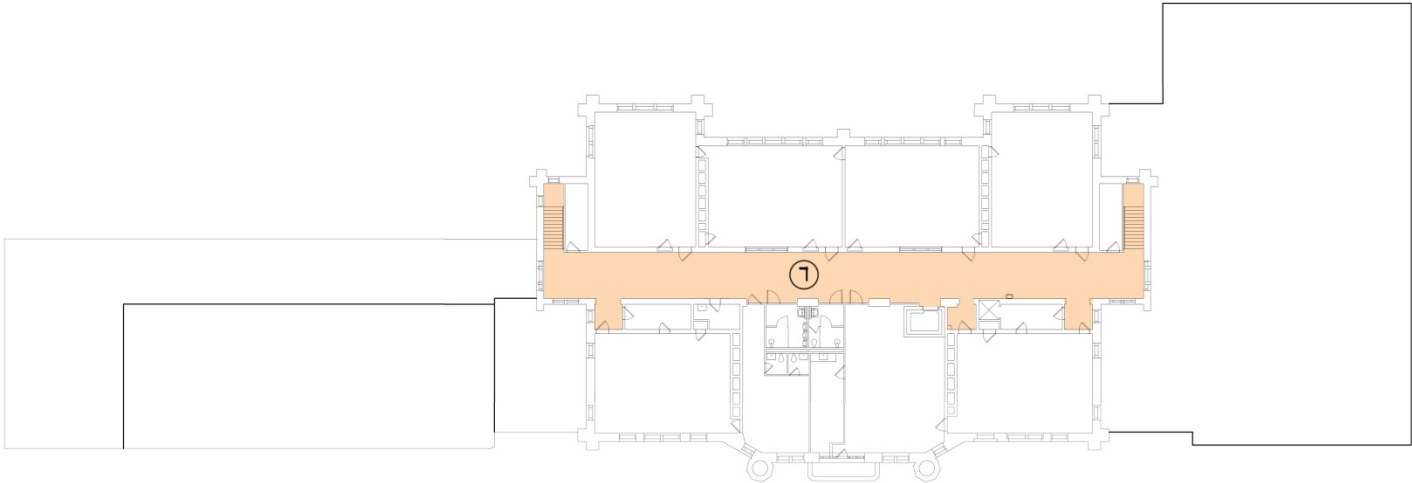
ADDITIONS

ALTERATIONS

EXISTING

⊗

 SEE NOTES ON
SCOPE OF WORK
NARRATIVE



PROPOSED ALTERATIONS - SECOND FLOOR
HOWE ELEMENTARY SCHOOL

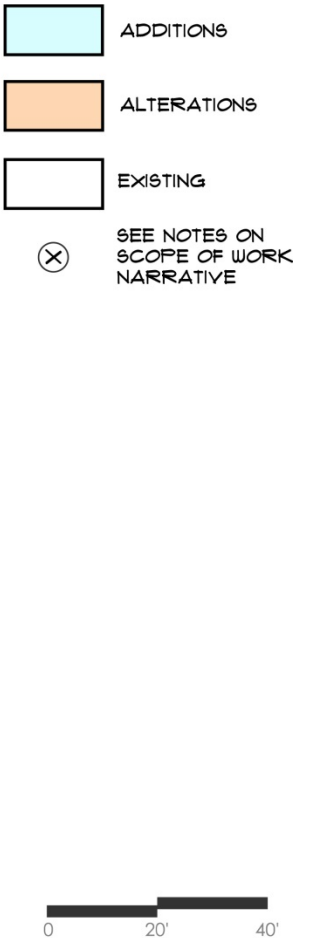
2. 5. 14



Van Corlaer PreK-5 Elementary School

\$7.1 Million

- Renovate ground floor classrooms
- Relocate faculty room
- Install new exterior door
- Install ADA elevator
- Create small group rooms
- Install skylights at second floor and stage area rooms
- Install new elevator and lobby
- Install new ADA bathroom
- Install portable stage
- Infrastructure improvement as per BCS

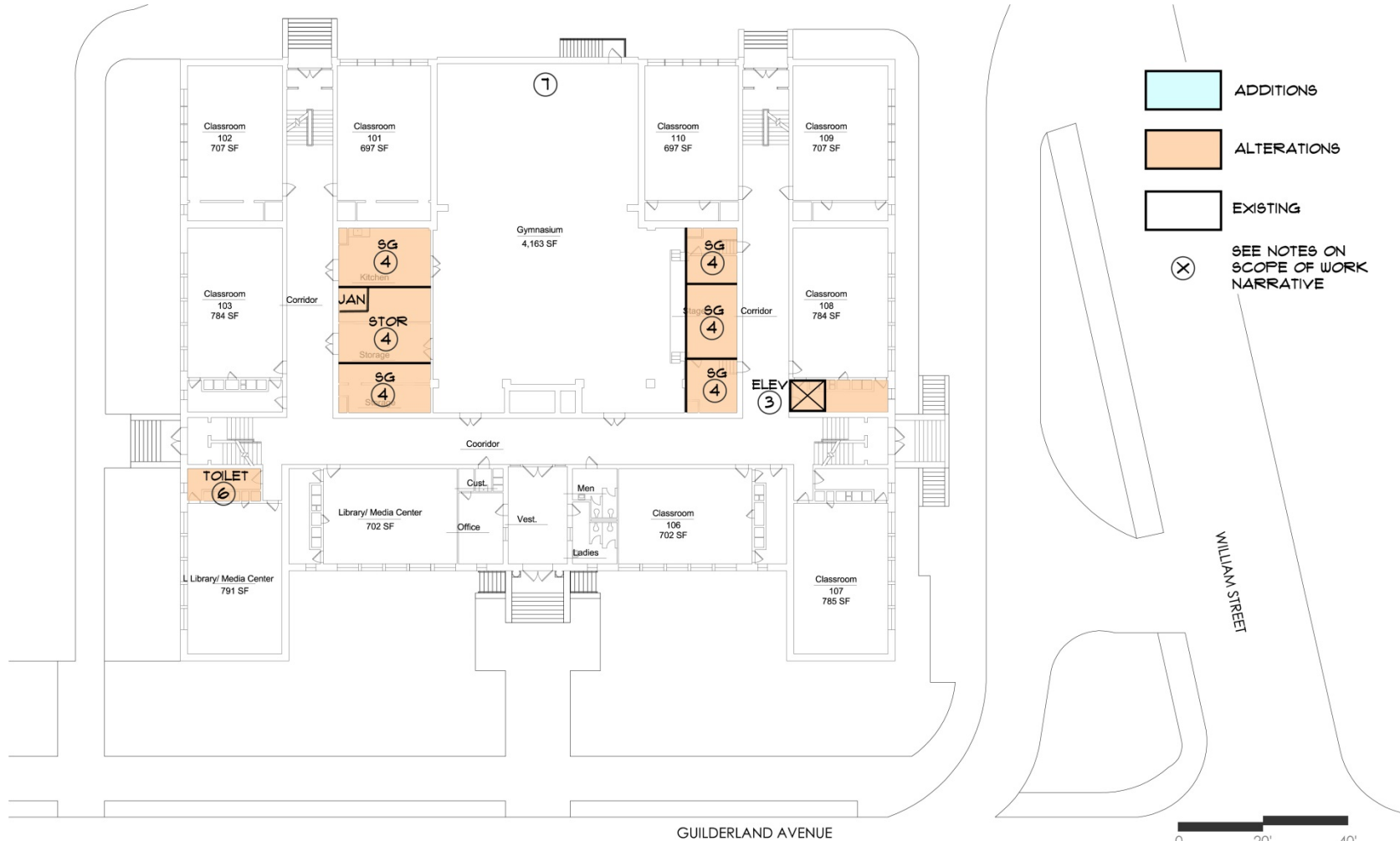


PROPOSED ALTERATIONS - GROUND FLOOR

VAN CORLAER ELEMENTARY SCHOOL 2.5.14

Van Corlaer PreK – 5 Elementary School

First Floor



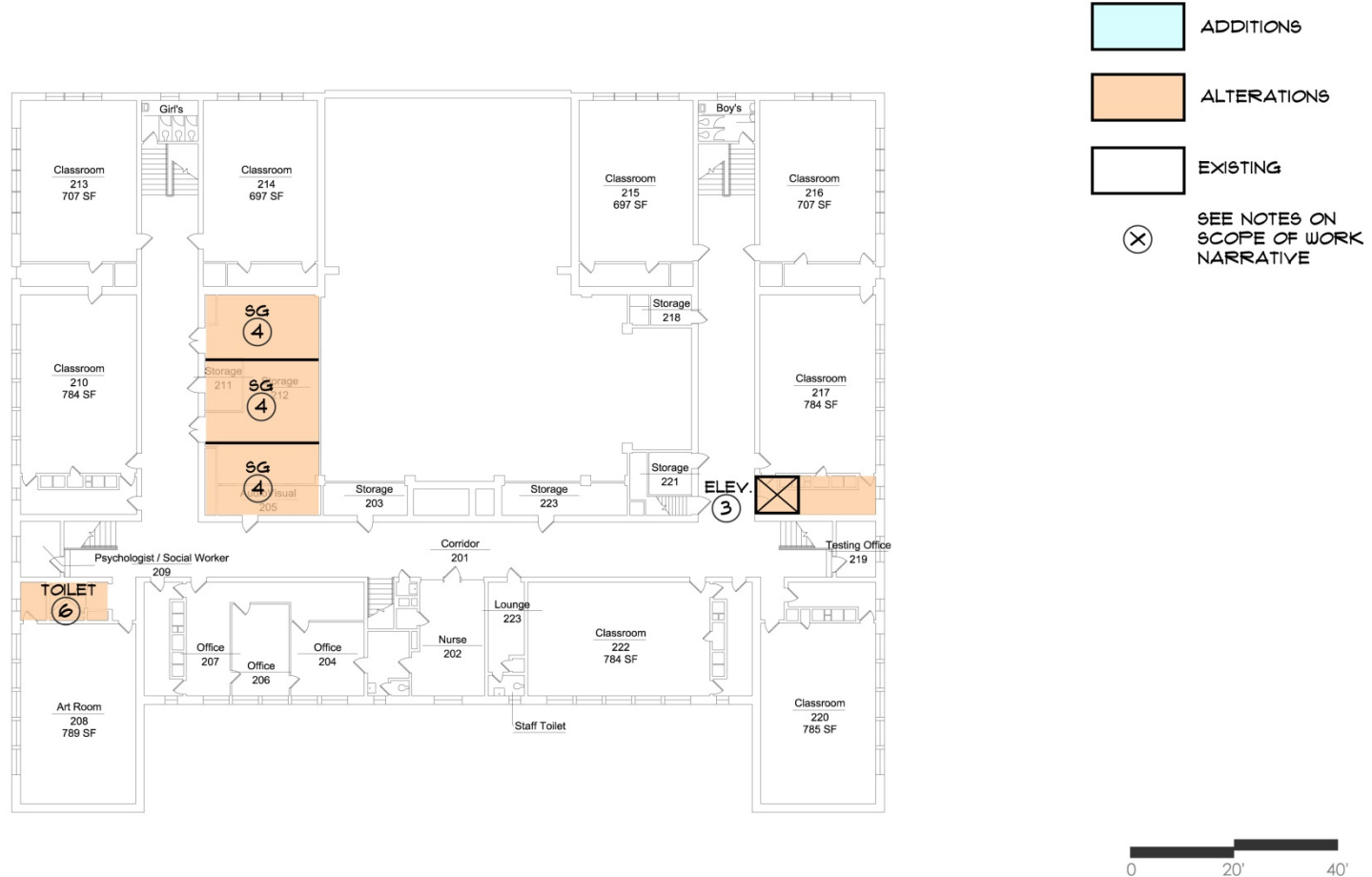
PROPOSED ALTERATIONS - FIRST FLOOR
VAN CORLAER ELEMENTARY SCHOOL 2.5.14

HAMLIN
DESIGN GROUP

MOSAIC
ASSOCIATES

Van Corlaer PreK – 5 Elementary School

Second Floor



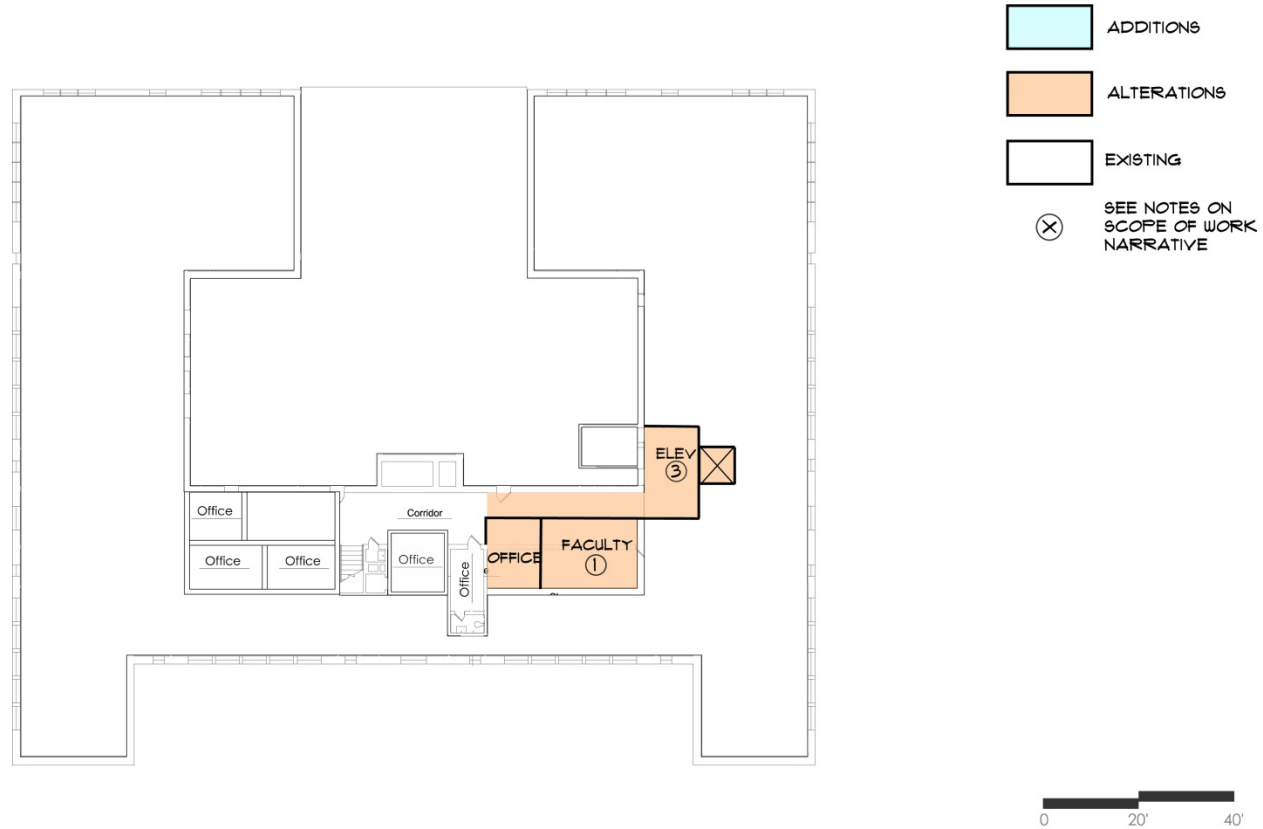
PROPOSED ALTERATIONS - SECOND FLOOR
VAN CORLAER ELEMENTARY SCHOOL 2.5.14

HAMLIN
DESIGN GROUP

MOSAIC
ASSOCIATES

Van Corlaer PreK – 5 Elementary School

Second Floor



PROPOSED ALTERATIONS - THIRD FLOOR
VAN CORLAER ELEMENTARY SCHOOL 2. 5. 14

HAMLIN
DESIGN GROUP

MOSAIC
ASSOCIATES

Central Park Middle School

\$3.6 Million

- Create small learning communities
- Install additional lockers
- Install science lab tables, counters, sinks, enhanced electrical and IT, HVAC and lighting
- Repurpose existing science labs to art and technology classrooms
- Reconfigure current bathrooms and provide ADA access
- Install light fixtures in classrooms
- Infrastructure improvement as per BCS

Central Park Middle School

Basement



ADDITIONS



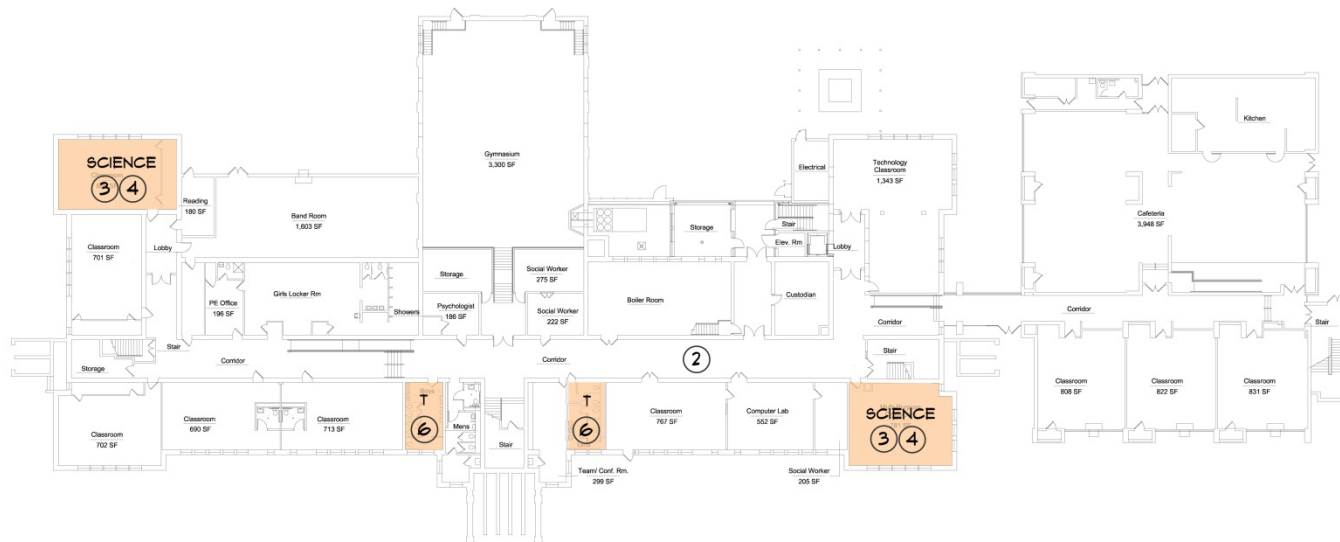
ALTERATIONS



EXISTING



SEE NOTES ON
SCOPE OF WORK
NARRATIVE



PROPOSED ALTERATIONS - BASEMENT
CENTRAL PARK MIDDLE SCHOOL 2. 5. 14

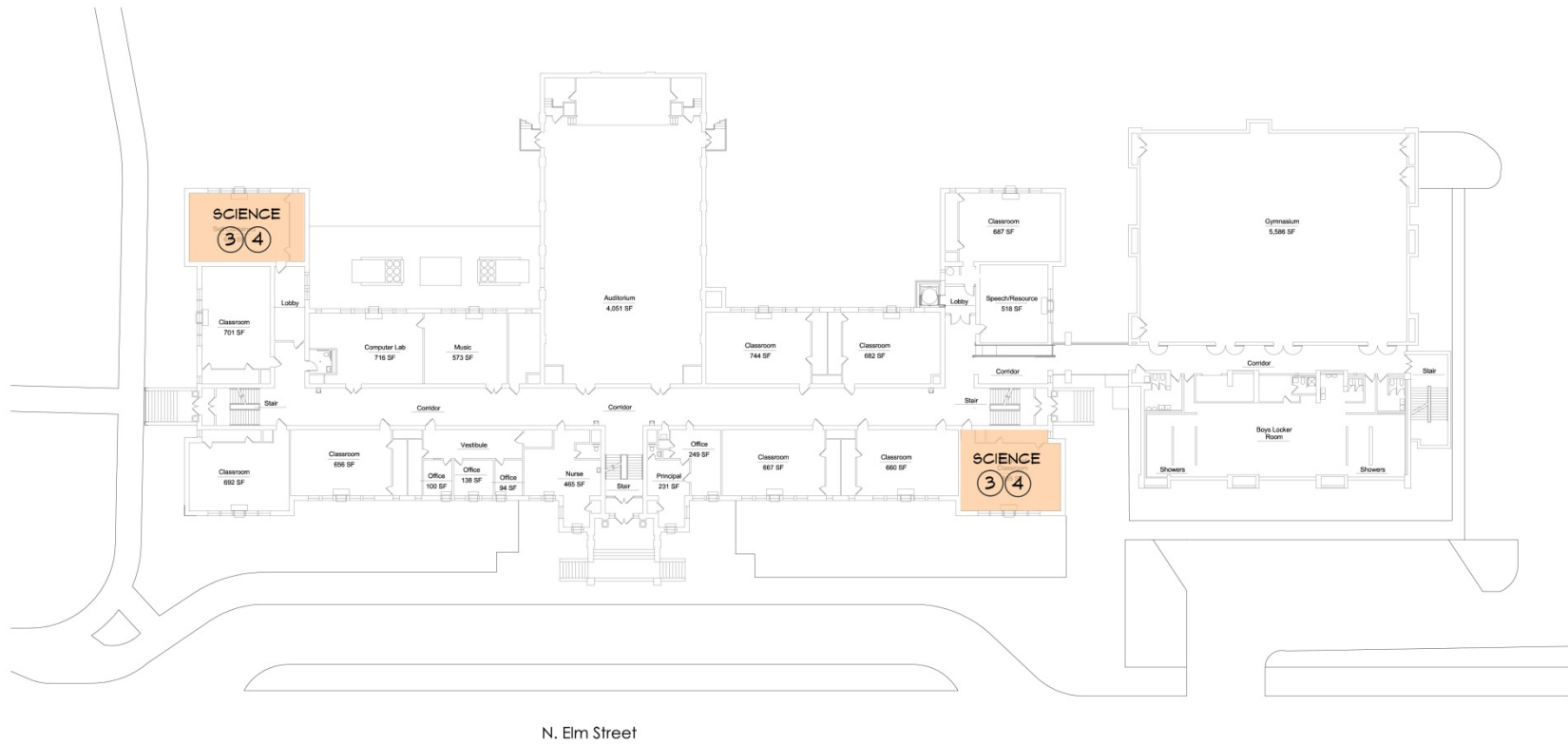
HAMLIN
DESIGN GROUP

MOSAIC
ASSOCIATES

Central Park Middle School

First Floor

ADDITIONS
 ALTERATIONS
 EXISTING
 X SEE NOTES ON SCOPE OF WORK NARRATIVE



PROPOSED ALTERATIONS - FIRST FLOOR
 CENTRAL PARK MIDDLE SCHOOL 2. 5. 14

HAMLIN
 DESIGN GROUP

0 30' 60'

MOSAIC
 ASSOCIATES

Central Park Middle School

Second Floor



ADDITIONS



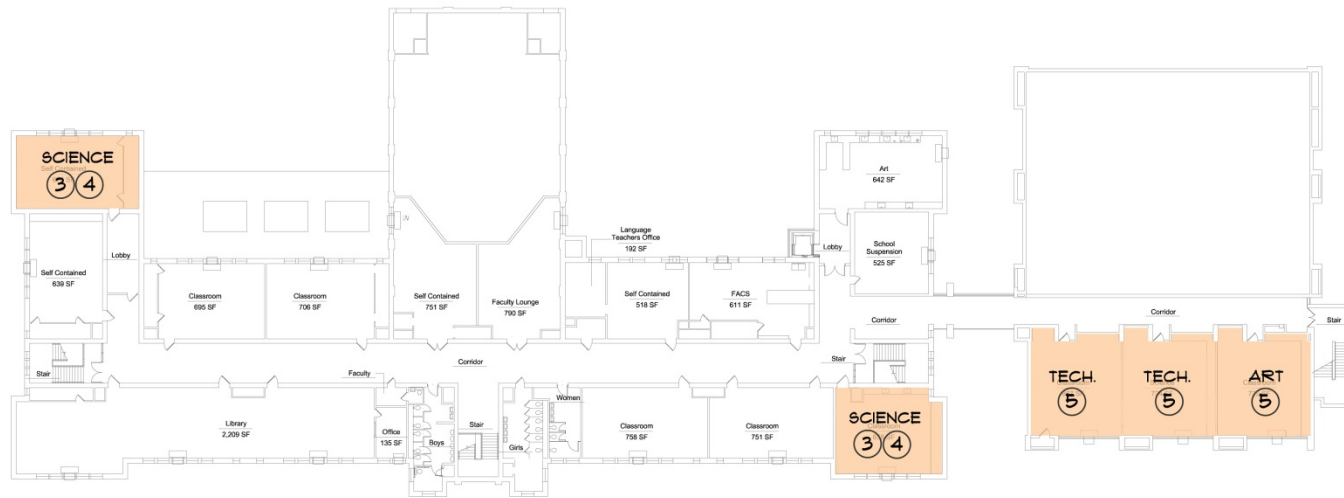
ALTERATIONS



EXISTING



SEE NOTES ON
SCOPE OF WORK
NARRATIVE



PROPOSED ALTERATIONS - SECOND FLOOR
CENTRAL PARK MIDDLE SCHOOL 2. 5. 14

HAMLIN
DESIGN GROUP

MOSAIC
ASSOCIATES

Mont Pleasant Middle School

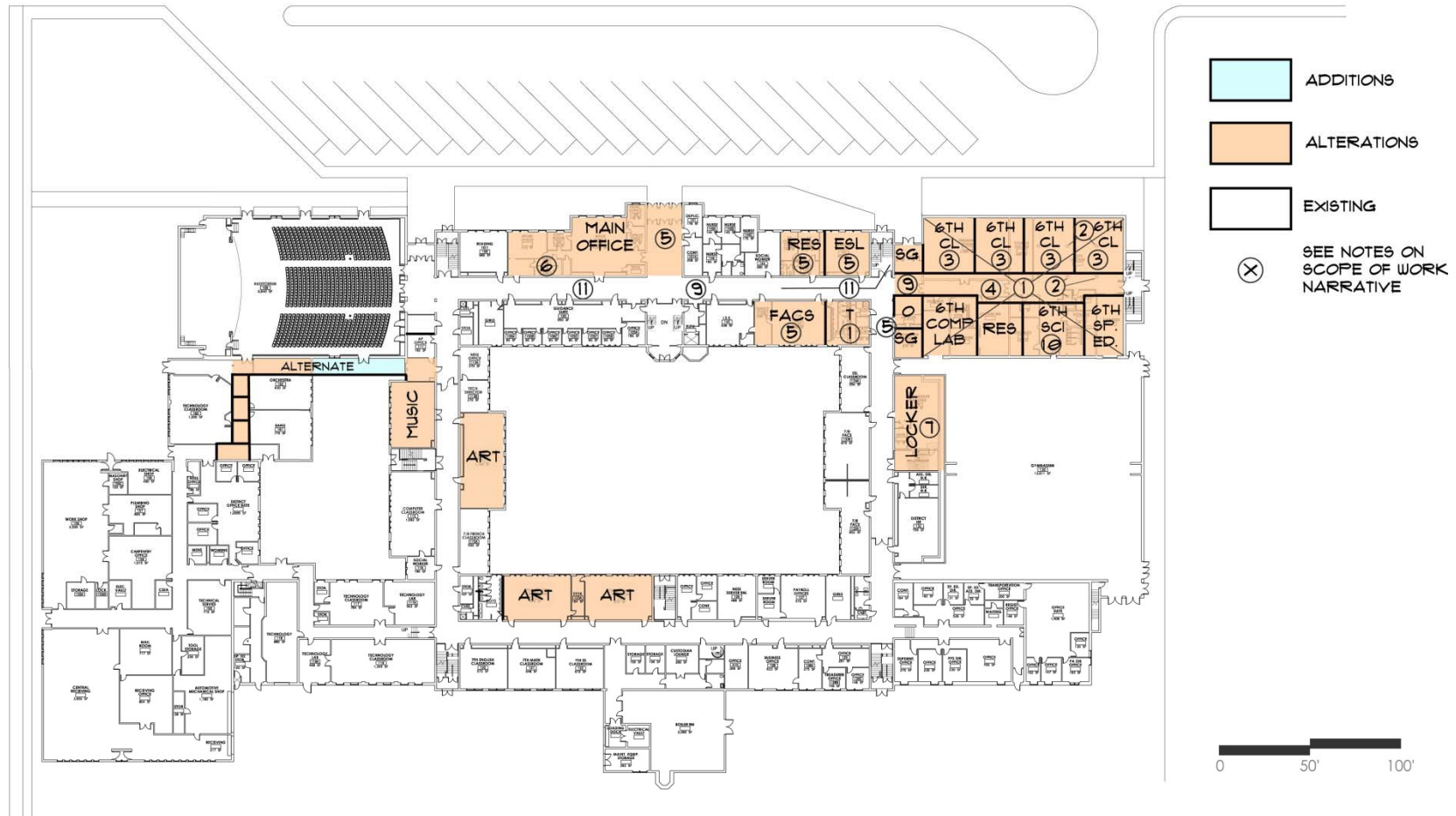
\$25 Million

- Create small learning communities
- Provide new partitions
- Install new window and door assemblies
- Relocate columns
- Install lockers
- Provide HVAC, lighting and IT technology
- Reconstruct new bathrooms, fixtures, lighting, HVAC and infrastructure
- Remove existing classroom infrastructure.
- Provide new office and locker room
- Install new stairs, ramps and handrails
- Install new partition and door assembly
- Install science lab tables, counters, sinks, enhanced electrical & IT
- Patch and paint walls
- Install light fixtures in classrooms and corridors
- Provide improvements as outlined in Building Condition Survey

Mont Pleasant Middle School

First Floor

FOREST ROAD



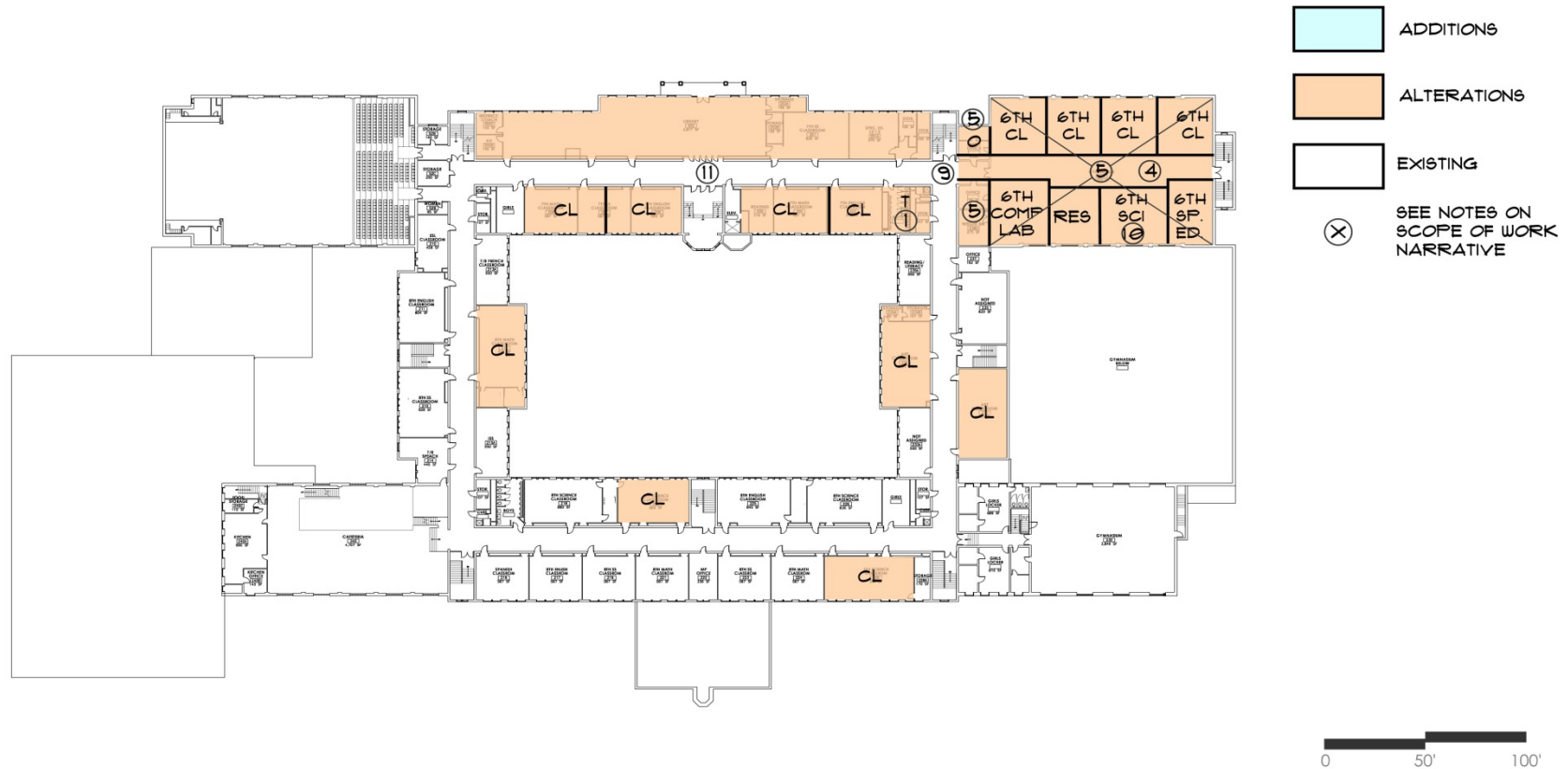
PROPOSED ALTERATIONS - FIRST FLOOR
MONT PLEASANT MIDDLE SCHOOL 2.14.14

HAMLIN
DESIGN GROUP

MOSAIC
ASSOCIATES

Mont Pleasant Middle School

Second Floor



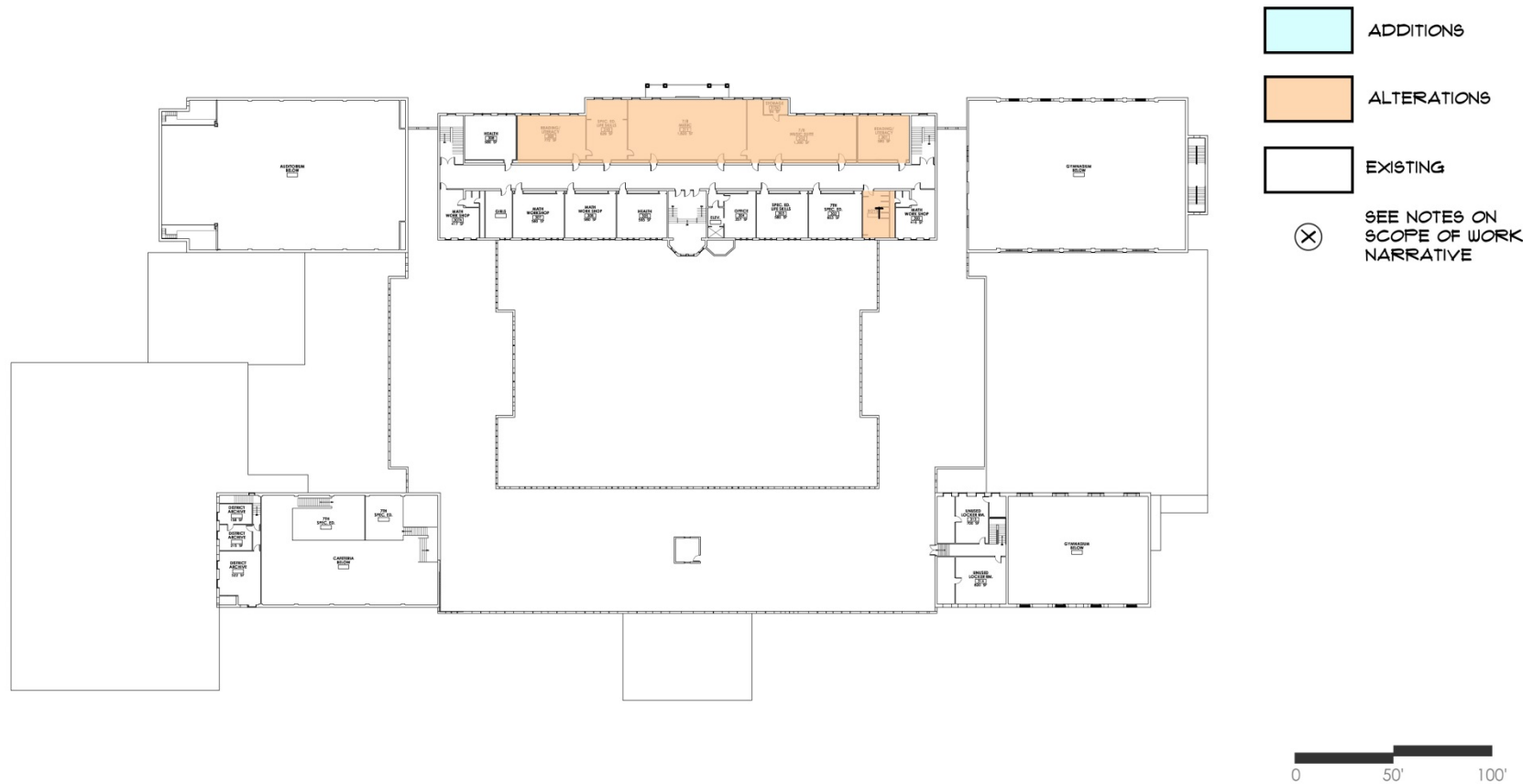
PROPOSED ALTERATIONS - SECOND FLOOR
MONT PLEASANT MIDDLE SCHOOL 2. 14. 14

HAMLIN
DESIGN GROUP

MOSAIC
ASSOCIATES

Mont Pleasant Middle School

Third Floor



PROPOSED ALTERATIONS - THIRD FLOOR
MONT PLEASANT MIDDLE SCHOOL 2.14.14

HAMLIN
DESIGN GROUP

MOSAIC
ASSOCIATES

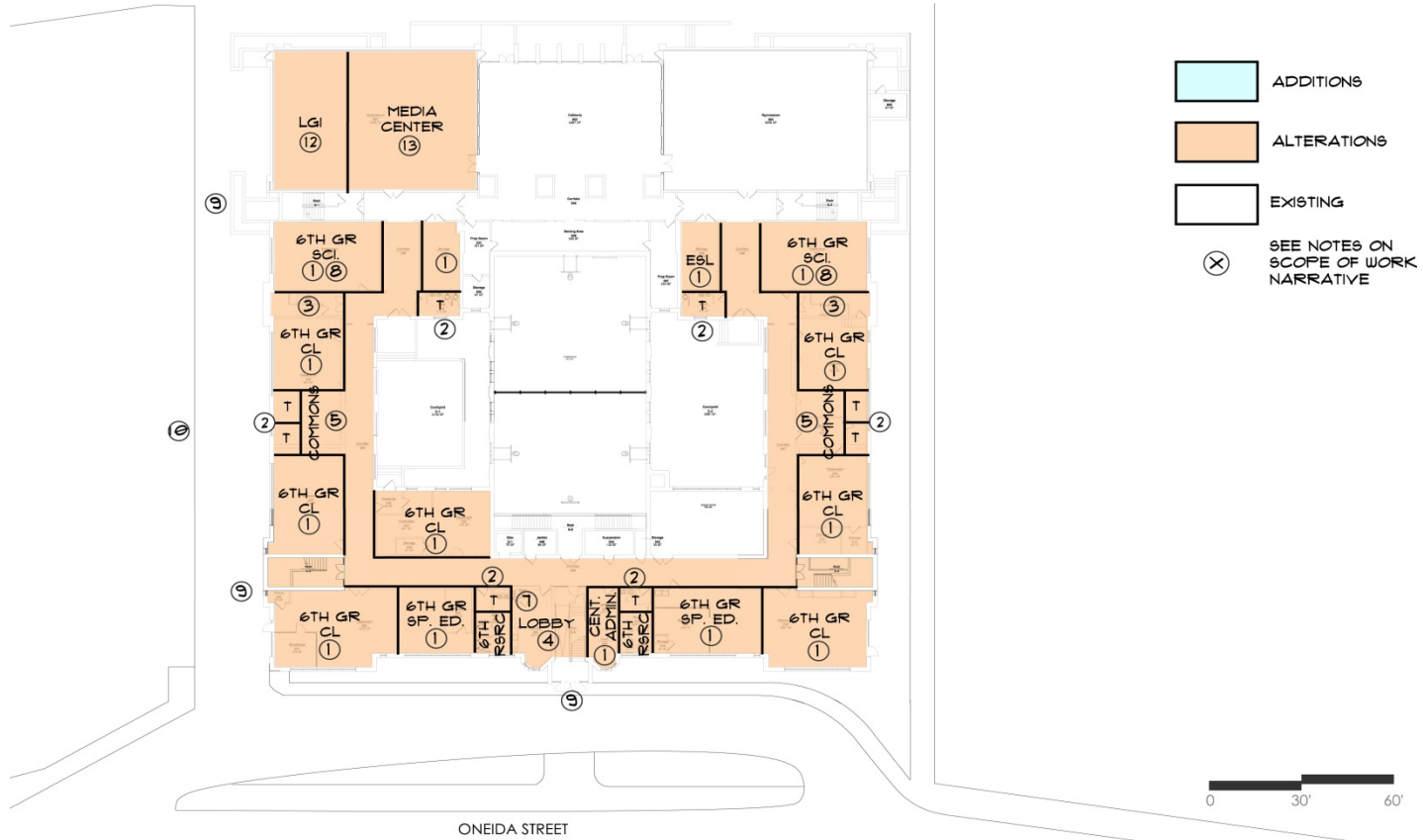
Oneida Middle School

\$22.4 Million

- Create small learning communities
- Install new partitions
- Install new door/window assemblies
- Install ceilings
- Provide new bathrooms,, HVAC, lighting and plumbing
- Install new stair assembly
- Install lockers in each small learning community
- Reconstruct existing bathrooms
- Install science lab tables, counters, sinks, enhanced electrical and IT
- Provide new entry canopy structure
- Provide new driveway
- Provide new bus parking
- Provide new sidewalk
- Provide finishes, ceiling lighting and HVAC distribution
- Remove existing gym equipment. Install new partitions, library casework, floor, wall, ceiling finishes, HVAC, electrical and IT infrastructure
- Install light fixtures in classrooms and corridors
- Replace exterior windows and doors

Oneida Middle School

Ground Floor



PROPOSED ALTERATIONS - GROUND FLOOR
NEIDA MIDDLE SCHOOL 2. 5. 14

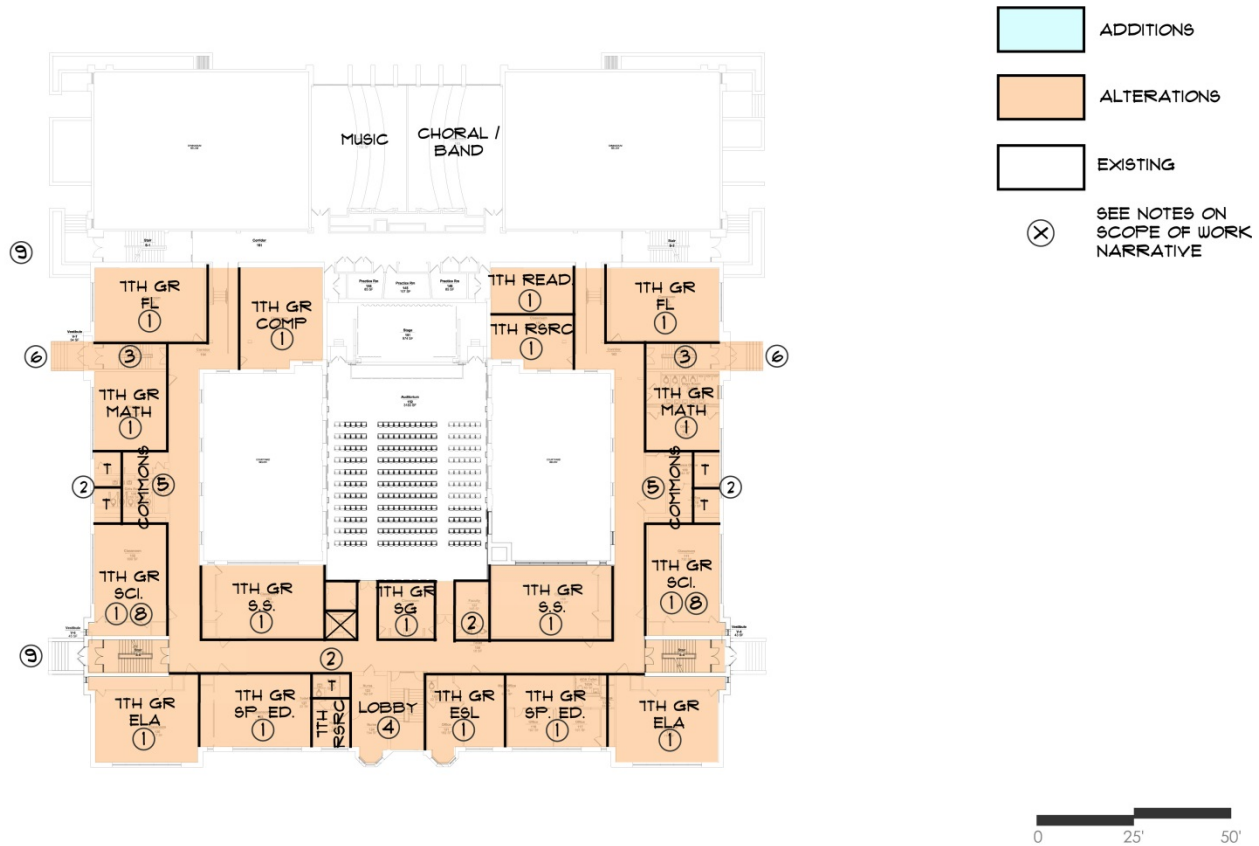
HAMLIN
DESIGNGROUP



MOSAIC
ASSOCIATES

Oneida Middle School

First Floor



PROPOSED ALTERATIONS - FIRST FLOOR
ONEIDA MIDDLE SCHOOL 2.5.14

HAMLIN
DESIGNGROUP



MOSAIC
ASSOCIATES

Oneida Middle School

Second Floor



PROPOSED ALTERATIONS - SECOND FLOOR
ONEIDA MIDDLE SCHOOL 2.5.14

HAMLIN
DESIGNGROUP



Oneida Middle School Basement



- ADDITIONS
- ALTERATIONS
- EXISTING
- X SEE NOTES ON
SCOPE OF WORK
NARRATIVE



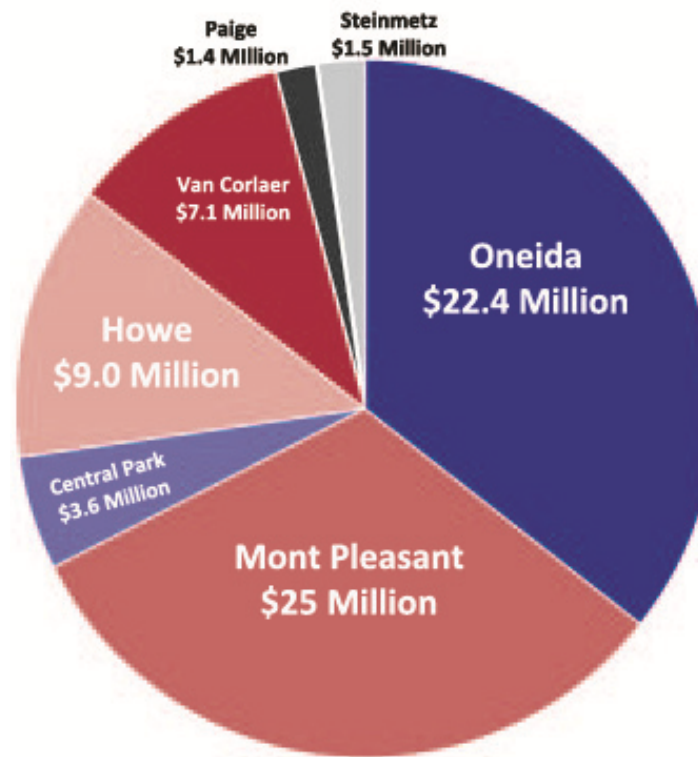
PROPOSED ALTERATIONS - BASEMENT
ONEIDA MIDDLE SCHOOL

2. 5. 14

HAMLIN
DESIGN GROUP

MOSAIC
ASSOCIATES

The distribution of funds



INVESTING IN EQUITY

Fiscal Impact

The Cost of Phase I work is \$70 Million.

It will have minimal, if any, impact on the tax rate.

Schenectady receives at least 95% state building aid, which means SCSD will receive \$66.5 million toward this project.

The local share would be \$3.5 Million.

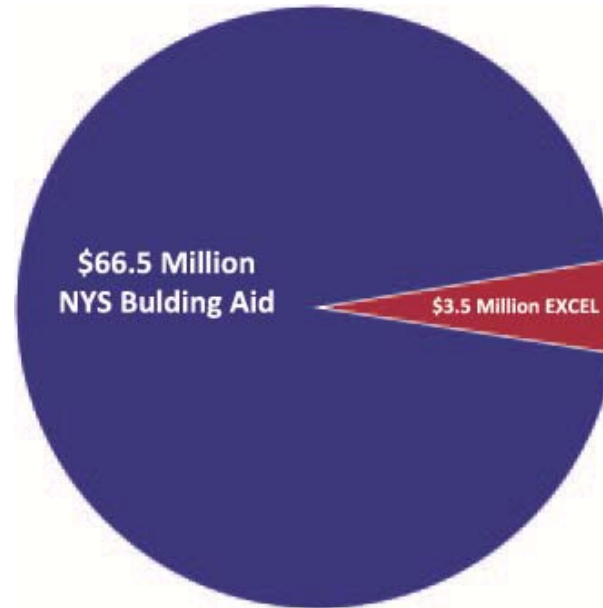
That cost is offset by \$3.5 Million in EXCEL funds.

Fiscal Impact

- \$70.0 Million Total Project Cost
- \$66.5 Million Building Aid (95%)
- \$ 3.5 Million Balance (Local Share)
- \$ 3.5 Million EXCEL Aid

\$ 0.0 Balance Local Share

The impact on the local tax rate of a home assessed at \$100,000 will be between \$0.00 and \$1.14 annually.



INVESTING IN EQUITY

Sound too good to be true?

- Money is already reserved in a state fund for schools to complete building projects.
- Districts are encouraged to take care of buildings and invest in infrastructure.
- Funds can only be used to improve, repair, renovate and construct educational spaces.
- This is an opportunity for us to get our fair share of building aid.

INVESTING IN EQUITY

Timeline

February 5, 2014: Board of Education Approves Resolution for \$70 Million Capital Project Referendum to take place on March 25, 2014.

March 25, 2014: Schenectady Residents Vote on Referendum.

March 25, 2015: Bid Period for Renovations at Mont Pleasant and Oneida.

April 2015: New Attendance Zones will be determined. *There will not be any changes to Attendance Zones prior to September 2016.*

June 2015: Project Work will begin on school buildings.

September 2016: New school grade configurations are in place.

Central Park, Mont Pleasant & Oneida open as Grade 6-8 Middle School.
Howe opens as PreK-5 elementary school.

INVESTING IN EQUITY

Grade Configurations

No changes to attendance zones or school grade configurations will take place prior to the fall of 2016.

- In the fall of 2016, Elmer Avenue and FDR will close.
- Howe will open as a PreK-5 elementary school.
- Central Park, Mont Pleasant and Oneida will open as 6-8 middle schools.
- All of our elementary schools will be reconfigured to PreK-5.

Attendance Zones

A team of stakeholders, demographers, experts and educators will be working on how the district attendance zones will be reshaped. The process of determining and re-drawing the zones is complex and will take more than a year to complete.

Join the Sub-Committee

If you are interested in joining the sub-committee that will be working on developing the district attendance zones, please contact Lori McKenna, director of planning and accountability at 881-3405 or by email mckennal@schenectady.k12.ny.us.

Grade Configurations

2013-2014		2014-2015		2015-2016		2016-2017	
School	Grades	School	Grades	Schools	Grades	Schools	Grades
Fulton	PreK-K	Fulton	PreK-K	Fulton	PreK-K	Fulton	TBD
Howe	PreK-K	Howe	PreK-K	Howe	PreK-K	Howe	PreK-5
Elmer	1-6	Elmer	1-6	Elmer	1-6	Elmer	Close
FDR	1-5	FDR	2-5	FDR	3-5	FDR	Close
Hamilton	K-6	Hamilton	K-6	Hamilton	K-6	Hamilton	PreK-5
Keane	K-6	Keane	K-6	Keane	K-6	Keane	PreK-5
King	K-8	King	K-8	King	K-8	King	PreK-5
Lincoln	PreK-6	Lincoln	Prek-6	Lincoln	Prek-6	Lincoln	PreK-5
Paige	K-8	Paige	K-8	Paige	K-8	Paige	PreK-5
Pleasant Vly	K-6	Pleasant Vly	K-6	Pleasant Vly	K-6	Pleasant Vly	PreK-5
Van Corlaer	K-6	Van Corlaer	K-6	Van Corlaer	K-6	Van Corlaer	PreK-5
Woodlawn	K-6	Woodlawn	K-6	Woodlawn	K-6	Woodlawn	PreK-5
Yates	K-6	Yates	K-6	Yates	K-6	Yates	PreK-5
Zoller	1-8	Zoller	1-8	Zoller	1-8	Zoller	PreK-5
Central Park	K-8	Central Park	K-8	Central Park	K-8	Central Park	6-8
Mont Pleasant	7-8	Mont Pleasant	7-8	Mont Pleasant	7-8	Mont Pleasant	6-8
Oneida	Close	Oneida	Close	Oneida	Close	Oneida	6-8
Schenectady HS	9-12	Schenectady HS	9-12	Schenectady HS	9-12	Schenectady HS	9-12
SCLA	9-12	SCLA	9-12	SCLA	9-12	SCLA	9-12

More Information

Public Informational Meetings

February 25: 7 p.m., Ellis Hospital (McClellan Street Campus)
Auditorium

March 6: 6:30 p.m. Van Corlaer Elementary School, 2300
Guilderland Ave.

March 10: 6:30 p.m. Yates School, 725 Salina St.

March 13: 7 p.m. Faith Deliverance Tabernacle Church, 1028
Ostrander Pl.

March 18 6 p.m., Central Park School, 421 Elm Street

INVESTING IN EQUITY

School Tours

Guided Tours and Walk-throughs with an explanation of Capital Project work will be provided as follows:

March 15

Van Corlaer Elementary School

Tour Times 9:15 – 10 a.m. & 10 – 10:45 a.m.

Mont Pleasant Middle School

Tour Times 11:30 a.m. – 12:15 p.m. & 12:15 – 1 p.m.

March 22

Howe School

Tour Times 9:30 – 10:15 a.m. & 10:15 – 11 a.m.

Central Park

Tour Times 11:30 a.m. – 12:15 p.m. & 12:15 – 1 p.m.

Oneida Middle School

Tour Times 1:30-2:15 p.m. & 2:15 – 3 p.m.

Please RSVP by calling 370-8100 X40137 or by email coronak@schenectady.k12.ny.us

INVESTING IN EQUITY

Referendum

Referendum is March 25, 2014

Polls are open Noon – 9 p.m.

Voting Locations

District 1: Yates Elementary School

District 2: Schenectady High School

District 3: Elmer Avenue Elementary

District 4: Paige School

District 5: Woodlawn School

District 6: Mont Pleasant Middle School

District 7: Fulton Early Childhood Education Center

Polls are Open Noon – 9 p.m.

Voter Eligibility

Citizen of U.S.

At least 18 years of age

District resident at least 30 days prior to vote

Registered voter in the Schenectady City School District

You can download an absentee ballot

http://www.schenectady.k12.ny.us/Long_Range_Planning/AbsenteeBallott.pdf

INVESTING IN EQUITY