



Schenectady City School District

Mosaic Associates
Kersten Lorcher, AIA

Phase I – Capital Project Update

20th of April, 2016



CAPITAL PROJECT UPDATE | Outline

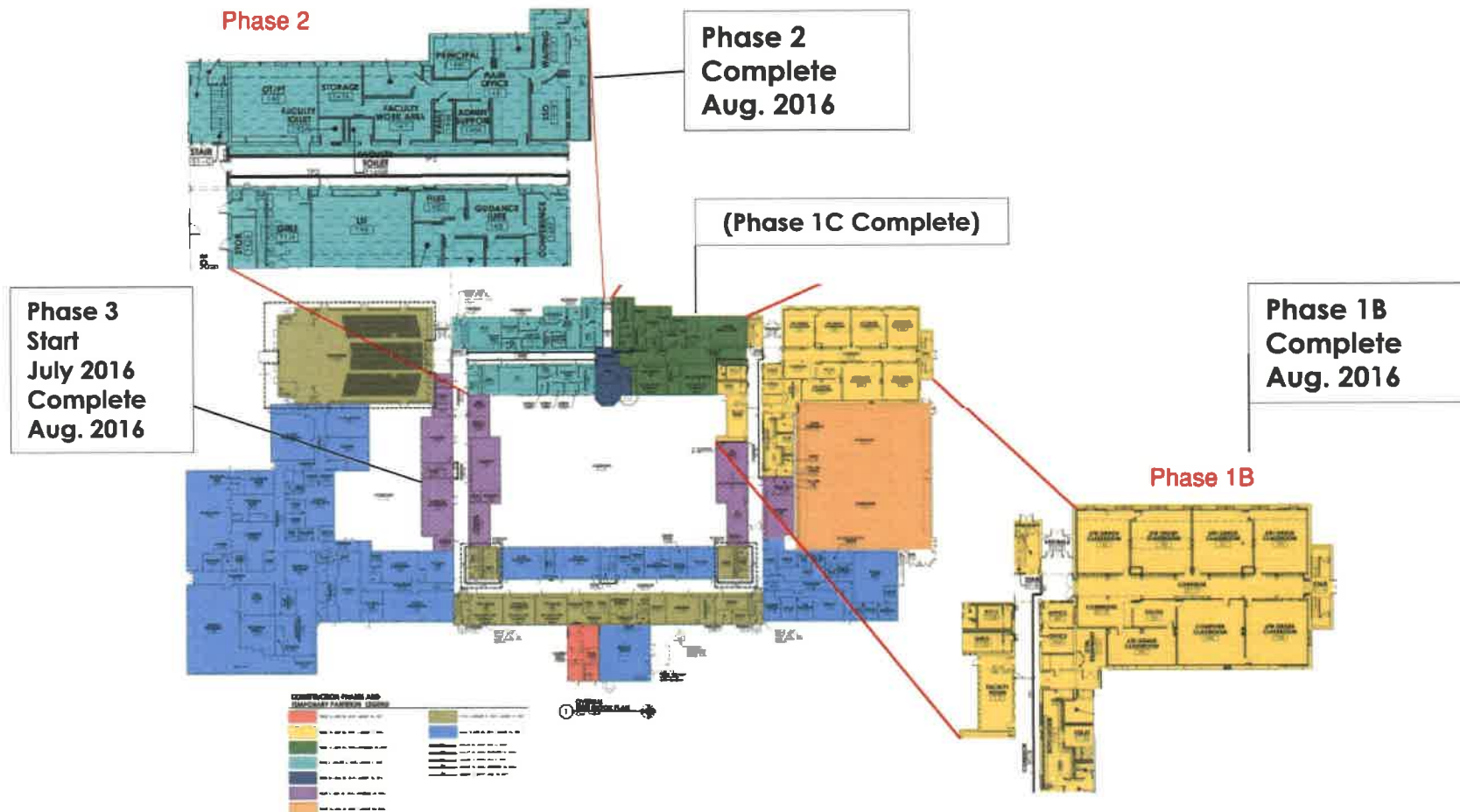
- Group B Projects Status Update:
Mont Pleasant Middle School
Oneida Middle School
- Group C Projects Status Update:
Central Park Middle School
Howe Elementary
Van Corlaer Elementary
- Group D Projects Status Update:
Hometown Health Center @ MPMS
Hometown Health Center @ SHS
*Ph 1B - CPMS – Exterior Masonry / Roof Repair Project
- Next Steps:
Critical & Milestone Dates





CAPITAL PROJECT | Group B

- MPMS – Phases 1B, 1C & 2





PROGRESS UPDATE | MPMS

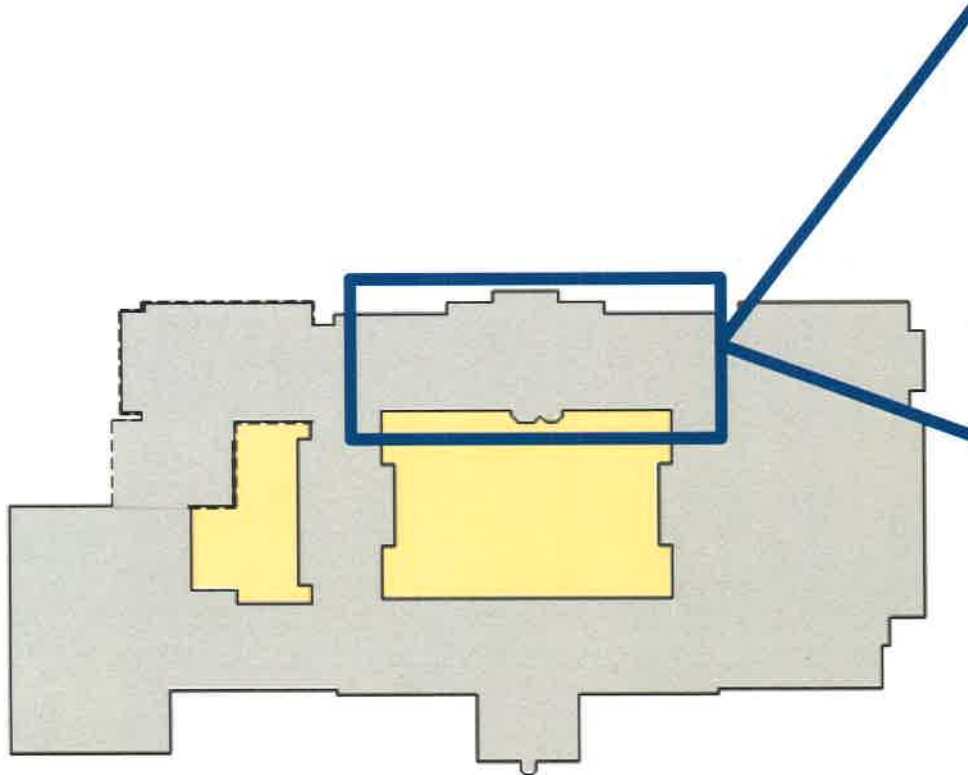
Media Center & Classroom
Reconstruction





PROGRESS UPDATE | MPMS

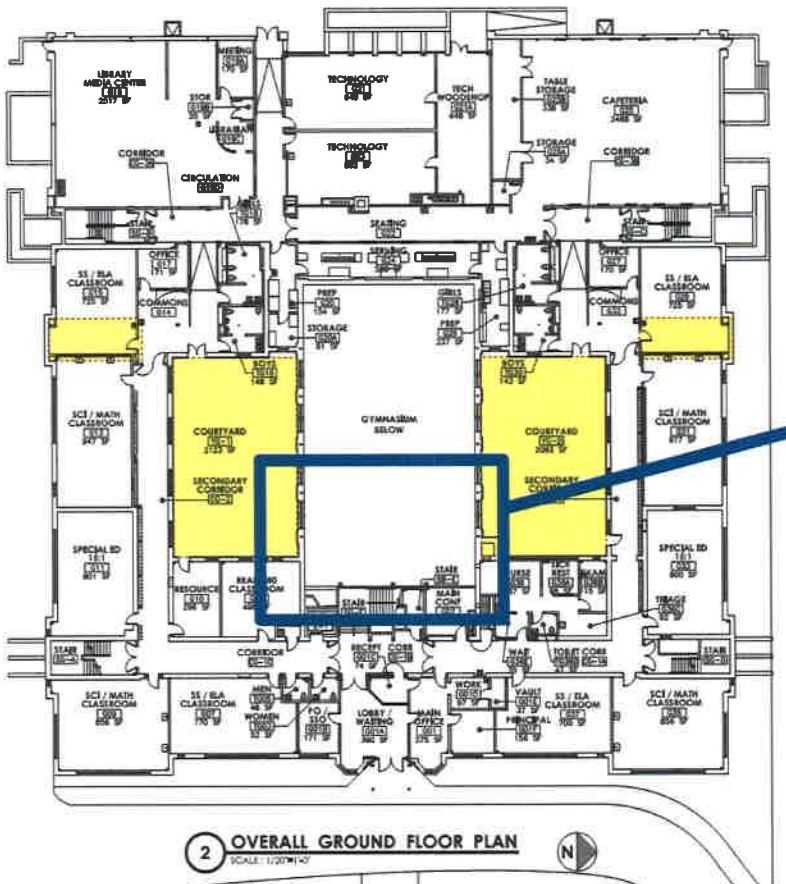
New HVAC Equipment
for Classrooms & Media Center





CAPITAL PROJECT | Group B

- OMS – Ground Floor Plan

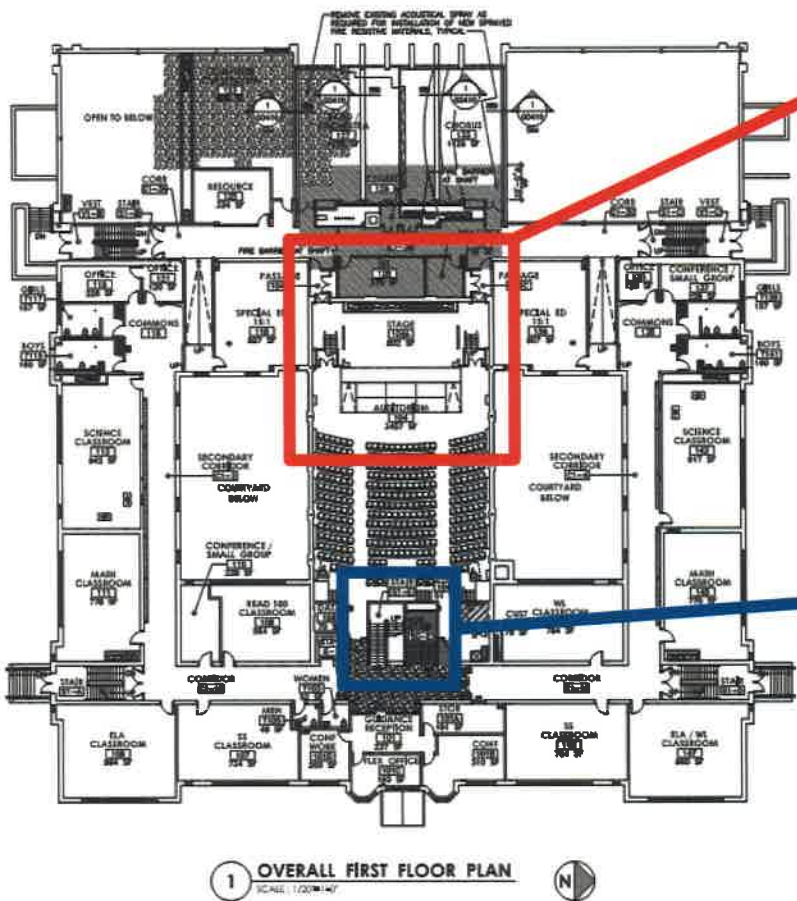


Sump Access Room Rough Ins & Fireproofing



CAPITAL PROJECT | Group B

OMS – First Floor Plan



Auditorium Flooring Underlayment



Framing & Decking For Main Stair



CAPITAL PROJECT | Group C

- CENTRAL PARK MIDDLE SCHOOL –
 - SED has reviewed and approved project.
 - SHPO has reviewed and approved project.
 - Bids received and recommendation for award has been made.





CAPITAL PROJECT | Group C

- Van Corlaer ES drawings & specifications at NYSED;
 - Responses have been made to architectural comments.
 - SHPO has reviewed and approved project.
 - Awaiting Engineering review (anticipate within 1 week).
- Howe ES drawings & specifications have been submitted to NYSED;
 - Responses have been made to architectural & engineering comments.
 - Anticipate NYSED approval in Late April.
 - Project is out to bid; anticipate bid opening 12 May





CAPITAL PROJECT | Group D

- Hometown Health Centers
 - MPMS & SHS:
 - Approved by SED.
 - Reviewing details of schedule and phasing with Contractors for final pricing.
 - Anticipate Summer 2016 construction





CAPITAL PROJECT | Group D

- Phase 1B - CPMS – Exterior Masonry / Roof Repairs
 - **Bond Referendum – 17 May 2016**





CAPITAL PROJECT UPDATE | Next Steps & Milestones

- Spring 2016 Anticipate SED approval for Howe and Van Corlaer Elementary Schools.
- May 2016 Anticipate bidding HOWE and VCES Projects.
Bond Referendum Vote for Phase 1B – CPMS Exterior Masonry / Roof
- July 2016 Anticipate commencing mobilization and construction at CPMS / HOWE / VCES
- August 2016 District move into OMS & MPMS
- September 2016 Reopen Oneida Middle School;
Open Mt Pleasant MS & Central Park MS with 6th, 7th & 8th Grades.
- Summer 2017 Construct New bus drop off loop at MPMS.



THANK YOU | Any Questions?

