



Schenectady City School District

Michael Fanning AIA Kersten Lorcher AIA

Mosaic Associates Architects

Bradley Clark

Turner Construction Company

Phases 1, 1B & 2 – Capital Project Update

8 May 2019



CAPITAL PROJECT UPDATE | Outline

- Overview of Capital Projects
 - Long Range Planning
 - PH IB – CPMS Exterior Masonry
 - PH II – Timeline & Status Update
- Next Steps:
 - Critical & Milestone Dates

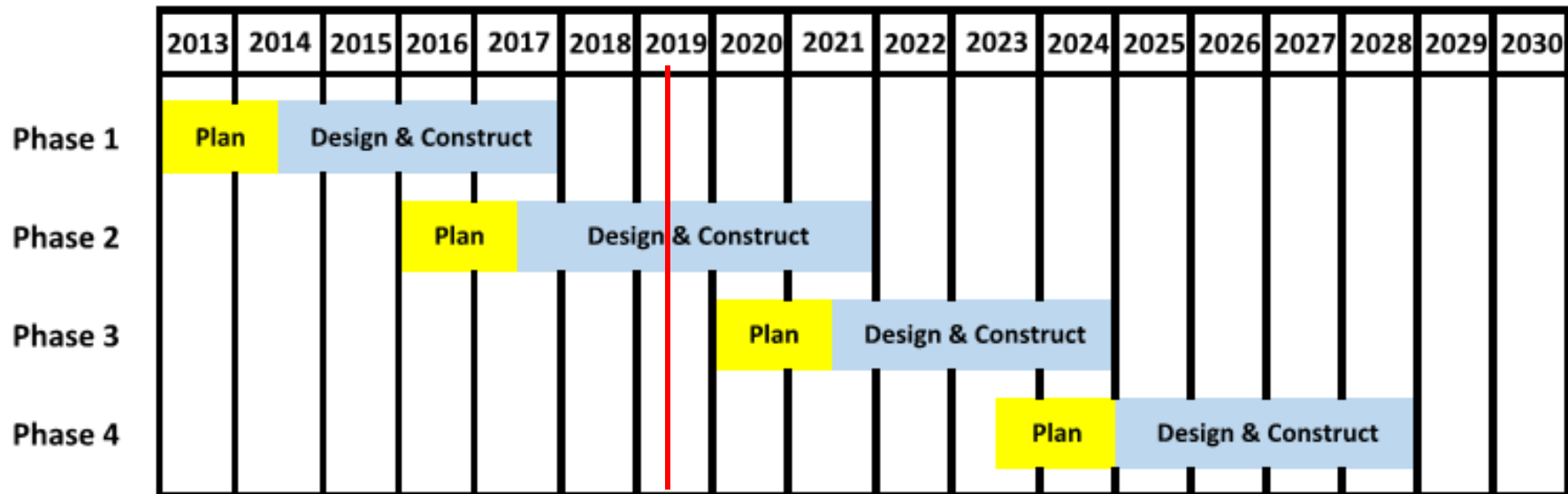


Schenectady High School Students, Teachers & Mentors at the first annual ACE Mentor Awards Banquet. Two SCSD seniors received scholarships.



CAPITAL PROJECT UPDATE | Long Range Planning

- Phase – 1 Timeline
- Phase - 2 Timeline
 - \$64.5M (Elementary School focus)
- Phase - 3 Timeline
- Phase - 4 Timeline





CAPITAL PROJECT | Phase IB

- CPMS – Exterior Masonry
 - Major construction complete
 - Contractor returning in Spring 2019 to complete landscaping and punchlist



South Elevation



North Elevation



CAPITAL PROJECT | Phase II

2017 Referendum – \$64.5 M

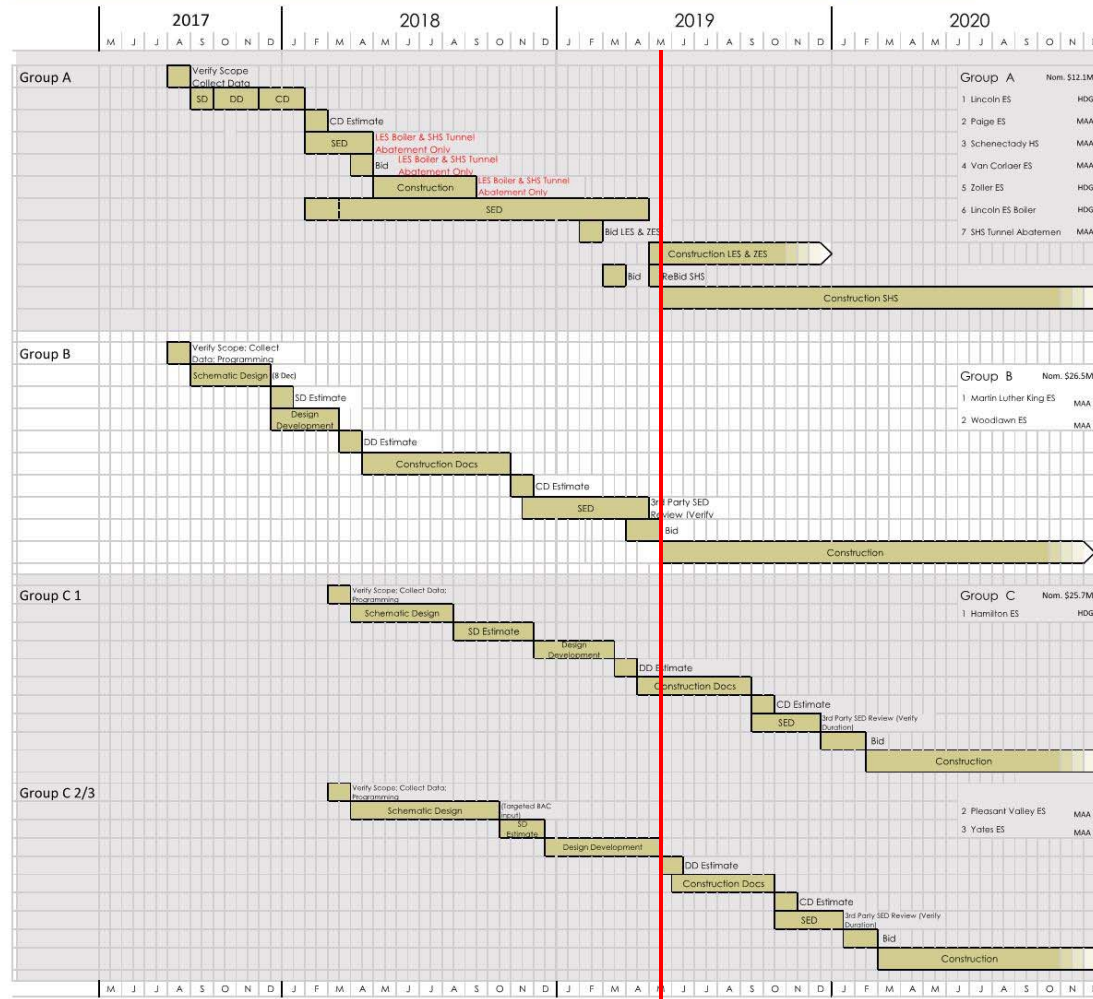
- Lincoln Elementary
- Paige Elementary
- Van Corlaer Elementary
- Zoller Elementary
- Schenectady High School
- Dr. Martin Luther King, Jr Elementary
- Woodlawn Elementary
- Hamilton Elementary
- Pleasant Valley Elementary
- Yates Elementary





CAPITAL PROJECT | Phase II Schedule

Timeline - Schenectady CSD 2017 Capital Project - 30 April, 2019





CAPITAL PROJECT

Phase II – Group A

- Lincoln Elementary School [Nom. \$ 0.5M]
- Paige Elementary School [Nom. \$ 2.8M]
- Van Corlaer Elementary School [Nom. \$ 1.1M]
- Zoller Elementary School [Nom. \$ 3.5M]
- Schenectady High School [Nom. \$ 4.1M]

SED Review and Approval complete!

Lincoln & Zoller bid and awarded.

SHS, Van Corlaer & Paige bid: Over budget.

SHS re-bid. Award to be recommended.



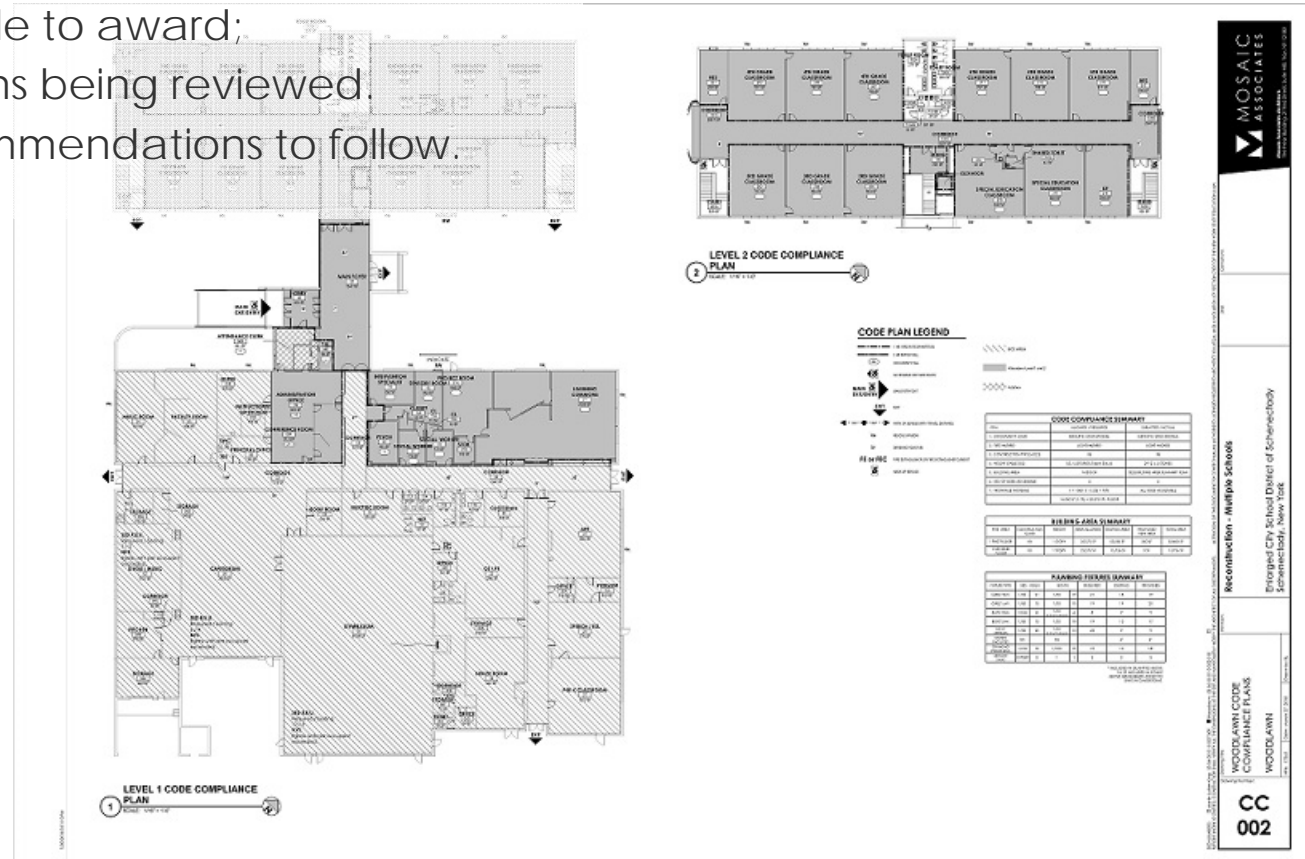


CAPITAL PROJECT | Phase II – Group B

Woodlawn Elementary School

[Nom. \$ 13.3M]

- SED Review and Approval complete!
- Bids received - over budget.
 - Un-able to award;
 - Options being reviewed.
 - Recommendations to follow.





CAPITAL PROJECT | Phase II – Group B

Dr. Martin Luther King Elementary School [Nom. \$ 13.1M]

- SED review: Architectural & MEP approval received.
 - Awaiting Project Manager approval
- Bids due tomorrow.





CAPITAL PROJECT | Phase II – Group C

Hamilton Elementary School

[Nom \$ 9.6M]

- Design Development Estimate In Progress
- Construction Documents In Progress

General Work Scope

- Main Entry / Main Office
- Social, Emotional, Community support / Nurse
- Learning Commons
- Limited Classroom modifications





CAPITAL PROJECT | Phase II – Group C

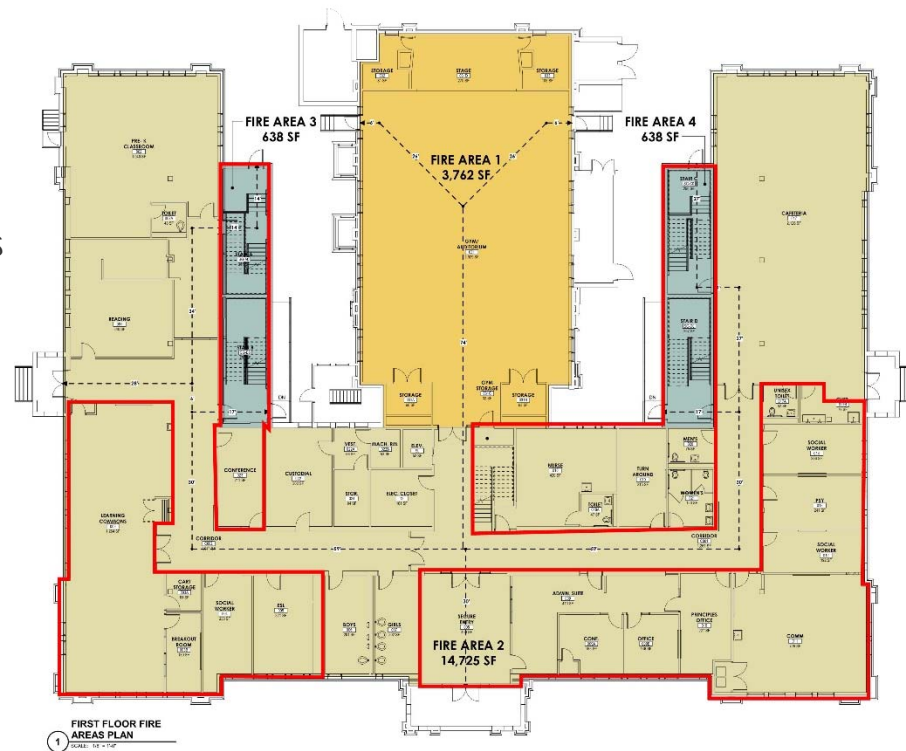
Pleasant Valley Elementary School

[Nom \$ 7.8M]

- Design Development next week
- Ongoing meetings with Building Advisory Committee (BAC) & District Admin.

General Work Scope

- Main Entry / Main Office
- Social, Emotional, Community support / Nurse
- Learning Commons
- Limited Classroom modifications





CAPITAL PROJECT | Phase II – Group C

Yates Elementary School

[Nom \$ 8.0M]

- Design Development next week
- Ongoing meetings with Building Advisory Committee (BAC) & District Admin.

General Work Scope

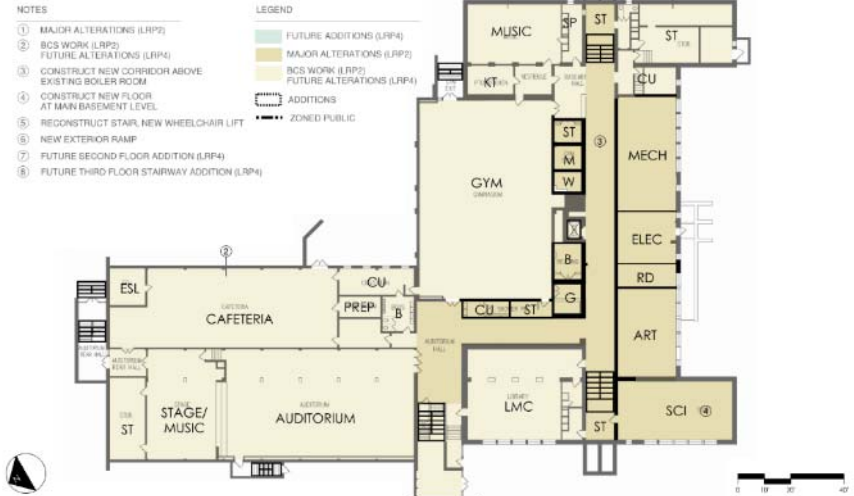
- Main Entry / Main Office
- Social, Emotional, Community support / Nurse
- Learning Commons
- Limited Classroom modifications



FIRST FLOOR PLAN - SCOPE OF WORK - THIS PHASE



BASEMENT FLOOR PLAN - SCOPE OF WORK - THIS PHASE





CAPITAL PROJECT UPDATE | Next Steps & Milestones

- May 2019
 - Start Construction A1 projects [Lincoln & Zoller ES's].
 - Recommendation for award A2 [SHS].
 - Receive bids for Group B projects.
 - Receive final SED approval for MLK.
 - Recommendation for award Group B projects.
- June 2019
 - Commence Construction of SHS & Group B projects.
(subject to acceptance of recommendations by BOE)



THANK YOU | Any Questions?

