



# Schenectady City School District

End of the Year Academic Progress Report  
2011-12



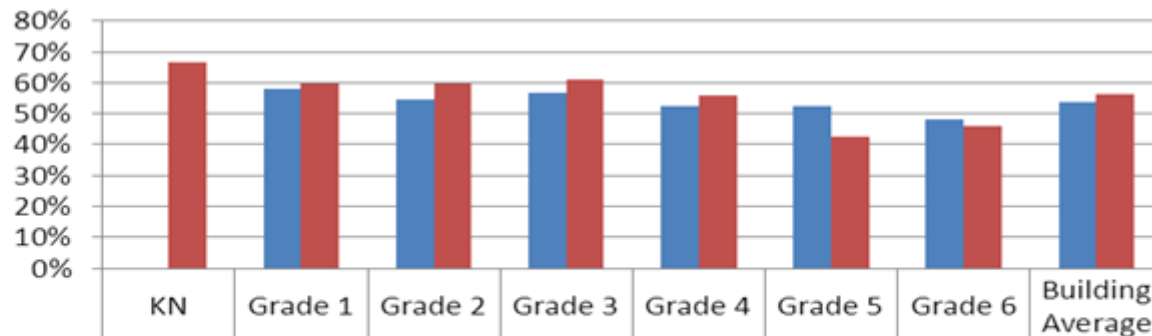
# Elementary End of the Year Academic Report

- ✓ Reading
- ✓ ELA
- ✓ Mathematics
- ✓ Social Studies
- ✓ Science
- ✓ Elementary Conclusions



# Elementary Fountas and Pinnell Percent Reading at or Above Grade Level September to June Comparison

**Schenectady City School District  
Fountas and Pinnell  
Grades K-6  
Percent of Students  
Reading at or Above Grade Level**



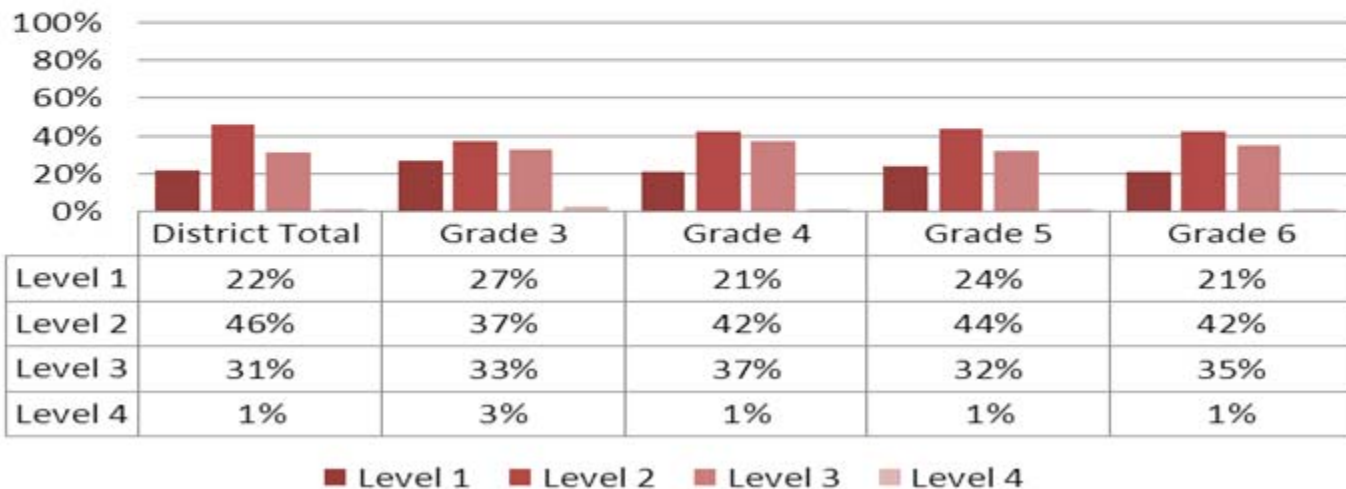
■ SCSD September	0%	58%	55%	57%	52%	52%	48%	54%
■ SCSD June	67%	60%	60%	61%	56%	43%	46%	56%



# Elementary: Grade 3-6

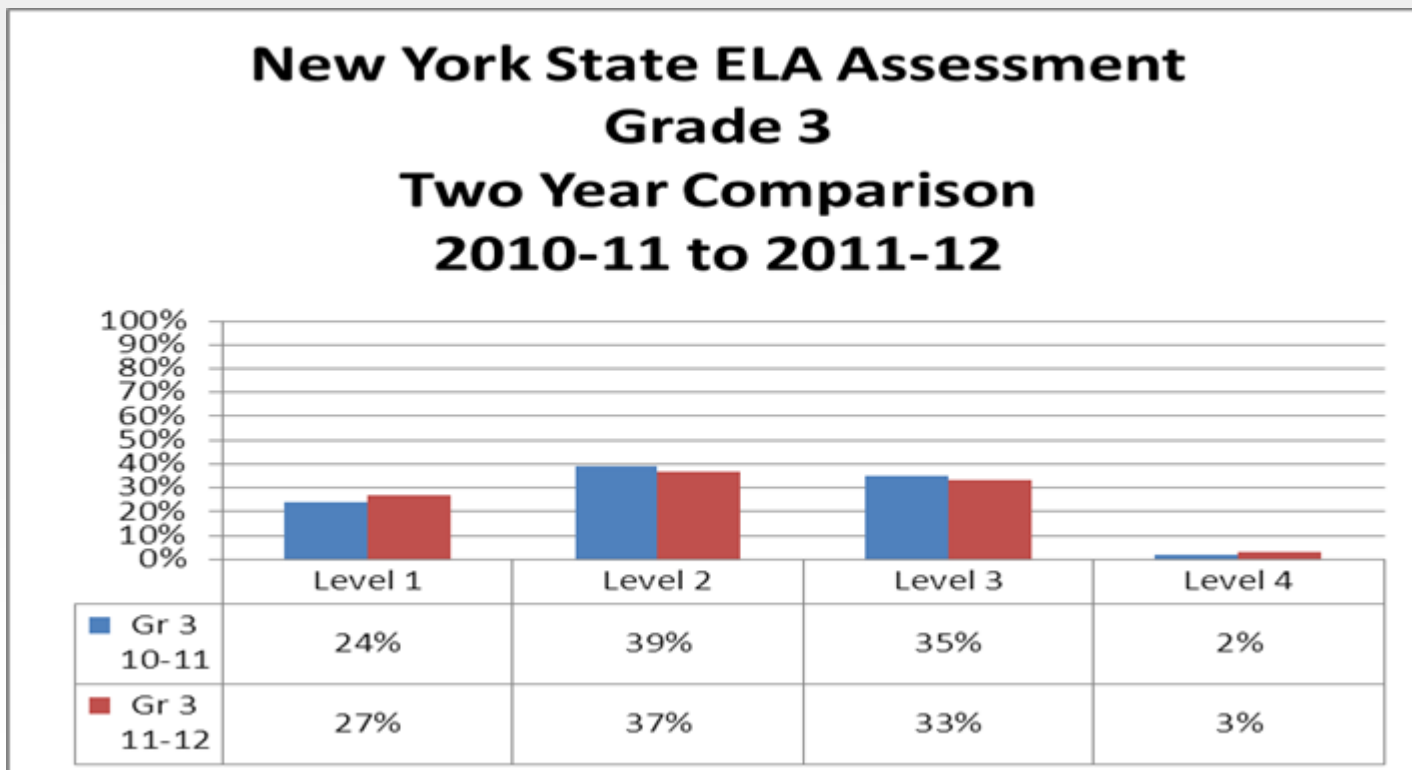
## New York State ELA Assessment

### New York State ELA Assessment Grades 3-6 2011-12



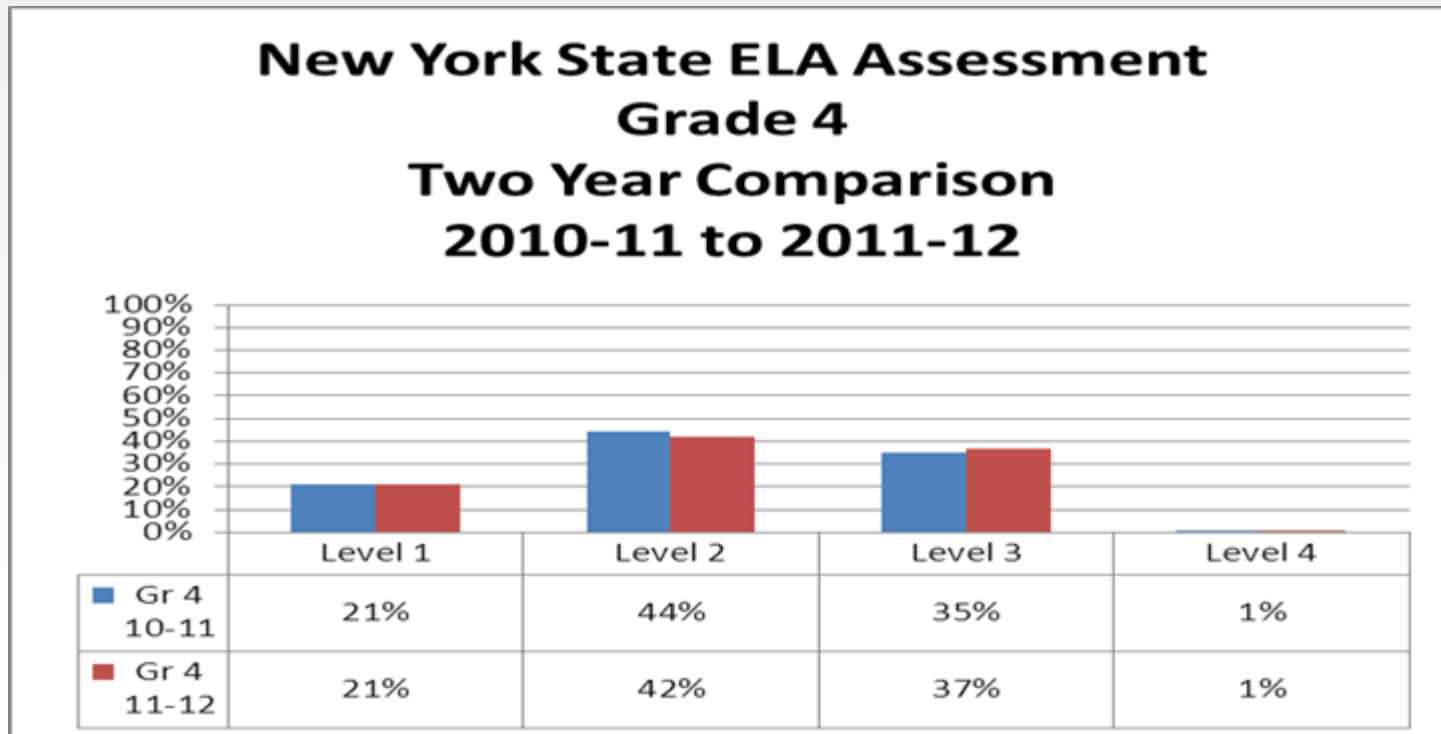


# New York State ELA Assessment-Grade 3 2 Year Comparison- 2010-11 to 2011-12





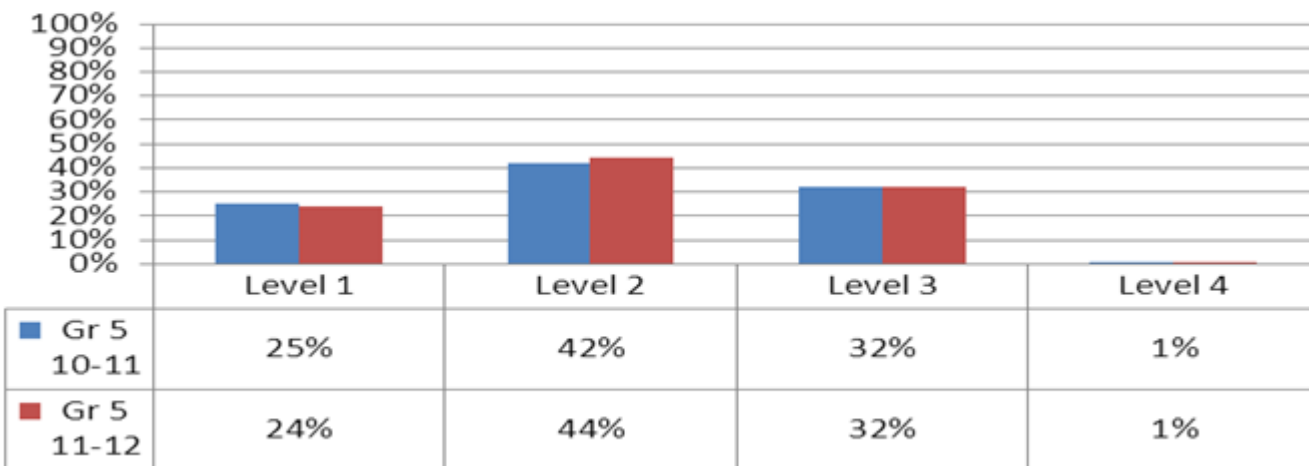
# New York State ELA Assessment-Grade 4 2 Year Comparison- 2010-11 to 2011-12





# New York State ELA Assessment-Grade 5 2 Year Comparison- 2010-11 to 2011-12

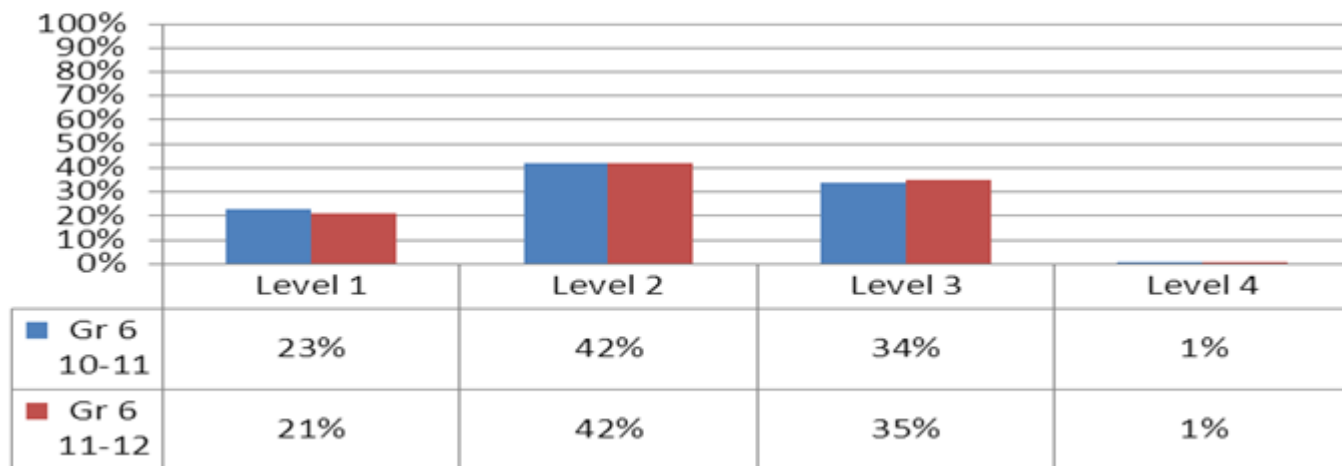
## New York State ELA Assessment Grade 5 Two Year Comparison 2010-11 to 2011-12





# New York State ELA Assessment-Grade 6 2 Year Comparison- 2010-11 to 2011-12

## New York State ELA Assessment Grade 6 Two Year Comparison 2010-11 to 2011-12

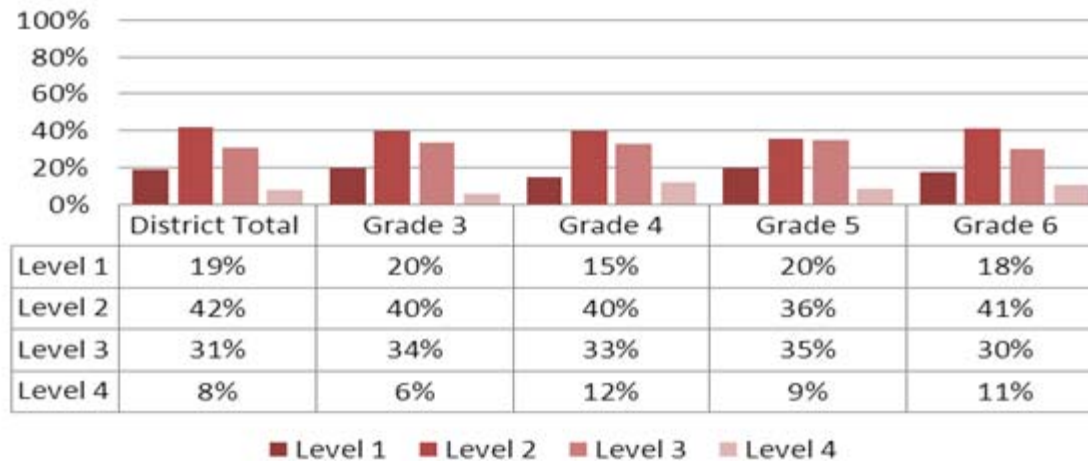






# Elementary New York State Math Grade 3-6

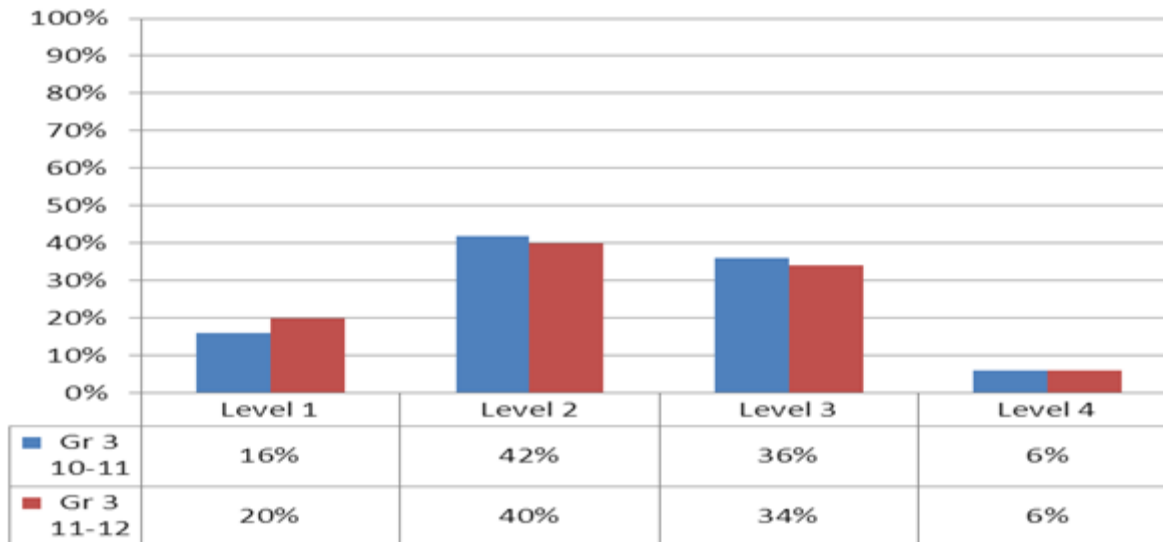
**New York State Math Assessment  
Grades 3-6  
2011-12**





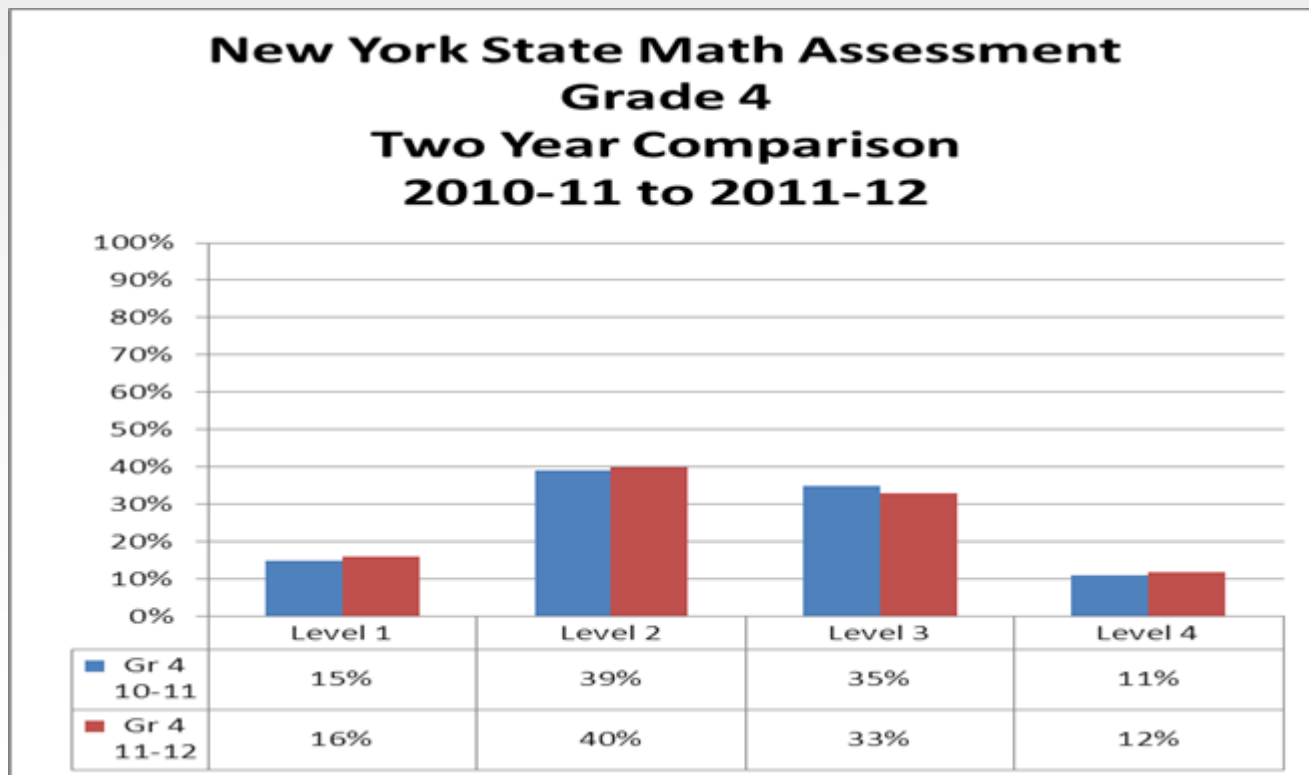
# New York State Math Assessment-Grade 3 2 Year Comparison- 2010-11 to 2011-12

**New York State Math Assessment  
Grade 3  
Two Year Comparison  
2010-11 to 2011-12**





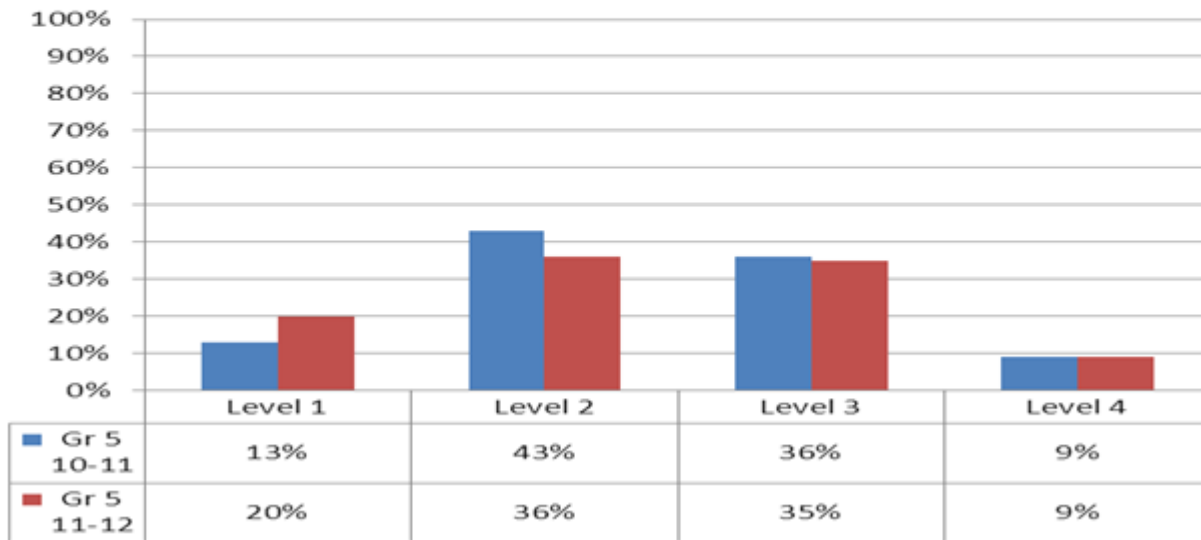
# New York State Math Assessment-Grade 4 2 Year Comparison- 2010-11 to 2011-12





# New York State Math Assessment-Grade 5 2 Year Comparison- 2010-11 to 2011-12

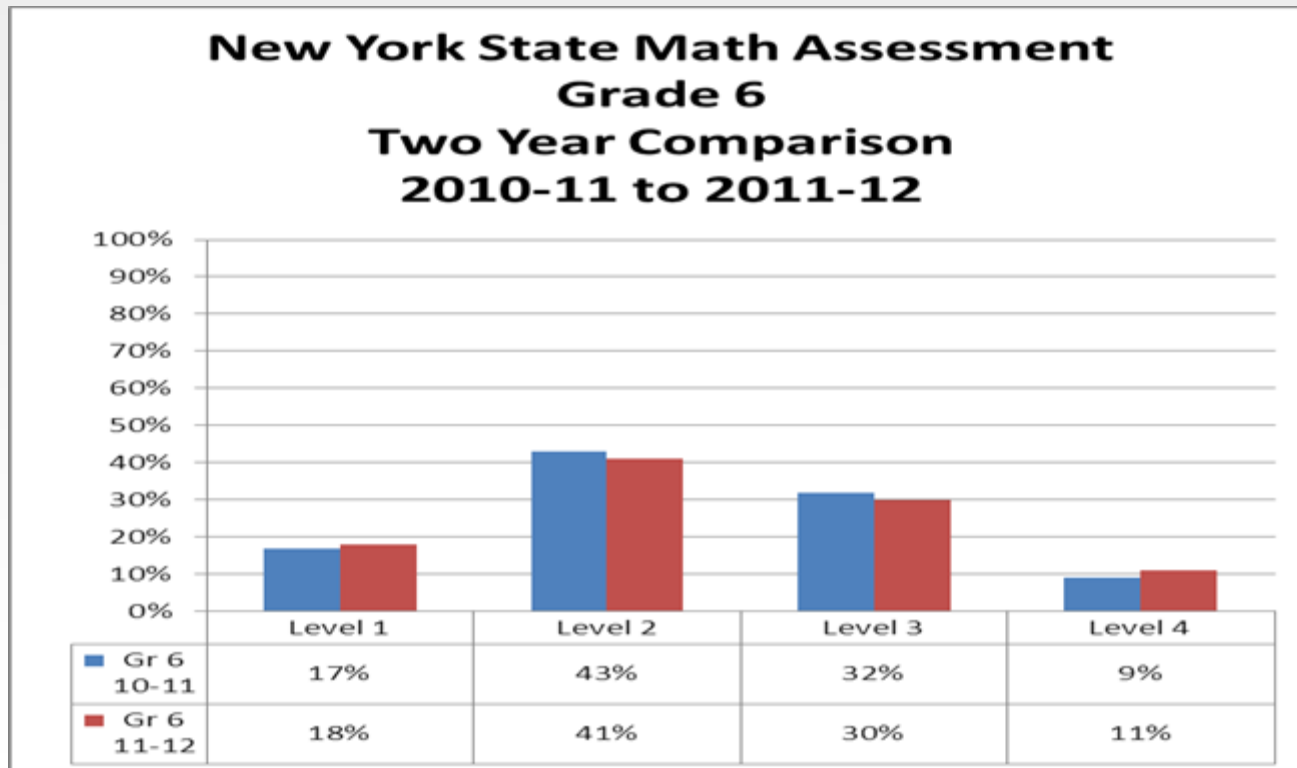
**New York State Math Assessment  
Grade 5  
Two Year Comparison  
2010-11 to 2011-12**





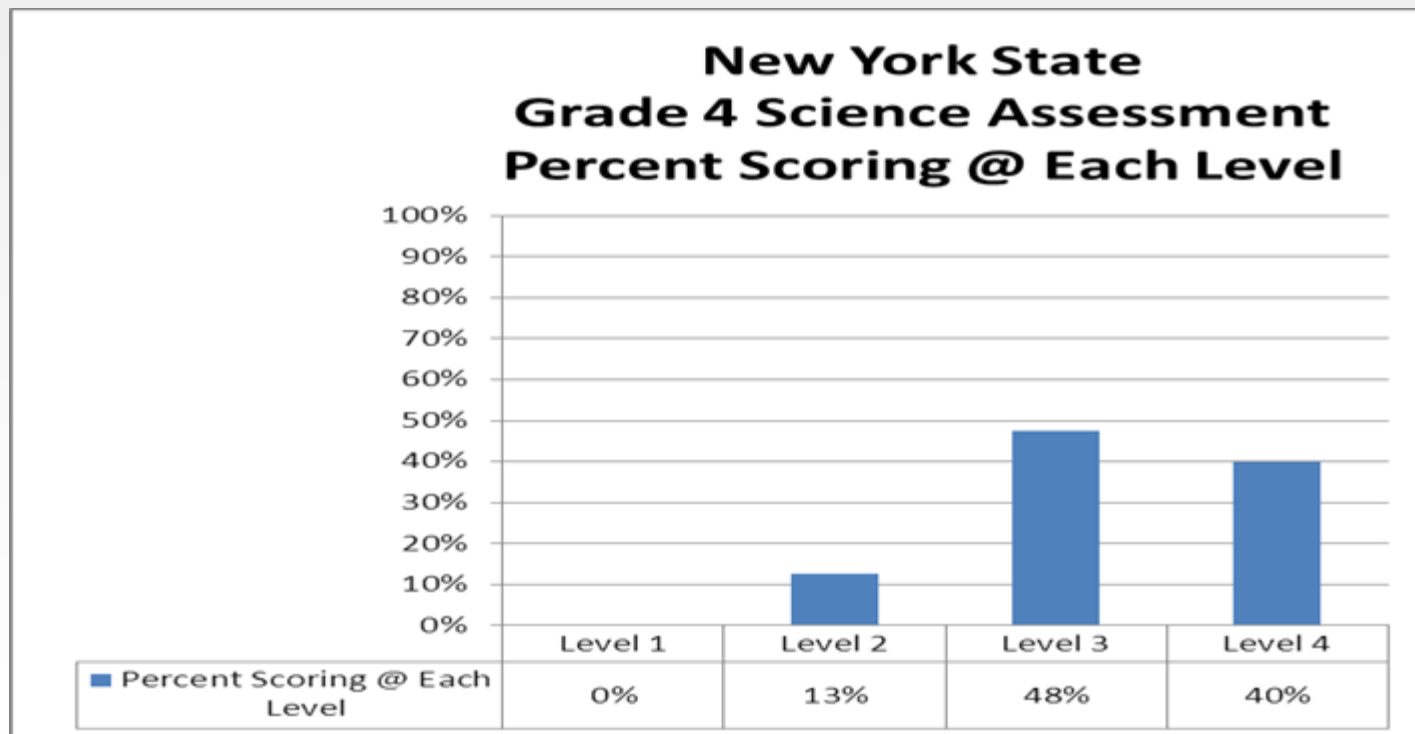
# New York State Math Assessment-Grade 6

## 2 Year Comparison- 2010-11 to 2011-12





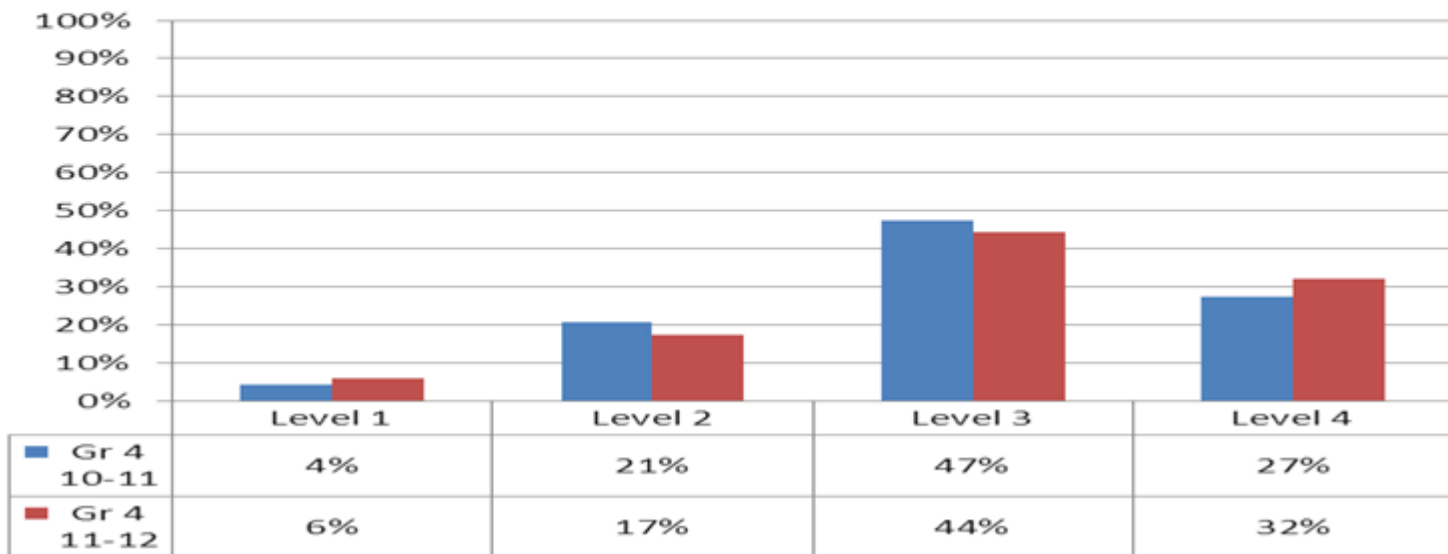
# New York State Science Assessment Grade 4 2011-12





# New York State Science Assessment Grade 4 2 Year Comparison- 2010-11 to 2011-12

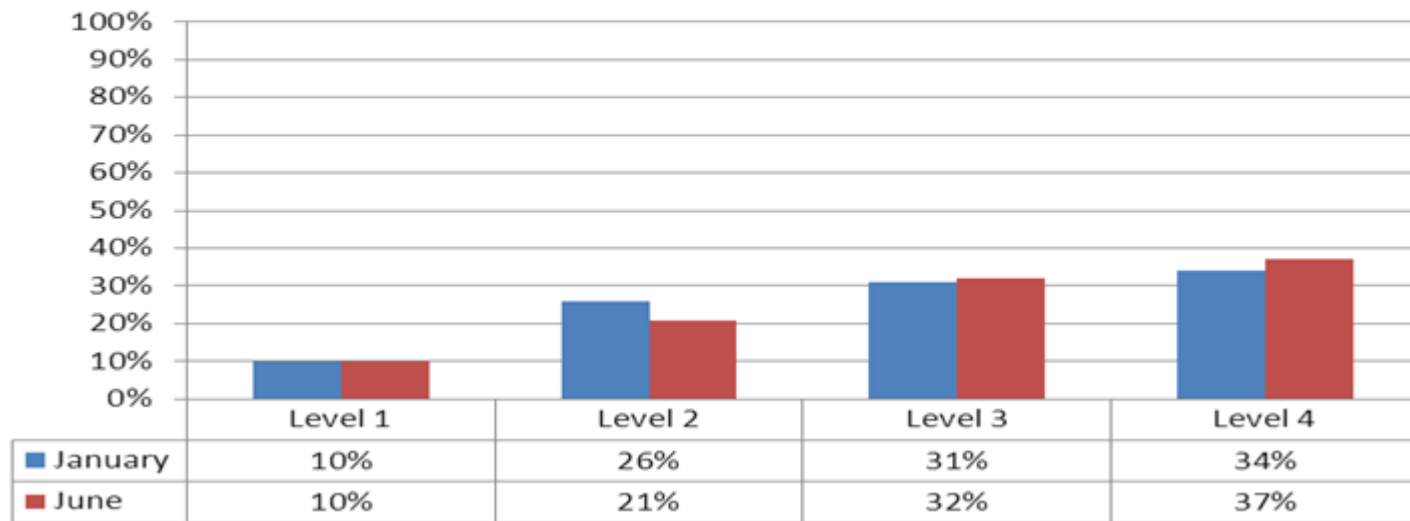
**New York State  
4th Grade Science Assessment  
Two Year Comparison  
2010-11 to 2011-12**





# Schenectady City School District Elementary Social Studies

**Schenectady City School District  
District-developed 3rd Grade Social Studies Assessment  
January to June 2012 Comparison**

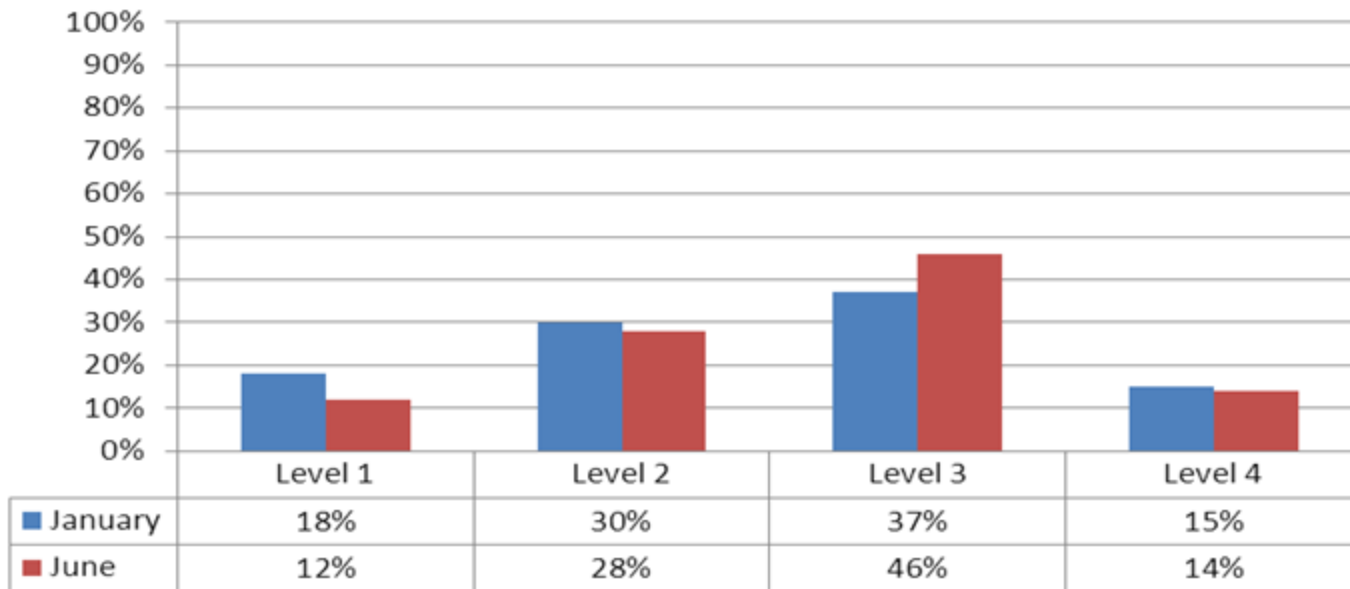






# Schenectady City School District Elementary Social Studies cont.

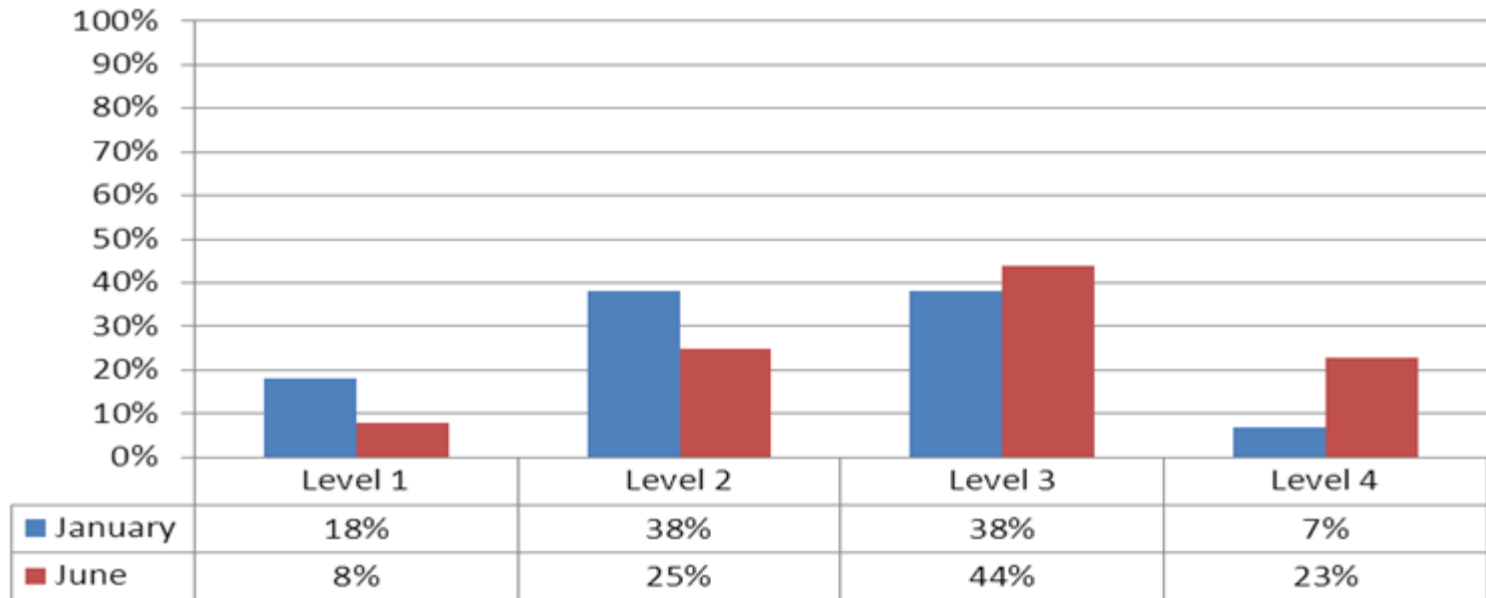
**Schenectady City School District  
District-developed 4th Grade Social Studies Assessment  
January to June 2012 Comparison**





# Schenectady City School District Elementary Social Studies cont.

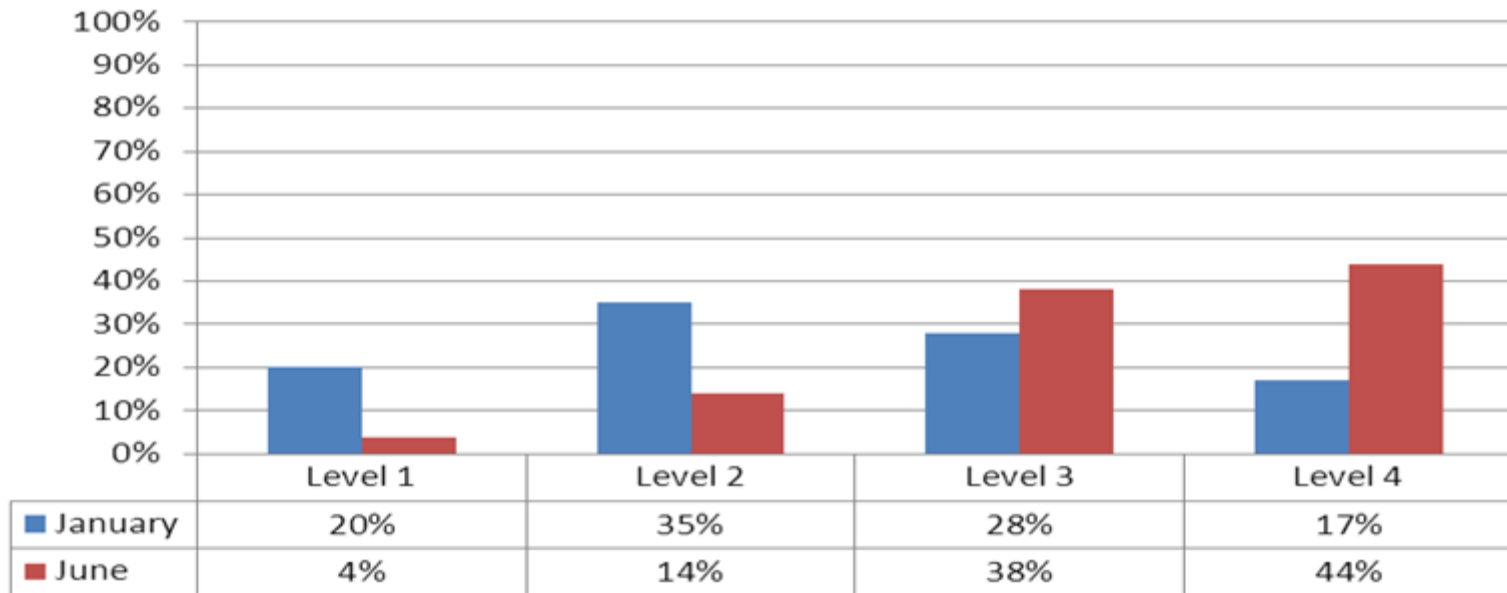
**Schenectady City School District  
District-developed 5th Grade Social Studies Assessment  
January to June 2012 Comparison**





# Schenectady City School District Elementary Social Studies cont.

**Schenectady City School District  
District-developed 6th Grade Social Studies Assessment  
January to June 2012 Comparison**





# Elementary Conclusions

- 56% of our students in grades K-6 were reading at or above grade level in June 2012.
- Between 33%-38% of our students in grades 3-6 passed the NYS ELA Assessment
- There is a disconnect between the Fountas and Pinnell reading levels and the percent of students passing the NYS ELA Assessment.
- Between 40%-45% of our students in grades 3-6 passed the NYS Math Assessment.
- As a focus district for the 2012-13 school year, an emphasis needs to be placed on ensuring success for all students but specifically for SWD, Economically disadvantaged students, Hispanic, and black students through high quality, focused instruction in all content areas.



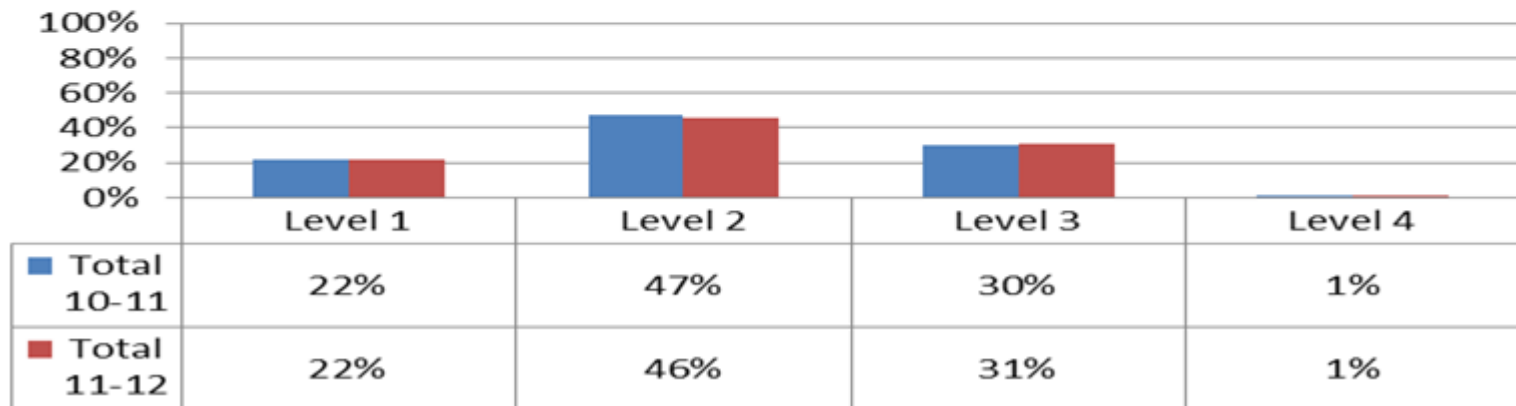
# Middle School End of Year Academic Report

- ✓ ELA
- ✓ Mathematics
- ✓ Science
- ✓ Social Studies
- ✓ Course Failure Comparisons
- ✓ Middle-level Conclusions



# New York State ELA Assessment-Total District 2 Year Comparison- 2010-11 to 2011-12

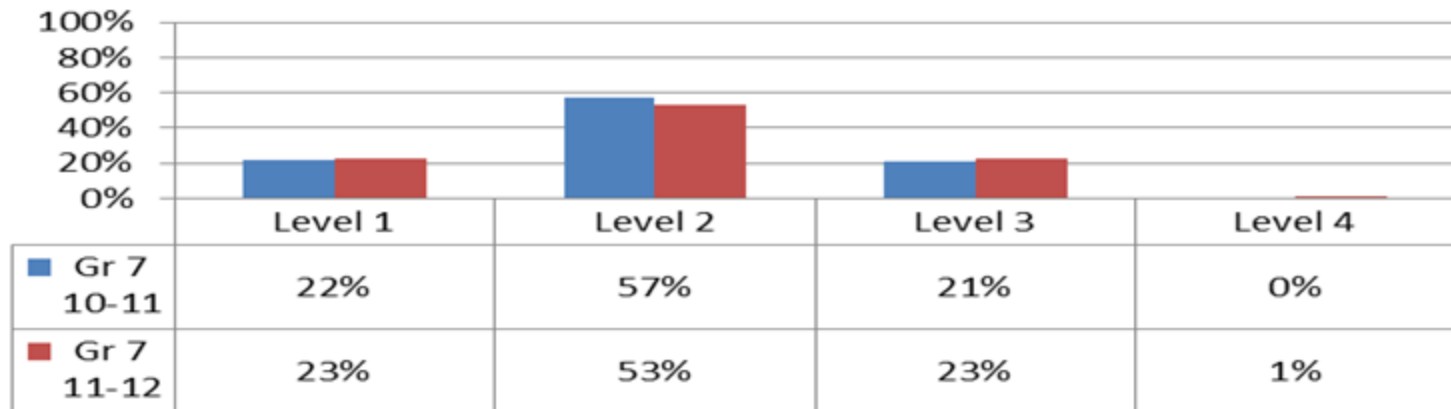
## New York State ELA Assessment Total District Two Year Comparison 2010-11 to 2011-12





# New York State ELA Assessment-Grade 7 2 Year Comparison- 2010-11 to 2011-12

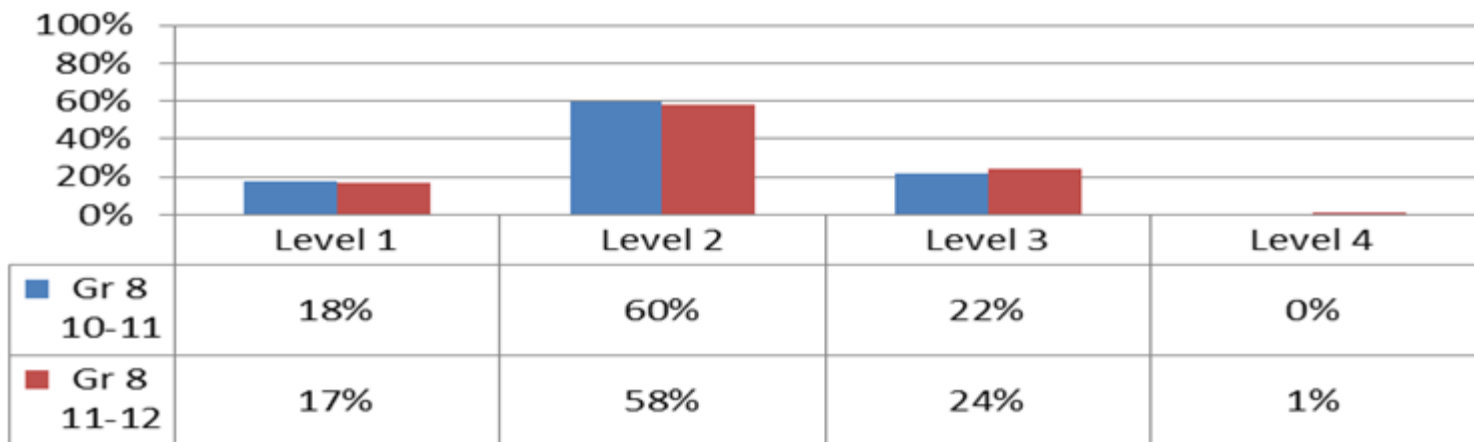
## New York State ELA Assessment Grade 7 Two Year Comparison 2010-11 to 2011-12





# New York State ELA Assessment-Grade 8 2 Year Comparison- 2010-11 to 2011-12

## New York State ELA Assessment Grade 8 Two Year Comparison 2010-11 to 2011-12

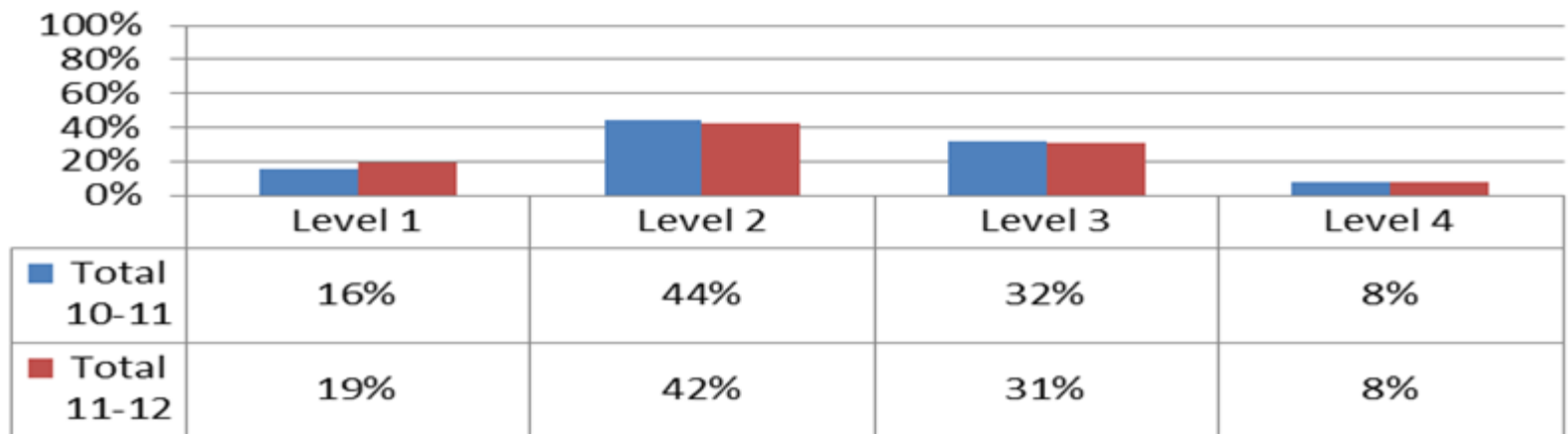






# New York State Math Assessment-Total District 2 Year Comparison- 2010-11 to 2011-12

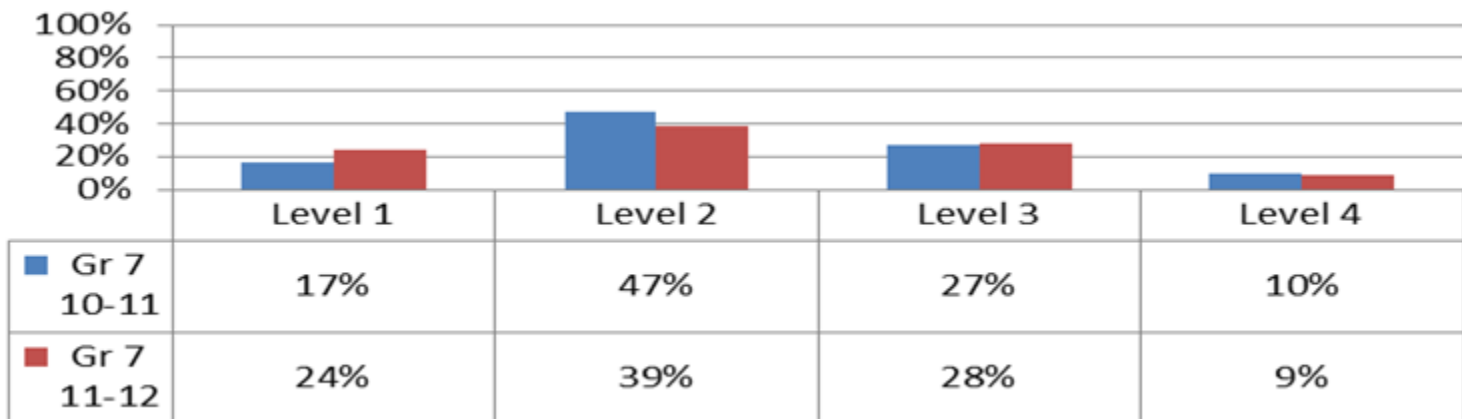
## New York State Math Assessment Total District Two Year Comparison 2010-11 to 2011-12





# New York State Math Assessment-Grade 7 2 Year Comparison- 2010-11 to 2011-12

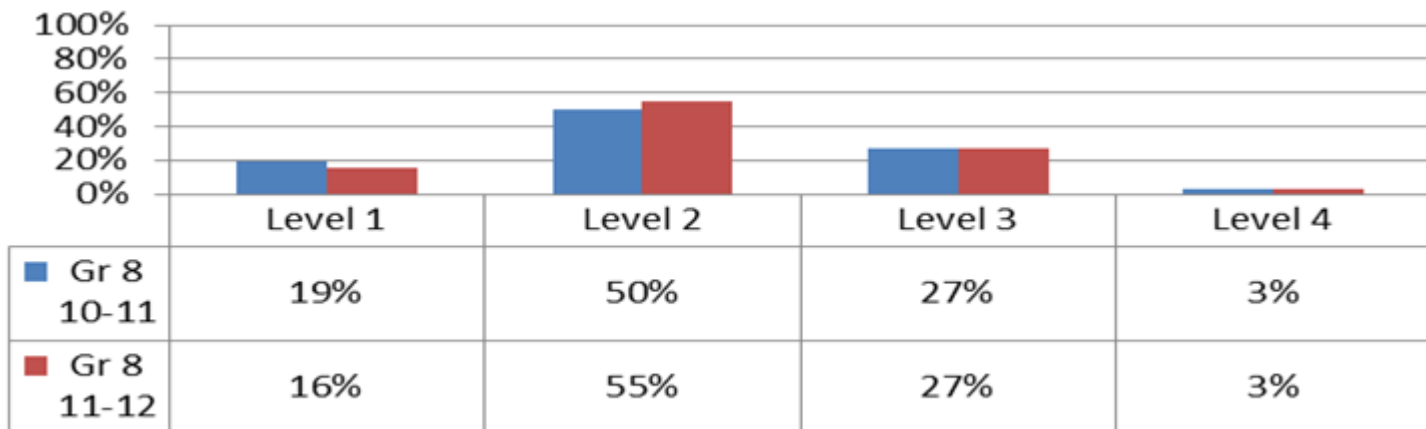
## New York State Math Assessment Grade 7 Two Year Comparison 2010-11 to 2011-12





# New York State Math Assessment-Grade 8 2 Year Comparison- 2010-11 to 2011-12

## New York State Math Assessment Grade 8 Two Year Comparison 2010-11 to 2011-12

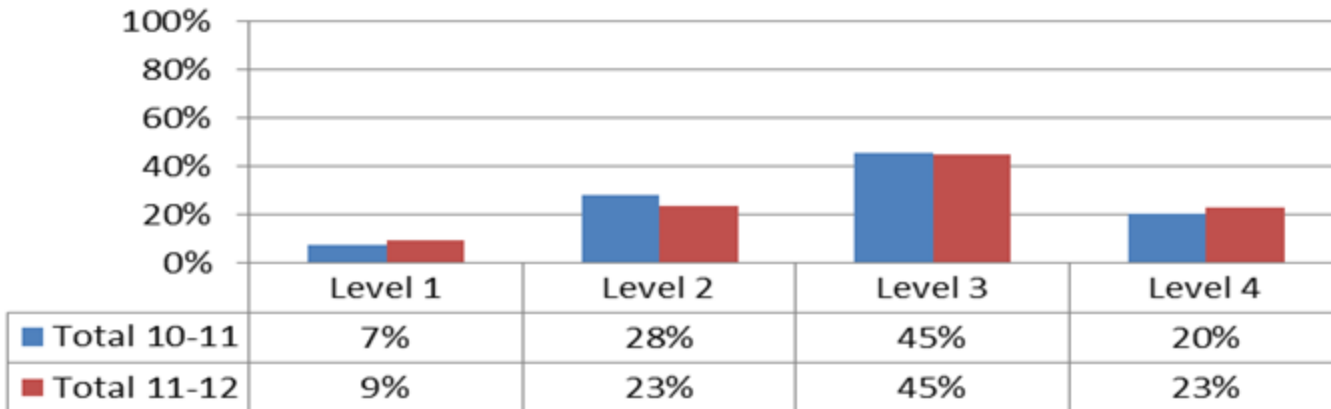




# New York State Science Assessment-Total District

## 2 Year Comparison- 2010-11 to 2011-12

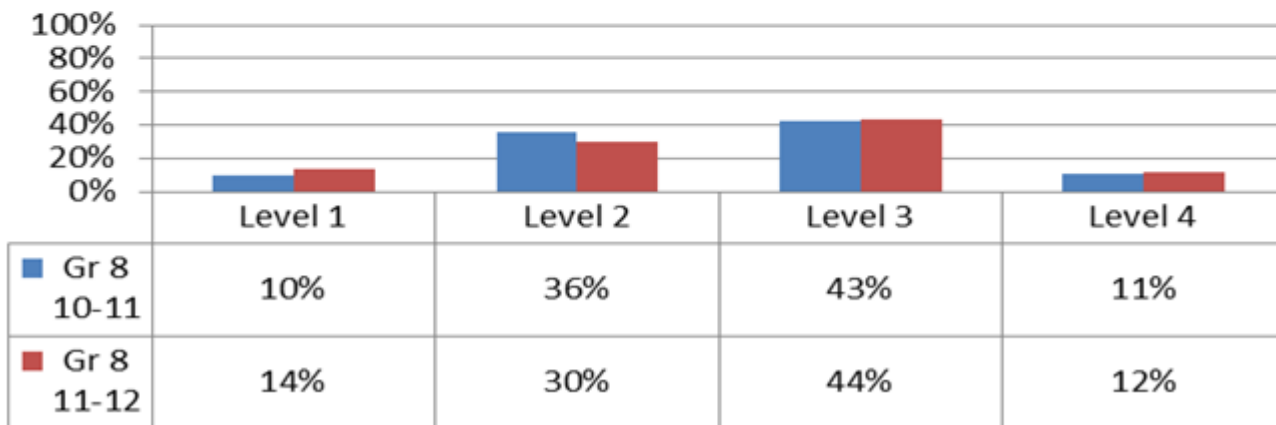
**New York State Science Assessment  
Total District  
Two Year Comparison  
2010-11 to 2011-12**





# New York State Science Assessment-Grade 8 2 Year Comparison- 2010-11 to 2011-12

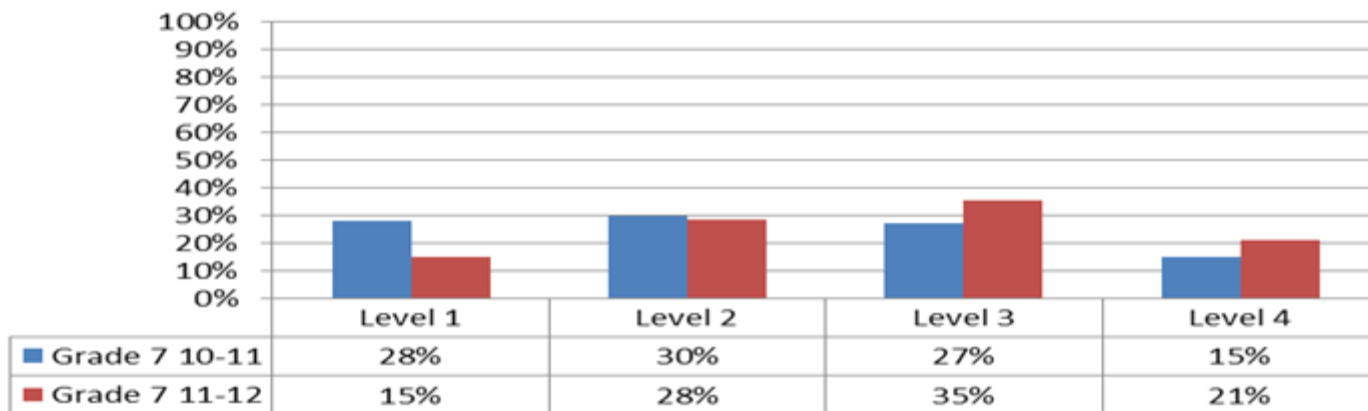
## New York State Science Assessment Grade 8 Two Year Comparison 2010-11 to 2011-12





# New York State SS Final Exam-Grade 7 2 Year Comparison- 2010-11 to 2011-12

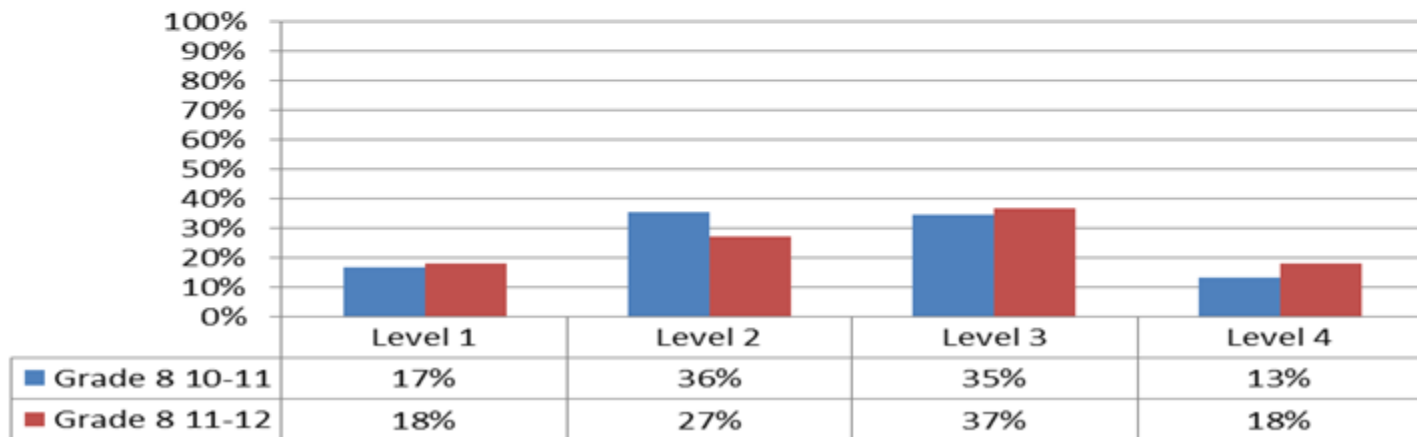
**Schenectady City School District  
District-developed Final Exam  
Grade 7  
Two Year Comparison  
2010-11 to 2011-12**





# New York State SS Final Exam-Grade 8 2 Year Comparison- 2010-11 to 2011-12

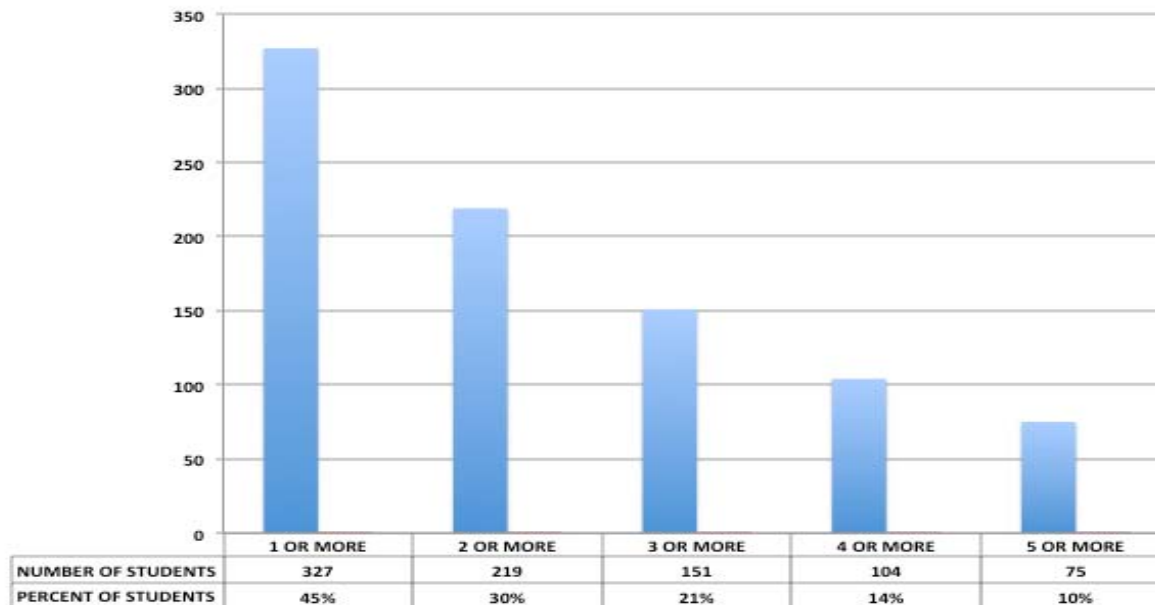
## Schenectady City School District District-developed Final Exam Grade 8 Two Year Comparison 2010-11 to 2011-12





# Middle Level Course Failures

**Schenectady City School District  
7th Grade Students Failing One or More Courses  
2011-12  
(n=730)**

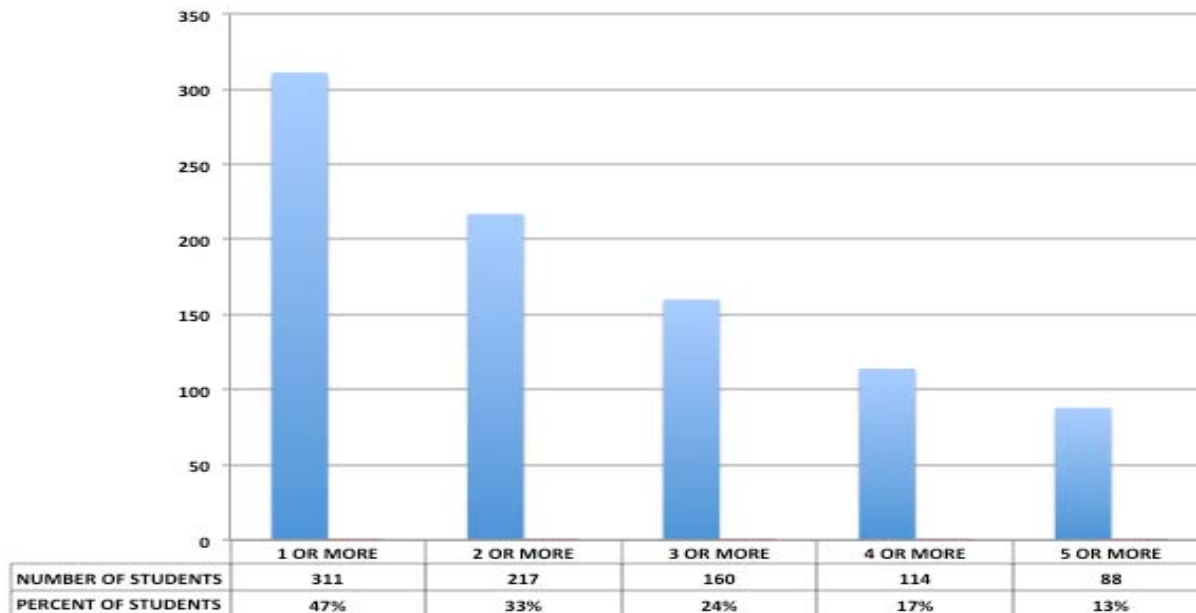






# Middle Level Course Failures cont.

**Schenectady City School District  
8th Grade Students Failing One or More Courses  
2011-12  
(n=665)**





# Middle-level Conclusions

- Between 23%-25% of our students in grades 7-8 passed the NYS ELA Assessment
- Between 30%-37% of our students in grades 7-8 passed the NYS Math Assessment.
- 757 out of 1395 students passed all courses in grades 7 and 8 (54%)
- 45% of 7<sup>th</sup> graders failed one or more courses
- 47% of 8<sup>th</sup> graders failed one or more courses
- 8 students failed all courses
- As a district, we struggle greatly with attendance and need to do a much better job at getting more students to school every day.
- Almost 39% of our 7<sup>th</sup> and 8<sup>th</sup> graders had one or more discipline referrals
- Literacy skills seem to be the root cause with achievement on the NYS assessment
- As a focus district for the 2012-13 school year, an emphasis needs to be placed on ensuring success for all students but specifically for SWD, Economically disadvantaged students, Hispanic, and black students through high quality, focused instruction in all content areas.

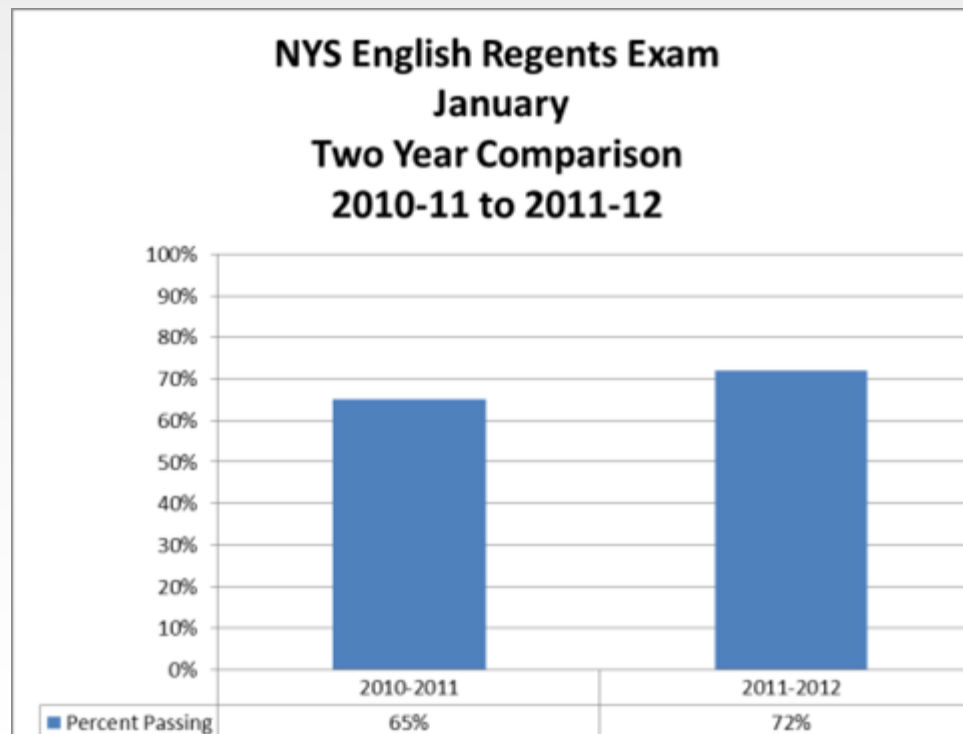


# High School End of the Year Academic Report

- ✓ ELA
- ✓ Math
- ✓ Science
- ✓ Social Studies
- ✓ Foreign Language
- ✓ Course Failure Comparisons
- ✓ Attendance, Discipline, Graduation Rates, and Drop-out Comparisons
- ✓ High School Comparisons

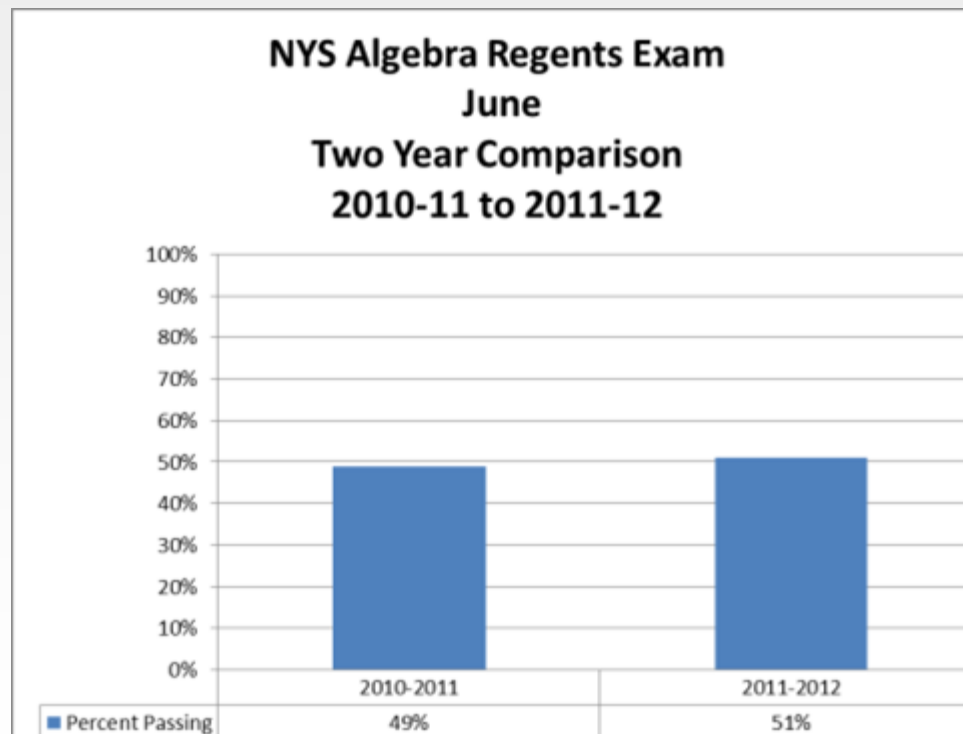


# New York State English Regents 2 Year Comparison- 2010-11 to 2011-12



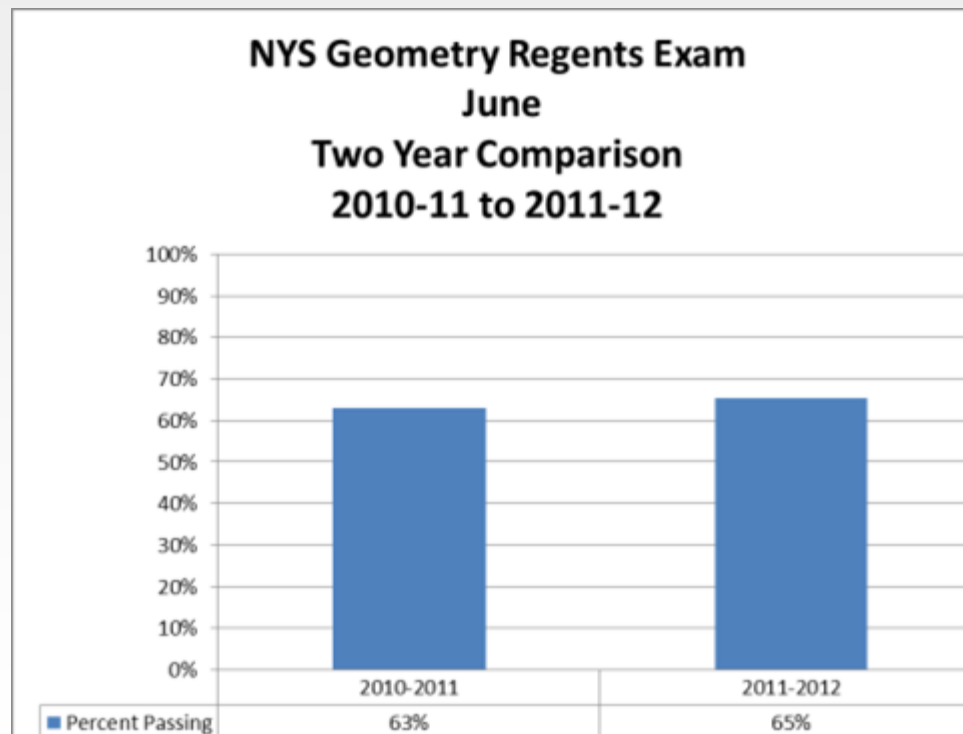


# New York State Algebra Regents 2 Year Comparison- 2010-11 to 2011-12



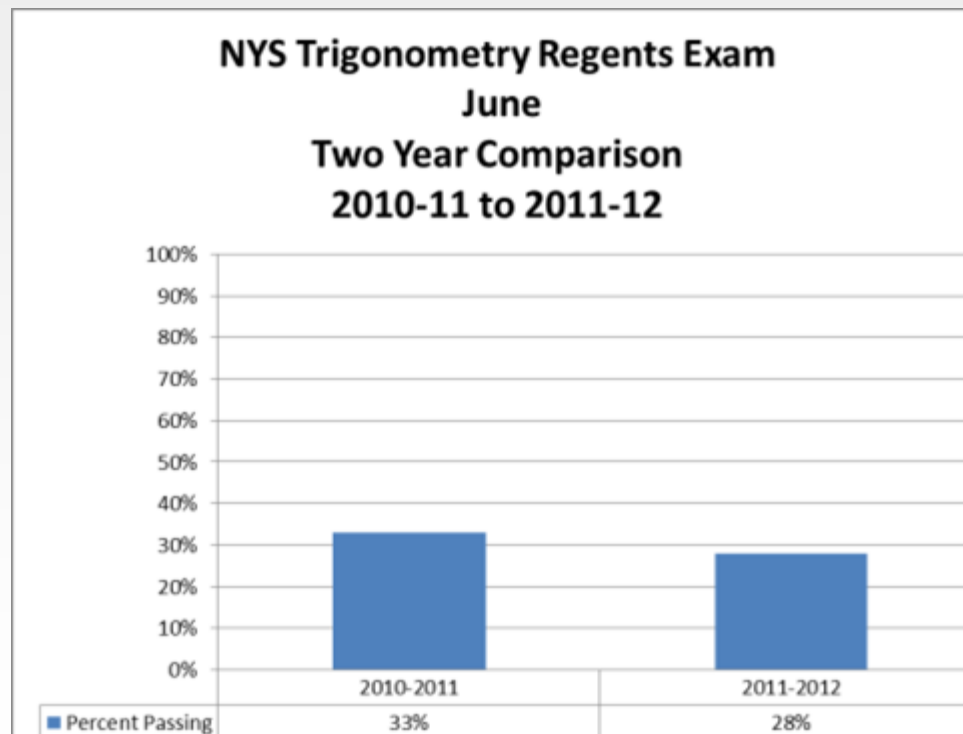


# New York State Geometry Regents 2 Year Comparison- 2010-11 to 2011-12



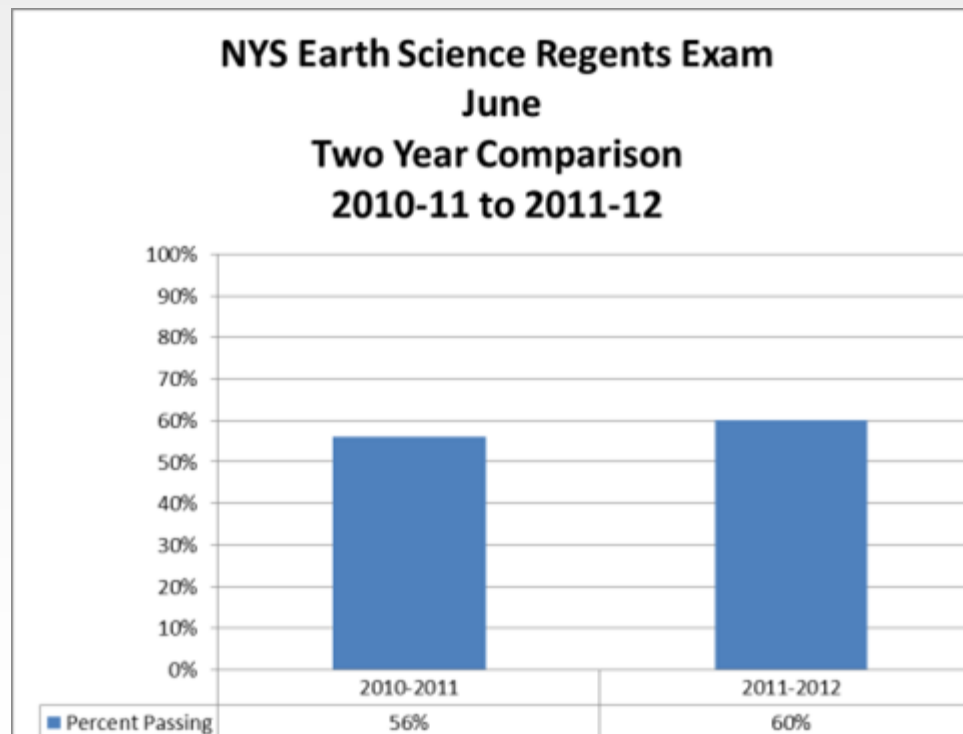


# New York State Trigonometry Regents 2 Year Comparison- 2010-11 to 2011-12





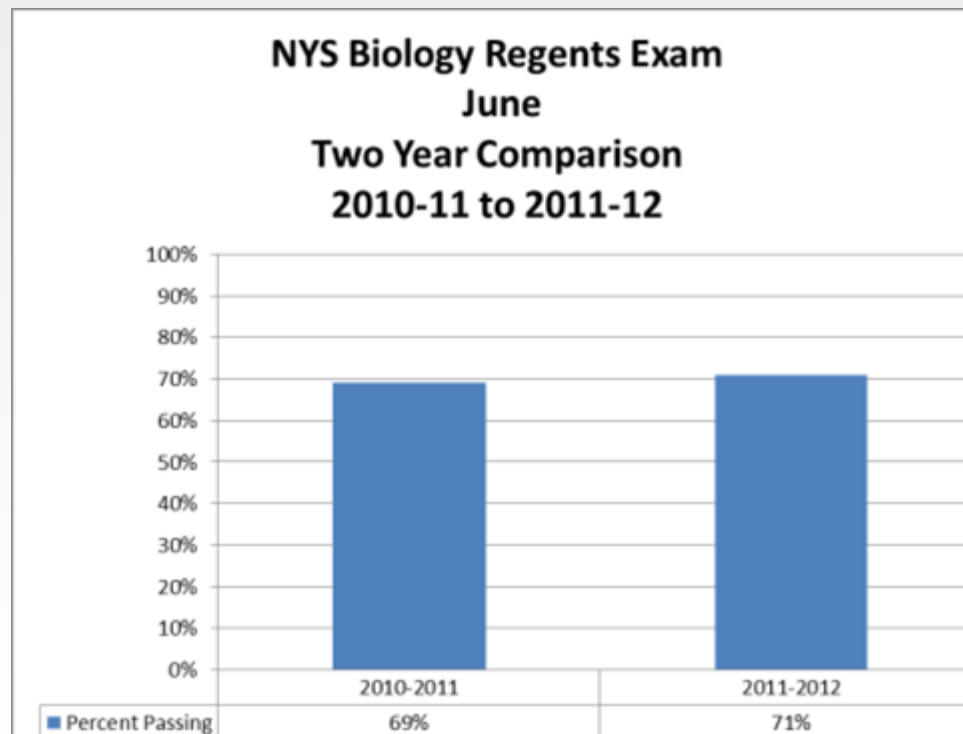
# New York State Earth Science Regents 2 Year Comparison- 2010-11 to 2011-12





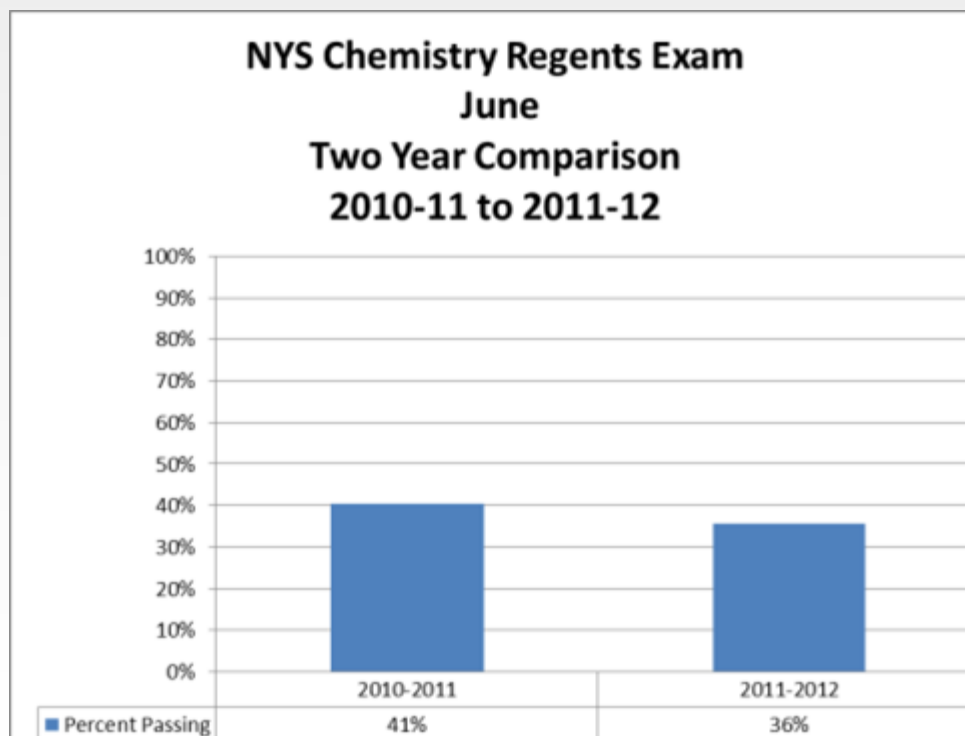


# New York State Biology Regents 2 Year Comparison- 2010-11 to 2011-12



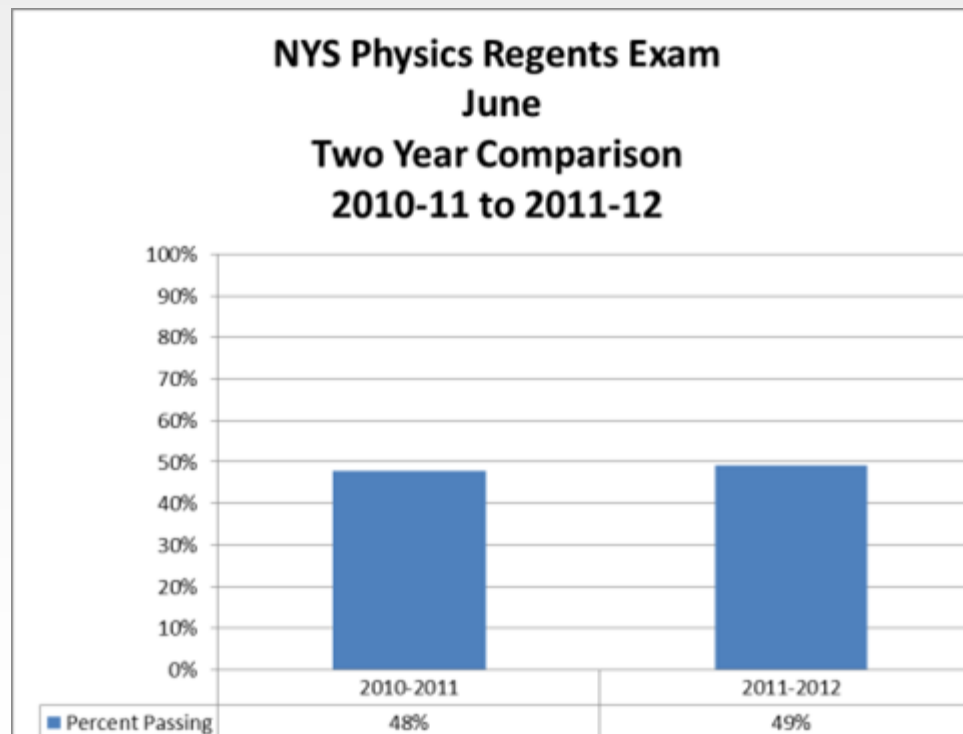


# New York State Chemistry Regents 2 Year Comparison- 2010-11 to 2011-12





# New York State Physics Regents 2 Year Comparison- 2010-11 to 2011-12



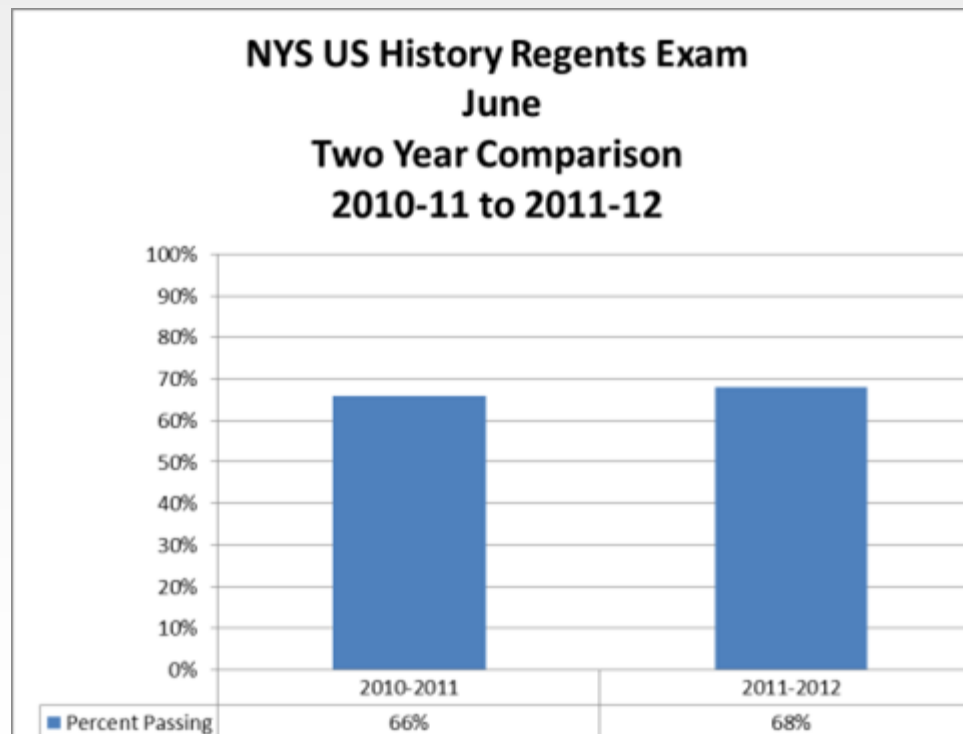


# New York State Global History Regents 2 Year Comparison- 2010-11 to 2011-12





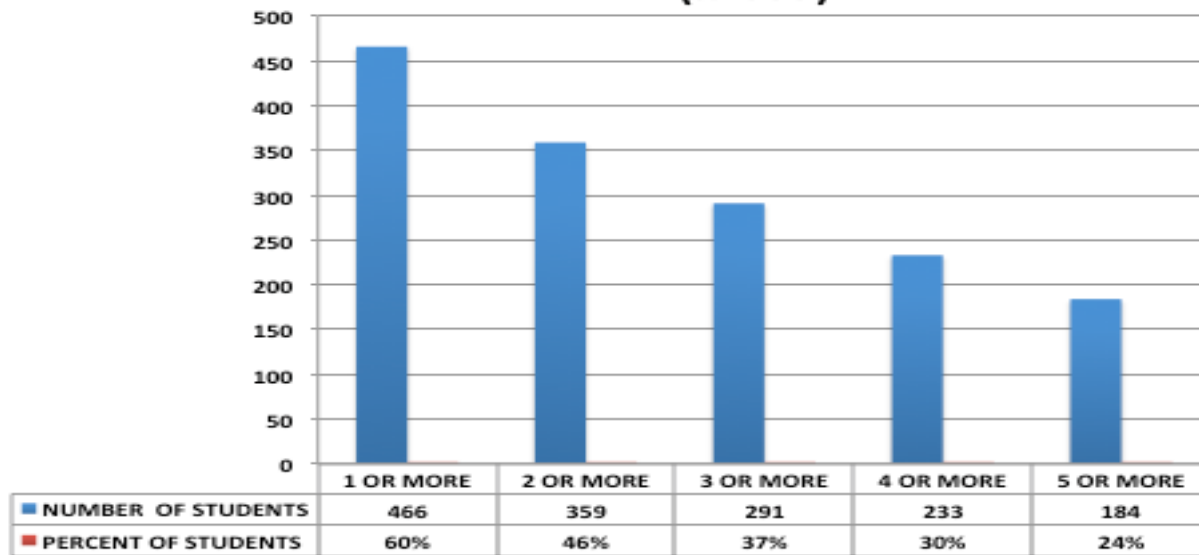
# New York State US History Regents 2 Year Comparison- 2010-11 to 2011-12





# High School Course Failures

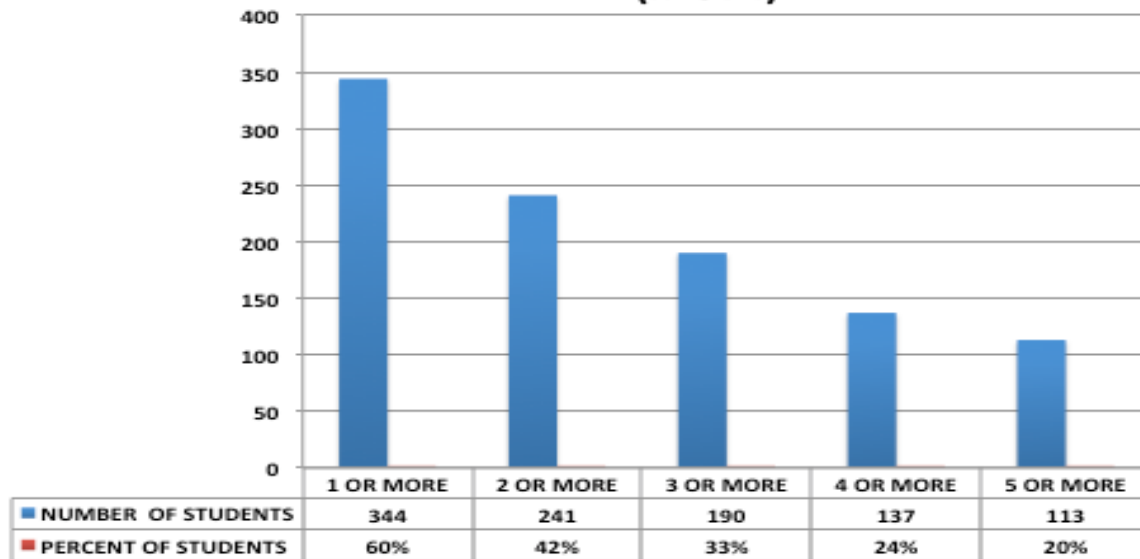
**Schenectady City School District  
9th Grade Students Failing One or More Courses  
2011-2012  
(n=777)**





# High School Course Failures cont.

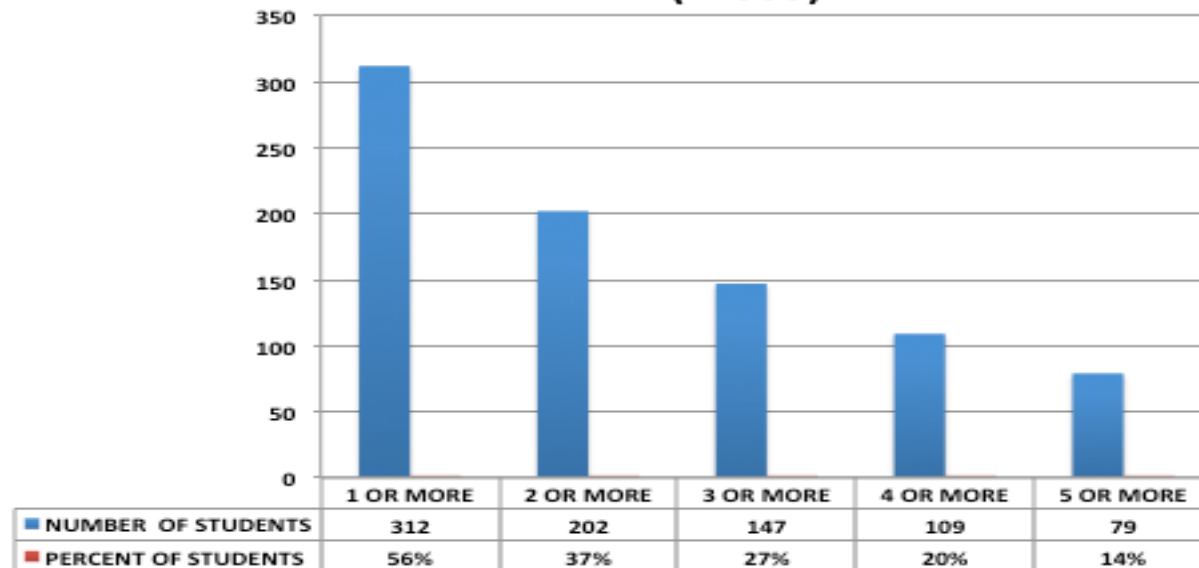
**Schenectady City School District  
10th Grade Students Failing One or More Courses  
2011-2012  
(n=574)**





# High School Course Failures cont.

**Schenectady City School District  
11th Grade Students Failing One or More Courses  
2011-2012  
(n=553)**

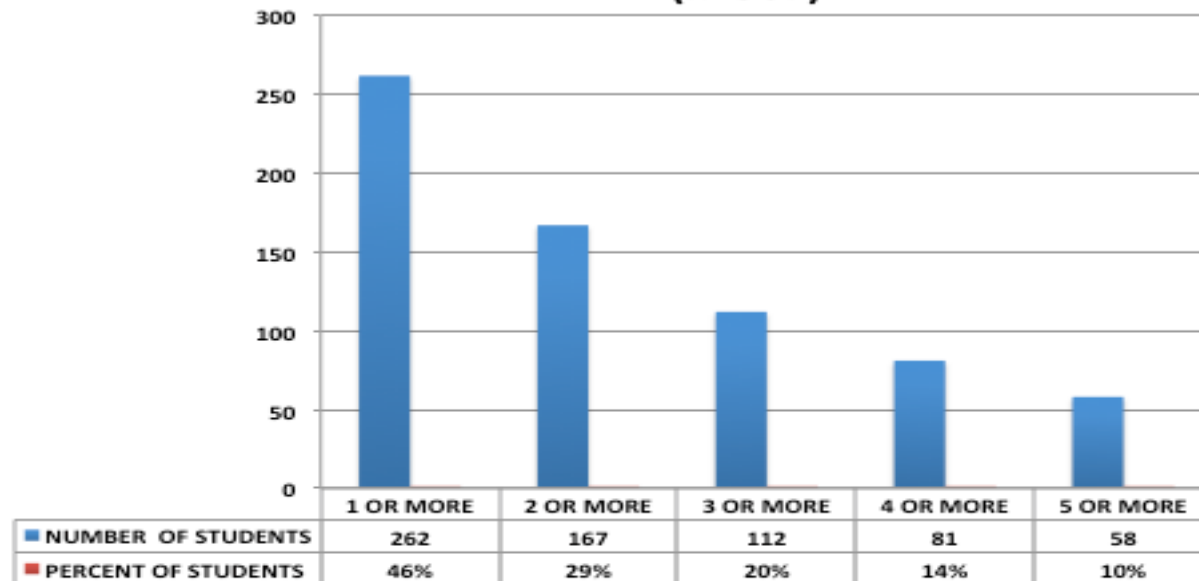






# High School Course Failures cont.

**Schenectady City School District  
12th Grade Students Failing One or More Courses  
2011-2012  
(n=567)**





# High School Conclusions

- The following Regents Exams have seen an increase in percent passing:
  - English Regents Exam : 7% increase
  - Algebra Regents: 2% increase
  - Earth Science: 4% increase
  - Global History: 3% increase
  - US History: 2% increase

## Course failures

- 46%-60% of our high school students failed one or more courses
- Nearly 2/3 of our 9<sup>th</sup> graders failed one or more courses
- Almost 25% of our 9<sup>th</sup> graders failed 5 or more courses
- As a district, we struggle greatly with attendance and need to do a much better job at getting more students to school every day.
- Over 45% of our 9-12 grade students had one or more discipline referrals
- Literacy skills seem to be the root cause with achievement on the NYS assessment
- As a focus district for the 2012-13 school year, an emphasis needs to be placed on ensuring success for all students but specifically for SWD, Economically disadvantaged students, Hispanic, and black students through high quality, focused instruction in all content areas.

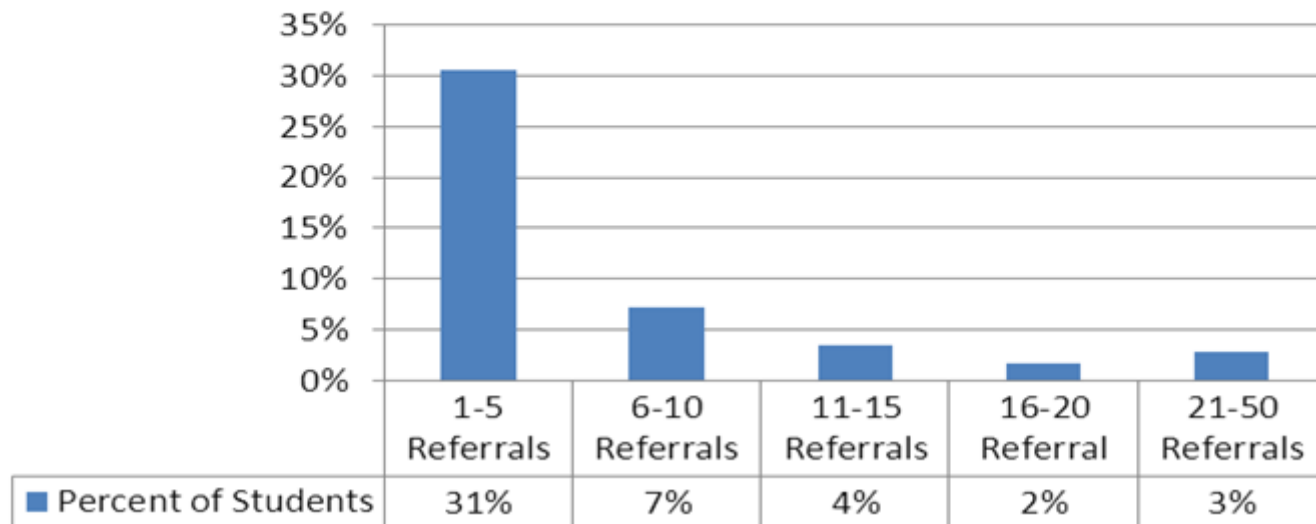


# Student Discipline Referrals 2011-12



# Schenectady City School District Discipline Referrals: 2011-12

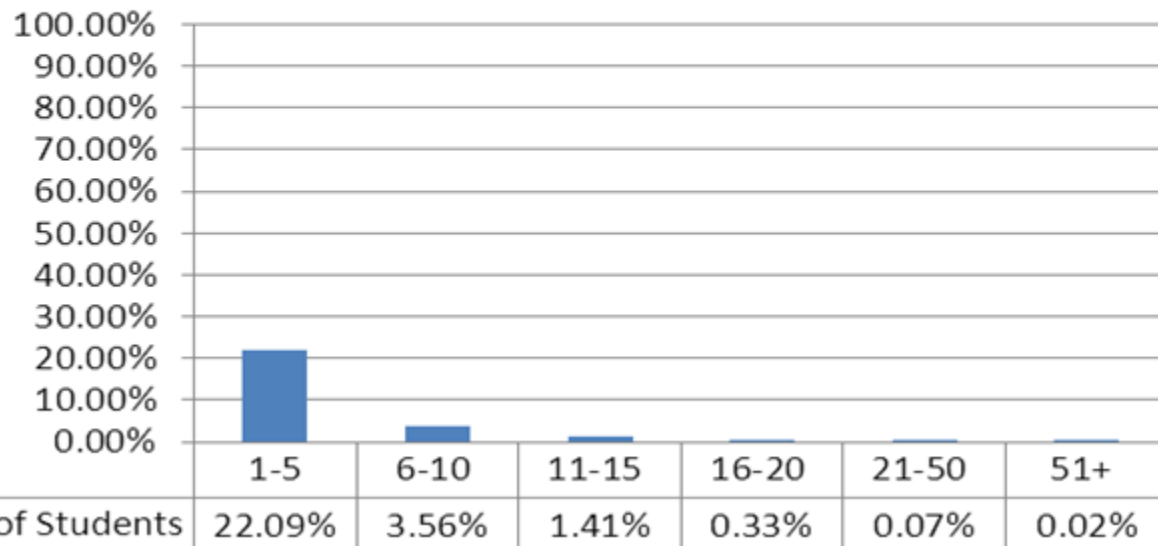
**Schenectady City School District  
2011-12 Discipline Referrals**





# Schenectady City School District: Discipline Referrals 2011-12 cont.

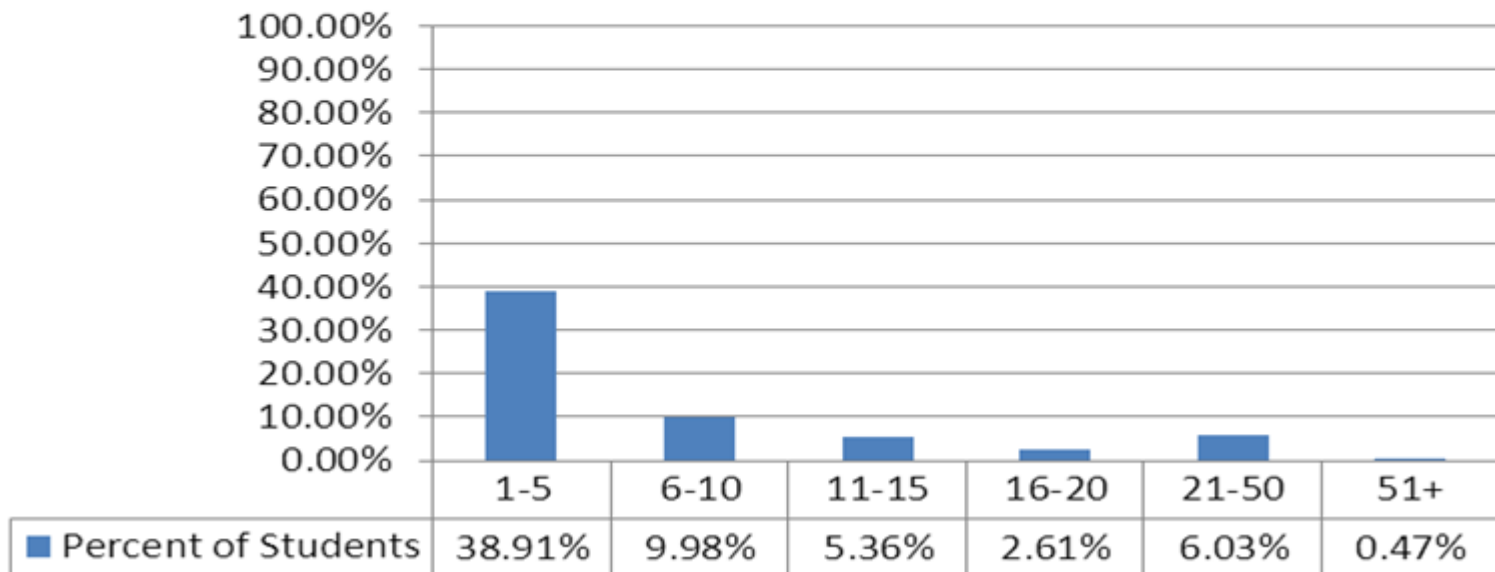
## Elementary: K-6 2011-12 Discipline Referrals





# Schenectady City School District: Discipline Referrals 2011-12 cont.

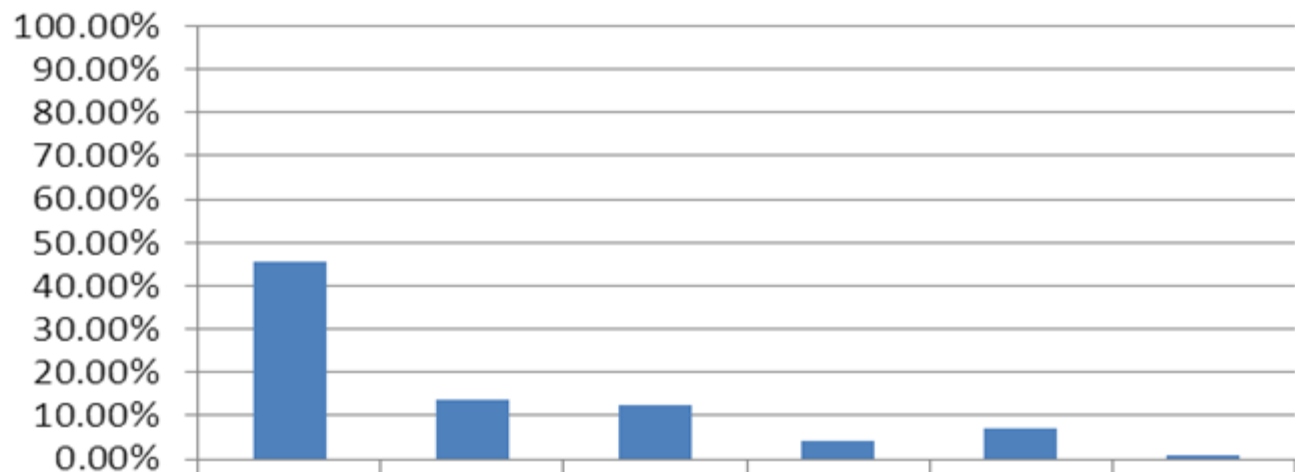
## Middle-level: 7-8 2011-12 Discipline Referrals





# Schenectady City School District: Discipline Referrals 2011-12 cont.

## High School: 9-12 2011-12 Discipline Referrals



■ Percent of Students	45.43%	13.72%	12.32%	4.37%	6.94%	0.68%
-----------------------	--------	--------	--------	-------	-------	-------



# Student Absences 2011-12

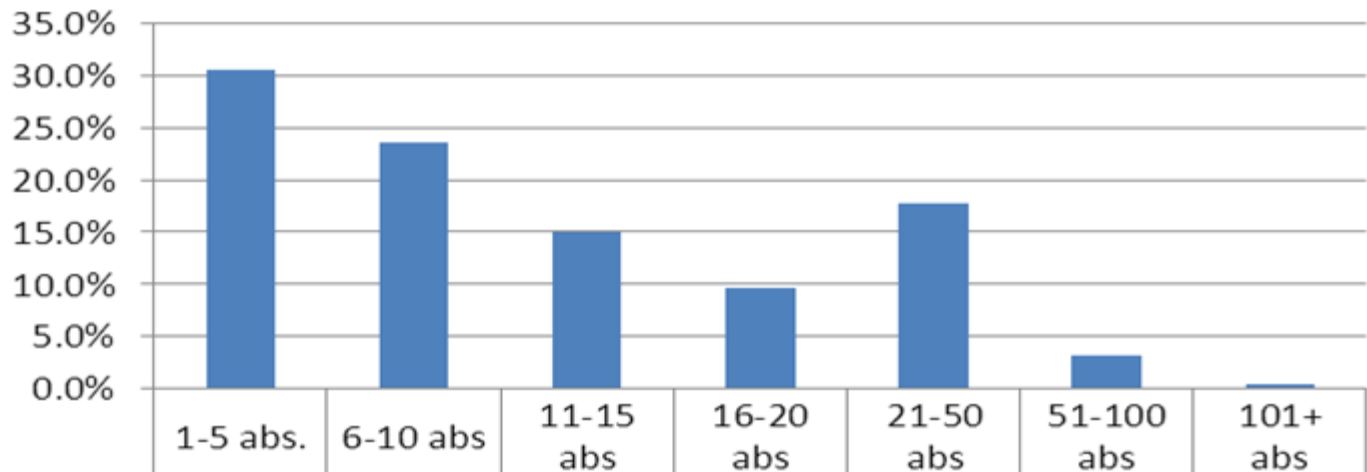




# Schenectady City School District

## Attendance: 2011-12

### District- Kindergarten through 12th Grade Student Absences for 2011-12



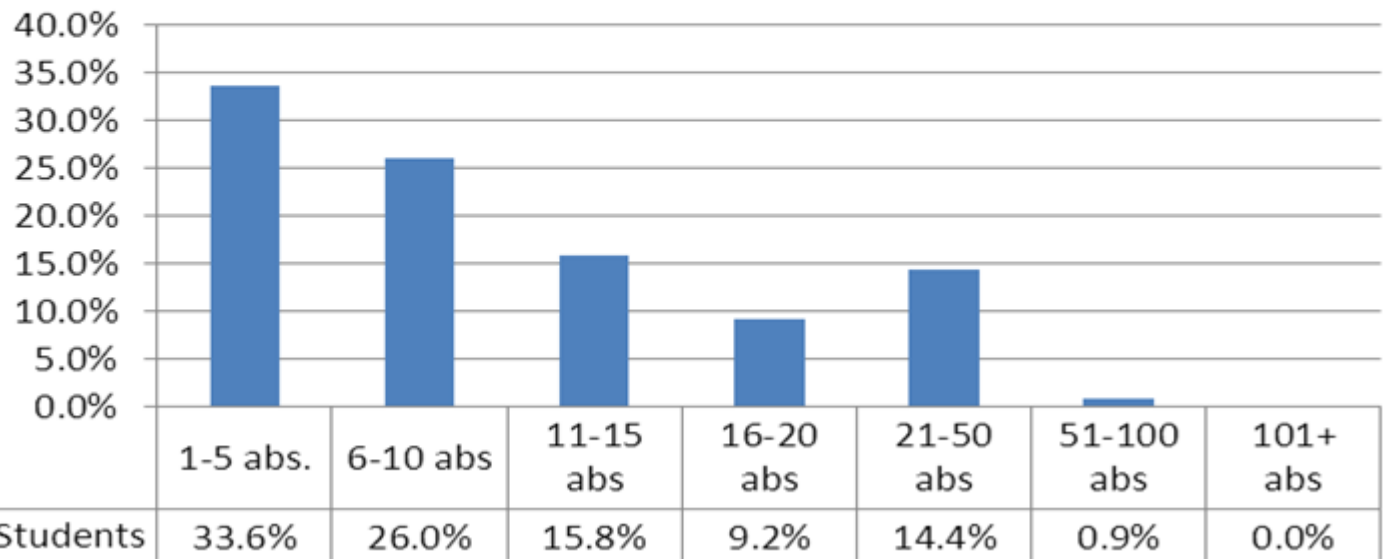
■ Percent of Students	30.6%	23.5%	15.0%	9.6%	17.8%	3.2%	0.4%
-----------------------	-------	-------	-------	------	-------	------	------



# Schenectady City School District

## Attendance: 2011-12 cont.

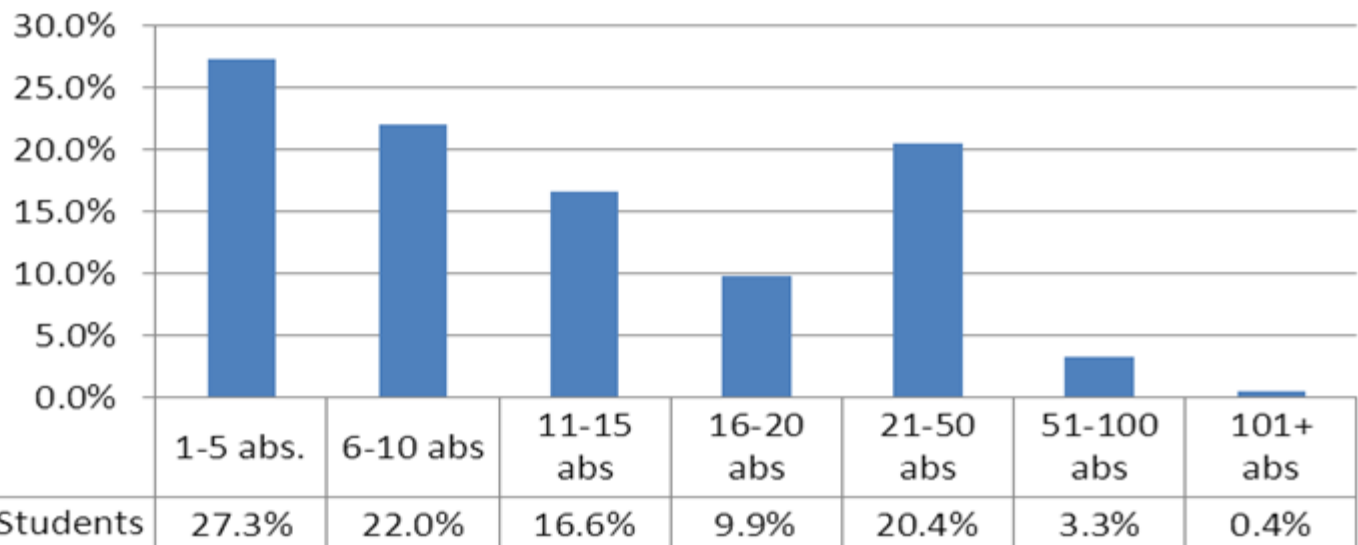
### Elementary:K-6 Student Absences for 2011-12





# Schenectady City School District Attendance: 2011-12 cont.

## Middle Level: 7-8 Student Absences for 2011-12





# Schenectady City School District Attendance: 2011-12 cont.

## High School: 9-12 Student Absences for 2011-12

