



SCHENECTADY CITY SCHOOL DISTRICT

2015-2016 School Year

Instructional Review of Second Quarter

Presented by the Office of Curriculum and Instruction

March 2, 2016

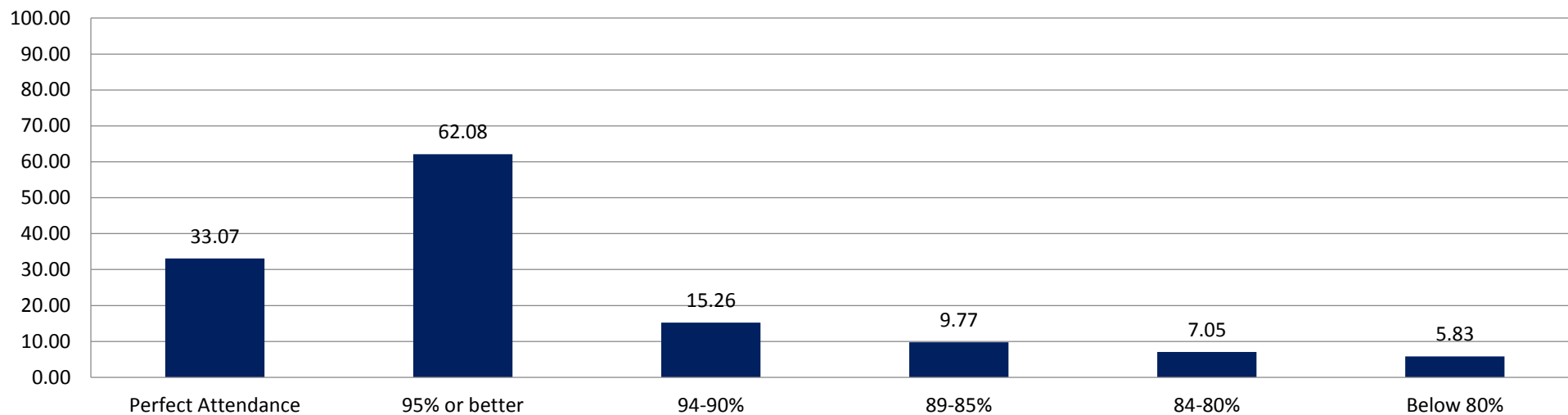
.....
Everybody Counts. Everybody Learns.

Schenectady City School District's Instructional Priorities for 2015-2016

- **Commitment to high quality instruction**
- **Increase student achievement by 8%**
- **Monitoring and using data to design and support interventions for all students**
- **Provision of Professional Development with a focus on Scaffolding and Formative Assessments**

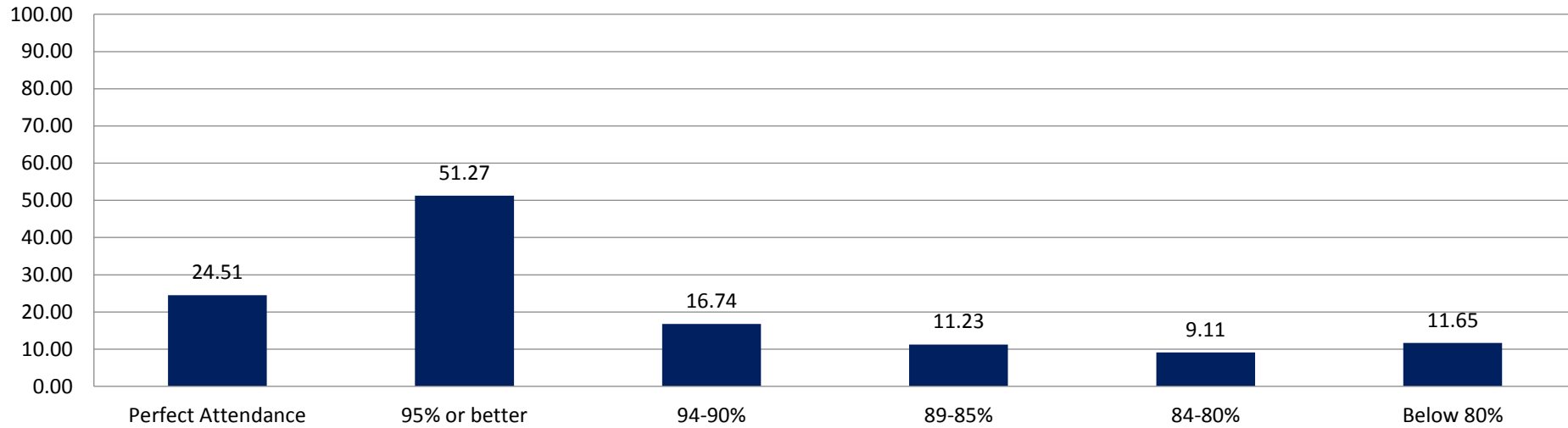
Attendance

K-6th Q2 Attendance 2015-2016



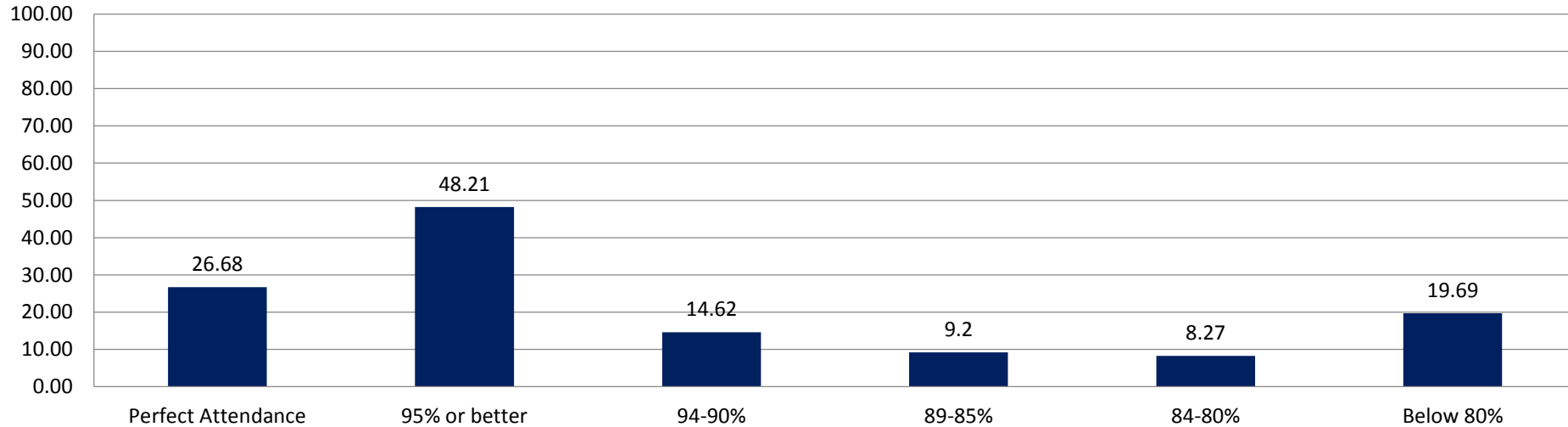
	Perfect Attendance	95% or better	94-90%	89-85%	84-80%	Below 80%
■ Pct of Students (n=5760)	33.07	62.08	15.26	9.77	7.05	5.83
■ Pct of Paid (n=1257)	43.75	71.04	12.89	7.48	4.61	3.98
■ Pct of F/R (n=4503)	30.09	59.58	15.92	10.42	7.73	6.35
■ Pct of Race: Am. Indian (n=3)	0	0	100	0	0	0
■ Pct of Race: Asian (n=854)	42.62	72.37	12.18	7.03	5.85	2.58
■ Pct of Race: Black (n=1761)	34.01	63.09	16.13	9.09	5.91	5.79
■ Pct of Race: Hispanic (n=1223)	26.33	53.39	16.93	11.12	9.24	9.32
■ Pct of Race: Mixed (n=463)	30.67	59.83	17.06	11.02	7.34	4.75
■ Pct of Race: Pacific Is. (n=6)	0	33.33	33.33	33.33	0	0
■ Pct of Race: White (n=1450)	32.97	63.1	13.79	10.62	7.24	5.24
■ Pct of Non-LEP (n=5529)	33.28	62.54	15.05	9.77	6.8	5.84
■ Pct of LEP (n=231)	28.14	51.08	20.35	9.96	12.99	5.63
■ Pct of Non-IEP (n=4892)	33.42	62.69	15.37	9.55	7.11	5.27
■ Pct of IEP (n=868)	31.11	58.64	14.63	11.06	6.68	8.99

7-8th Q2 Attendance Data 2015-2016



■ Pct of Students (n=1416)	24.51	51.27	16.74	11.23	9.11	11.65
■ Pct of Paid (n=275)	41.09	68	16	8.73	3.64	3.64
■ Pct of F/R (n=1141)	20.51	47.24	16.91	11.83	10.43	13.58
■ Pct of Race: Am. Indian (n=1)	0	100	0	0	0	0
■ Pct of Race: Asian (n=251)	37.45	64.94	19.52	7.97	3.59	3.98
■ Pct of Race: Black (n=512)	23.83	54.1	14.26	10.55	10.16	10.94
■ Pct of Race: Hispanic (n=244)	20.08	40.16	17.21	10.25	13.52	18.85
■ Pct of Race: Mixed (n=16)	12.5	37.5	12.5	25	0	25
■ Pct of Race: Pacific Is. (n=1)	100	100	0	0	0	0
■ Pct of Race: White (n=391)	20.2	46.04	18.16	14.32	8.95	12.53
■ Pct of Non-LEP (n=1371)	24.29	51.28	16.78	11.38	9.04	11.52
■ Pct of LEP (n=45)	31.11	51.11	15.56	6.67	11.11	15.56
■ Pct of Non-IEP (n=1126)	26.47	53.2	16.7	11.01	8.88	10.21
■ Pct of IEP (n=290)	16.9	43.79	16.9	12.07	10	17.24

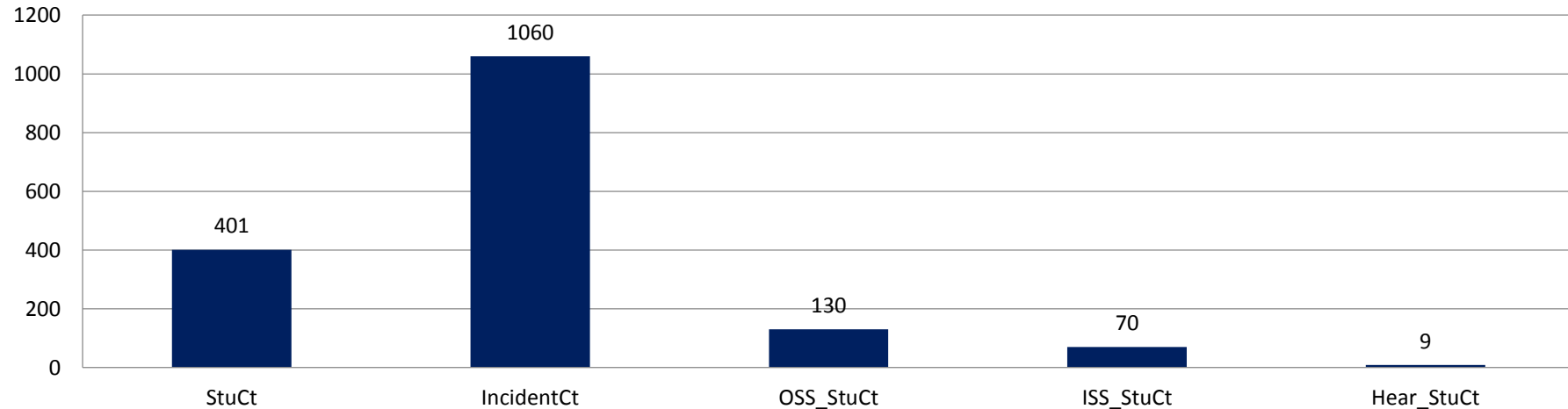
9-12th Q2 Attendance Data 2015-2016



■ Pct of Students (n=2879)	26.68	48.21	14.62	9.2	8.27	19.69
■ Pct of Paid (n=822)	44.28	65.45	11.31	6.81	4.5	11.92
■ Pct of F/R (n=2057)	19.64	41.32	15.95	10.16	9.77	22.8
■ Pct of Race: Am. Indian (n=4)	25	50	25	25	0	0
■ Pct of Race: Asian (n=557)	30.34	55.83	15.44	6.64	7.72	14.36
■ Pct of Race: Black (n=1026)	25.54	46.78	12.87	10.14	9.06	21.15
■ Pct of Race: Hispanic (n=463)	22.46	39.31	13.39	10.15	9.29	27.86
■ Pct of Race: Mixed (n=31)	16.13	29.03	19.35	16.13	12.9	22.58
■ Pct of Race: Pacific Is. (n=1)	0	0	0	100	0	0
■ Pct of Race: White (n=797)	28.48	50.69	16.81	8.78	6.9	16.81
■ Pct of Non-LEP (n=2784)	26.58	48.24	14.69	9.38	8.3	19.4
■ Pct of LEP (n=95)	29.47	47.37	12.63	4.21	7.37	28.42
■ Pct of Non-IEP (n=2441)	27.53	49.37	14.5	8.81	8.23	19.09
■ Pct of IEP (n=438)	21.92	41.78	15.3	11.42	8.45	23.06

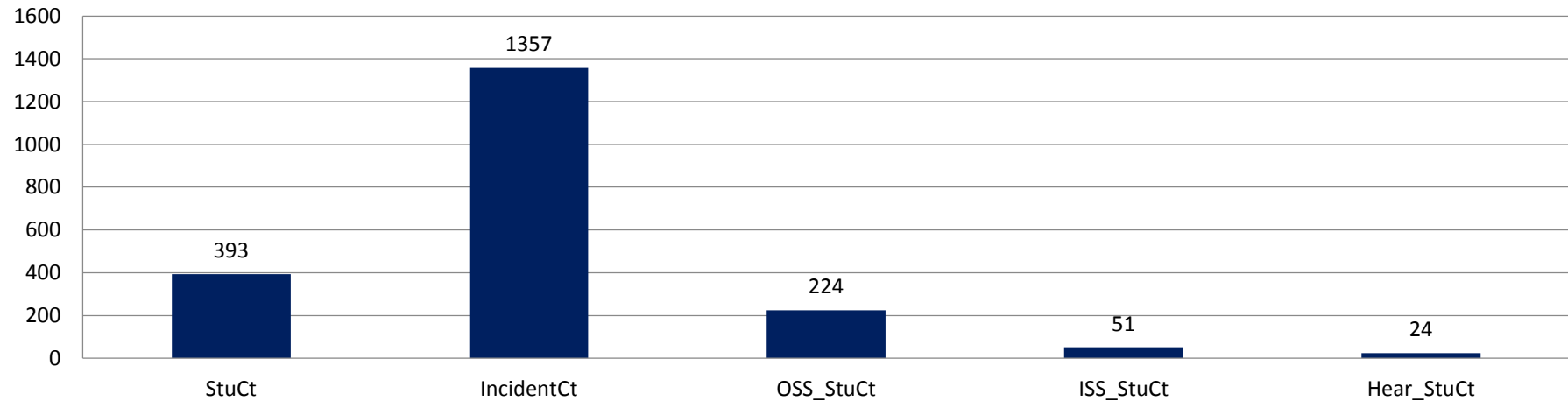
Discipline

K-6th Q2 Discipline Data 2015-2016



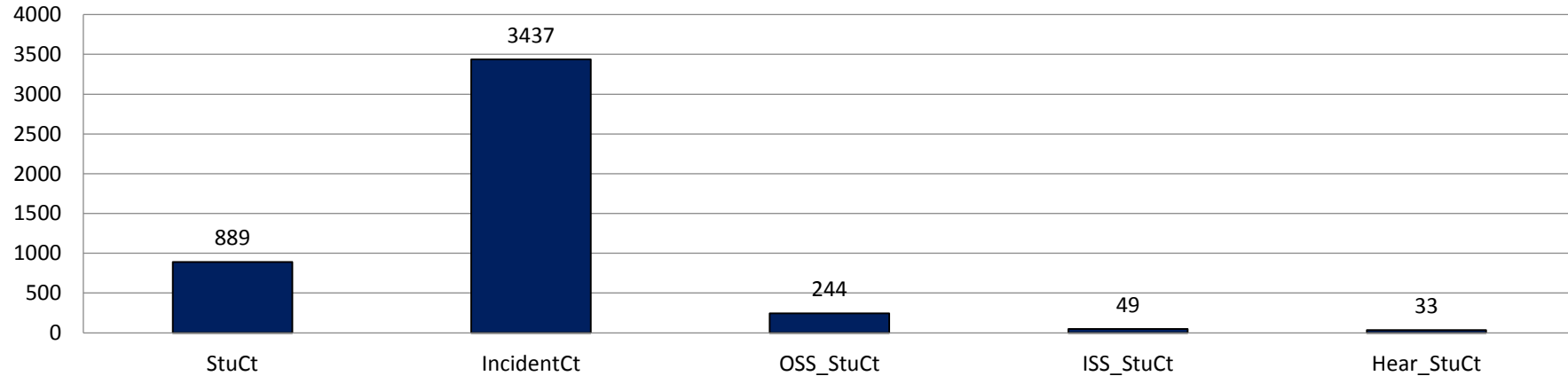
	StuCt	IncidentCt	OSS_StuCt	ISS_StuCt	Hear_StuCt
■ E All (n=401)	401	1060	130	70	9
■ E F/R (n=358)	358	943	119	60	9
■ E F/R (n=9)	9	15	2	1	0
■ E Paid (n=34)	34	102	9	9	0
■ E Asian (n=10)	10	22	0	3	0
■ E Black (n=212)	212	612	75	39	6
■ E Hispanic (n=86)	86	221	29	15	2
■ E Mixed (n=27)	27	69	11	2	0
■ E White (n=66)	66	136	15	11	1
■ E LEP (n=10)	10	31	2	3	1
■ E non-LEP (n=391)	391	1029	128	67	8
■ E IEP (n=84)	84	179	32	10	2
■ E non-IEP (n=317)	317	881	98	60	7

7-8th Q2 Discipline Data 2015-2016



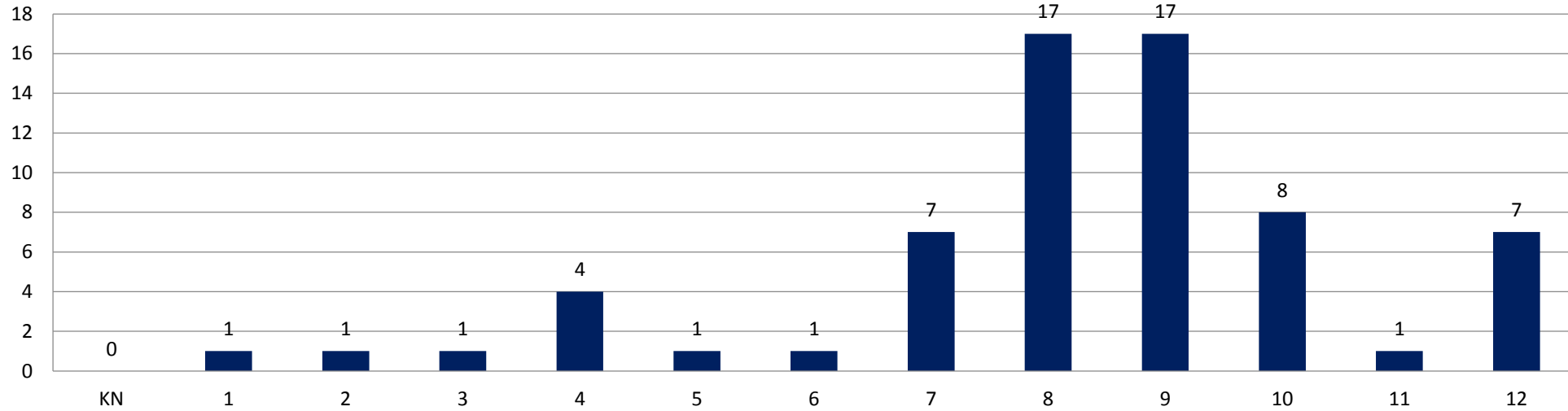
	StuCt	IncidentCt	OSS_StuCt	ISS_StuCt	Hear_StuCt
■ M All (n=393)	393	1357	224	51	24
■ M F/R (n=12)	12	34	4	1	1
■ M F/R (n=345)	345	1214	194	47	21
■ M Paid (n=36)	36	109	26	3	2
■ M Asian (n=24)	24	44	7	6	1
■ M Black (n=210)	210	808	123	27	18
■ M Hispanic (n=65)	65	199	38	10	1
■ M Mixed (n=6)	6	17	3	1	0
■ M White (n=88)	88	289	53	7	4
■ M LEP (n=12)	12	32	10	1	0
■ M non-LEP (n=381)	381	1325	214	50	24
■ M IEP (n=124)	124	466	76	20	8
■ M non-IEP (n=269)	269	891	148	31	16

9-12th Q2 Discipline Data 2015-2016



	StuCt	IncidentCt	OSS_StuCt	ISS_StuCt	Hear_StuCt
■ H All (n=889)	889	3437	244	49	33
■ H F/R (n=23)	23	61	3	0	0
■ H F/R (n=725)	725	2979	210	42	26
■ H Paid (n=141)	141	397	31	7	7
■ H Am. Indian (n=1)	1	1	0	0	0
■ H Asian (n=91)	91	211	14	5	2
■ H Black (n=439)	439	1901	139	28	20
■ H Hispanic (n=157)	157	605	44	4	7
■ H Mixed (n=13)	13	66	3	0	0
■ H White (n=188)	188	653	44	12	4
■ H LEP (n=38)	38	148	9	1	1
■ H non-LEP (n=851)	851	3289	235	48	32
■ H IEP (n=175)	175	803	61	6	8
■ H non-IEP (n=714)	714	2634	183	43	25

Superintendent Hearings By Grade Unique Student Count 2015-2016



	KN	1	2	3	4	5	6	7	8	9	10	11	12
All	0	1	1	1	4	1	1	7	17	17	8	1	7
F/R	0	1	1	1	4	1	1	7	15	14	7	0	5
Paid	0	0	0	0	0	0	0	0	2	3	1	1	2
Am. Indian					0	0		0		0	0		0
Asian	0	0	0	0	0	0	0	0	1	2	0	0	0
Black	0	1	1	0	3	1	0	6	12	9	7	0	4
Hispanic	0	0	0	1	1	0	0	0	1	4	1	1	1
Mixed	0	0	0	0	0	0	0	0	0	0	0	0	0
Pacific Is.	0		0	0	0	0			0	0			
White	0	0	0	0	0	0	1	1	3	2	0	0	2
LEP	0	0	0	0	1	0	0	0	0	0	1	0	0
non-LEP	0	1	1	1	3	1	1	7	17	17	7	1	7
IEP	0	0	0	0	1	0	1	5	3	5	2	0	1
non-IEP	0	1	1	1	3	1	0	2	14	12	6	1	6

Elementary Academics

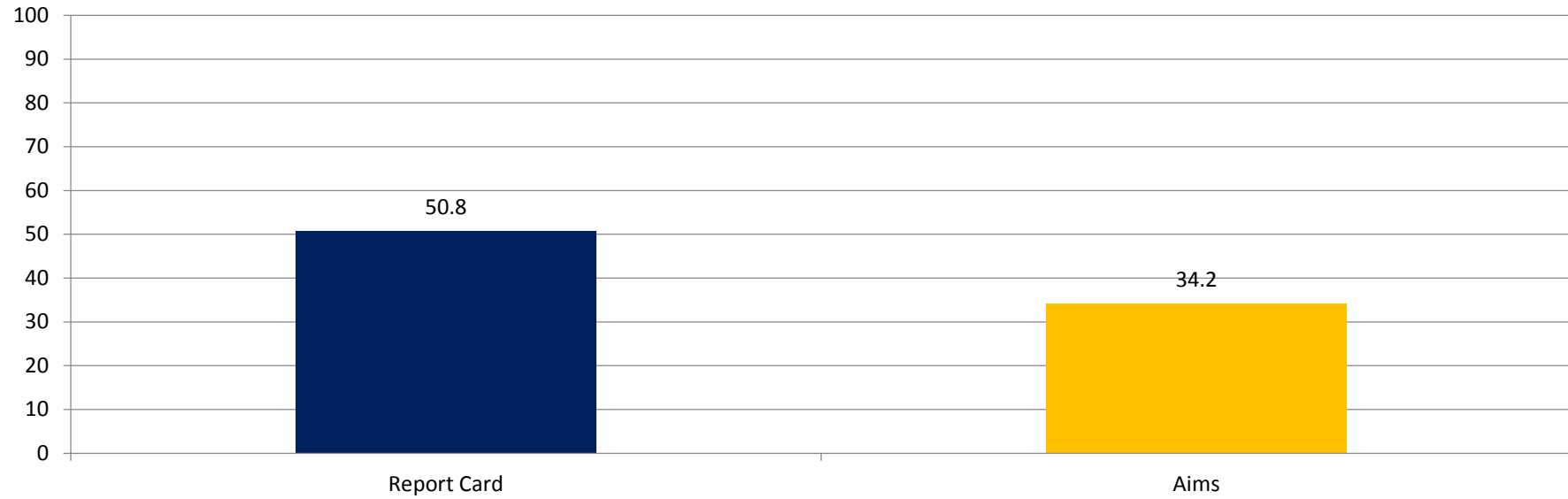
- **Percent Proficient in ELA**

Report Cards

AIMSWeb Assessment

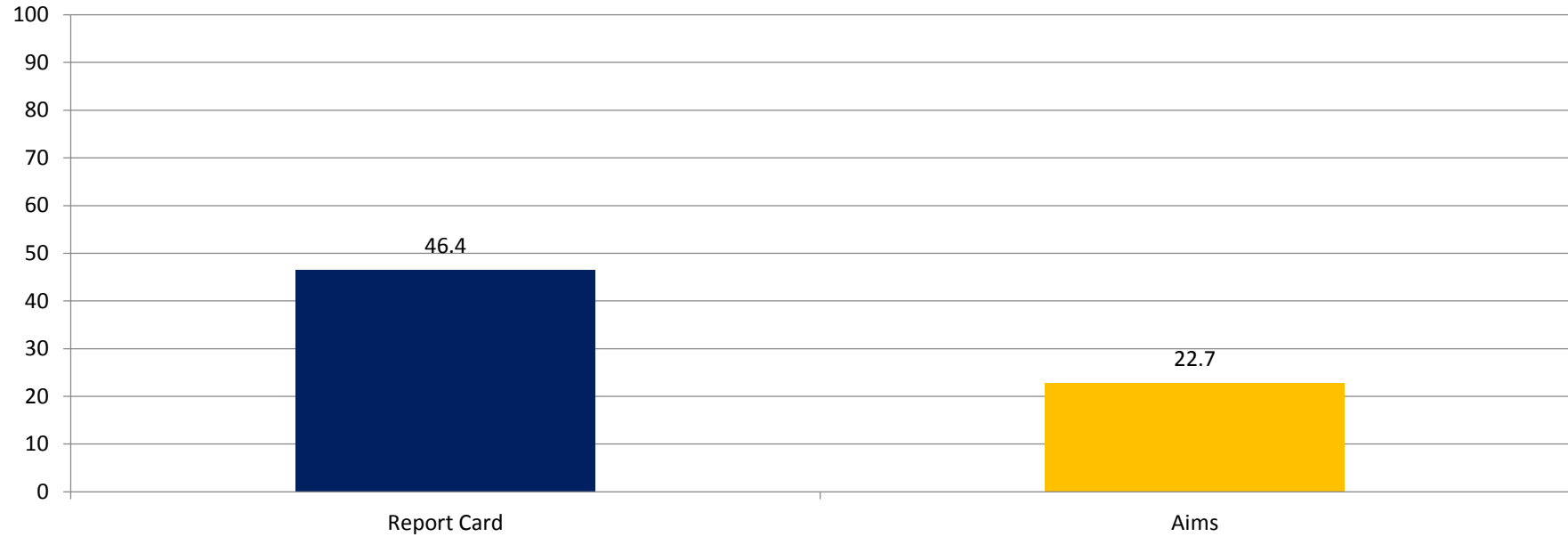
Interim Assessments

Kindergarten ELA Proficiency Q2 Academic Data 2015-2016



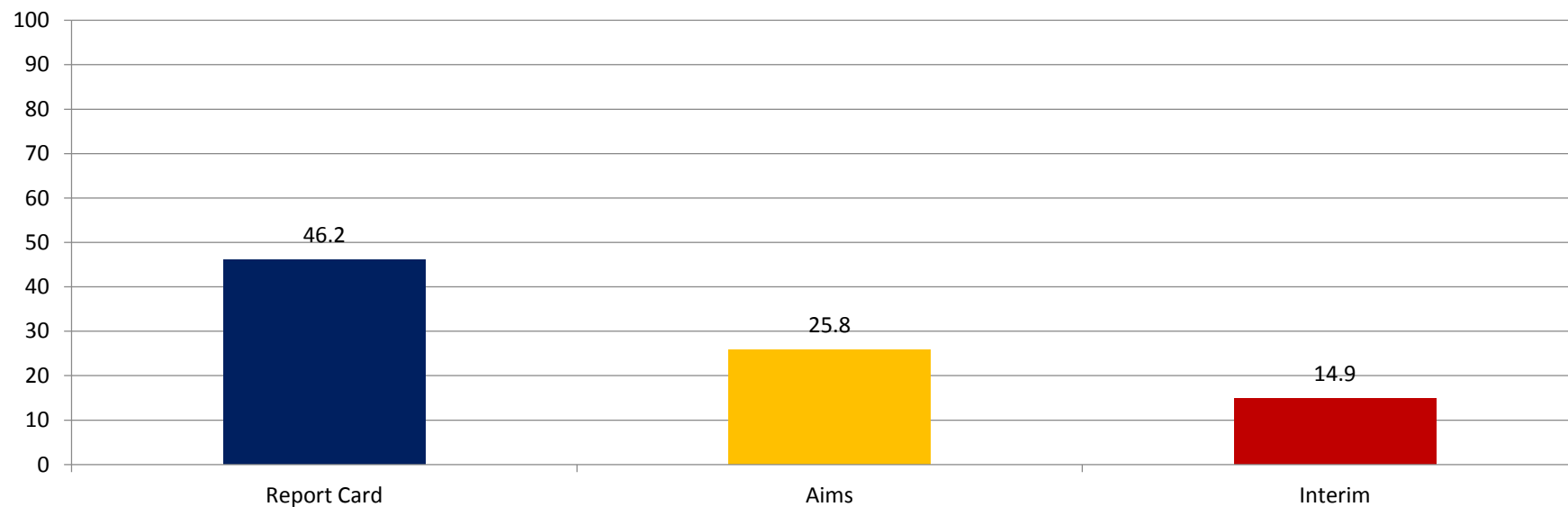
	Report Card	Aims
■ KN Pct of Students (n=775) ELA	50.8	34.2
■ KN Pct of Paid (n=208) ELA	58.7	34
■ KN Pct of F/R (n=567) ELA	48	34.3
■ KN Pct of Asian (n=100) ELA	62	42.3
■ KN Pct of Black (n=217) ELA	49.3	31
■ KN Pct of Hispanic (n=189) ELA	43.4	27.1
■ KN Pct of Mixed (n=94) ELA	51.1	40.9
■ KN Pct of Other (n=1) ELA	100	0
■ KN Pct of White (n=174) ELA	54	37.5
■ KN Pct of non-LEP (n=743) ELA	52	34.9
■ KN Pct of LEP (n=32) ELA	25	18.8
■ KN Pct of non-IEP (n=686) ELA	55.1	36.8
■ KN Pct of IEP (n=89) ELA	18	12.5

1st Grade ELA Proficiency Q2 Academic Data 2015-2016



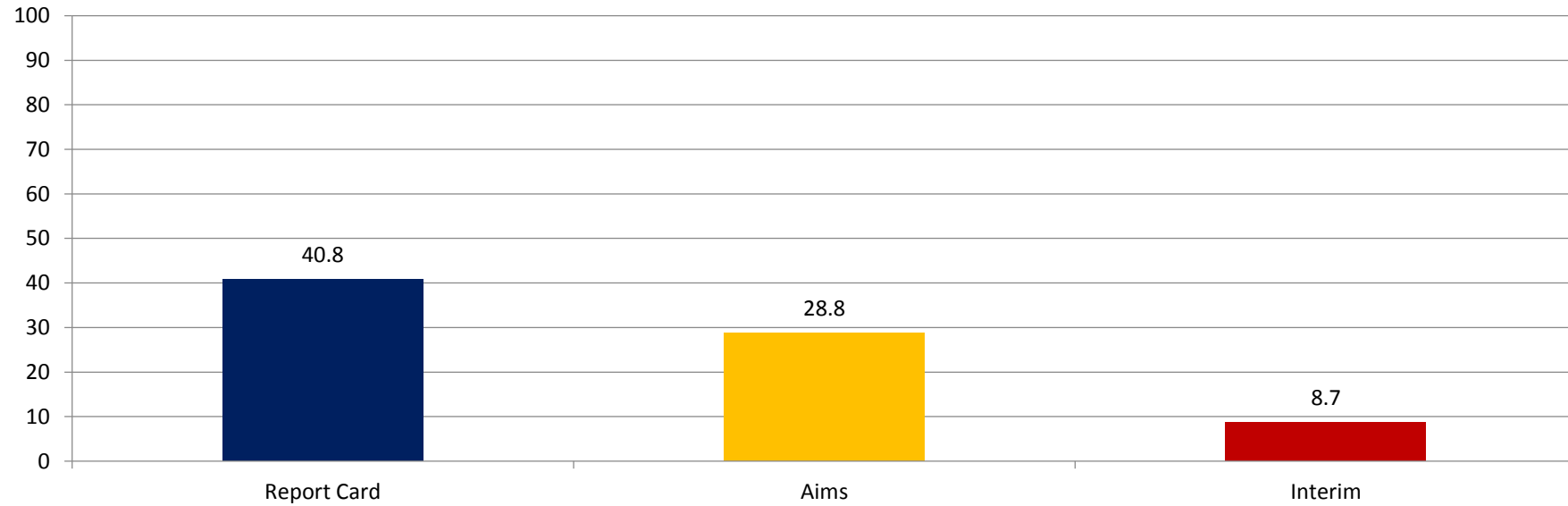
	Report Card	Aims
■ 1 Pct of Students (n=783) ELA	46.4	22.7
■ 1 Pct of Paid (n=160) ELA	56.2	30.4
■ 1 Pct of F/R (n=623) ELA	43.8	20.2
■ 1 Pct of Asian (n=103) ELA	66	27.2
■ 1 Pct of Black (n=208) ELA	38	20.5
■ 1 Pct of Hispanic (n=179) ELA	43	18.2
■ 1 Pct of Mixed (n=91) ELA	51.6	24.7
■ 1 Pct of White (n=202) ELA	45.5	25.8
■ 1 Pct of non-LEP (n=748) ELA	46.9	23.2
■ 1 Pct of LEP (n=35) ELA	34.3	11.8
■ 1 Pct of non-IEP (n=677) ELA	51.7	24.3
■ 1 Pct of IEP (n=106) ELA	12.3	11

2nd Grade ELA Proficiency Q2 Academic Data 2015-2016



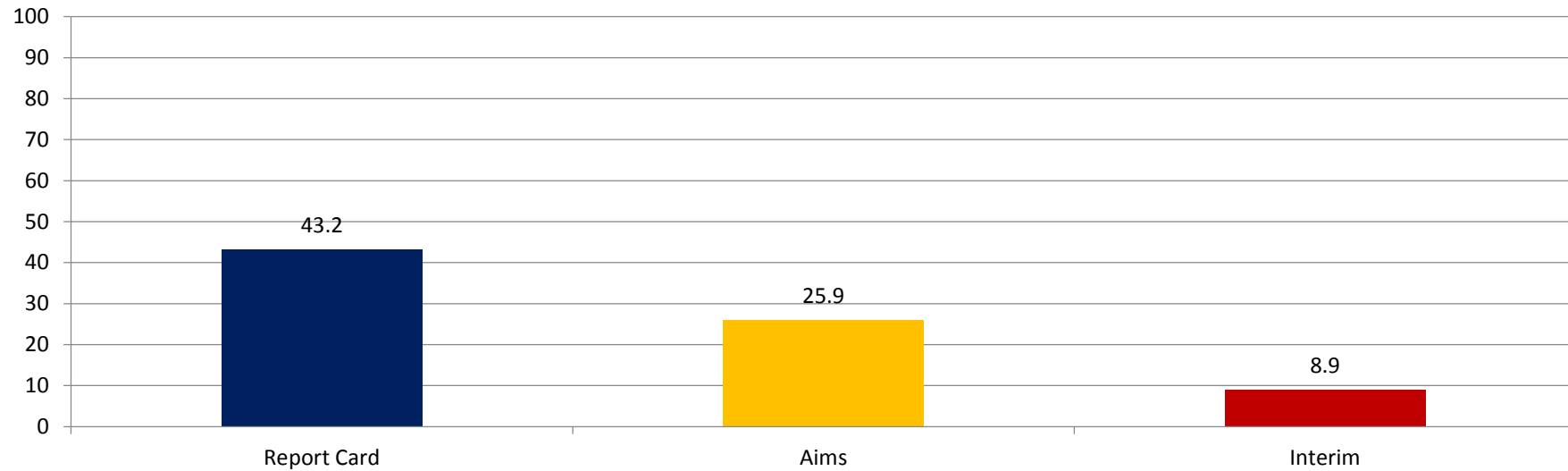
	Report Card	Aims	Interim
■ 2 Pct of Students (n=788) ELA	46.2	25.8	14.9
■ 2 Pct of Paid (n=137) ELA	59.1	35.6	26.2
■ 2 Pct of F/R (n=651) ELA	43.5	23.4	12.6
■ 2 Pct of Asian (n=113) ELA	49.6	33.6	19.1
■ 2 Pct of Black (n=195) ELA	44.1	26.5	15.8
■ 2 Pct of Hispanic (n=192) ELA	38	18.1	9.8
■ 2 Pct of Mixed (n=92) ELA	51.1	25.8	7
■ 2 Pct of Other (n=2) ELA	0	0	0
■ 2 Pct of White (n=194) ELA	52.6	28	20
■ 2 Pct of non-LEP (n=744) ELA	48.4	27.1	15.7
■ 2 Pct of LEP (n=44) ELA	9.1	2.4	0
■ 2 Pct of non-IEP (n=693) ELA	50.8	27.9	16.4
■ 2 Pct of IEP (n=95) ELA	12.6	8.2	2

3rd Grade ELA Proficiency Q2 Academic Data 2015-2016



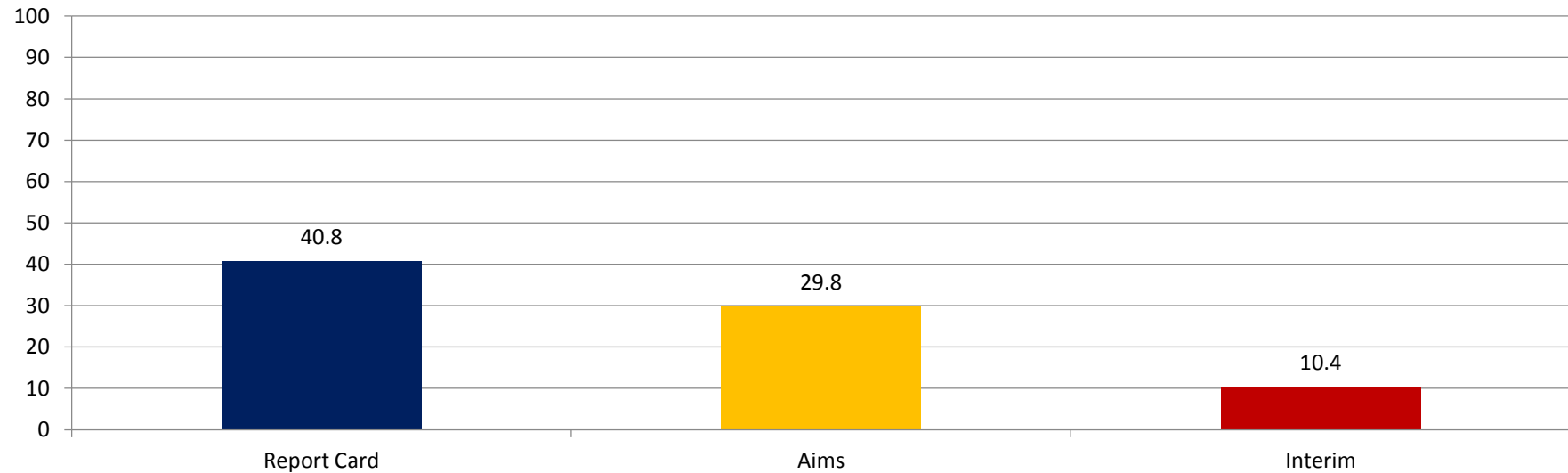
	Report Card	Aims	Interim
■ 3 Pct of Students (n=738) ELA	40.8	28.8	8.7
■ 3 Pct of Paid (n=114) ELA	64.9	41.6	16.3
■ 3 Pct of F/R (n=624) ELA	36.4	26.1	6.9
■ 3 Pct of Asian (n=116) ELA	55.2	40.4	15
■ 3 Pct of Black (n=216) ELA	30.6	20	4.5
■ 3 Pct of Hispanic (n=158) ELA	31.6	23.2	6
■ 3 Pct of Mixed (n=65) ELA	40	23	8.3
■ 3 Pct of Other (n=1) ELA	0	0	0
■ 3 Pct of White (n=182) ELA	52.2	39.2	12.1
■ 3 Pct of non-LEP (n=705) ELA	42.3	29.6	9.1
■ 3 Pct of LEP (n=33) ELA	9.1	12.1	0
■ 3 Pct of non-IEP (n=622) ELA	47.3	33.2	9.9
■ 3 Pct of IEP (n=116) ELA	6	4.6	1

4th Grade ELA Proficiency Q2 Academic Data 2015-2016



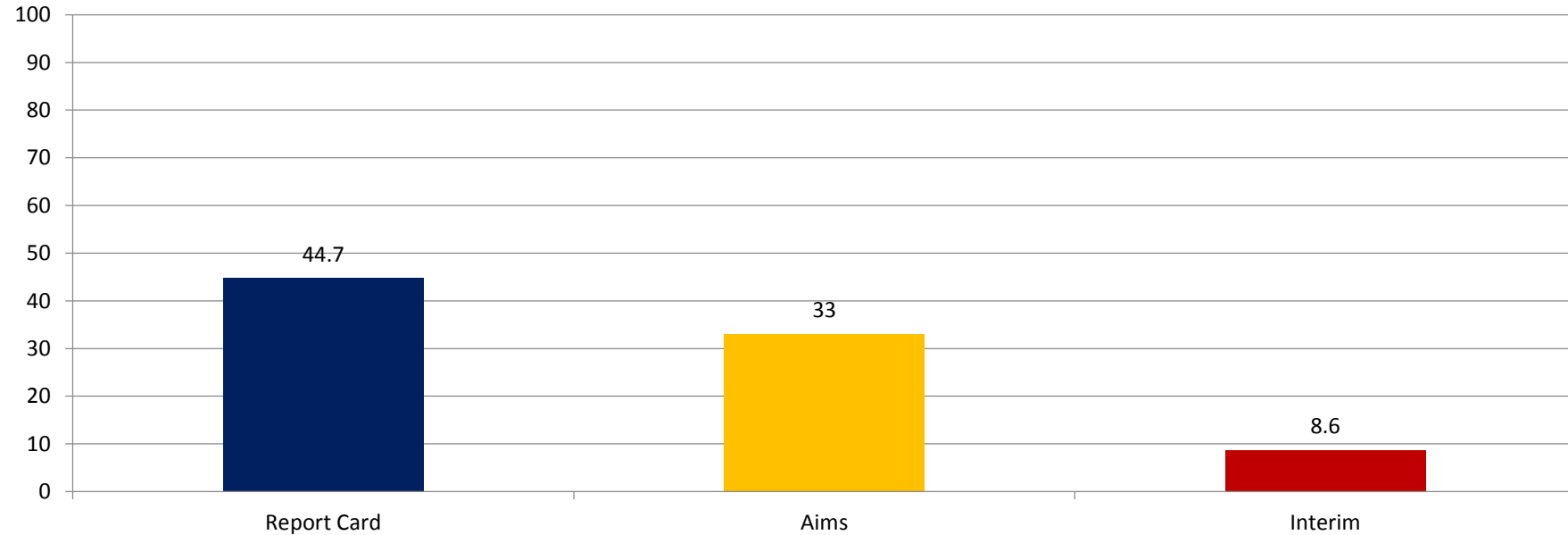
	Report Card	Aims	Interim
■ 4 Pct of Students (n=740) ELA	43.2	25.9	8.9
■ 4 Pct of Paid (n=101) ELA	65.3	47.2	20.2
■ 4 Pct of F/R (n=639) ELA	39.7	21.8	6.8
■ 4 Pct of Asian (n=118) ELA	53.4	31.4	13.1
■ 4 Pct of Black (n=241) ELA	41.5	24.9	7
■ 4 Pct of Hispanic (n=145) ELA	33.8	17.8	6.3
■ 4 Pct of Other (n=1) ELA	100	0	0
■ 4 Pct of Mixed (n=37) ELA	62.2	29	9.4
■ 4 Pct of Other (n=1) ELA	0		0
■ 4 Pct of White (n=197) ELA	42.6	29.5	10.9
■ 4 Pct of non-LEP (n=706) ELA	44.9	27	9.3
■ 4 Pct of LEP (n=34) ELA	8.8	0	0
■ 4 Pct of non-IEP (n=630) ELA	49.2	29.3	10.3
■ 4 Pct of IEP (n=110) ELA	9.1	3.4	0

5th Grade ELA Proficiency Q2 Academic Data 2015-2016



	Report Card	Aims	Interim
■ 5 Pct of Students (n=726) ELA	40.8	29.8	10.4
■ 5 Pct of Paid (n=113) ELA	59.3	42.1	21.5
■ 5 Pct of F/R (n=613) ELA	37.4	27.2	8.1
■ 5 Pct of Asian (n=119) ELA	54.6	31.4	16.9
■ 5 Pct of Black (n=257) ELA	30.7	25.6	6.9
■ 5 Pct of Hispanic (n=157) ELA	36.3	26.1	7.8
■ 5 Pct of Other (n=2) ELA	0	50	0
■ 5 Pct of Mixed (n=18) ELA	50	27.8	0
■ 5 Pct of Other (n=1) ELA	0	0	0
■ 5 Pct of White (n=172) ELA	50	38.7	14.5
■ 5 Pct of non-LEP (n=705) ELA	42	30.7	10.7
■ 5 Pct of LEP (n=21) ELA	0	0	0
■ 5 Pct of non-IEP (n=595) ELA	47.4	33.8	12.3
■ 5 Pct of IEP (n=131) ELA	10.7	10.1	0.8

6th Grade ELA Proficiency Q2 Academic Data 2015-2016



	Report Card	Aims	Interim
6 Pct of Students (n=716) ELA	44.7	33	8.6
6 Pct of Paid (n=114) ELA	64	46.3	18.1
6 Pct of F/R (n=602) ELA	41	30.1	6.5
6 Pct of Asian (n=116) ELA	56.9	37.5	16.7
6 Pct of Black (n=281) ELA	39.9	28.5	7.7
6 Pct of Hispanic (n=112) ELA	41.1	30.2	2.8
6 Pct of Mixed (n=9) ELA	44.4	33.3	0
6 Pct of White (n=198) ELA	46.5	38.8	8.8
6 Pct of non-LEP (n=695) ELA	45.3	33.7	8.9
6 Pct of LEP (n=21) ELA	23.8	10.5	0
6 Pct of non-IEP (n=548) ELA	55.5	40.4	10.9
6 Pct of IEP (n=168) ELA	9.5	6.8	0.7

Elementary Academics

- **Percent Proficient in Math**

Report Cards

AIMSWeb Assessment

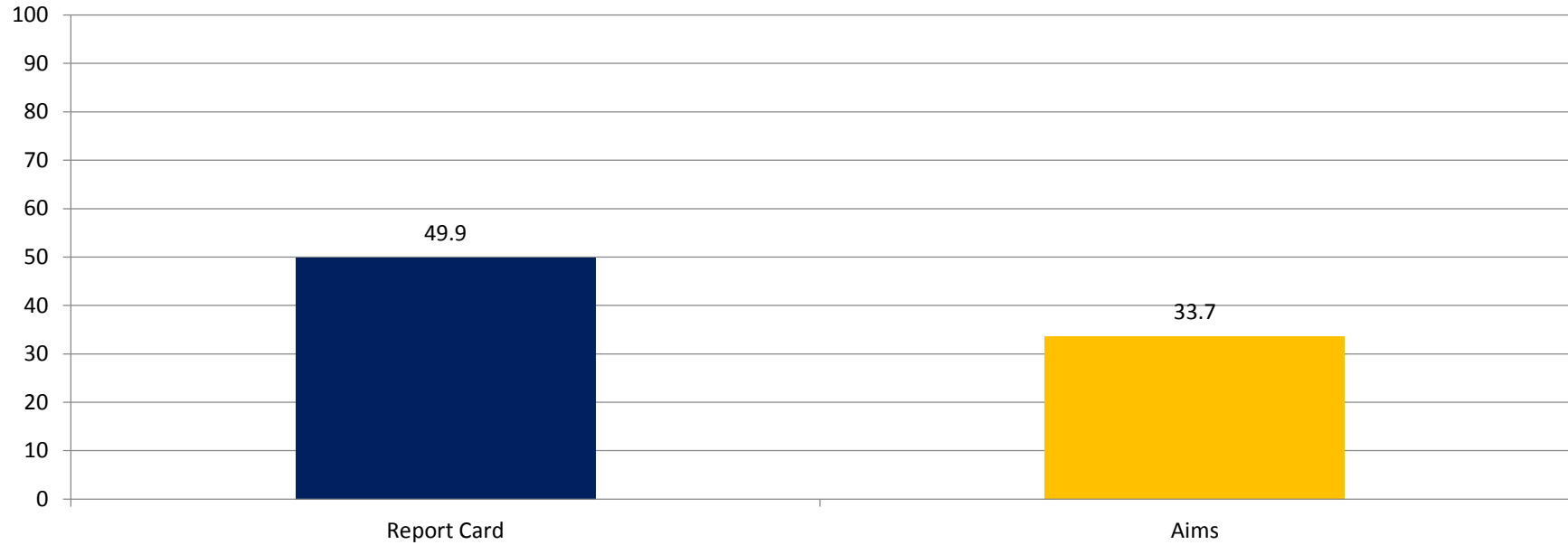
Interim Assessments

Kindergarten Math Proficiency Q2 Academic Data 2015-2016



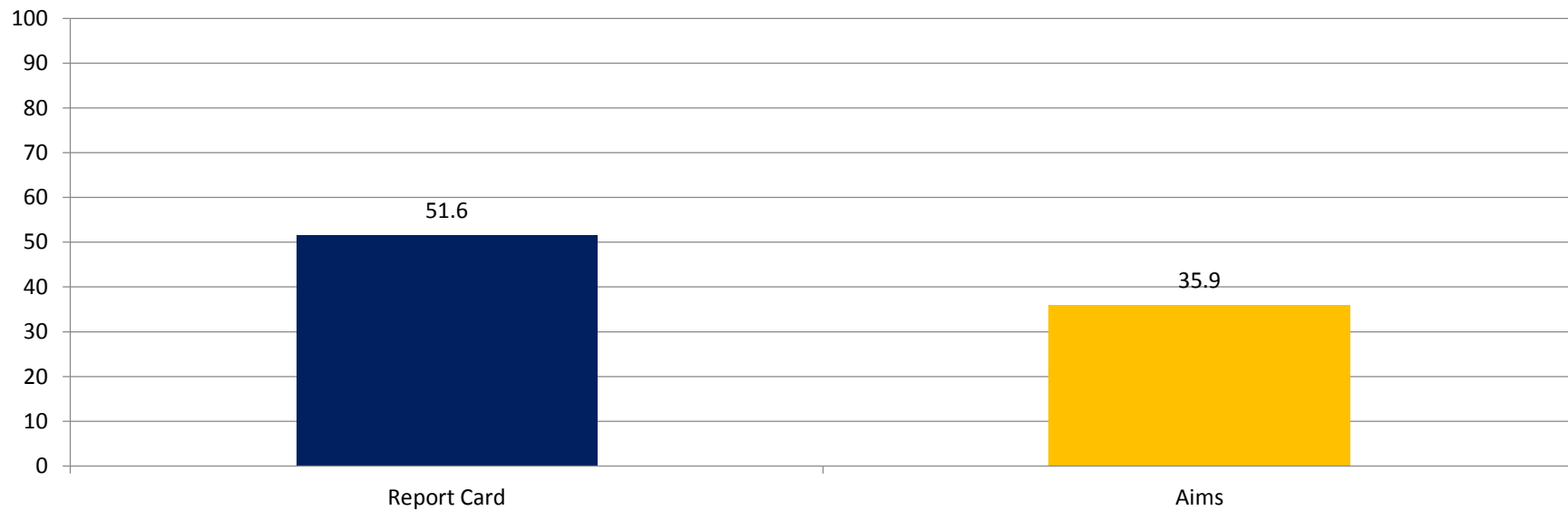
	Report Card	Aims
■ KN Pct of Students (n=775) MATH	57	27.1
■ KN Pct of Paid (n=208) MATH	66.3	25.7
■ KN Pct of F/R (n=567) MATH	53.6	27.9
■ KN Pct of Asian (n=100) MATH	71	33.7
■ KN Pct of Black (n=217) MATH	53.5	26.1
■ KN Pct of Hispanic (n=189) MATH	50.3	21
■ KN Pct of Mixed (n=93) MATH	57	26.7
■ KN Pct of Other (n=1) MATH	0	0
■ KN Pct of White (n=175) MATH	61.1	31.5
■ KN Pct of non-LEP (n=742) MATH	58.1	27.4
■ KN Pct of LEP (n=33) MATH	33.3	19.4
■ KN Pct of non-IEP (n=686) MATH	61.4	29
■ KN Pct of IEP (n=89) MATH	23.6	11.4

1st Grade Math Proficiency Q2 Academic Data 2015-2016



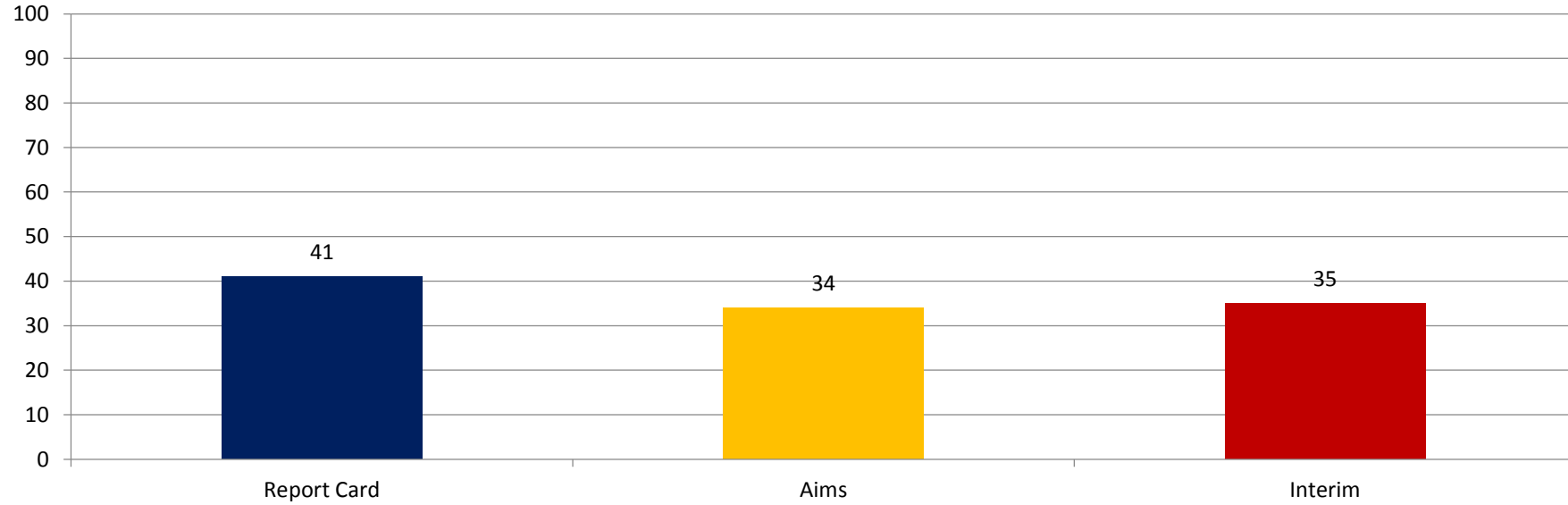
	Report Card	Aims
■ 1 Pct of Students (n=781) MATH	49.9	33.7
■ 1 Pct of Paid (n=159) MATH	59.1	38.8
■ 1 Pct of F/R (n=622) MATH	47.6	32
■ 1 Pct of Asian (n=103) MATH	53.4	39.1
■ 1 Pct of Black (n=207) MATH	42	28.8
■ 1 Pct of Hispanic (n=178) MATH	47.2	35.9
■ 1 Pct of Mixed (n=91) MATH	52.7	43.5
■ 1 Pct of White (n=202) MATH	57.4	29.5
■ 1 Pct of non-LEP (n=746) MATH	50.4	34.6
■ 1 Pct of LEP (n=35) MATH	40	14.7
■ 1 Pct of non-IEP (n=676) MATH	54.1	37.1
■ 1 Pct of IEP (n=105) MATH	22.9	10.6

2nd Grade Math Proficiency Q2 Academic Data 2015-2016



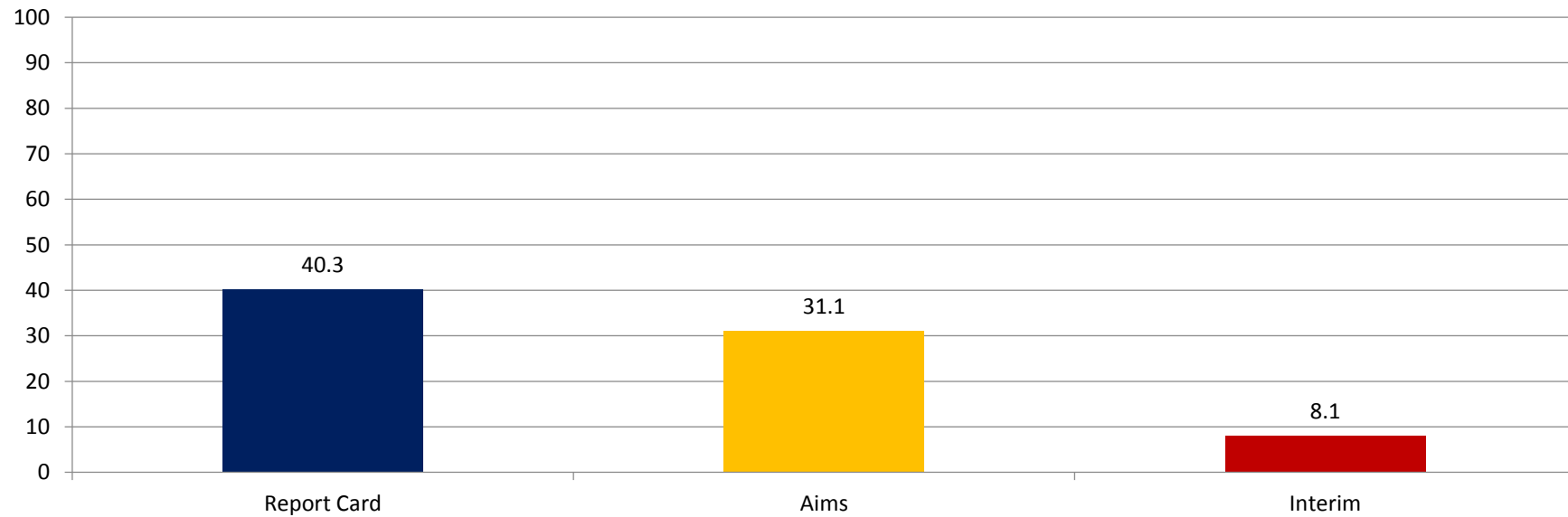
	Report Card	Aims
■ 2 Pct of Students (n=764) MATH	51.6	35.9
■ 2 Pct of Paid (n=135) MATH	69.6	49.6
■ 2 Pct of F/R (n=629) MATH	47.7	32.7
■ 2 Pct of Asian (n=108) MATH	60.2	40.4
■ 2 Pct of Black (n=190) MATH	46.3	29.7
■ 2 Pct of Hispanic (n=189) MATH	43.4	26.5
■ 2 Pct of Mixed (n=89) MATH	58.4	38.5
■ 2 Pct of Other (n=2) MATH	0	50
■ 2 Pct of White (n=186) MATH	57.5	46.7
■ 2 Pct of non-LEP (n=720) MATH	53.1	36.6
■ 2 Pct of LEP (n=44) MATH	27.3	23.7
■ 2 Pct of non-IEP (n=670) MATH	56.6	39
■ 2 Pct of IEP (n=94) MATH	16	12.5

3rd Grade Math Proficiency Q2 Academic Data 2015-2016



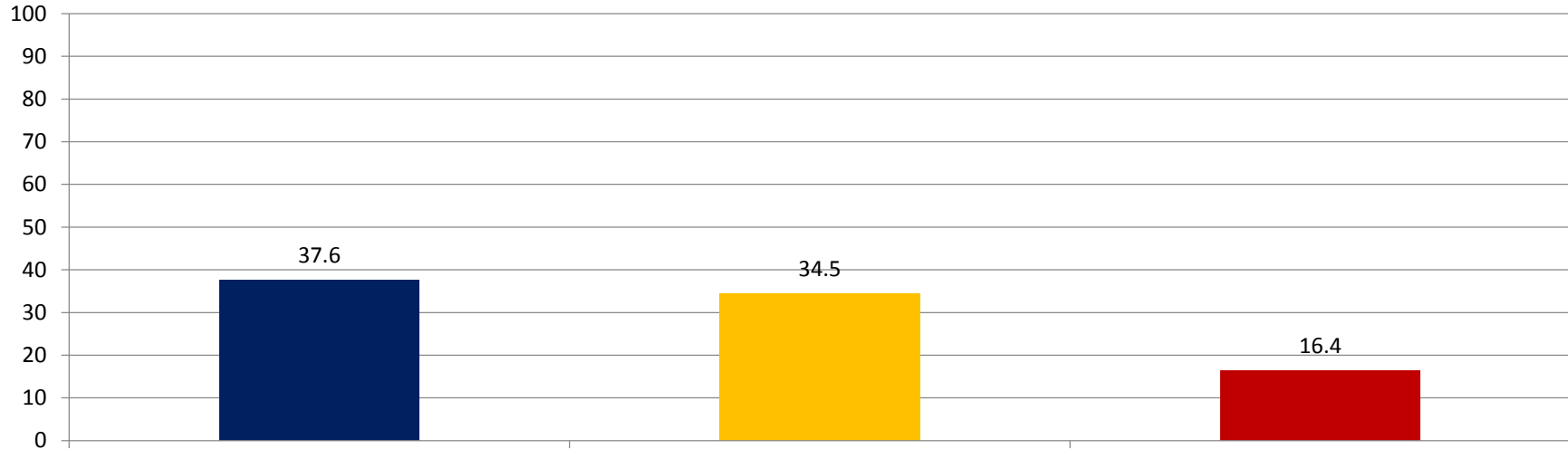
	Report Card	Aims	Interim
■ 3 Pct of Students (n=717) MATH	41	34	35
■ 3 Pct of Paid (n=105) MATH	67.6	51.2	57.9
■ 3 Pct of F/R (n=612) MATH	36.4	30.2	29.9
■ 3 Pct of Asian (n=115) MATH	56.5	42.1	49.1
■ 3 Pct of Black (n=214) MATH	31.8	25.2	21.8
■ 3 Pct of Hispanic (n=158) MATH	30.4	24	25.2
■ 3 Pct of Mixed (n=62) MATH	40.3	44.1	32.8
■ 3 Pct of Other (n=1) MATH	0	0	0
■ 3 Pct of White (n=167) MATH	52.7	44.5	50.9
■ 3 Pct of non-LEP (n=684) MATH	42.1	35.1	35.7
■ 3 Pct of LEP (n=33) MATH	18.2	9.7	18.8
■ 3 Pct of non-IEP (n=608) MATH	47.2	39	38.9
■ 3 Pct of IEP (n=109) MATH	6.4	5.7	11.2

4th Grade Math Proficiency Q2 Academic Data 2015-2016



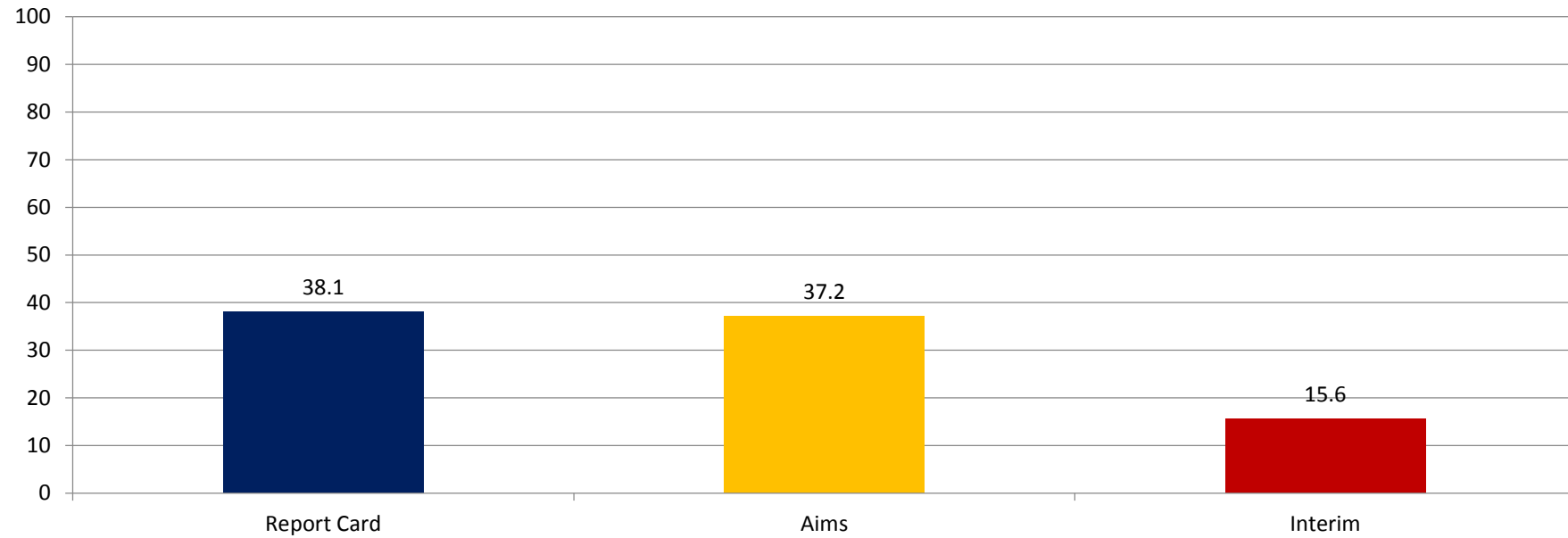
	Report Card	Aims	Interim
■ 4 Pct of Students (n=734) MATH	40.3	31.1	8.1
■ 4 Pct of Paid (n=101) MATH	61.4	51.4	15.5
■ 4 Pct of F/R (n=633) MATH	37	27.1	6.7
■ 4 Pct of Asian (n=118) MATH	52.5	38.8	14.7
■ 4 Pct of Black (n=239) MATH	32.2	26.5	5.2
■ 4 Pct of Hispanic (n=144) MATH	36.8	26.1	3.6
■ 4 Pct of Other (n=1) MATH	100	100	0
■ 4 Pct of Mixed (n=35) MATH	42.9	25.9	6.5
■ 4 Pct of Other (n=1) MATH	0		
■ 4 Pct of White (n=196) MATH	44.9	36.1	11.6
■ 4 Pct of non-LEP (n=700) MATH	42.1	32.3	8.5
■ 4 Pct of LEP (n=34) MATH	2.9	3.6	0
■ 4 Pct of non-IEP (n=630) MATH	46	35.5	9.2
■ 4 Pct of IEP (n=104) MATH	5.8	2.3	1.1

5th Grade Math Proficiency Q2 Academic Data 2015-2016



	Report Card	Aims	Interim
■ 5 Pct of Students (n=726) MATH	37.6	34.5	16.4
■ 5 Pct of Paid (n=113) MATH	54.9	50	32.5
■ 5 Pct of F/R (n=613) MATH	34.4	31.4	12.9
■ 5 Pct of Asian (n=119) MATH	57.1	47.9	23.9
■ 5 Pct of Black (n=257) MATH	27.6	27.5	10.8
■ 5 Pct of Hispanic (n=157) MATH	31.2	30.9	10.1
■ 5 Pct of Other (n=2) MATH	50	0	0
■ 5 Pct of Mixed (n=18) MATH	50	22.2	23.5
■ 5 Pct of Other (n=1) MATH	0	0	0
■ 5 Pct of White (n=172) MATH	43.6	40.9	24.5
■ 5 Pct of non-LEP (n=705) MATH	38.7	35.4	16.9
■ 5 Pct of LEP (n=21) MATH	0	5	0
■ 5 Pct of non-IEP (n=595) MATH	43.2	39.5	18.9

6th Grade Proficiency Q2 Academic Data 2015-2016

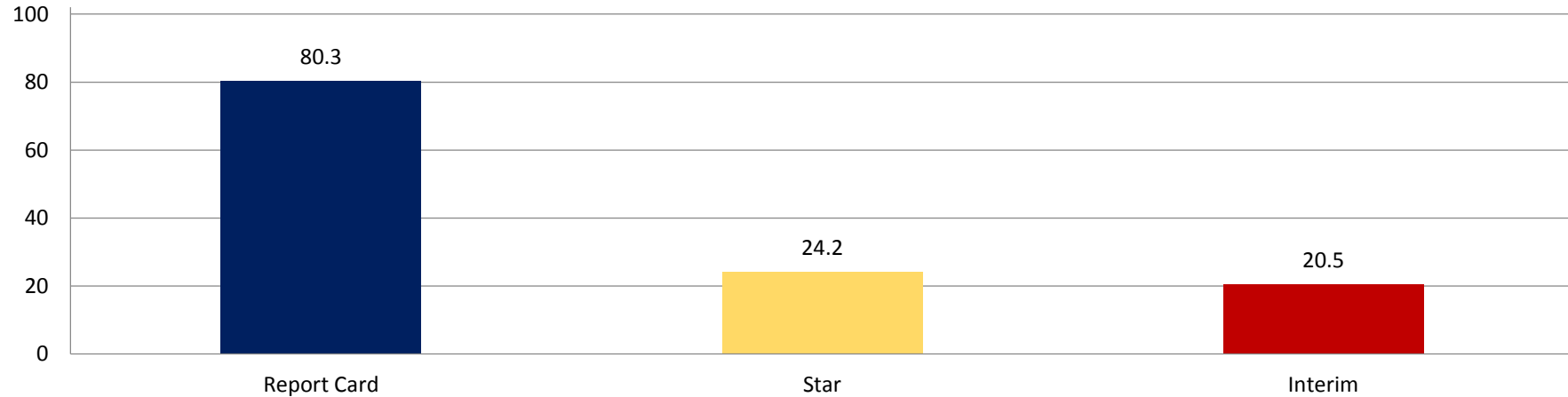


	Report Card	Aims	Interim
6 Pct of Students (n=716) MATH	38.1	37.2	15.6
6 Pct of Paid (n=115) MATH	55.7	53.5	30.1
6 Pct of F/R (n=601) MATH	34.8	33.5	12.1
6 Pct of Asian (n=116) MATH	48.3	50	21.9
6 Pct of Black (n=281) MATH	34.5	30.2	10.8
6 Pct of Hispanic (n=112) MATH	35.7	29.5	11.9
6 Pct of Mixed (n=9) MATH	44.4	62.5	22.2
6 Pct of White (n=198) MATH	38.4	43.1	20.5
6 Pct of non-LEP (n=695) MATH	38.3	38.3	15.9
6 Pct of LEP (n=21) MATH	33.3	0	5
6 Pct of non-IEP (n=549) MATH	45	44.9	19.5
6 Pct of IEP (n=167) MATH	15.6	9.6	2

Middle School Academics

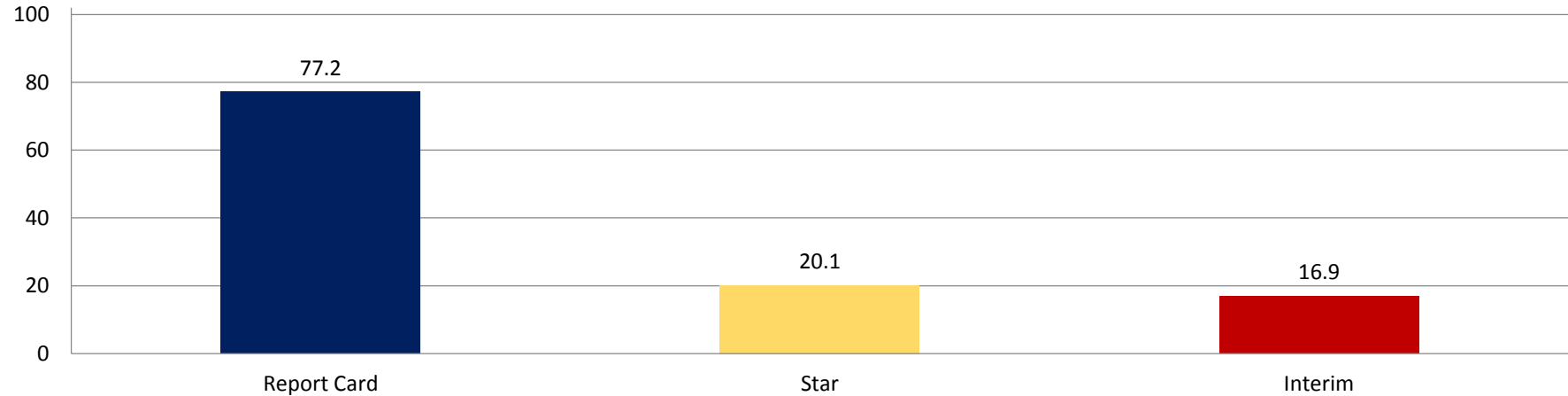
- **Percent Passing in ELA**
 - Report Cards
 - Star Data
 - Interims

7th Grade ELA Proficiency Q2 Academic Data 2015-2016



	Report Card	Star	Interim
■ 7 Pct of Students (n=783) ELA	80.3	24.2	20.5
■ 7 Pct of Paid (n=124) ELA	92.7	30.1	40
■ 7 Pct of F/R (n=659) ELA	78	22.8	16.7
■ 7 Pct of Asian (n=162) ELA	90.7	32.5	22.2
■ 7 Pct of Black (n=273) ELA	73.6	14.3	12.3
■ 7 Pct of Hispanic (n=125) ELA	79.2	20	17.4
■ 7 Pct of Other (n=1) ELA	100	0	0
■ 7 Pct of Mixed (n=9) ELA	44.4	60	50
■ 7 Pct of White (n=213) ELA	83.1	31.6	29.7
■ 7 Pct of non-LEP (n=765) ELA	80	24.9	21.1
■ 7 Pct of LEP (n=18) ELA	94.4	0	0
■ 7 Pct of non-IEP (n=663) ELA	81.3	28.6	24.9
■ 7 Pct of IEP (n=120) ELA	75	4	3.8

8th Grade ELA Proficiency Q2 Academic Data 2015-2016



	Report Card	Star	Interim
■ 8 Pct of Students (n=755) ELA	77.2	20.1	16.9
■ 8 Pct of Paid (n=117) ELA	88	28.4	25.7
■ 8 Pct of F/R (n=638) ELA	75.2	18.3	15.1
■ 8 Pct of Asian (n=147) ELA	86.4	26.1	22.4
■ 8 Pct of Black (n=282) ELA	67.4	13.3	10.2
■ 8 Pct of Hispanic (n=122) ELA	74.6	20.7	14.6
■ 8 Pct of Mixed (n=5) ELA	80	33.3	0
■ 8 Pct of White (n=199) ELA	85.9	24.4	24.5
■ 8 Pct of non-LEP (n=739) ELA	77.7	20.3	17.4
■ 8 Pct of LEP (n=16) ELA	56.2	14.3	0
■ 8 Pct of non-IEP (n=622) ELA	78.5	24.2	20.8
■ 8 Pct of IEP (n=133) ELA	71.4	1.1	0

Middle School Academics

- **Percent Passing in Math**
- **Report Cards**
Interims
- **Star Data – Not Available**

7th Grade Math Proficiency Q2 Academic Data 2015-2016



	Report Card	Interim
■ 7 Pct of Students (n=877) MATH	75.1	22.4
■ 7 Pct of Paid (n=133) MATH	87.2	24.7
■ 7 Pct of F/R (n=744) MATH	73	21.6
■ 7 Pct of Asian (n=186) MATH	85.5	31.7
■ 7 Pct of Black (n=298) MATH	65.8	10.9
■ 7 Pct of Hispanic (n=150) MATH	76.7	20.3
■ 7 Pct of Other (n=1) MATH	100	0
■ 7 Pct of Mixed (n=8) MATH	75	0
■ 7 Pct of White (n=234) MATH	77.8	29.4
■ 7 Pct of non-LEP (n=846) MATH	74.8	23
■ 7 Pct of LEP (n=31) MATH	83.9	0
■ 7 Pct of non-IEP (n=750) MATH	75.1	24.5
■ 7 Pct of IEP (n=127) MATH	75.6	4.4

8th Grade Math Proficiency Q2 Academic Data 2015-2016



	Report Card	Interim
■ 8 Pct of Students (n=744) MATH	74.6	20.8
■ 8 Pct of Paid (n=116) MATH	85.3	31.5
■ 8 Pct of F/R (n=628) MATH	72.6	17.7
■ 8 Pct of Asian (n=150) MATH	85.3	26.5
■ 8 Pct of Black (n=270) MATH	67.4	12.5
■ 8 Pct of Hispanic (n=123) MATH	71.5	16.7
■ 8 Pct of Mixed (n=4) MATH	50	0
■ 8 Pct of Other (n=1) MATH	100	0
■ 8 Pct of White (n=196) MATH	78.6	28.8
■ 8 Pct of non-LEP (n=718) MATH	74.7	21.6
■ 8 Pct of LEP (n=26) MATH	73.1	0
■ 8 Pct of non-IEP (n=635) MATH	76.4	23.3
■ 8 Pct of IEP (n=109) MATH	64.2	6.7

Middle School Academics

- **Percent Passing in Science and Social Studies by Grade Level**

Report Cards

Science Percent Passing by Grade Q2 Academic Data 2015-2016



Pct of Students	83.6	73.8
Pct of Paid	95.3	81
Pct of F/R	81.6	72.6
Pct of Asian	95.7	87.4
Pct of Black	78.6	66.5
Pct of Hispanic	81.9	70.8
Pct of Other	100	100
Pct of Mixed	85.7	75
Pct of White	82.2	76
Pct of non-LEP	83.5	73.8
Pct of LEP	86.4	73.7
Pct of non-IEP	85.5	75.9
Pct of IEP	74.3	63.2

Social Studies Percent Passing by Grade Q2 Academic Data 2015-2016

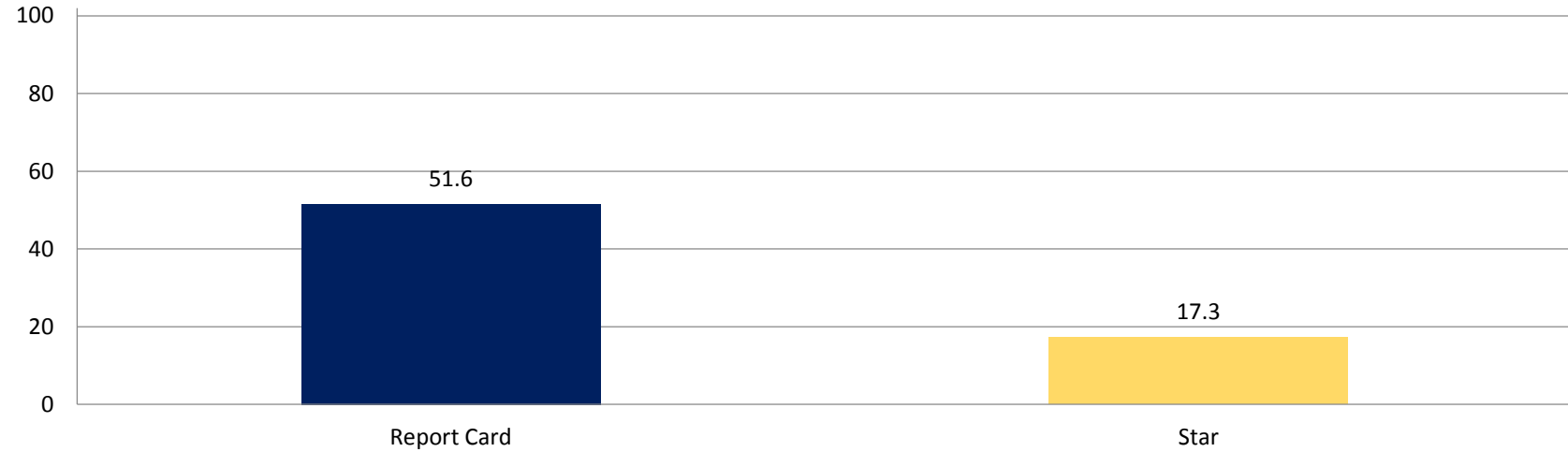


	7	8
Pct of Students	82.4	77.9
Pct of Paid	90.8	88.1
Pct of F/R	80.9	75.9
Pct of Asian	88.4	89.8
Pct of Black	77.5	70.1
Pct of Hispanic	81.1	67.7
Pct of Other	100	100
Pct of Mixed	75	75
Pct of White	85.5	86.1
Pct of non-LEP	82.4	77.9
Pct of LEP	85	77.8
Pct of non-IEP	82.8	80
Pct of IEP	80.4	67

High School Academics

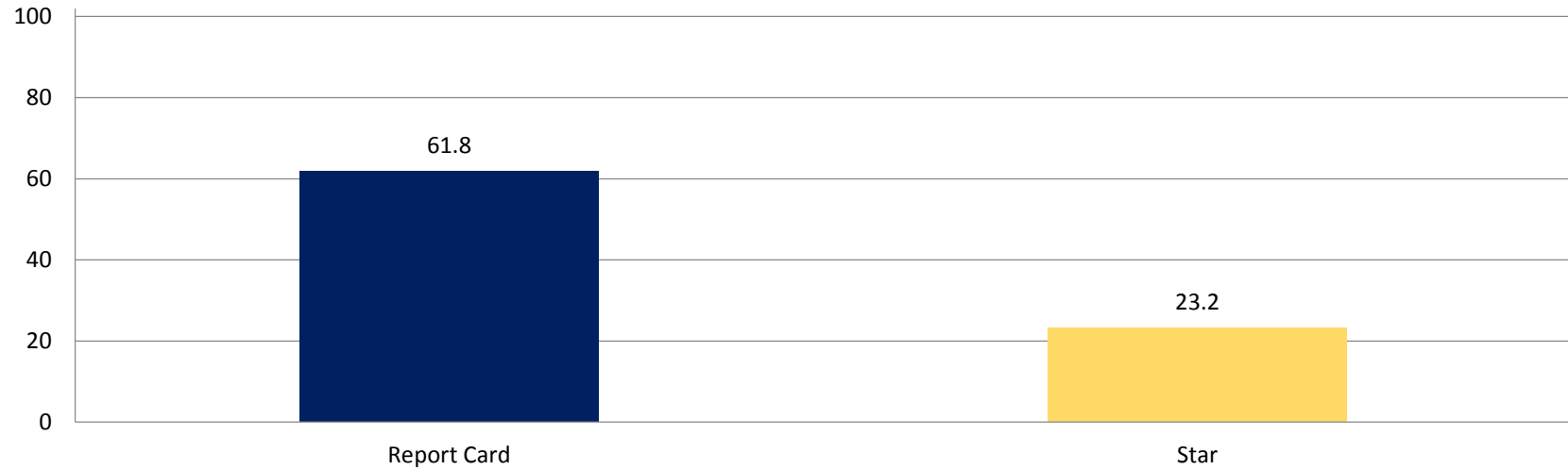
- **Percent Passing in ELA**
 - Report Cards
 - Star Data
 - Interims – Not Available

9th Grade ELA Percent Passing Q2 Academic Data 2015-2016



	Report Card	Star
■ 9 Pct of Students (n=1105) ELA	51.6	17.3
■ 9 Pct of Paid (n=176) ELA	60.2	31.7
■ 9 Pct of F/R (n=929) ELA	49.9	14.5
■ 9 Pct of Asian (n=184) ELA	64.7	17.5
■ 9 Pct of Black (n=442) ELA	45.9	13.7
■ 9 Pct of Hispanic (n=196) ELA	49.5	13.6
■ 9 Pct of Other (n=2) ELA	50	0
■ 9 Pct of Mixed (n=13) ELA	38.5	25
■ 9 Pct of Other (n=1) ELA	100	
■ 9 Pct of White (n=267) ELA	53.9	25.1
■ 9 Pct of non-LEP (n=1071) ELA	51.7	17.9
■ 9 Pct of LEP (n=34) ELA	47.1	0
■ 9 Pct of non-IEP (n=866) ELA	53.8	20.8
■ 9 Pct of IEP (n=239) ELA	43.5	1.5

10th Grade ELA Percent Passing Q2 Academic Data 2015-2016



	Report Card	Star
■ 10 Pct of Students (n=718) ELA	61.8	23.2
■ 10 Pct of Paid (n=177) ELA	71.2	38.1
■ 10 Pct of F/R (n=541) ELA	58.8	17.9
■ 10 Pct of Asian (n=173) ELA	77.5	23.1
■ 10 Pct of Black (n=217) ELA	47.5	17.4
■ 10 Pct of Hispanic (n=113) ELA	51.3	8.3
■ 10 Pct of Other (n=1) ELA	100	0
■ 10 Pct of Mixed (n=8) ELA	25	14.3
■ 10 Pct of White (n=206) ELA	70.9	36.2
■ 10 Pct of non-LEP (n=681) ELA	63	24.3
■ 10 Pct of LEP (n=37) ELA	40.5	0
■ 10 Pct of non-IEP (n=609) ELA	61.4	26.8
■ 10 Pct of IEP (n=109) ELA	64.2	0

11th Grade ELA Percent Passing Q2 Academic Data 2015-2016



■ 11 Pct of Students (n=529) ELA	74.5	26.1
■ 11 Pct of Paid (n=122) ELA	75.4	37.5
■ 11 Pct of F/R (n=407) ELA	74.2	22.6
■ 11 Pct of Asian (n=126) ELA	89.7	29.5
■ 11 Pct of Black (n=187) ELA	63.6	22
■ 11 Pct of Hispanic (n=67) ELA	68.7	14.3
■ 11 Pct of Mixed (n=3) ELA	66.7	50
■ 11 Pct of White (n=146) ELA	78.1	33.1
■ 11 Pct of non-LEP (n=518) ELA	74.7	26.7
■ 11 Pct of LEP (n=11) ELA	63.6	0
■ 11 Pct of non-IEP (n=448) ELA	75.4	29.2
■ 11 Pct of IEP (n=81) ELA	69.1	5.3

12th Grade ELA Percent Passing Q2 Academic Data 2015-2016



	Report Card	Star
■ 12 Pct of Students (n=655) ELA	81.5	18.3
■ 12 Pct of Paid (n=157) ELA	91.1	27.8
■ 12 Pct of F/R (n=498) ELA	78.5	15.4
■ 12 Pct of Asian (n=145) ELA	85.5	10.5
■ 12 Pct of Black (n=191) ELA	74.3	19.8
■ 12 Pct of Hispanic (n=94) ELA	76.6	4.5
■ 12 Pct of Other (n=2) ELA	100	50
■ 12 Pct of Mixed (n=10) ELA	80	50
■ 12 Pct of White (n=213) ELA	87.3	25.6
■ 12 Pct of non-LEP (n=646) ELA	81.4	18.8
■ 12 Pct of LEP (n=9) ELA	88.9	0
■ 12 Pct of non-IEP (n=582) ELA	82.8	22
■ 12 Pct of IEP (n=73) ELA	71.2	0

High School Academics

- **Percent Passing in Math**
- **Report Cards**
Interims
- **Star Data – Not Available**

9th Grade Math Percent Passing Q2 Academic Data 2015-2016



	Report Card	Interim
■ 9 Pct of Students (n=823) MATH	51.2	10.2
■ 9 Pct of Paid (n=135) MATH	65.9	10.8
■ 9 Pct of F/R (n=688) MATH	48.3	10.1
■ 9 Pct of Asian (n=139) MATH	66.9	17
■ 9 Pct of Black (n=318) MATH	42.5	8.1
■ 9 Pct of Hispanic (n=144) MATH	46.5	3.5
■ 9 Pct of Other (n=2) MATH	50	0
■ 9 Pct of Mixed (n=10) MATH	50	0
■ 9 Pct of Other (n=1) MATH	0	0
■ 9 Pct of White (n=209) MATH	57.4	12.7
■ 9 Pct of non-LEP (n=793) MATH	52.2	10.6
■ 9 Pct of LEP (n=30) MATH	23.3	0
■ 9 Pct of non-IEP (n=665) MATH	55.5	11.6
■ 9 Pct of IEP (n=158) MATH	32.9	0

10th Grade Math Percent Passing Q2 Academic Data 2015-2016



	Report Card	Interim
■ 10 Pct of Students (n=615) MATH	64.2	39.9
■ 10 Pct of Paid (n=148) MATH	70.3	36.4
■ 10 Pct of F/R (n=467) MATH	62.3	40.8
■ 10 Pct of Asian (n=148) MATH	76.4	42.1
■ 10 Pct of Black (n=193) MATH	54.9	37.5
■ 10 Pct of Hispanic (n=92) MATH	52.2	30
■ 10 Pct of Other (n=1) MATH	100	0
■ 10 Pct of Mixed (n=10) MATH	60	33.3
■ 10 Pct of White (n=171) MATH	70.8	47.5
■ 10 Pct of non-LEP (n=590) MATH	65.4	40.4
■ 10 Pct of LEP (n=25) MATH	36	0
■ 10 Pct of non-IEP (n=535) MATH	63.6	40.7
■ 10 Pct of IEP (n=80) MATH	68.8	25

11th Grade Math Percent Passing Q2 Academic Data 2015-2016



■ 11 Pct of Students (n=470) MATH	63.4	36.9
■ 11 Pct of Paid (n=110) MATH	72.7	42.1
■ 11 Pct of F/R (n=360) MATH	60.6	35.5
■ 11 Pct of Asian (n=109) MATH	76.1	38.5
■ 11 Pct of Black (n=163) MATH	55.8	37.2
■ 11 Pct of Hispanic (n=62) MATH	56.5	44.4
■ 11 Pct of Mixed (n=4) MATH	75	100
■ 11 Pct of White (n=132) MATH	65.2	30.2
■ 11 Pct of non-LEP (n=459) MATH	63.2	37.1
■ 11 Pct of LEP (n=11) MATH	72.7	25
■ 11 Pct of non-IEP (n=410) MATH	65.4	37.4
■ 11 Pct of IEP (n=60) MATH	50	25

12th Grade Math Percent Passing Q2 Academic Data 2015-2016

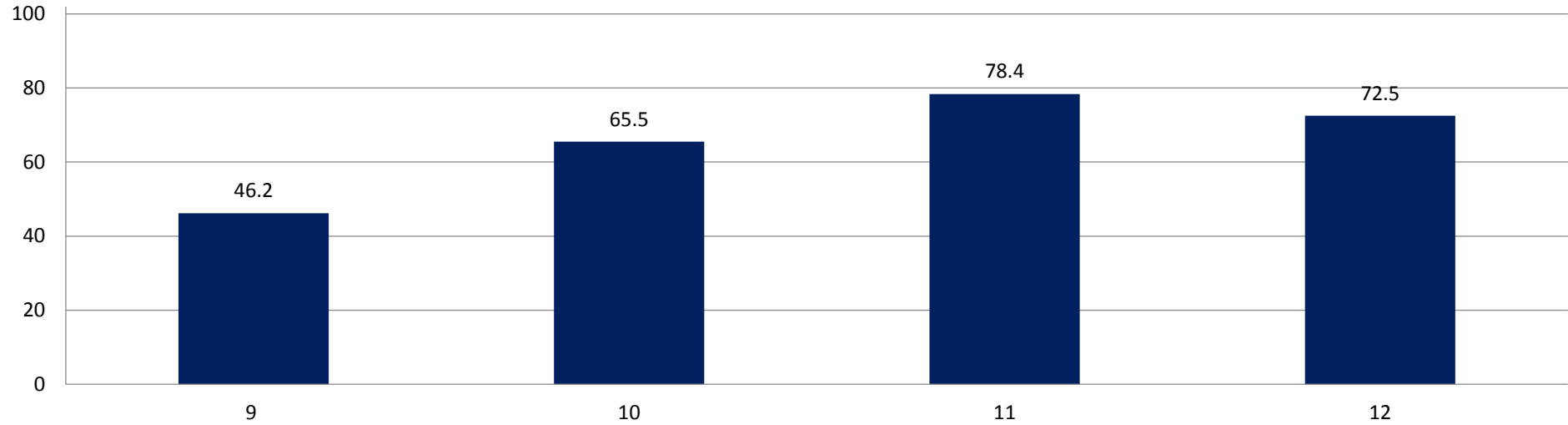


	Report Card	Interim
■ 12 Pct of Students (n=301) MATH	73.8	41.9
■ 12 Pct of Paid (n=77) MATH	84.4	45.5
■ 12 Pct of F/R (n=224) MATH	70.1	41.2
■ 12 Pct of Asian (n=70) MATH	78.6	30
■ 12 Pct of Black (n=97) MATH	56.7	44
■ 12 Pct of Hispanic (n=43) MATH	72.1	40
■ 12 Pct of Other (n=1) MATH	100	
■ 12 Pct of Mixed (n=5) MATH	60	
■ 12 Pct of White (n=85) MATH	90.6	71.4
■ 12 Pct of non-LEP (n=296) MATH	73.6	41.7
■ 12 Pct of LEP (n=5) MATH	80	50
■ 12 Pct of non-IEP (n=263) MATH	75.7	46.4
■ 12 Pct of IEP (n=38) MATH	60.5	0

High School Academics

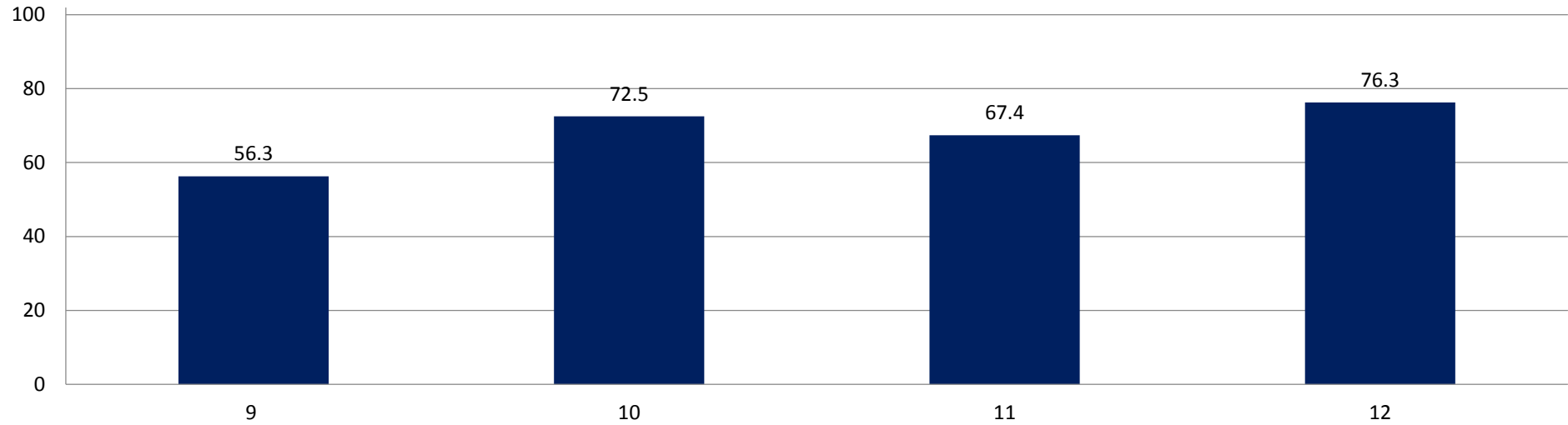
- **Percent Passing in Science and Social Studies**
Report Cards

Science Percent Passing by Grade Q2 Academic Data 2015-2016



	9	10	11	12
Pct of Students	46.2	65.5	78.4	72.5
Pct of Paid	61.8	70.6	84.8	78.1
Pct of F/R	43.4	63.8	76.3	70.9
Pct of Asian	63.2	75.2	86.7	83.3
Pct of Black	38.7	58.5	71.2	62.5
Pct of Hispanic	41.2	51	64.8	60
Pct of Other	0	100		
Pct of Mixed	50	54.5	100	100
Pct of White	51.2	73.4	85.2	83
Pct of non-LEP	46.9	66.4	78.7	71.9
Pct of LEP	27.8	44.8	69.2	100
Pct of non-IEP	50.3	65.8	81.4	73.8
Pct of IEP	30.4	63.5	60.3	64.6

Social Studies Percent Passing by Grade Q2 Academic Data 2015-2016

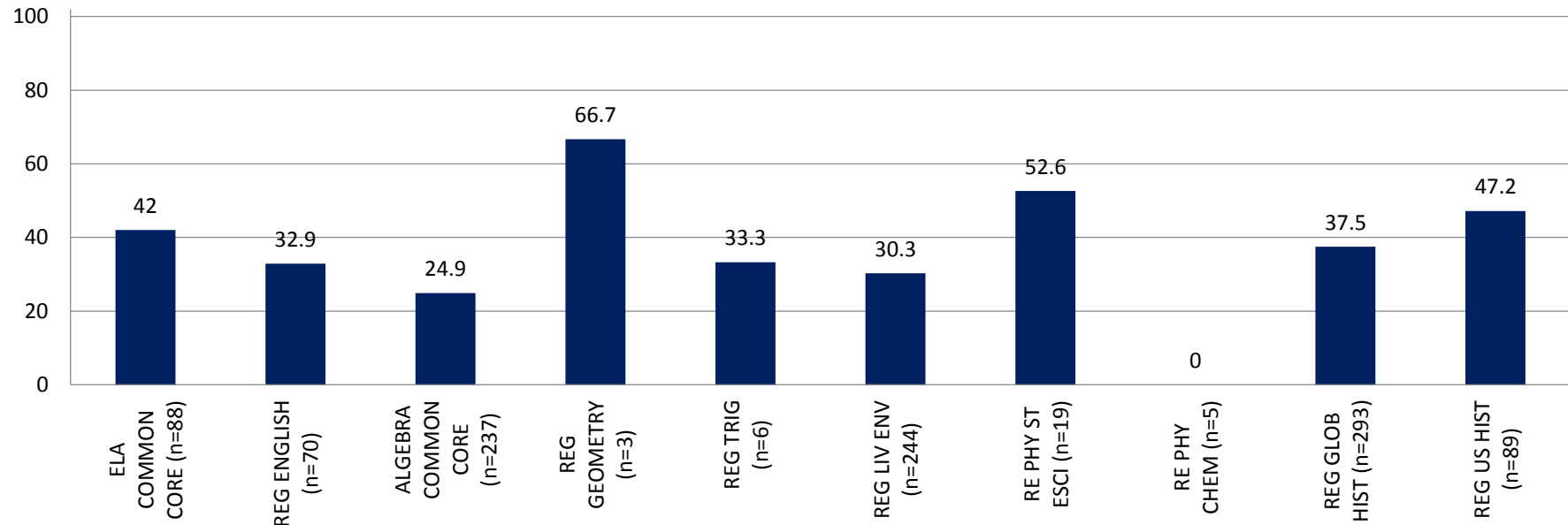


	9	10	11	12
Pct of Students	56.3	72.5	67.4	76.3
Pct of Paid	67.8	80.8	65.6	77.8
Pct of F/R	54.3	70	67.9	75.8
Pct of Asian	71.4	82.8	78.5	80.4
Pct of Black	49.2	62.1	59.2	70.1
Pct of Hispanic	53.3	70.7	60	73.7
Pct of Other	50	100		66.7
Pct of Mixed	38.5	58.3	75	62.5
Pct of White	60.7	77.2	71.8	82.8
Pct of non-LEP	56.8	73.3	67.6	76
Pct of LEP	43.2	55.9	62.5	86.7
Pct of non-IEP	59.7	72.9	67.9	77
Pct of IEP	42.2	69.6	64.6	70.5

High School Regents

- **Percent Passing**

January Regents



■ Pct Proficient- All	42	32.9	24.9	66.7	33.3	30.3	52.6	0	37.5	47.2
■ Pct Proficient- F/R	41.2	28.3	20.1	100	40	25.5	52.9	0	34.7	44.8
■ Pct Proficient- Paid	45	47.1	38.1	50	0	45	50		50	54.5
■ Pct Proficient-Am. Indian			100							
■ Pct Proficient-Asian	42.1	21.4	37.2	100	0	25	0	0	37.5	36.8
■ Pct Proficient-Black	39	42.4	18.3	0	33.3	29.5	57.1	0	38.1	37.8
■ Pct Proficient-Hispanic	60	10	32.6		100	27.5	50	0	42	78.9
■ Pct Proficient-Mixed			50			66.7			0	0
■ Pct Proficient-White	30.8	38.5	16		0	37.7	100		33.3	46.2
■ Pct Proficient- LEP	50	0	41.7			7.4			20	20
■ Pct Proficient- non-LEP	41.5	36.5	24	66.7	33.3	33.2	52.6	0	38.5	48.8
■ Pct Proficient- IEP	10.5	6.7	4.3			9.7	25		17.9	23.5
■ Pct Proficient- non-IEP	50.7	40	33.3	66.7	33.3	37.4	60	0	43.4	52.8