



# Schenectady City School District

Third Quarter Academic Progress Report

2014-2015

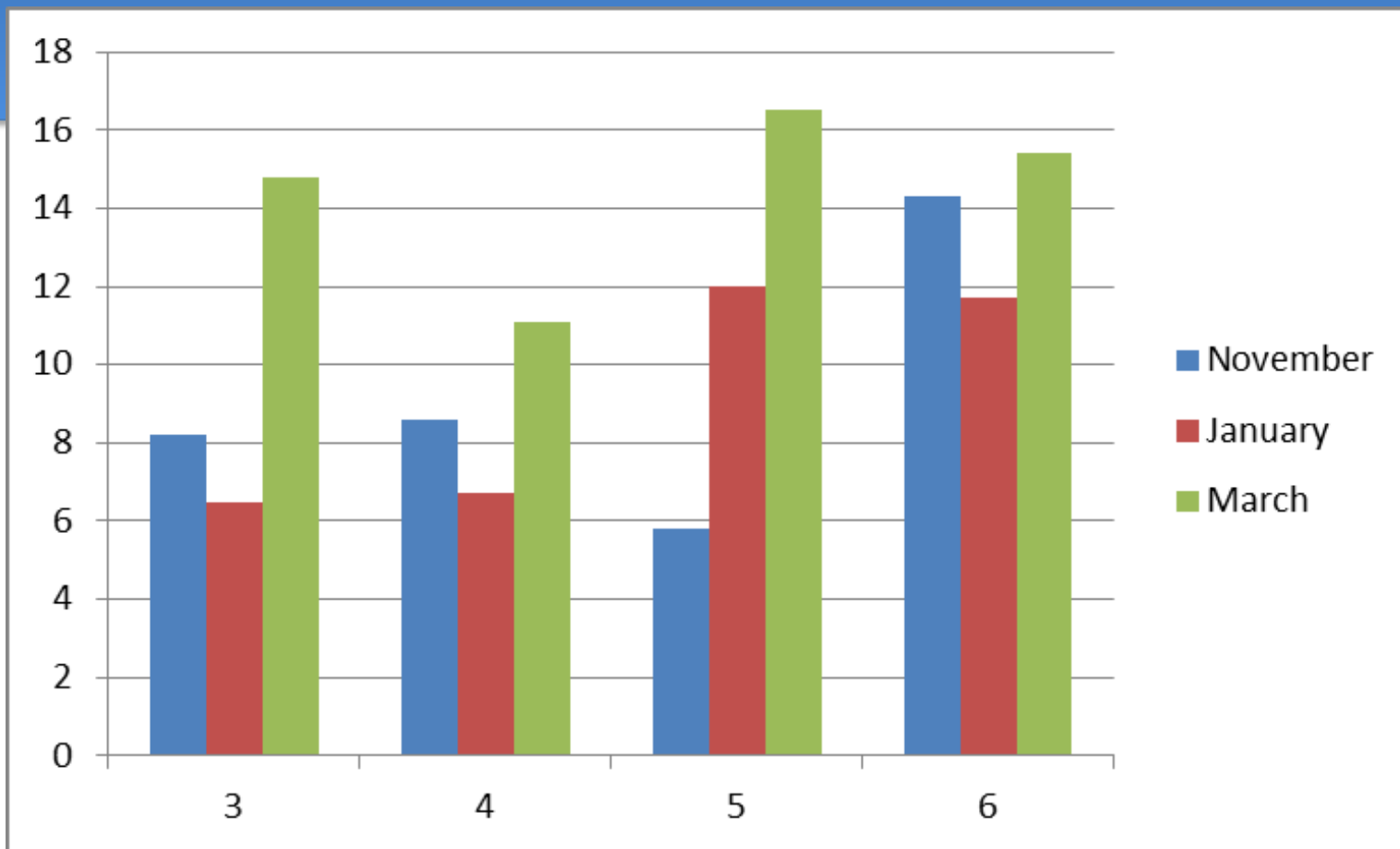


## Elementary Second Quarter Academic Progress Report

- ✓ Interim Assessment Comparison
- ✓ Report Card Grades by grade level and subject
- ✓ Attendance
- ✓ Discipline Referrals

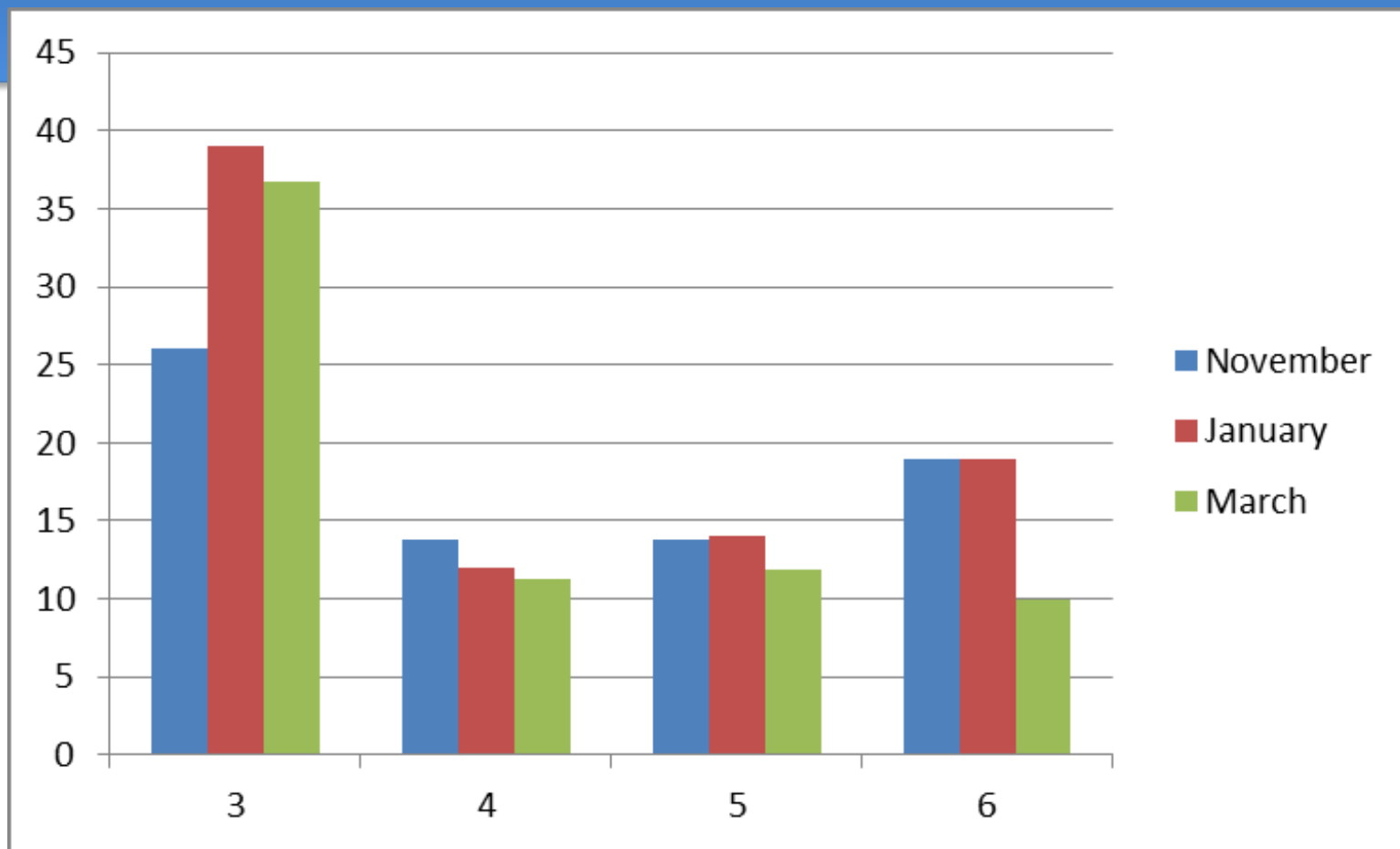


Elementary ELA Interim Assessments  
Percent of Students  
Meeting or Exceeding Grade Level Expectations  
November January March 2014-15



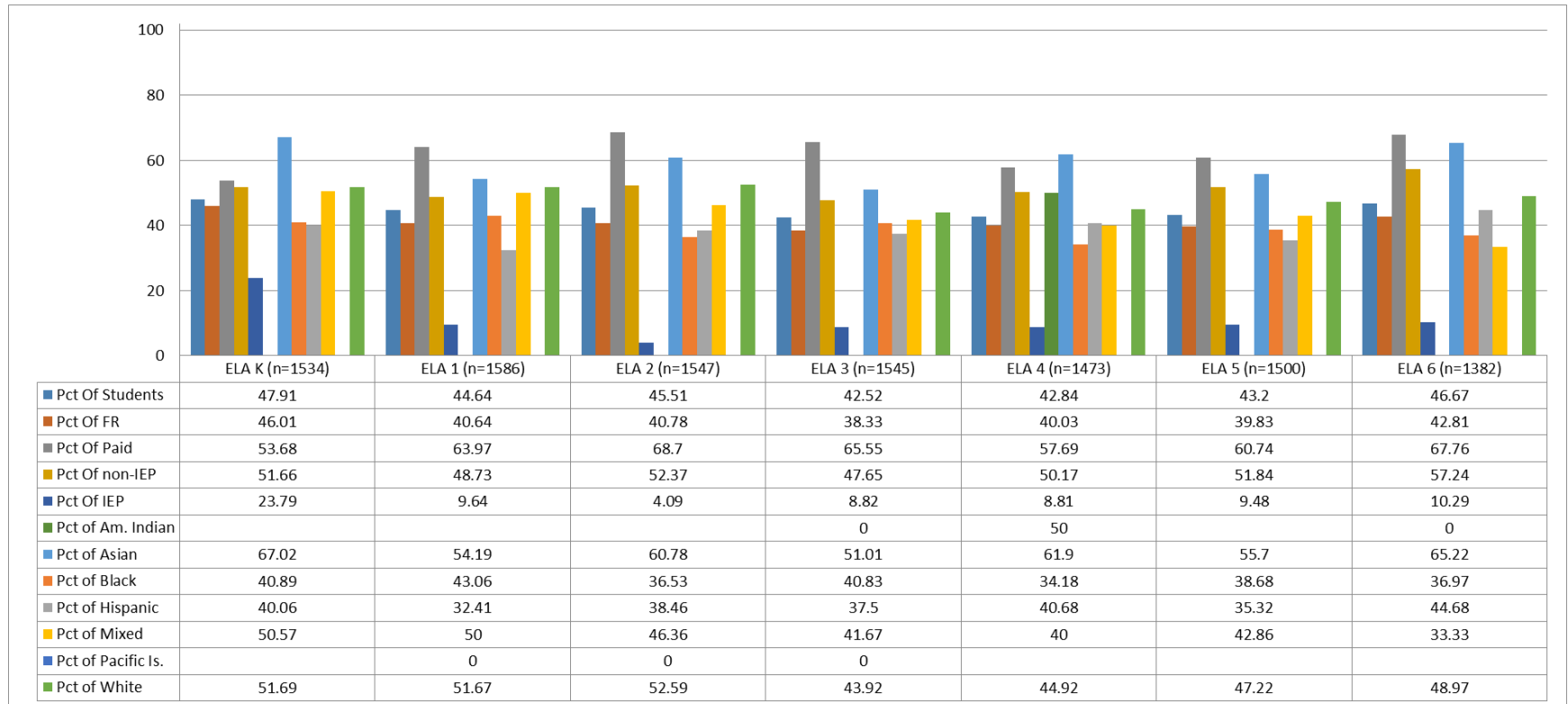


Elementary Math Interim Assessments  
Percent of Students  
Meeting or Exceeding Grade Level Expectations  
November January March



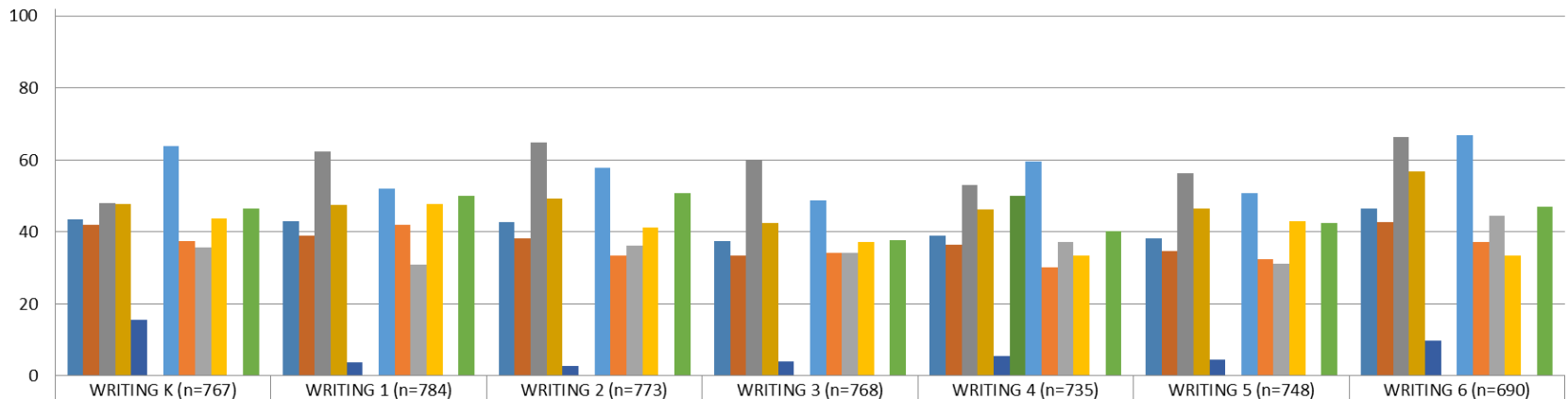


# Kindergarten – Sixth Grade 3rd Quarter Percent of Students Meeting or Exceeding Grade Level Expectations In English Language Arts





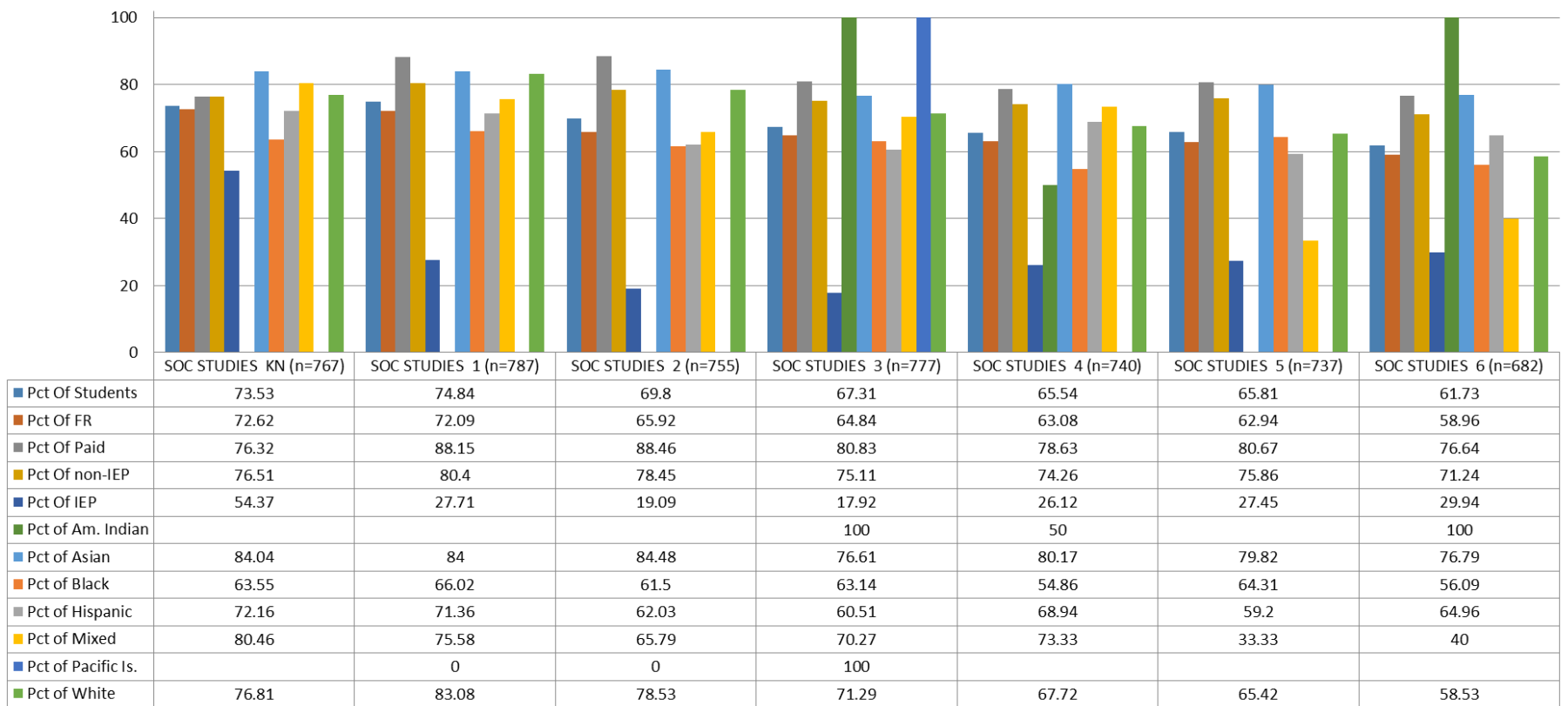
# Kindergarten – Sixth Grade 3rd Quarter Percent of Students Meeting or Exceeding Grade Level Expectations In Writing



	WRITING K (n=767)	WRITING 1 (n=784)	WRITING 2 (n=773)	WRITING 3 (n=768)	WRITING 4 (n=735)	WRITING 5 (n=748)	WRITING 6 (n=690)
Pct Of Students	43.42	42.98	42.69	37.5	39.05	38.1	46.38
Pct Of FR	41.94	38.98	38.16	33.38	36.41	34.61	42.71
Pct Of Paid	47.89	62.22	64.89	60.17	52.99	56.2	66.36
Pct Of non-IEP	47.74	47.58	49.32	42.39	46.2	46.57	56.9
Pct Of IEP	15.53	3.66	2.73	4.08	5.43	4.64	9.74
Pct of Am. Indian				0	50		0
Pct of Asian	63.83	52	57.76	48.78	59.48	50.88	66.96
Pct of Black	37.44	41.95	33.33	34.13	30.2	32.52	37.18
Pct of Hispanic	35.8	30.81	36.09	34.19	37.27	31.2	44.44
Pct of Mixed	43.68	47.67	41.33	37.14	33.33	42.86	33.33
Pct of Pacific Is.		0	0	0			
Pct of White	46.38	50	50.78	37.81	40.32	42.59	47

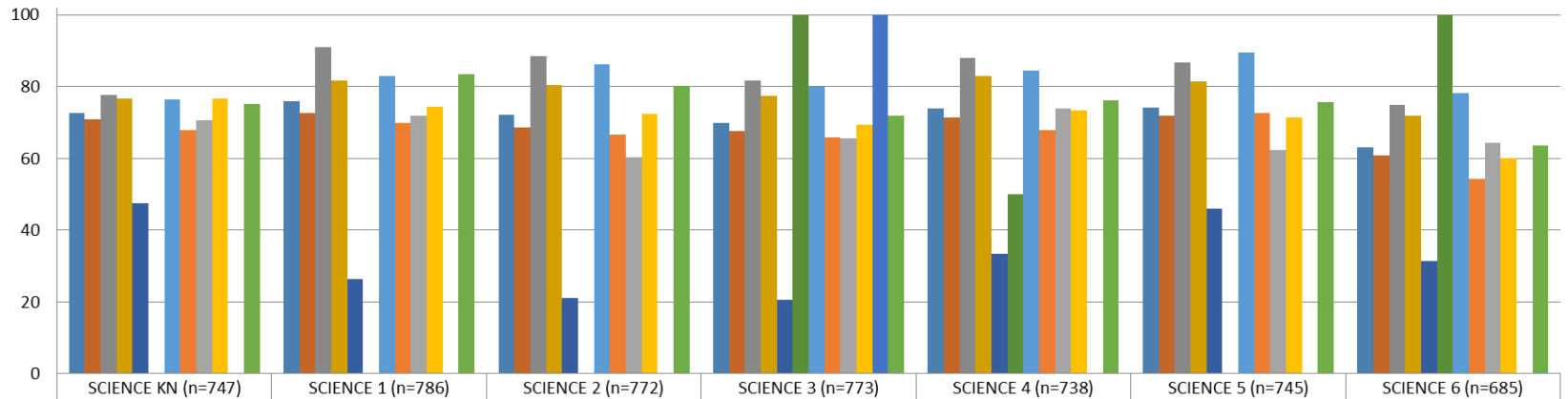


# Kindergarten – Sixth Grade 3rd Quarter Percent of Students Meeting or Exceeding Grade Level Expectations In Social Studies





# Kindergarten – Sixth Grade 3rd Quarter Percent of Students Meeting or Exceeding Grade Level Expectations In Science

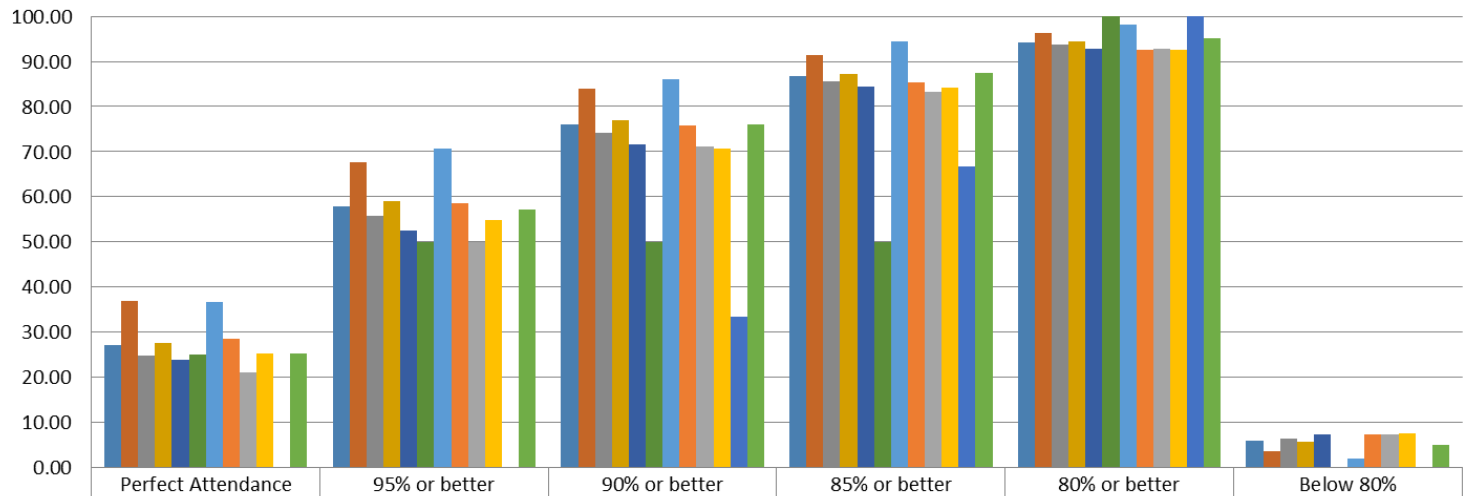


	SCIENCE KN (n=747)	SCIENCE 1 (n=786)	SCIENCE 2 (n=772)	SCIENCE 3 (n=773)	SCIENCE 4 (n=738)	SCIENCE 5 (n=745)	SCIENCE 6 (n=685)
Pct Of Students	72.56	75.83	72.02	69.86	73.98	74.23	63.07
Pct Of FR	70.89	72.7	68.64	67.69	71.34	71.79	60.9
Pct Of Paid	77.54	91.04	88.55	81.67	88.03	86.78	74.77
Pct Of non-IEP	76.55	81.65	80.39	77.35	82.84	81.34	71.96
Pct Of IEP	47.57	26.51	21.1	20.59	33.33	46	31.33
Pct of Am. Indian				100	50		100
Pct of Asian	76.34	83	86.21	79.84	84.35	89.38	78.26
Pct of Black	67.84	69.9	66.51	65.87	67.97	72.63	54.31
Pct of Hispanic	70.66	71.86	60.36	65.61	73.91	62.2	64.41
Pct of Mixed	76.74	74.42	72.37	69.44	73.33	71.43	60
Pct of Pacific Is.		0	0	100			
Pct of White	75.25	83.51	80.21	71.78	76.19	75.59	63.55





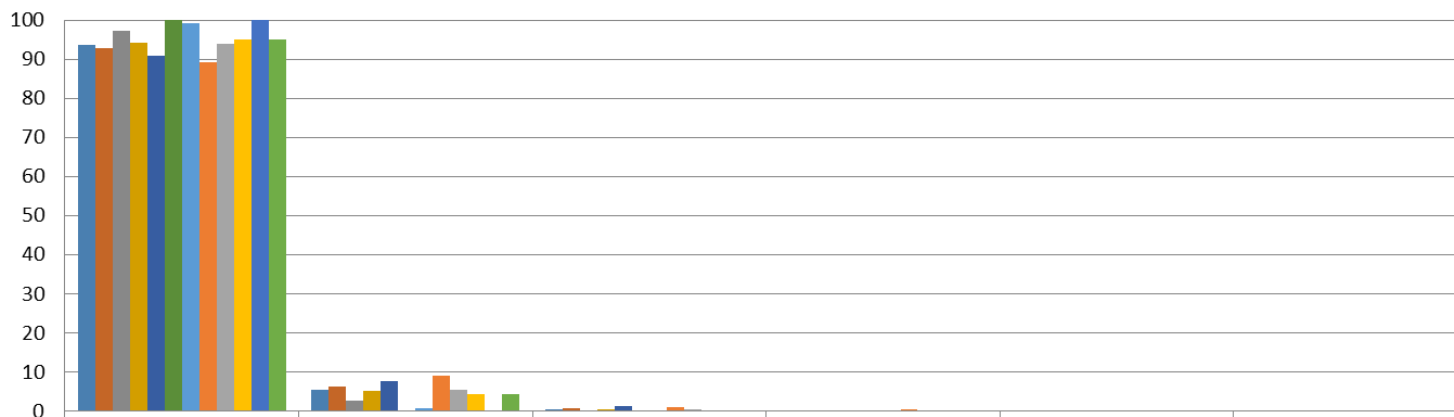
## K-6 Attendance 3rd Quarter Data 2014-2015



Pct of Students (n=5632)	27.06	57.94	76.08	86.74	94.14	5.86
Pct of Paid (n=1051)	36.92	67.75	83.92	91.44	96.38	3.62
Pct of F/R (n=4581)	24.8	55.69	74.29	85.66	93.63	6.37
Pct of Non-IEP (n=4730)	27.65	58.96	76.93	87.17	94.4	5.6
Pct of IEP (n=902)	23.95	52.55	71.62	84.48	92.79	7.21
Pct of Race: Am. Indian (n=4)	25	50	50	50	100	0
Pct of Race: Asian (n=839)	36.71	70.68	86.05	94.4	98.09	1.91
Pct of Race: Black (n=1763)	28.42	58.59	75.72	85.42	92.68	7.32
Pct of Race: Hispanic (n=1172)	21.08	49.91	71.25	83.19	92.75	7.25
Pct of Race: Mixed (n=359)	25.35	54.87	70.75	84.12	92.48	7.52
Pct of Race: Pacific Is. (n=3)	0	0	33.33	66.67	100	0
Pct of Race: White (n=1492)	25.2	57.17	76.14	87.53	95.11	4.89



## K-6 Discipline Referrals 3rd Quarter Data 2014-2015



	No Referrals	1-5 Referrals	6-10 Referrals	11-15 Referrals	16-20 Referrals	20+ Referrals
■ Pct of All (n=5635)	93.61	5.55	0.55	0.2	0.07	0.02
■ Pct of FR (n=4581)	92.75	6.24	0.65	0.24	0.09	0.02
■ Pct of Paid (n=1054)	97.34	2.56	0.09	0	0	0
■ Pct of non-IEP (n=4733)	94.13	5.13	0.42	0.23	0.06	0.02
■ Pct of IEP (n=902)	90.91	7.76	1.22	0	0.11	0
■ Pct of Race: Am. Indian (n=4)	100	0	0	0	0	0
■ Pct of Race: Asian (n=839)	99.17	0.72	0.12	0	0	0
■ Pct of Race: Black (n=1766)	89.18	9.12	1.13	0.45	0.06	0.06
■ Pct of Race: Hispanic (n=1172)	93.86	5.46	0.51	0.17	0	0
■ Pct of Race: Mixed (n=359)	94.99	4.46	0.28	0	0.28	0
■ Pct of Race: Pacific Is. (n=3)	100	0	0	0	0	0
■ Pct of Race: White (n=1492)	95.17	4.42	0.2	0.07	0.13	0



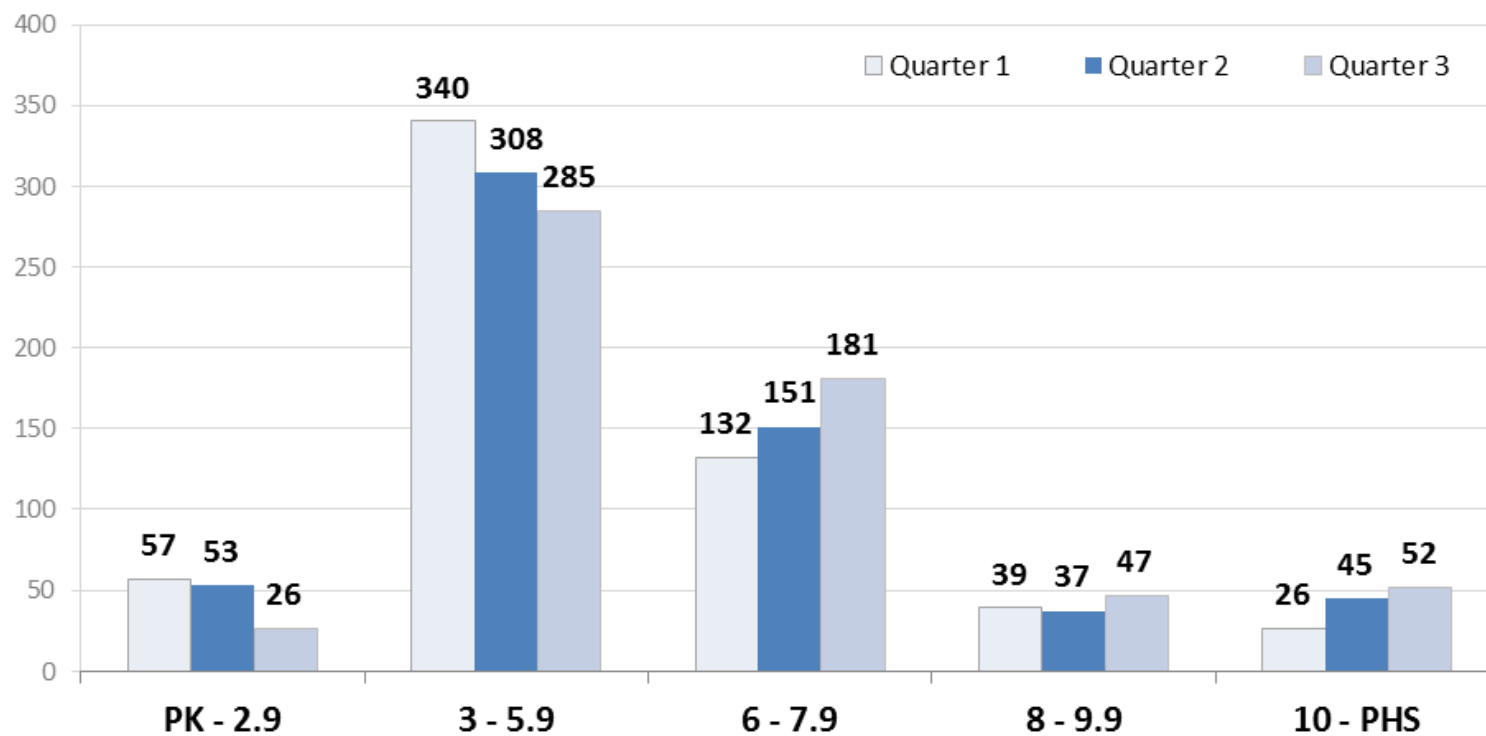
# Middle School 3rd Quarter Academic Progress Report

- ✓ STAR Reading Report
- ✓ Report Card Grades by subject
- ✓ Attendance
- ✓ Discipline Referrals



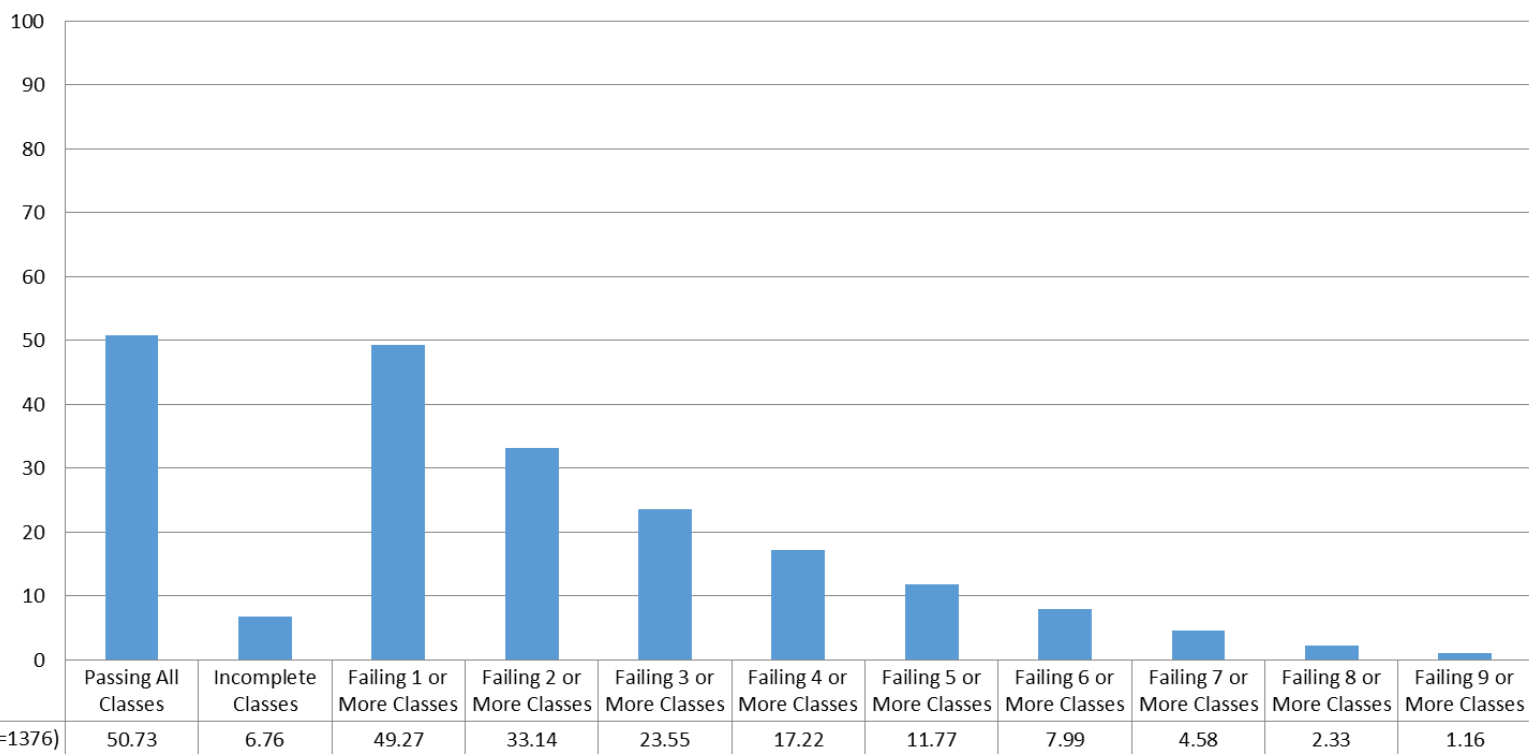
# Middle School 3rd Quarter Academic Progress Report – STAR Reading

STAR Middle School Data  
Student count per grade band



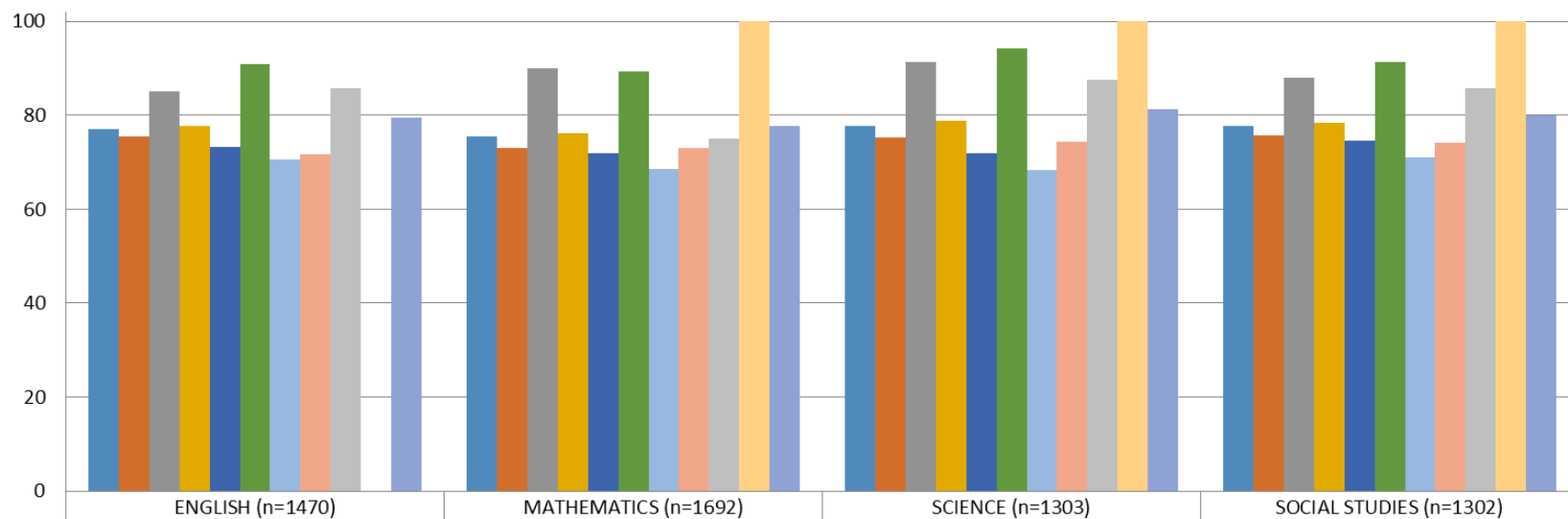


## Middle School Students 3rd Quarter Percent of Students Passing Classes





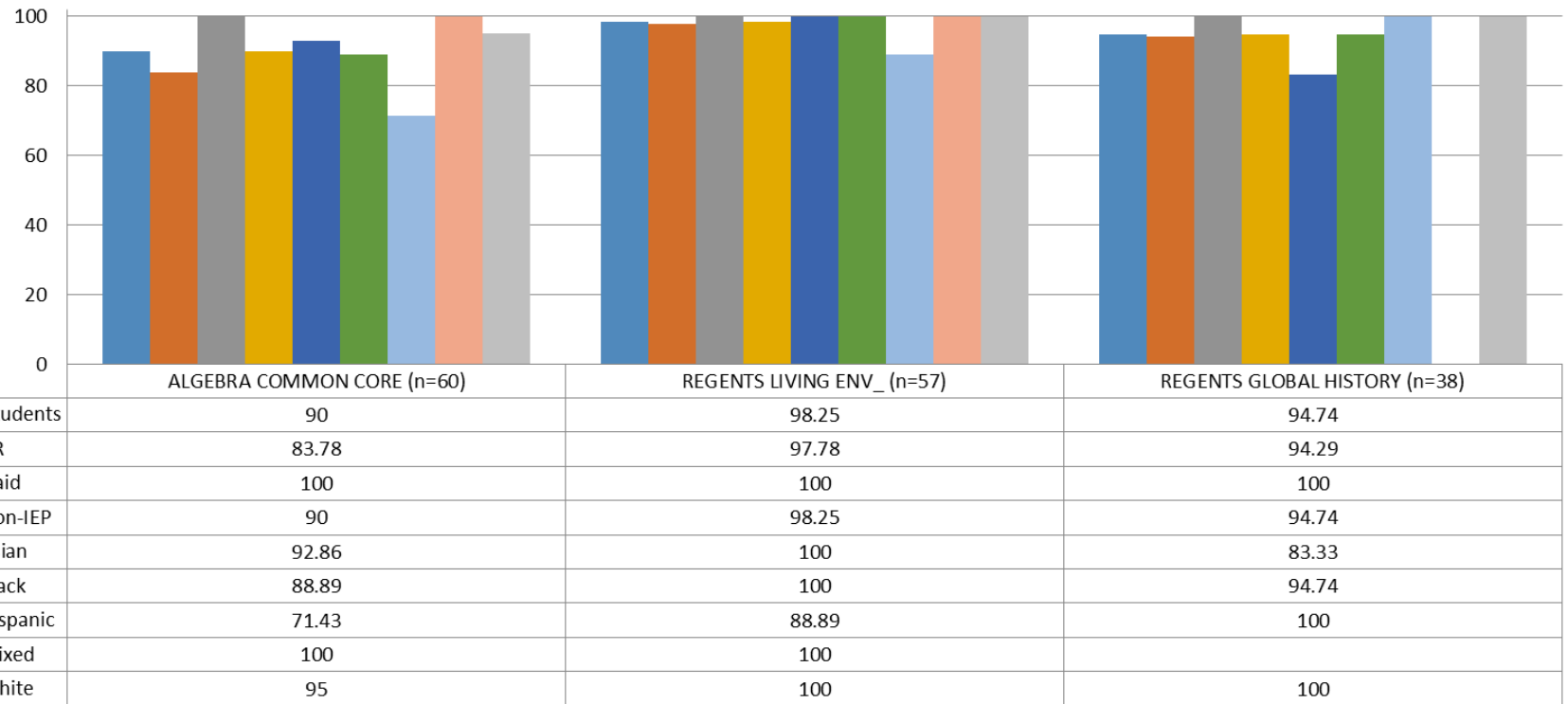
## Middle School Students 3rd Quarter Percent Passing by Course



	ENGLISH (n=1470)	MATHEMATICS (n=1692)	SCIENCE (n=1303)	SOCIAL STUDIES (n=1302)
Pct Of Students	77.01	75.53	77.74	77.73
Pct Of FR	75.58	73.04	75.21	75.78
Pct Of Paid	85.07	89.96	91.26	87.98
Pct Of non-IEP	77.62	76.12	78.79	78.31
Pct Of IEP	73.33	71.97	72	74.5
Pct of Asian	90.94	89.21	94.14	91.21
Pct of Black	70.58	68.5	68.34	70.92
Pct of Hispanic	71.72	72.91	74.32	74.09
Pct of Mixed	85.71	75	87.5	85.71
Pct of Pacific Is.		100	100	100
Pct of White	79.43	77.73	81.18	79.83

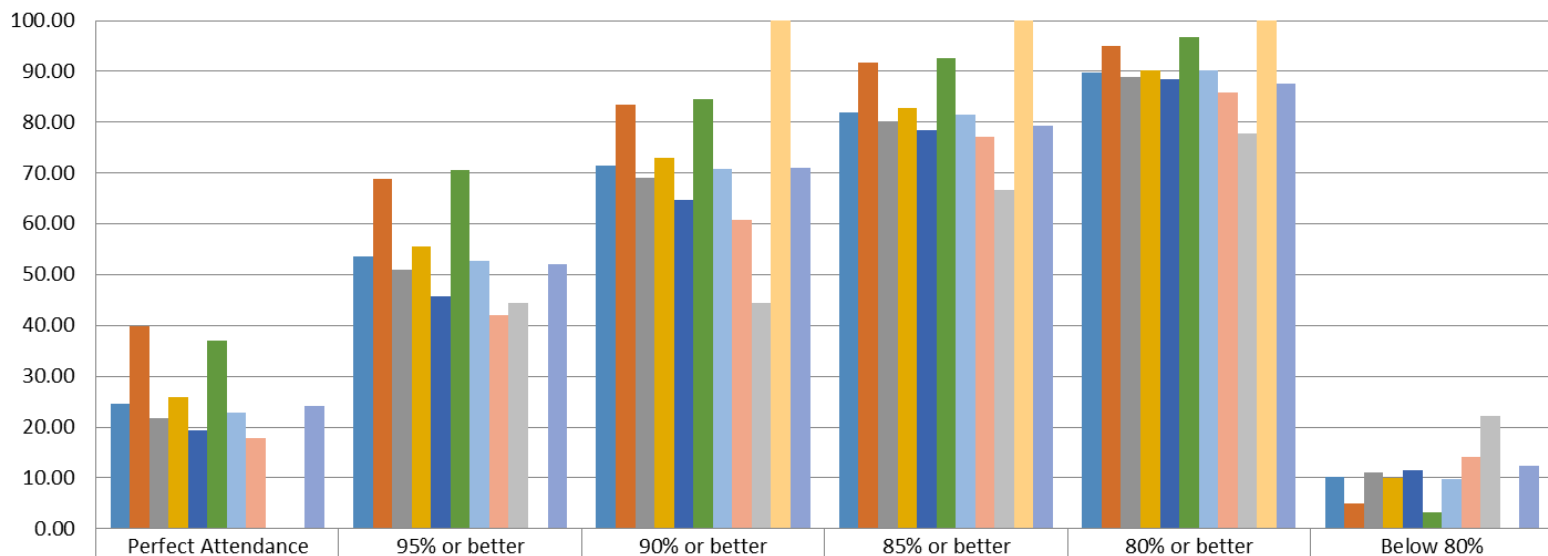


## Middle School Students 3rd Quarter Percent Passing by Regents Course





## Grade 7 & 8 3rd Quarter Attendance Data 2014-2015



	Perfect Attendance	95% or better	90% or better	85% or better	80% or better	Below 80%
Pct of Students (n=1384)	24.64	53.68	71.39	82.01	89.81	10.19
Pct of Paid (n=218)	39.91	68.81	83.49	91.74	94.95	5.05
Pct of F/R (n=1166)	21.78	50.86	69.13	80.19	88.85	11.15
Pct of Non-IEP (n=1115)	25.92	55.61	73	82.87	90.13	9.87
Pct of IEP (n=269)	19.33	45.72	64.68	78.44	88.48	11.52
Pct of Race: Asian (n=241)	36.93	70.54	84.65	92.53	96.68	3.32
Pct of Race: Black (n=516)	22.87	52.71	70.74	81.59	90.31	9.69
Pct of Race: Hispanic (n=240)	17.92	42.08	60.83	77.08	85.83	14.17
Pct of Race: Mixed (n=9)	0	44.44	44.44	66.67	77.78	22.22
Pct of Race: Pacific Is. (n=1)	0	0	100	100	100	0
Pct of Race: White (n=377)	24.14	51.99	71.09	79.31	87.53	12.47

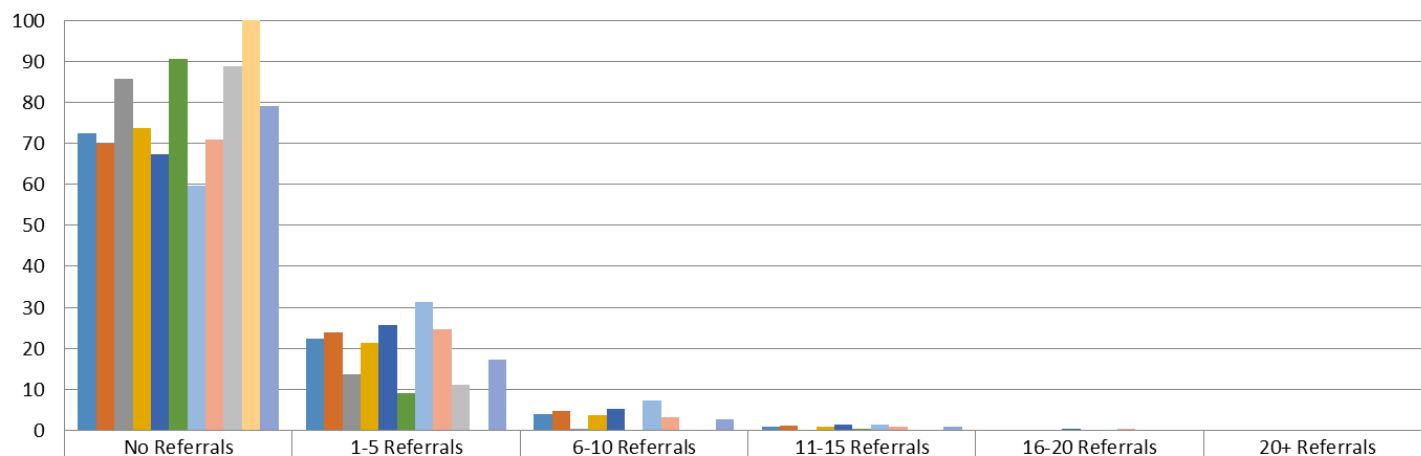




## Grade 7 & 8

### 3rd Quarter Discipline Referral Data

### 2014-2015



	No Referrals	1-5 Referrals	6-10 Referrals	11-15 Referrals	16-20 Referrals	20+ Referrals
Pct of All (n=1384)	72.47	22.25	4.05	0.94	0.14	0.14
Pct of FR (n=1166)	69.98	23.84	4.72	1.11	0.17	0.17
Pct of Paid (n=218)	85.78	13.76	0.46	0	0	0
Pct of non-IEP (n=1115)	73.72	21.43	3.77	0.81	0.09	0.18
Pct of IEP (n=269)	67.29	25.65	5.2	1.49	0.37	0
Pct of Race: Asian (n=241)	90.46	9.13	0	0.41	0	0
Pct of Race: Black (n=516)	59.69	31.2	7.36	1.36	0.19	0.19
Pct of Race: Hispanic (n=240)	70.83	24.58	3.33	0.83	0.42	0
Pct of Race: Mixed (n=9)	88.89	11.11	0	0	0	0
Pct of Race: Pacific Is. (n=1)	100	0	0	0	0	0
Pct of Race: White (n=377)	79.05	17.24	2.65	0.8	0	0.27

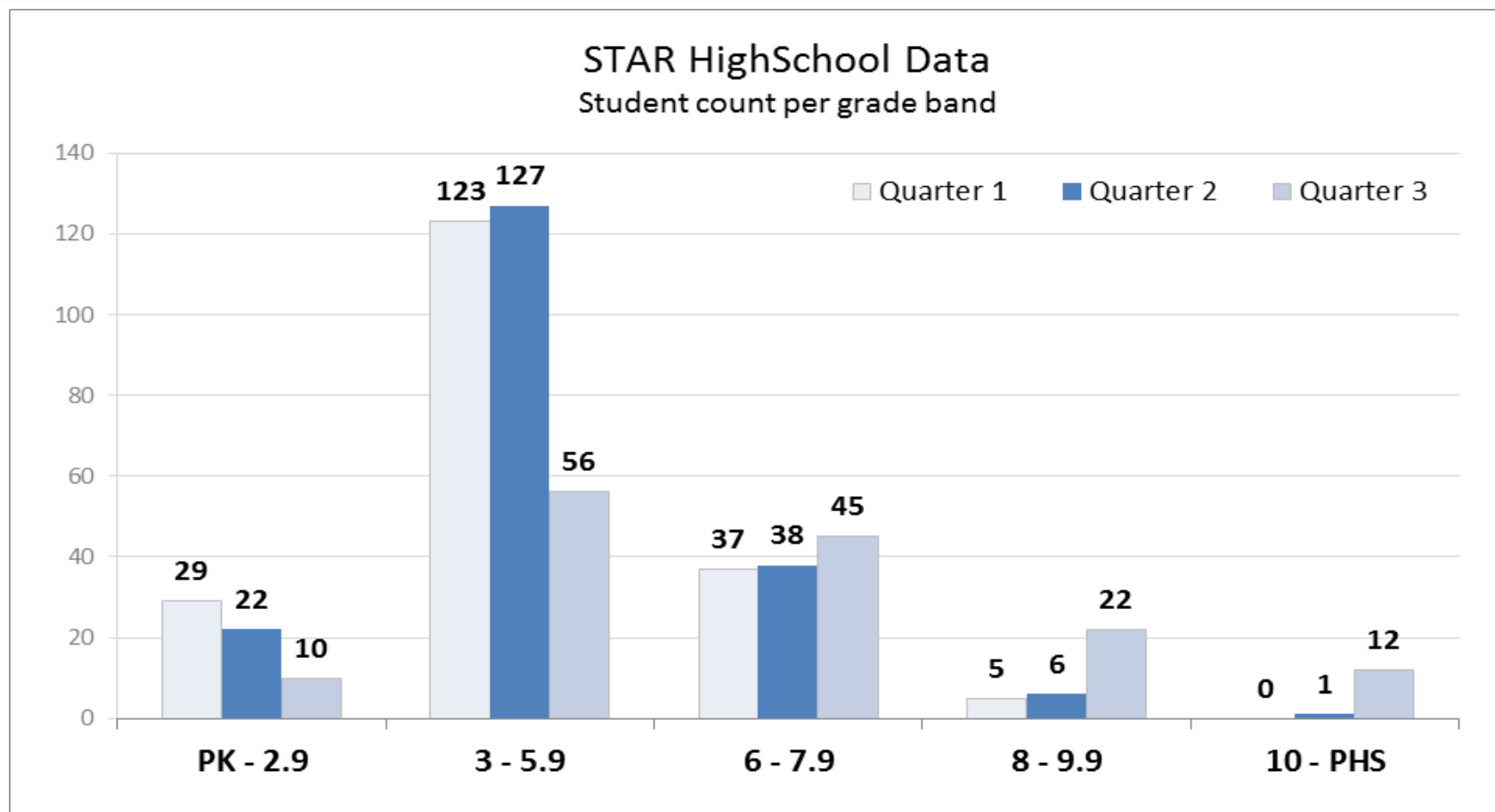


# High School 3rd Quarter Academic Progress Report

- ✓ STAR Reading Report
- ✓ Report Card Grades by subject
- ✓ Attendance
- ✓ Discipline Referrals

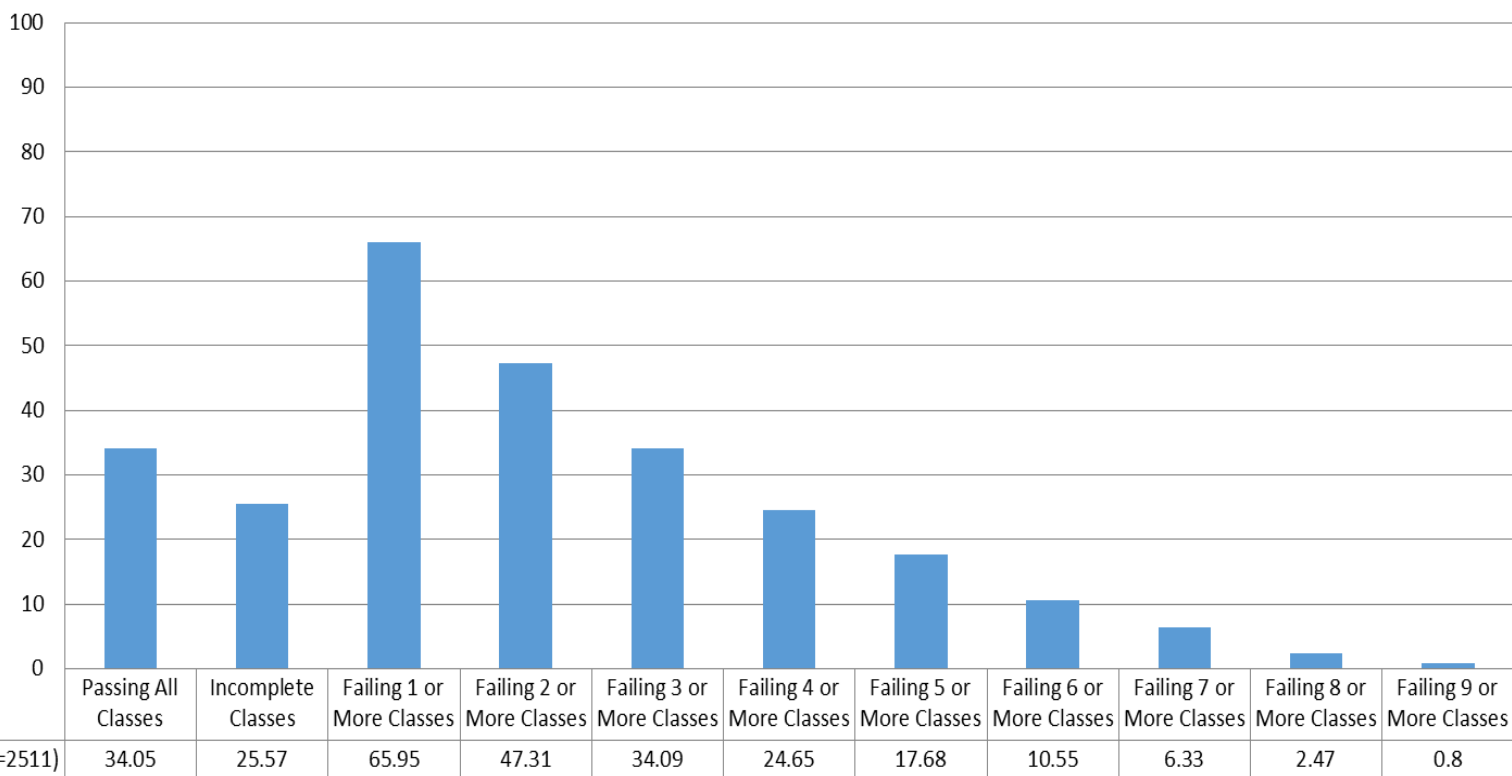


# High School 3rd Quarter Academic Progress Report – STAR Reading



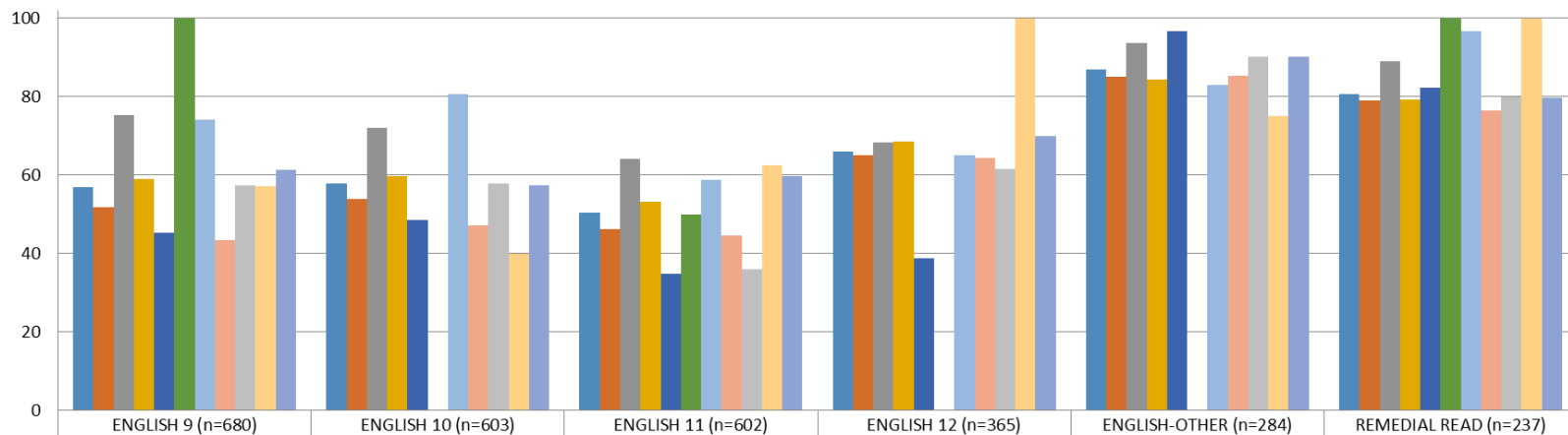


## High School Students 3rd Quarter Percent of Students Passing Classes





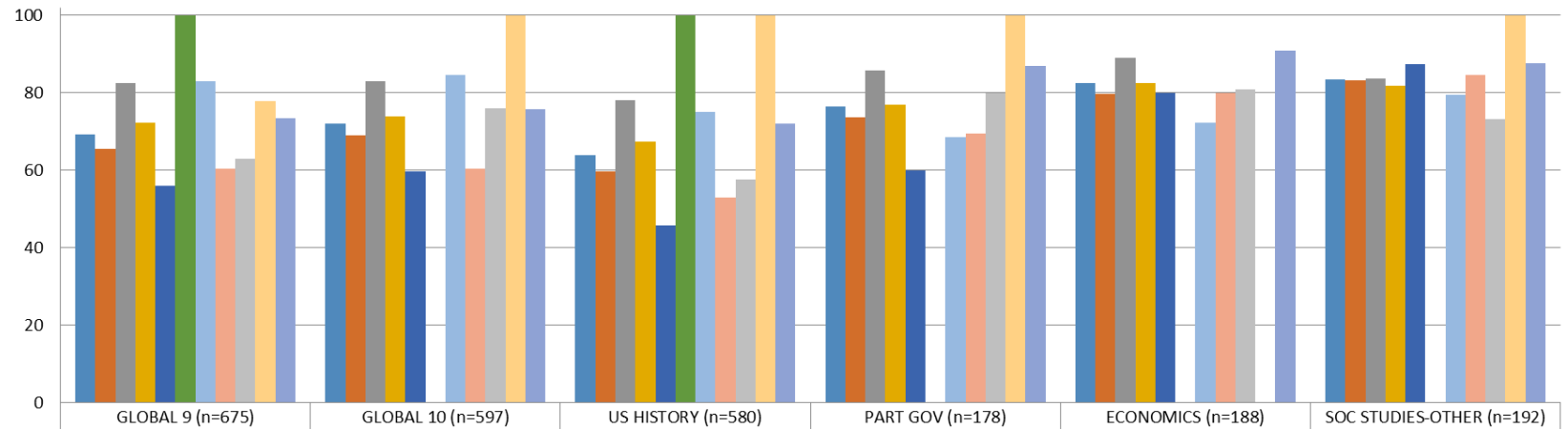
## High School Students 3rd Quarter Percent Passing by English Course



	ENGLISH 9 (n=680)	ENGLISH 10 (n=603)	ENGLISH 11 (n=602)	ENGLISH 12 (n=365)	ENGLISH-OTHER (n=284)	REMEDIAL READ (n=237)
Pct Of Students	56.91	57.71	50.33	66.03	86.97	80.59
Pct Of FR	51.7	53.97	46.09	65.1	85.07	79.1
Pct Of Paid	75.33	72	64.08	68.18	93.65	88.89
Pct of non-IEP	59.06	59.68	53.25	68.56	84.23	79.2
Pct Of IEP	45.28	48.6	34.74	38.71	96.77	82.14
Pct of Am. Indian	100		50			100
Pct of Asian	74.22	80.73	58.65	65.08	83.05	96.67
Pct of Black	43.28	47.09	44.44	64.39	85.39	76.32
Pct of Hispanic	57.41	57.89	36	61.54	90.24	80
Pct of Mixed	57.14	40	62.5	100	75	100
Pct of White	61.42	57.37	59.67	69.83	90.11	79.63



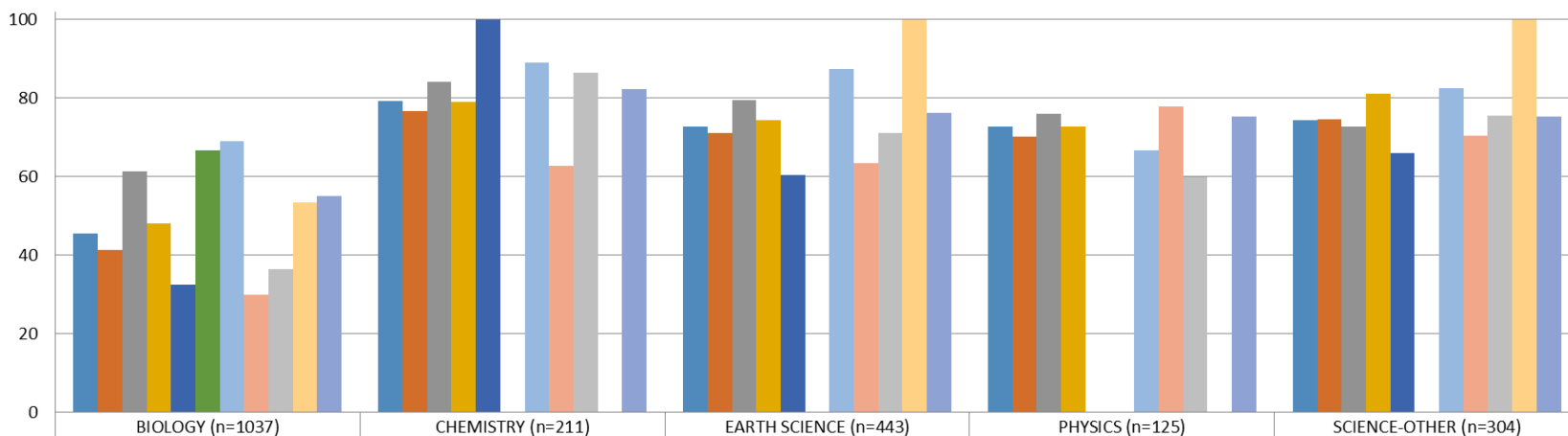
## High School Students 3rd Quarter Percent Passing by Social Studies Course



	GLOBAL 9 (n=675)	GLOBAL 10 (n=597)	US HISTORY (n=580)	PART GOV (n=178)	ECONOMICS (n=188)	SOC STUDIES-OTHER (n=192)
Pct Of Students	69.33	72.03	63.79	76.4	82.45	83.33
Pct Of FR	65.38	69.02	59.6	73.53	79.7	83.21
Pct Of Paid	82.58	82.95	78.03	85.71	89.09	83.61
Pct Of non-IEP	72.17	73.85	67.36	76.88	82.58	81.75
Pct Of IEP	55.93	59.74	45.83	60	80	87.27
Pct of Am. Indian	100		100			
Pct of Asian	82.84	84.62	75	68.57	72.22	79.41
Pct of Black	60.43	60.27	52.97	69.35	80	84.48
Pct of Hispanic	62.86	76	57.58	80	80.77	73.08
Pct of Mixed	77.78	100	100	100		100
Pct of White	73.33	75.82	71.93	86.79	90.91	87.67



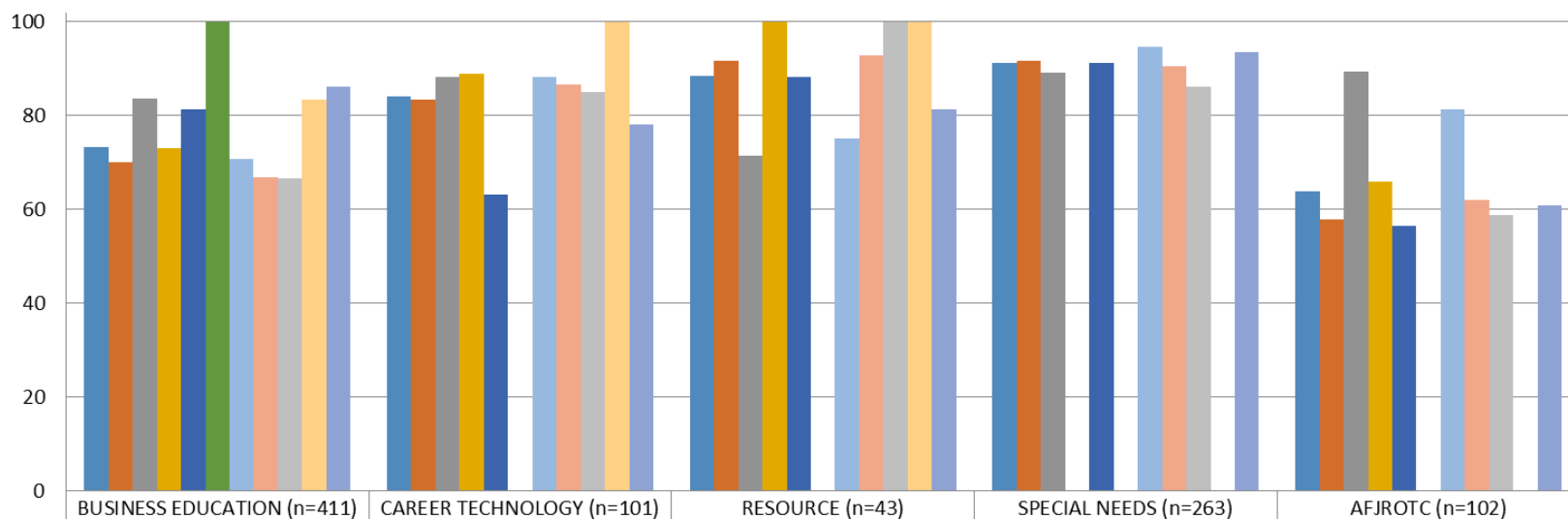
## High School Students 3rd Quarter Percent Passing by Science Course



	BIOLOGY (n=1037)	CHEMISTRY (n=211)	EARTH SCIENCE (n=443)	PHYSICS (n=125)	SCIENCE-OTHER (n=304)
Pct Of Students	45.52	79.15	72.69	72.8	74.34
Pct Of FR	41.36	76.76	71.11	70.15	74.62
Pct Of Paid	61.4	84.06	79.52	75.86	72.73
Pct Of non-IEP	48.1	78.95	74.36	72.8	81.07
Pct Of IEP	32.35	100	60.38		65.93
Pct of Am. Indian	66.67		0		
Pct of Asian	69.07	88.89	87.36	66.67	82.5
Pct of Black	29.92	62.75	63.37	77.78	70.45
Pct of Hispanic	36.36	86.36	70.97	60	75.41
Pct of Mixed	53.33	0	100		100
Pct of White	55.04	82.19	76.27	75.36	75.36



## High School Students 2nd Quarter Percent Passing by Department

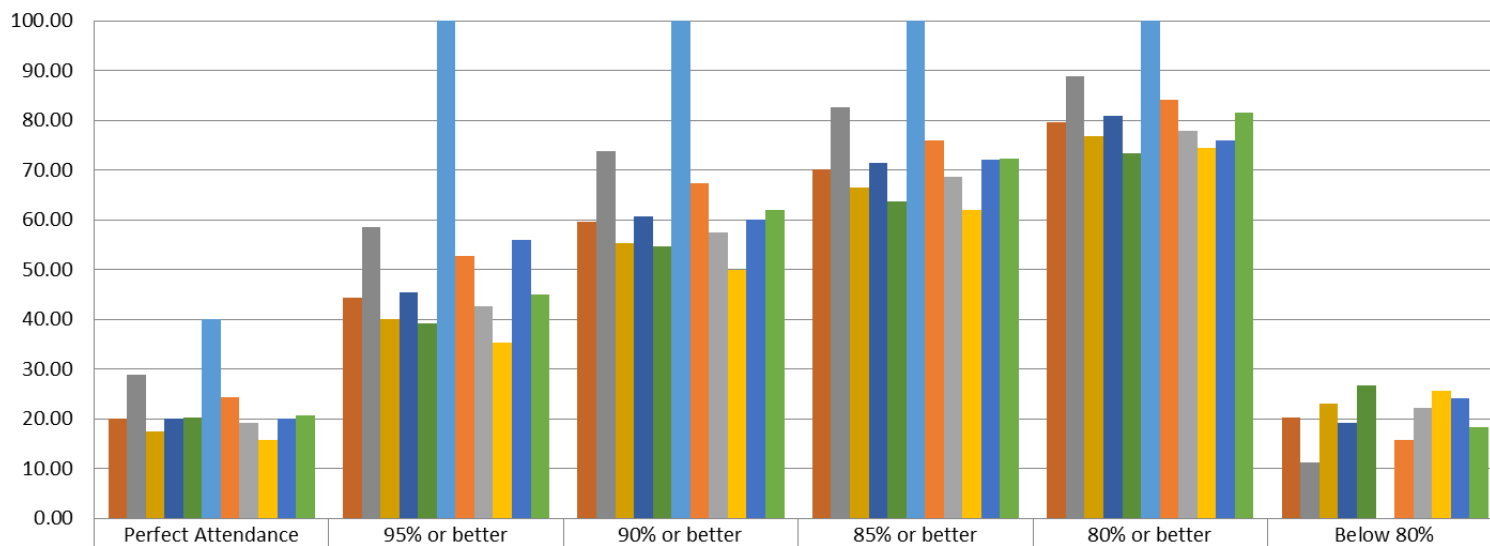


	BUSINESS EDUCATION (n=411)	CAREER TECHNOLOGY (n=101)	RESOURCE (n=43)	SPECIAL NEEDS (n=263)	AFJROTC (n=102)
Pct Of Students	73.24	84.16	88.37	91.25	63.73
Pct Of FR	70.06	83.33	91.67	91.59	57.83
Pct Of Paid	83.51	88.24	71.43	89.19	89.47
Pct Of non-IEP	72.91	89.02	100		65.82
Pct Of IEP	81.25	63.16	88.1	91.25	56.52
Pct of Am. Indian	100				
Pct of Asian	70.67	88.24	75	94.74	81.25
Pct of Black	66.9	86.67	92.86	90.52	62.07
Pct of Hispanic	66.67	85	100	86.11	58.82
Pct of Mixed	83.33	100	100		
Pct of White	86.09	78.12	81.25	93.48	60.87





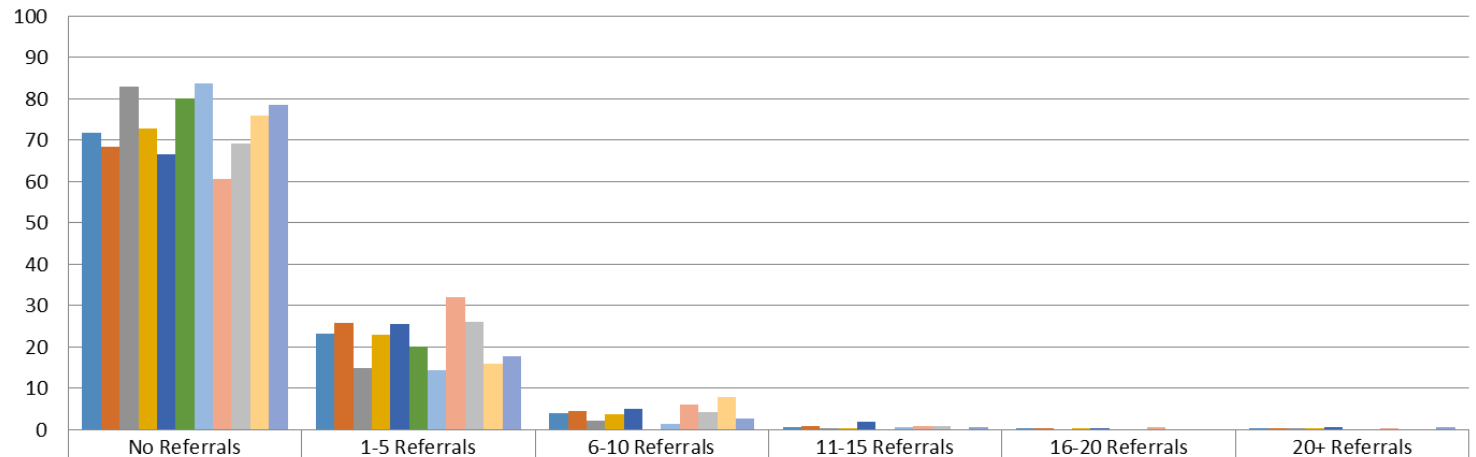
# High School Students 3rd Quarter Attendance Data 2014-2015



	Perfect Attendance	95% or better	90% or better	85% or better	80% or better	Below 80%
Pct of Students (n=2534)	20.05	44.32	59.67	70.21	79.68	20.32
Pct of Paid (n=592)	28.72	58.45	73.82	82.6	88.85	11.15
Pct of F/R (n=1942)	17.4	40.01	55.36	66.43	76.88	23.12
Pct of Non-IEP (n=2115)	20	45.34	60.66	71.49	80.95	19.05
Pct of IEP (n=419)	20.29	39.14	54.65	63.72	73.27	26.73
Pct of Race: Am. Indian (n=5)	40	100	100	100	100	0
Pct of Race: Asian (n=475)	24.21	52.63	67.37	76	84.21	15.79
Pct of Race: Black (n=885)	19.1	42.6	57.51	68.59	77.85	22.15
Pct of Race: Hispanic (n=382)	15.71	35.34	50	62.04	74.35	25.65
Pct of Race: Mixed (n=25)	20	56	60	72	76	24
Pct of Race: White (n=762)	20.6	44.88	61.94	72.31	81.63	18.37



# High School Students 3rd Quarter Discipline Referral Data 2014-2015



	No Referrals	1-5 Referrals	6-10 Referrals	11-15 Referrals	16-20 Referrals	20+ Referrals
Pct of All (n=2534)	71.7	23.28	3.87	0.71	0.2	0.24
Pct of FR (n=1942)	68.33	25.85	4.43	0.88	0.26	0.26
Pct of Paid (n=592)	82.77	14.86	2.03	0.17	0	0.17
Pct of non-IEP (n=2115)	72.72	22.84	3.64	0.47	0.19	0.14
Pct of IEP (n=419)	66.59	25.54	5.01	1.91	0.24	0.72
Pct of Race: Am. Indian (n=5)	80	20	0	0	0	0
Pct of Race: Asian (n=475)	83.58	14.32	1.47	0.63	0	0
Pct of Race: Black (n=885)	60.45	31.98	5.99	0.9	0.56	0.11
Pct of Race: Hispanic (n=382)	69.11	25.92	4.19	0.79	0	0
Pct of Race: Mixed (n=25)	76	16	8	0	0	0
Pct of Race: White (n=762)	78.48	17.72	2.62	0.52	0	0.66



Questions??

