



Schenectady City School District

First Quarter Academic Progress Report

2014-2015



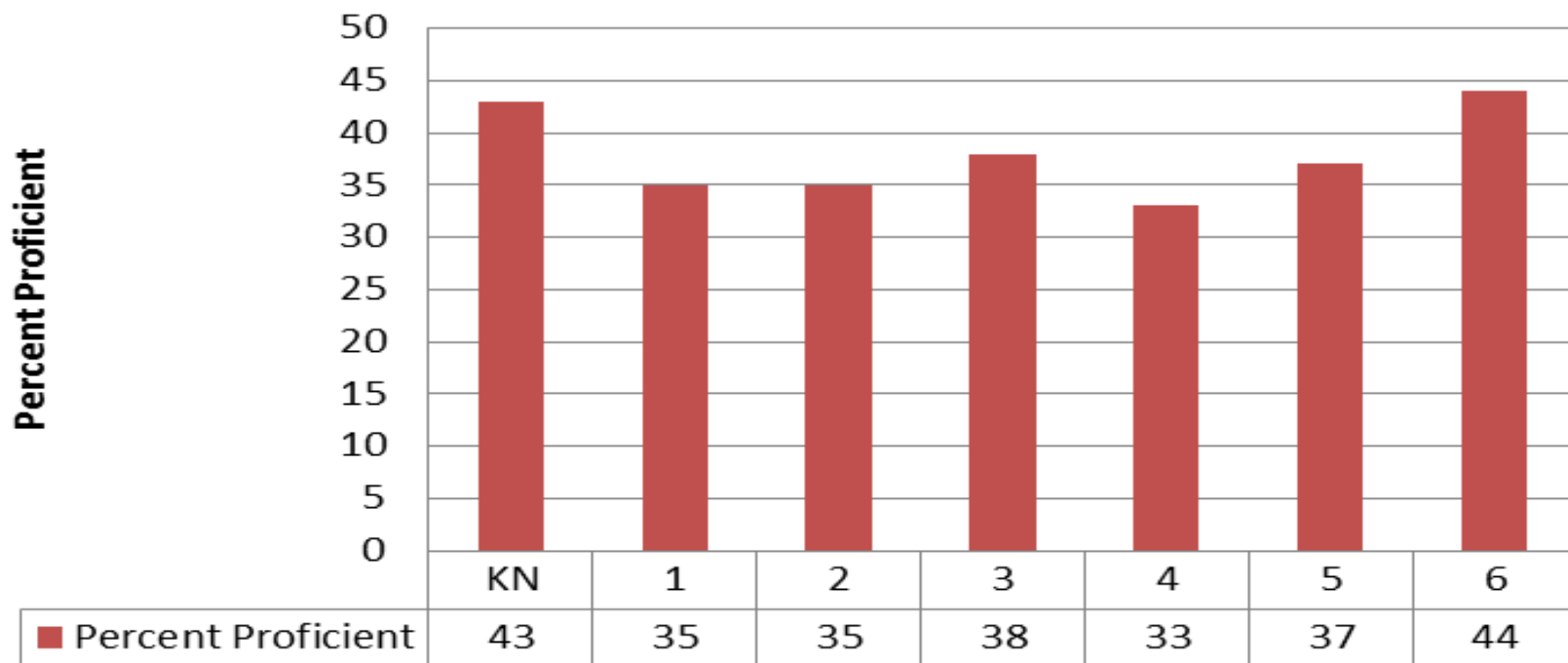
Elementary First Quarter Academic Progress Report

- ✓ Reading Proficiency
- ✓ Interim Assessment Comparison
- ✓ Report Card Grades by grade level and subject
- ✓ Attendance
- ✓ Discipline Referrals



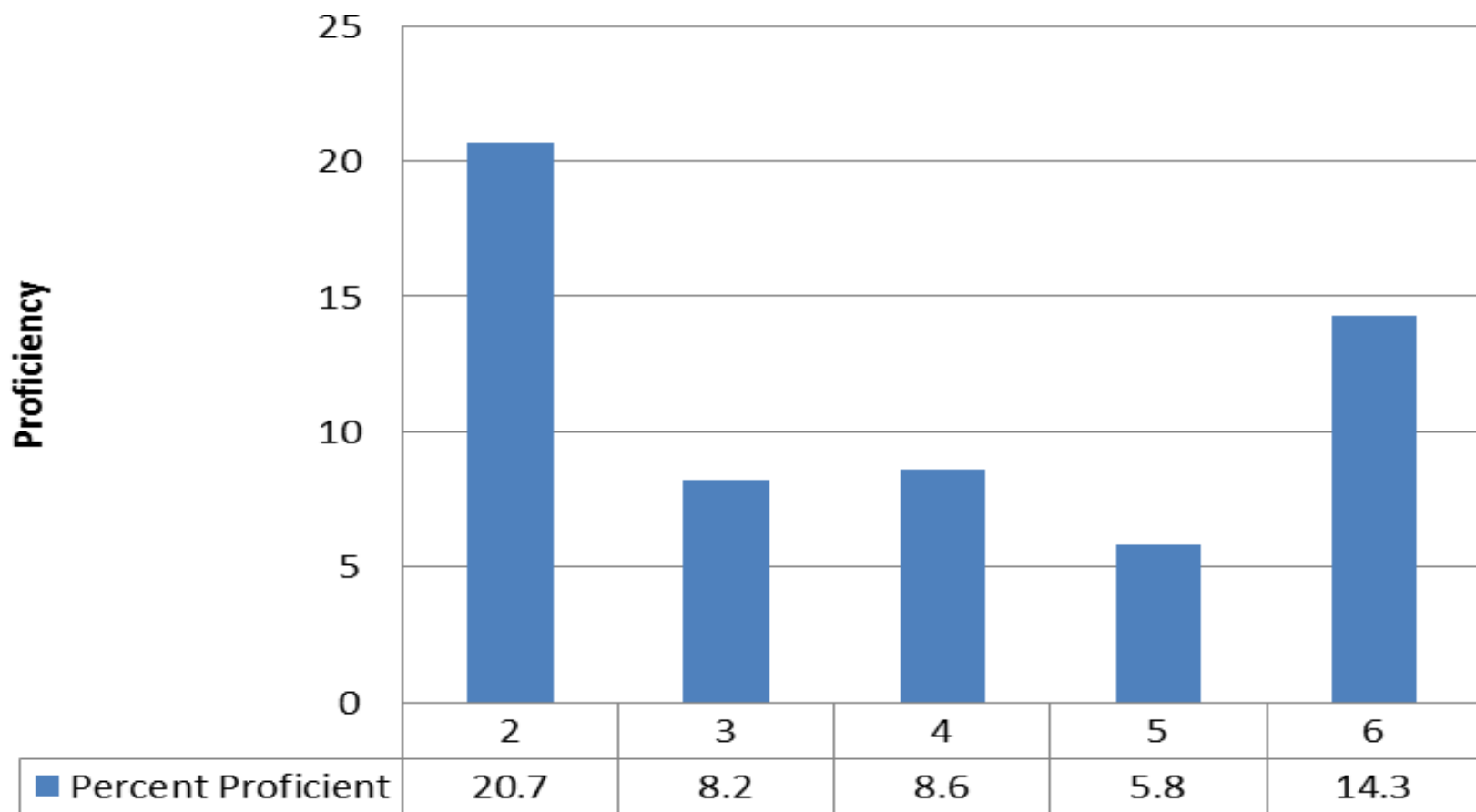
Elementary Benchmark Reading Assessments
Percent of Students
Meeting or Exceeding Grade Level Expectations
AIMSWEB Letter Naming Fluency K-1 and Oral Reading Fluency 2-6

AIMSWEB Data



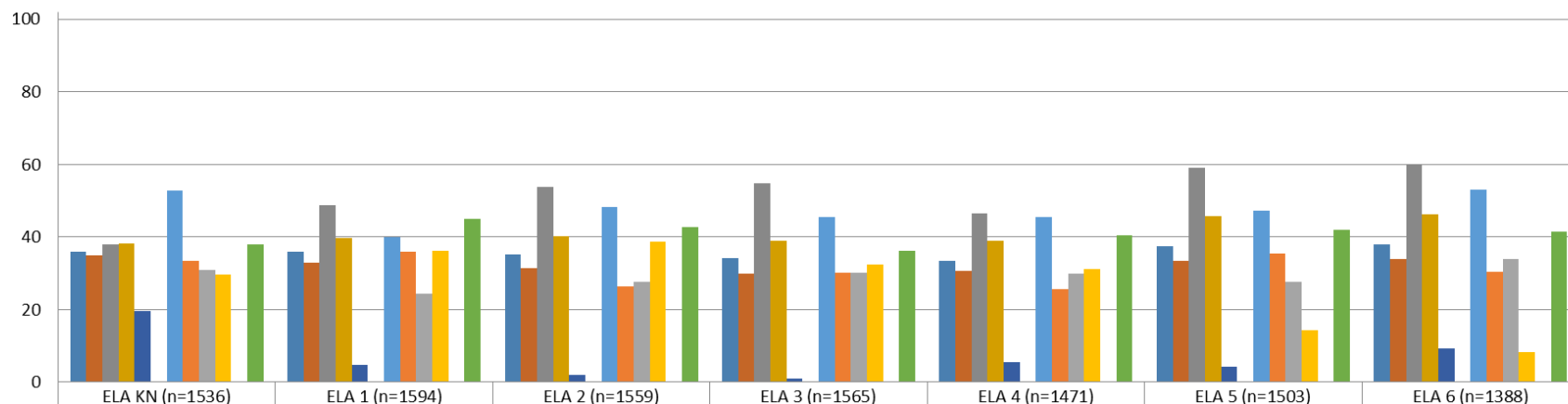


Elementary ELA Interim Assessments
Percent of Students
Meeting or Exceeding Grade Level Expectations
November 2014





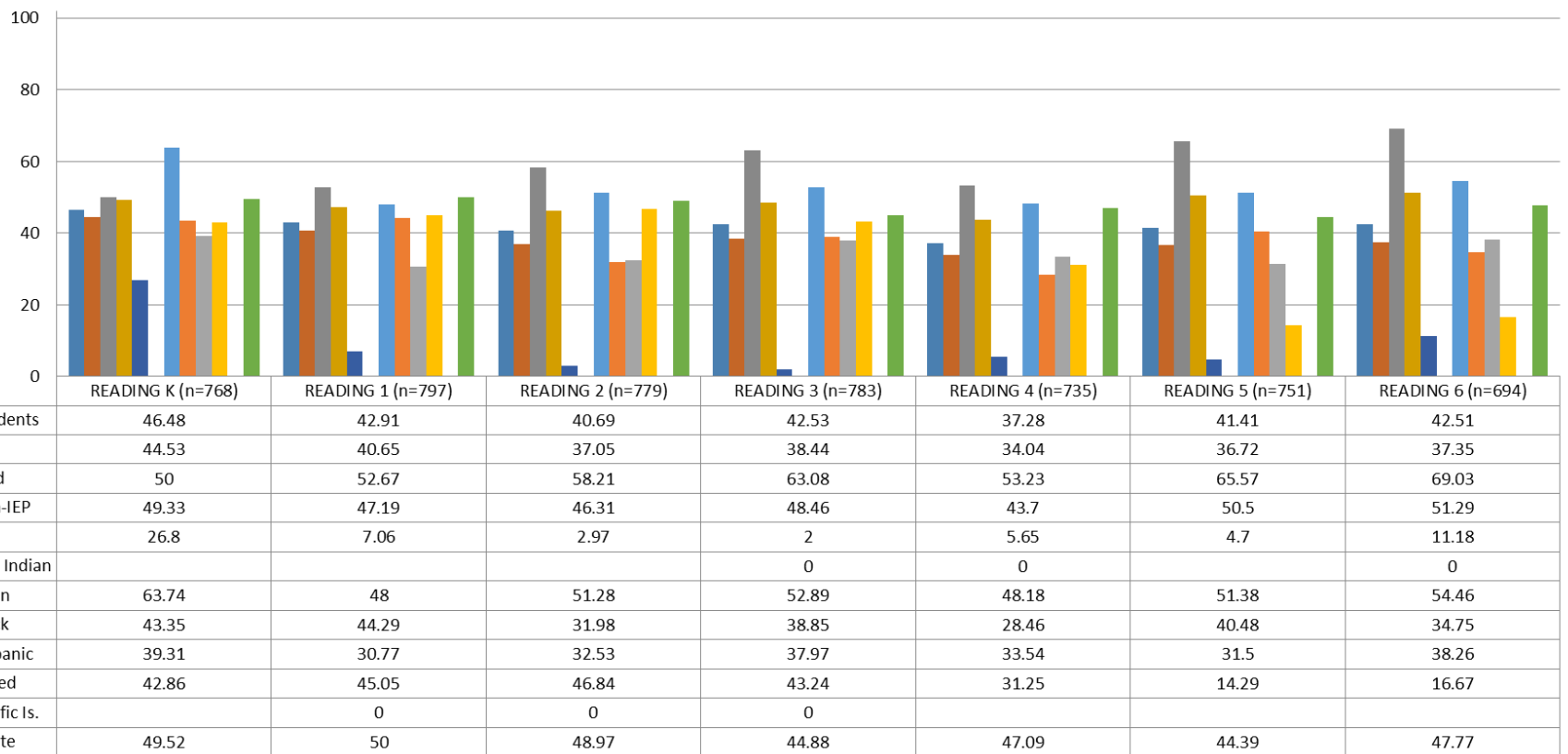
Kindergarten – Sixth Grade 1st Quarter Percent of Students Meeting or Exceeding Grade Level Expectations In English Language Arts



	ELA KN (n=1536)	ELA 1 (n=1594)	ELA 2 (n=1559)	ELA 3 (n=1565)	ELA 4 (n=1471)	ELA 5 (n=1503)	ELA 6 (n=1388)
Pct Of Students	35.94	35.88	35.21	34.12	33.38	37.52	38.04
Pct Of FR	34.82	32.92	31.32	30.02	30.72	33.36	33.82
Pct Of Paid	37.96	48.67	53.9	54.83	46.56	59.02	59.73
Pct Of non-IEP	38.3	39.61	40.1	38.97	39	45.73	46.13
Pct Of IEP	19.59	4.71	2	1	5.65	4.36	9.21
Pct of Am. Indian				0	0		0
Pct of Asian	52.75	40	48.29	45.45	45.5	47.25	53.12
Pct of Black	33.5	35.95	26.29	30.25	25.58	35.48	30.51
Pct of Hispanic	30.92	24.36	27.71	30.06	29.84	27.56	33.91
Pct of Mixed	29.67	36.26	38.61	32.43	31.25	14.29	8.33
Pct of Pacific Is.		0	0	0			
Pct of White	37.86	45	42.78	36.1	40.48	42.06	41.52

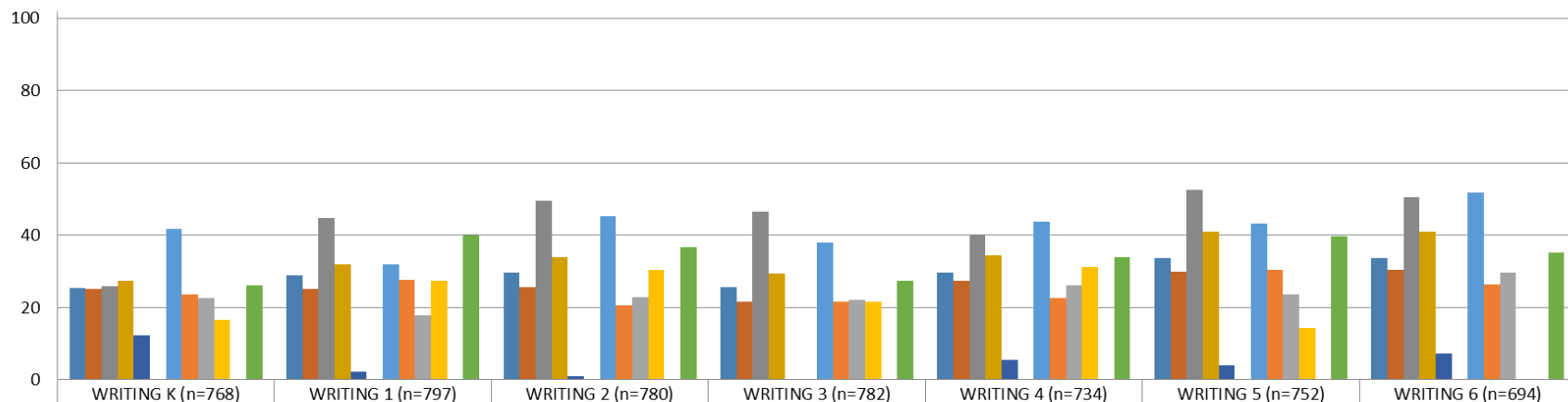


Kindergarten – Sixth Grade 1st Quarter Percent of Students Meeting or Exceeding Grade Level Expectations In Reading





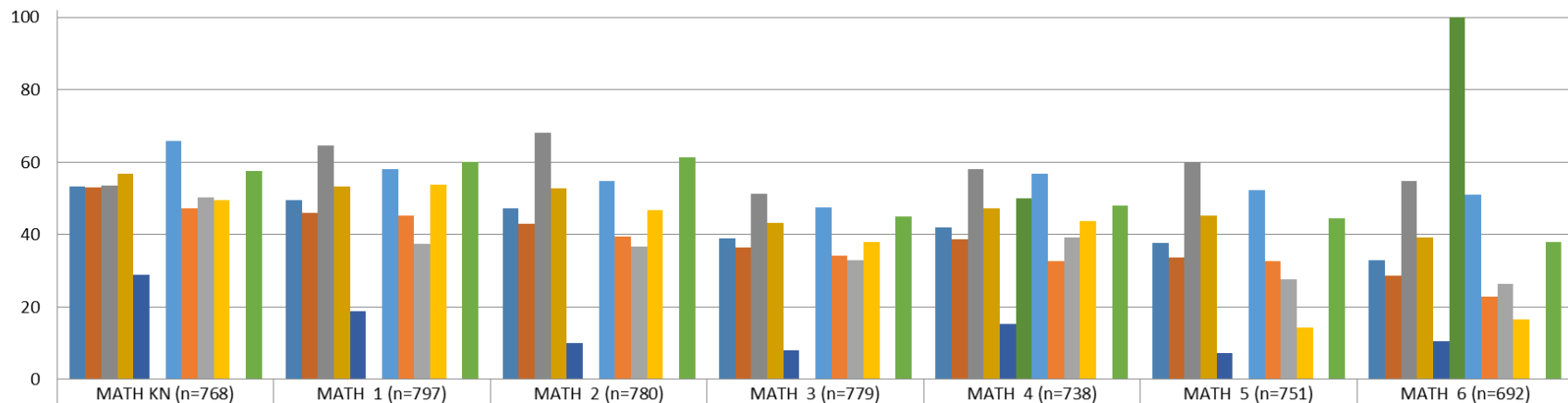
Kindergarten – Sixth Grade 1st Quarter Percent of Students Meeting or Exceeding Grade Level Expectations In Writing



	WRITING K (n=768)	WRITING 1 (n=797)	WRITING 2 (n=780)	WRITING 3 (n=782)	WRITING 4 (n=734)	WRITING 5 (n=752)	WRITING 6 (n=694)
Pct Of Students	25.39	28.86	29.74	25.7	29.56	33.64	33.57
Pct Of FR	25.1	25.19	25.58	21.59	27.5	30	30.29
Pct Of Paid	25.91	44.67	49.63	46.51	39.84	52.46	50.44
Pct Of non-IEP	27.27	32.02	34.02	29.47	34.43	40.96	40.96
Pct Of IEP	12.37	2.35	0.99	0	5.65	4.03	7.24
Pct of Am. Indian				0	0		0
Pct of Asian	41.76	32	45.3	38.02	43.64	43.12	51.79
Pct of Black	23.65	27.62	20.63	21.62	22.69	30.51	26.27
Pct of Hispanic	22.54	17.95	22.89	22.15	26.11	23.62	29.57
Pct of Mixed	16.48	27.47	30.38	21.62	31.25	14.29	0
Pct of Pacific Is.		0	0	0			
Pct of White	26.19	40	36.6	27.32	33.86	39.72	35.27



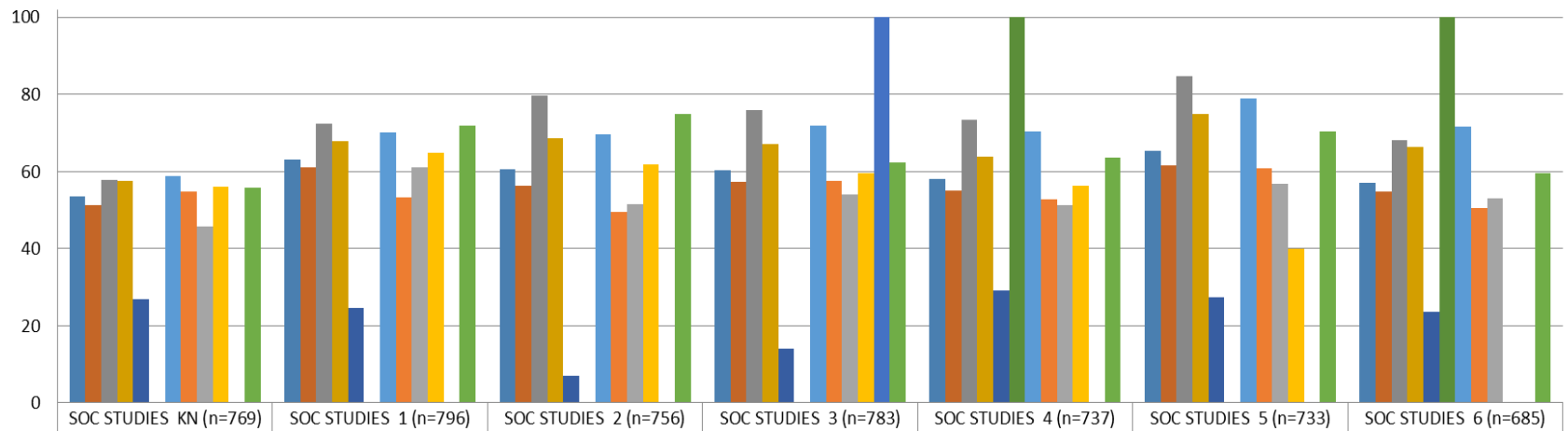
Kindergarten – Sixth Grade 1st Quarter Percent of Students Meeting or Exceeding Grade Level Expectations In Math



	MATH KN (n=768)	MATH 1 (n=797)	MATH 2 (n=780)	MATH 3 (n=779)	MATH 4 (n=738)	MATH 5 (n=751)	MATH 6 (n=692)
Pct Of Students	53.26	49.56	47.31	38.9	41.87	37.82	32.95
Pct Of FR	53.04	46.06	42.95	36.46	38.6	33.55	28.67
Pct Of Paid	53.65	64.67	68.15	51.16	58.06	59.84	54.87
Pct Of non-IEP	56.78	53.23	52.79	43.32	47.23	45.35	39.26
Pct Of IEP	28.87	18.82	10	8.16	15.32	7.38	10.53
Pct of Am. Indian				0	50		100
Pct of Asian	65.93	58	54.7	47.5	56.76	52.29	50.89
Pct of Black	47.29	45.24	39.46	34.24	32.57	32.65	22.98
Pct of Hispanic	50.29	37.44	36.75	32.91	39.24	27.56	26.32
Pct of Mixed	49.45	53.85	46.84	37.84	43.75	14.29	16.67
Pct of Pacific Is.		0	0	0			
Pct of White	57.62	60	61.34	44.88	47.89	44.39	37.95



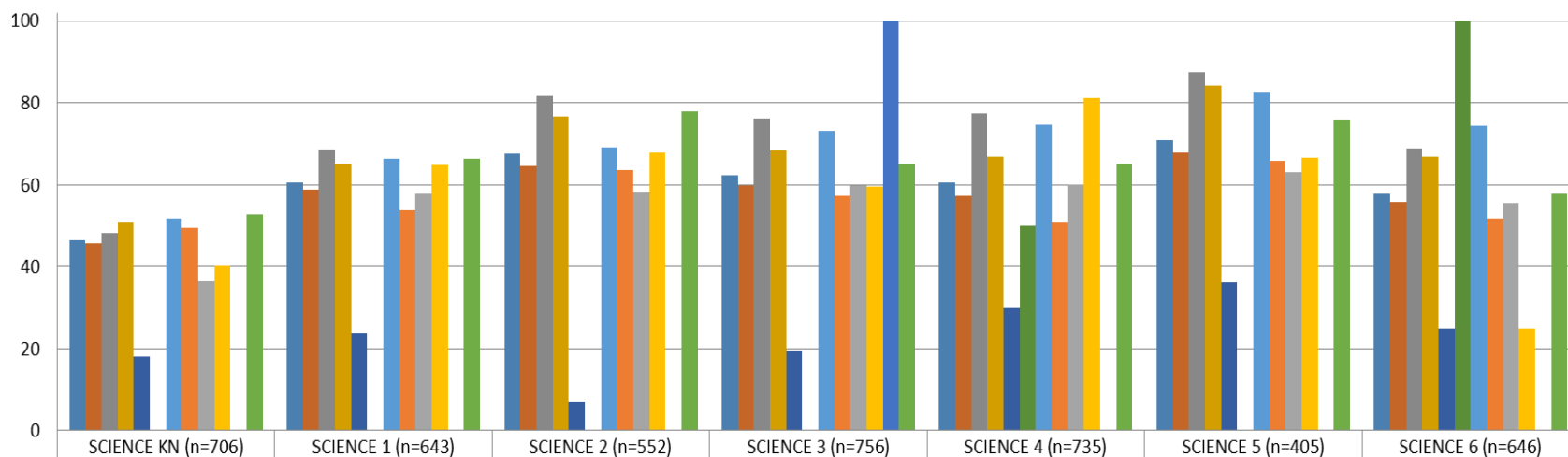
Kindergarten – Sixth Grade 1st Quarter Percent of Students Meeting or Exceeding Grade Level Expectations In Social Studies



	SOC STUDIES KN (n=769)	SOC STUDIES 1 (n=796)	SOC STUDIES 2 (n=756)	SOC STUDIES 3 (n=783)	SOC STUDIES 4 (n=737)	SOC STUDIES 5 (n=733)	SOC STUDIES 6 (n=685)
Pct Of Students	53.58	63.19	60.45	60.41	58.07	65.35	56.93
Pct Of FR	51.21	61.05	56.41	57.34	54.98	61.63	54.72
Pct Of Paid	57.82	72.48	79.55	75.97	73.39	84.75	68.14
Pct Of non-IEP	57.44	67.79	68.49	67.2	63.95	74.79	66.42
Pct Of IEP	26.8	24.71	7.07	14	29.03	27.4	23.68
Pct of Am. Indian				0	100		100
Pct of Asian	58.7	70	69.64	71.9	70.27	78.85	71.56
Pct of Black	54.68	53.33	49.54	57.53	52.87	60.76	50.43
Pct of Hispanic	45.66	61.03	51.53	54.09	51.27	56.91	53.1
Pct of Mixed	56.04	64.84	61.84	59.46	56.25	40	0
Pct of Pacific Is.		0	0	100			
Pct of White	55.71	71.86	75	62.44	63.49	70.42	59.64



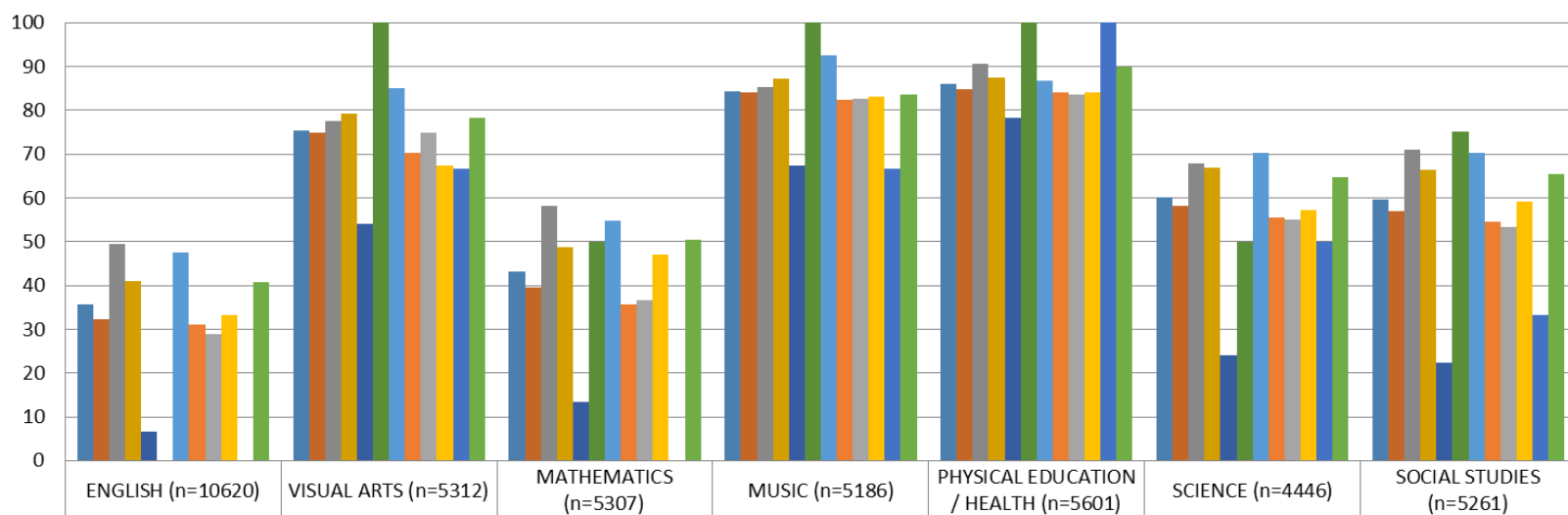
Kindergarten – Sixth Grade 1st Quarter Percent of Students Meeting or Exceeding Grade Level Expectations In Science



	SCIENCE KN (n=706)	SCIENCE 1 (n=643)	SCIENCE 2 (n=552)	SCIENCE 3 (n=756)	SCIENCE 4 (n=735)	SCIENCE 5 (n=405)	SCIENCE 6 (n=646)
Pct Of Students	46.6	60.5	67.57	62.43	60.68	70.86	57.89
Pct Of FR	45.73	58.71	64.71	59.78	57.28	67.74	55.68
Pct Of Paid	48.19	68.7	81.72	76.23	77.42	87.5	68.81
Pct Of non-IEP	50.73	65.03	76.67	68.48	66.94	84.25	66.8
Pct Of IEP	17.98	23.94	6.94	19.35	29.84	36.28	24.82
Pct of Am. Indian				0	50		100
Pct of Asian	51.72	66.25	69.14	73.11	74.55	82.76	74.29
Pct of Black	49.48	53.85	63.46	57.37	50.77	65.81	51.8
Pct of Hispanic	36.36	57.72	58.41	59.87	60.13	63.08	55.66
Pct of Mixed	40.23	64.86	67.92	59.46	81.25	66.67	25
Pct of Pacific Is.		0		100			
Pct of White	52.69	66.24	77.85	65.13	65.08	75.81	57.69



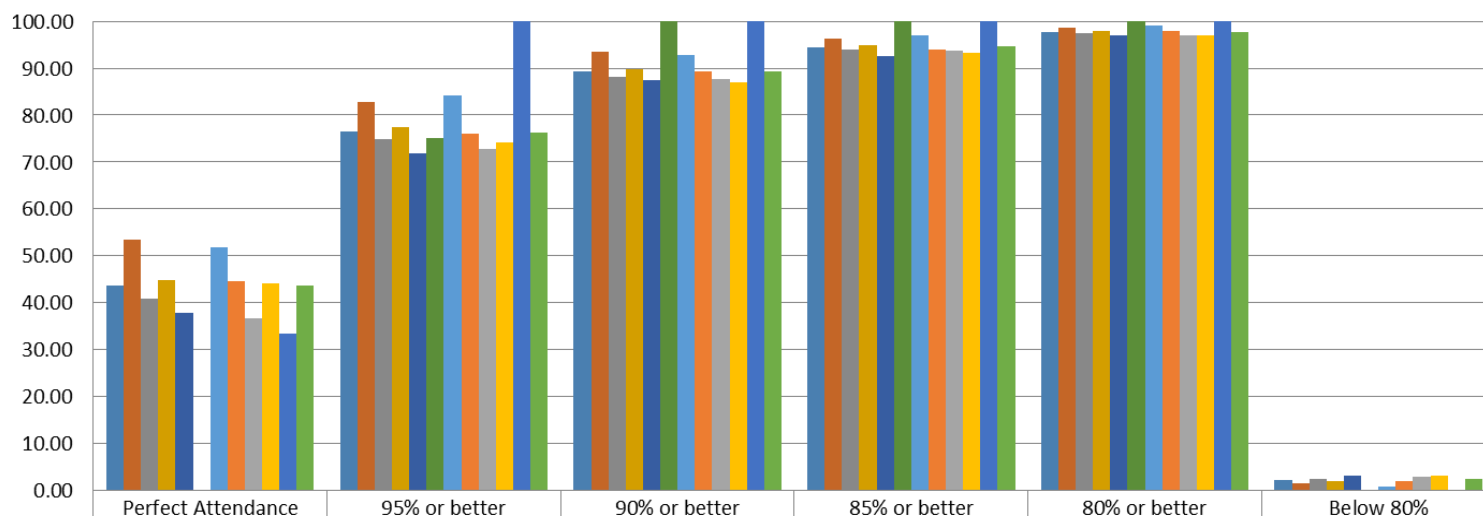
Kindergarten – Sixth Grade 1st Quarter Percent of Students Meeting or Exceeding Grade Level Expectations Art, Music, PE



	ENGLISH (n=10620)	VISUAL ARTS (n=5312)	MATHEMATICS (n=5307)	MUSIC (n=5186)	PHYSICAL EDUCATION / HEALTH (n=5601)	SCIENCE (n=4446)	SOCIAL STUDIES (n=5261)
Pct Of Students	35.71	75.4	43.28	84.27	85.98	60.12	59.74
Pct Of FR	32.33	74.86	39.62	84.01	84.87	58.21	56.98
Pct Of Paid	49.45	77.58	58.17	85.29	90.48	67.92	70.96
Pct Of non-IEP	40.92	79.26	48.62	87.26	87.37	66.86	66.46
Pct Of IEP	6.63	54	13.42	67.35	78.37	23.93	22.42
Pct of Am. Indian	0	100	50	100	100	50	75
Pct of Asian	47.44	85.01	54.74	92.42	86.8	70.2	70.36
Pct of Black	31.1	70.33	35.75	82.37	84.14	55.39	54.49
Pct of Hispanic	28.88	74.91	36.63	82.67	83.68	55.12	53.36
Pct of Mixed	33.33	67.48	47.09	83.12	83.94	57.3	59.19
Pct of Pacific Is.	0	66.67	0	66.67	100	50	33.33
Pct of White	40.81	78.33	50.31	83.57	89.78	64.74	65.31



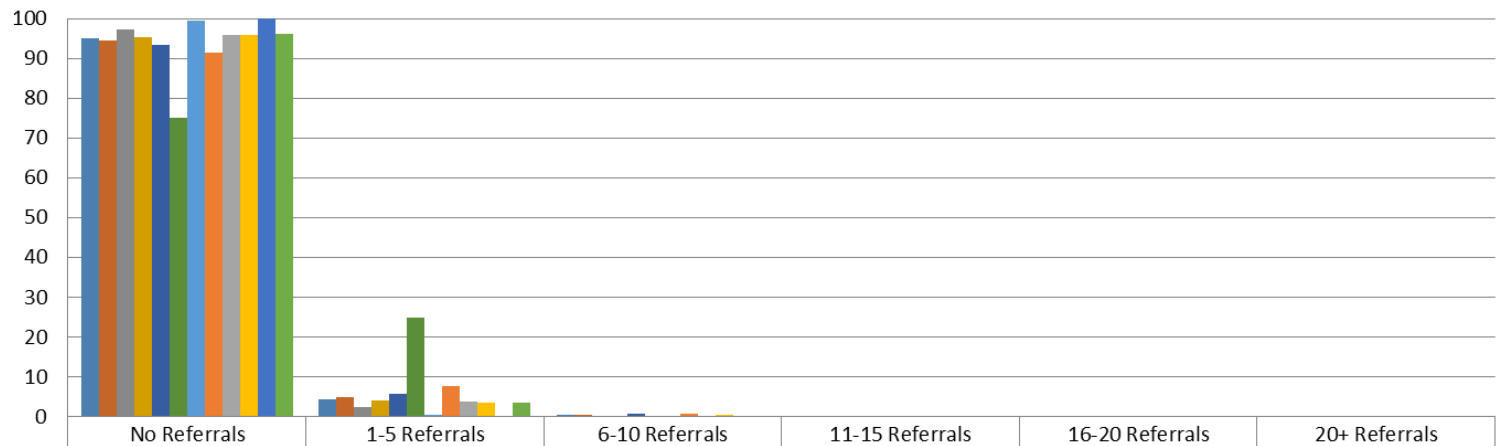
K-6 Attendance First Quarter Data 2014-2015



	Perfect Attendance	95% or better	90% or better	85% or better	80% or better	Below 80%
Pct of Students (n=5654)	43.72	76.57	89.35	94.5	97.81	2.19
Pct of Paid (n=1267)	53.35	82.79	93.45	96.29	98.58	1.42
Pct of F/R (n=4387)	40.94	74.77	88.17	93.98	97.58	2.42
Pct of Non-IEP (n=4809)	44.77	77.4	89.69	94.82	97.96	2.04
Pct of IEP (n=845)	37.75	71.83	87.46	92.66	96.92	3.08
Pct of Race: Am. Indian (n=4)	0	75	100	100	100	0
Pct of Race: Asian (n=829)	51.75	84.08	92.88	97.1	99.16	0.84
Pct of Race: Black (n=1773)	44.5	76.14	89.34	93.91	97.97	2.03
Pct of Race: Hispanic (n=1161)	36.78	72.78	87.68	93.63	97.07	2.93
Pct of Race: Mixed (n=360)	44.17	74.17	86.94	93.33	96.94	3.06
Pct of Race: Pacific Is. (n=3)	33.33	100	100	100	100	0
Pct of Race: White (n=1524)	43.77	76.38	89.24	94.69	97.64	2.36



K-6 Discipline Referrals First Quarter Data 2014-2015



	No Referrals	1-5 Referrals	6-10 Referrals	11-15 Referrals	16-20 Referrals	20+ Referrals
Pct of All (n=5661)	95.09	4.43	0.37	0.04	0.04	0.04
Pct of FR (n=4384)	94.43	5	0.43	0.05	0.05	0.05
Pct of Paid (n=1277)	97.34	2.51	0.16	0	0	0
Pct of non-IEP (n=4815)	95.41	4.2	0.31	0.02	0.04	0.02
Pct of IEP (n=845)	93.37	5.68	0.71	0.12	0	0.12
Pct of Race: Am. Indian (n=4)	75	25	0	0	0	0
Pct of Race: Asian (n=834)	99.4	0.6	0	0	0	0
Pct of Race: Black (n=1772)	91.42	7.67	0.68	0.06	0.11	0.06
Pct of Race: Hispanic (n=1160)	95.95	3.71	0.26	0	0	0.09
Pct of Race: Mixed (n=361)	95.84	3.6	0.55	0	0	0
Pct of Race: Pacific Is. (n=3)	100	0	0	0	0	0
Pct of Race: White (n=1526)	96.26	3.41	0.26	0.07	0	0

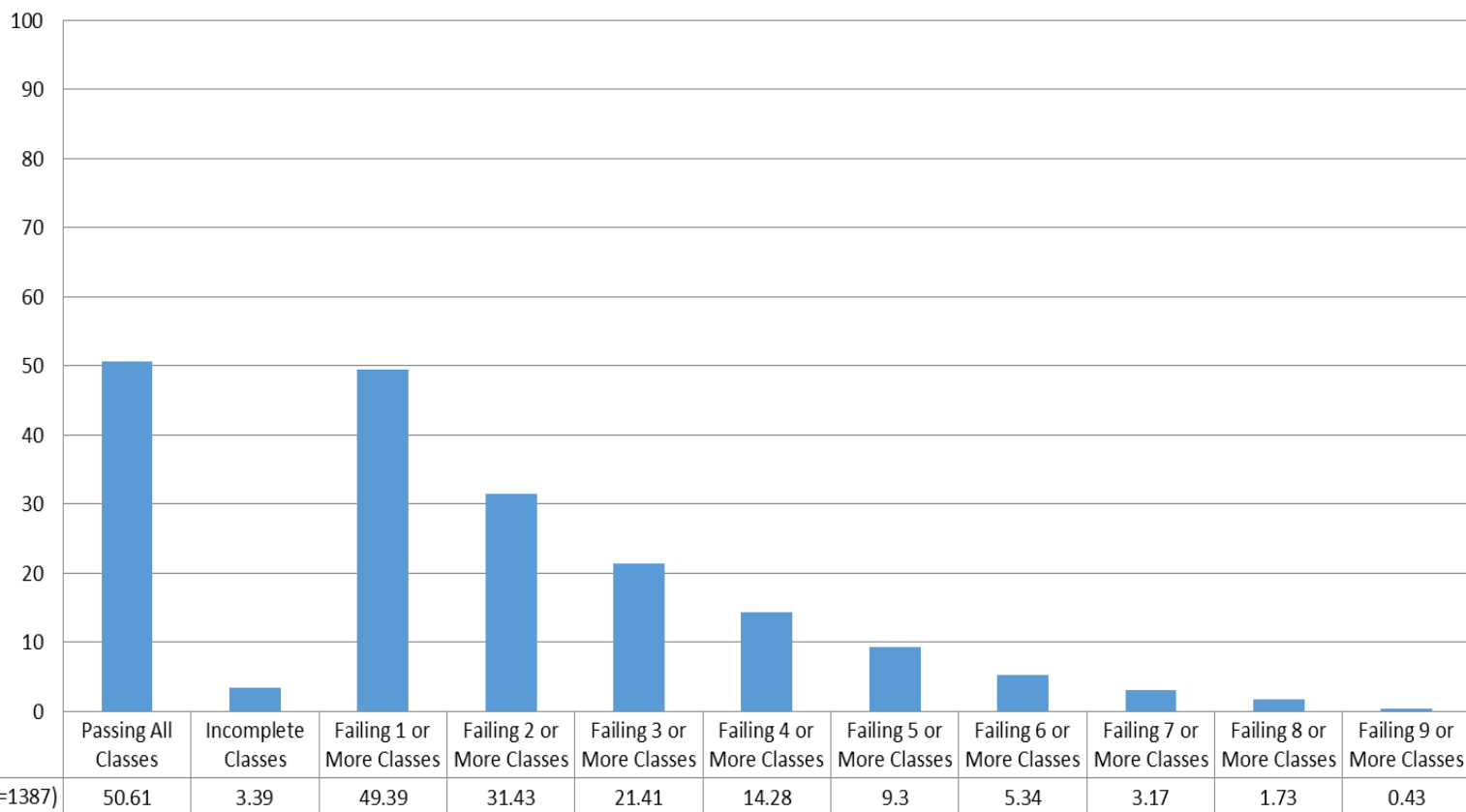


Middle School 1st Quarter Academic Progress Report

- ✓ Report Card Grades by subject
- ✓ Attendance
- ✓ Discipline Referrals

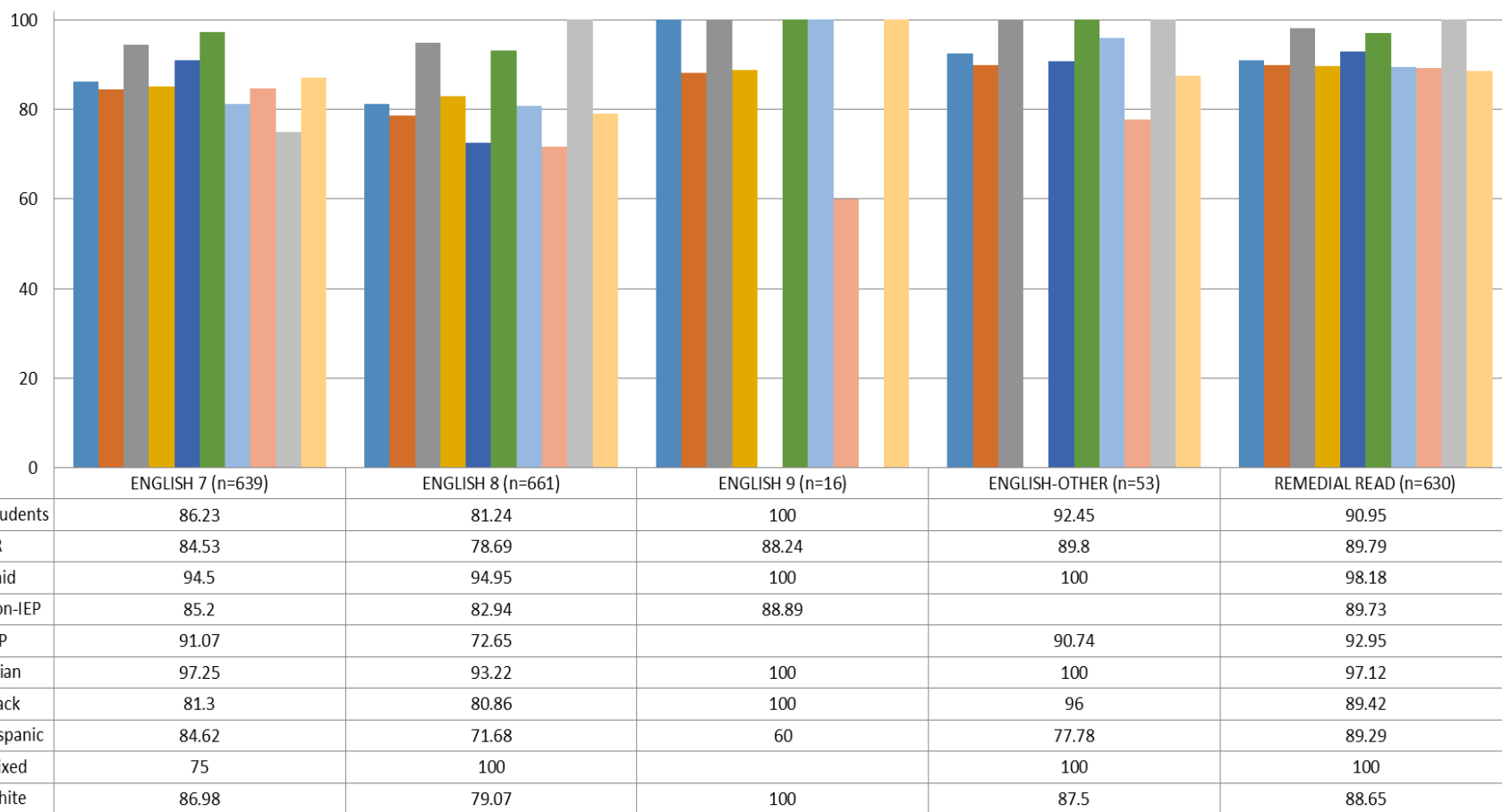


Middle School Students 1st Quarter Percent of Students Passing Classes



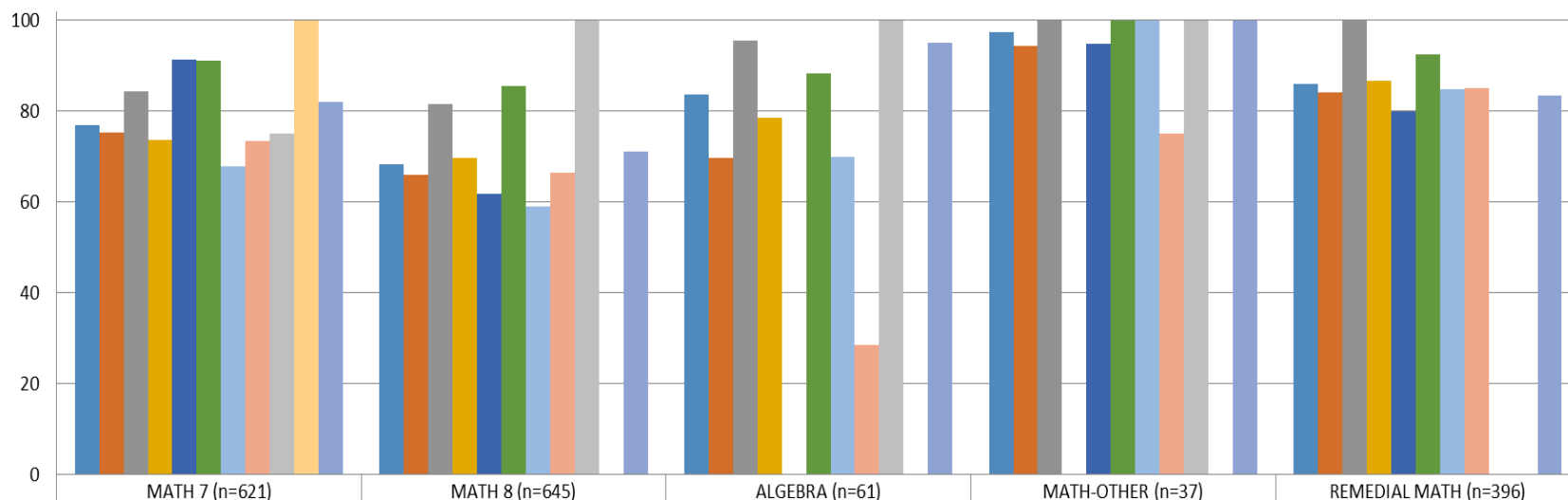


Middle School Students 1st Quarter Percent Passing by English Course





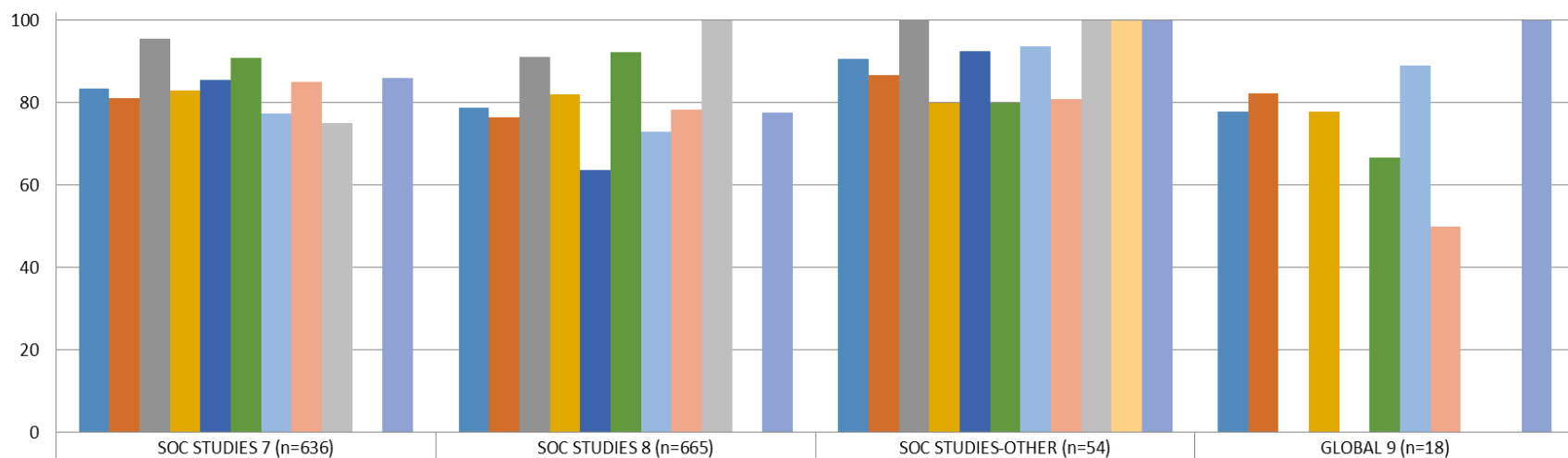
Middle School Students 1st Quarter Percent Passing by Math Course



	MATH 7 (n=621)	MATH 8 (n=645)	ALGEBRA (n=61)	MATH-OTHER (n=37)	REMEDIAL MATH (n=396)
Pct Of Students	76.81	68.22	83.61	97.3	85.86
Pct Of FR	75.34	66	69.77	94.44	84.05
Pct Of Paid	84.31	81.52	95.45	100	100
Pct Of non-IEP	73.57	69.71	78.46		86.71
Pct Of IEP	91.23	61.67		94.74	80
Pct of Asian	91.18	85.59	88.24	100	92.54
Pct of Black	67.84	59.04	70	100	84.85
Pct of Hispanic	73.39	66.37	28.57	75	84.93
Pct of Mixed	75	100	100	100	
Pct of Pacific Is.	100				
Pct of White	82.02	71.18	95	100	83.52



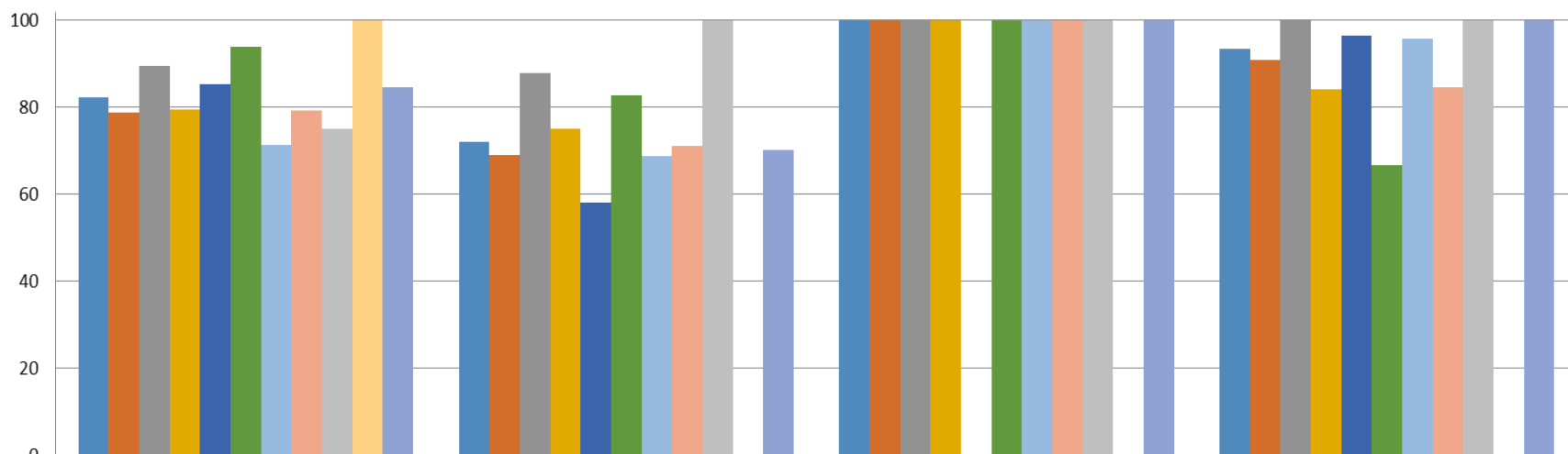
Middle School Students 1st Quarter Percent Passing by Social Studies Course



	SOC STUDIES 7 (n=636)	SOC STUDIES 8 (n=665)	SOC STUDIES-OTHER (n=54)	GLOBAL 9 (n=18)
Pct Of Students	83.49	78.8	90.74	77.78
Pct Of FR	81.02	76.5	86.67	82.35
Pct Of Paid	95.41	91	100	0
Pct Of non-IEP	83.05	82.02	80	77.78
Pct Of IEP	85.59	63.64	92.5	
Pct of Asian	90.83	92.37	80	66.67
Pct of Black	77.39	72.97	93.75	88.89
Pct of Hispanic	85	78.38	80.95	50
Pct of Mixed	75	100	100	
Pct of Pacific Is.			100	
Pct of White	86.01	77.71	100	100



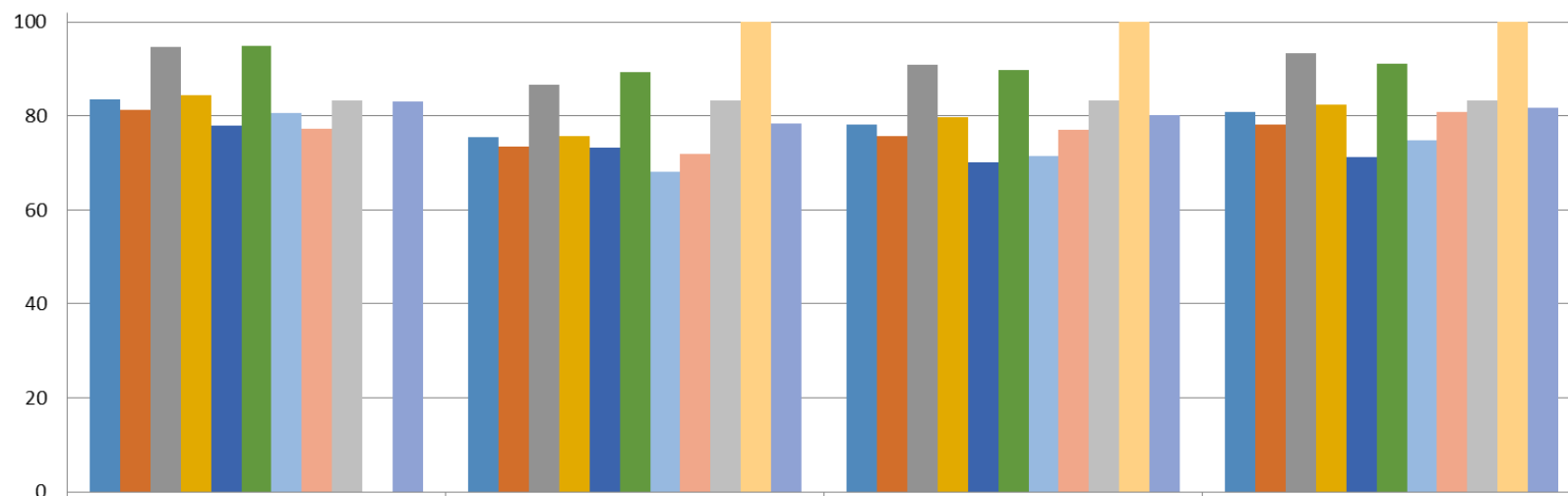
Middle School Students 1st Quarter Percent Passing by Science Course



	SCIENCE 7 (n=642)	SCIENCE 8 (n=609)	BIOLOGY (n=60)	SCIENCE-OTHER (n=46)
Pct Of Students	82.24	71.92	100	93.48
Pct Of FR	78.7	69.04	100	90.91
Pct Of Paid	89.57	87.78	100	100
Pct Of non-IEP	79.51	75.15	100	84.21
Pct Of IEP	85.37	57.98		96.43
Pct of Asian	93.81	82.65	100	66.67
Pct of Black	71.3	68.7	100	95.65
Pct of Hispanic	79.28	71.03	100	84.62
Pct of Mixed	75	100	100	100
Pct of Pacific Is.	100			
Pct of White	84.69	70.25	100	100



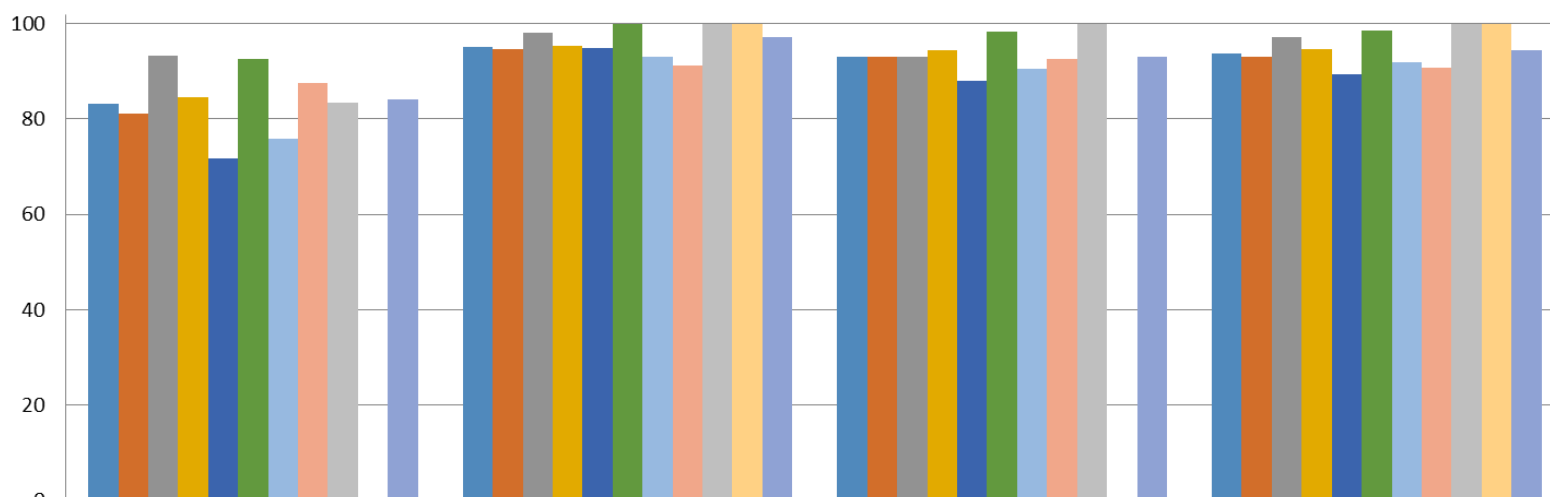
Middle School Students 1st Quarter Percent Passing by Department



	ENGLISH (n=1490)	MATHEMATICS (n=1676)	SCIENCE (n=1291)	SOCIAL STUDIES (n=1307)
Pct Of Students	83.42	75.42	78.16	80.72
Pct Of FR	81.38	73.42	75.67	78.26
Pct Of Paid	94.74	86.61	90.95	93.4
Pct Of non-IEP	84.34	75.76	79.63	82.49
Pct Of IEP	77.93	73.31	70.15	71.22
Pct of Asian	94.96	89.33	89.7	91.06
Pct of Black	80.57	68.14	71.46	74.79
Pct of Hispanic	77.31	71.97	77.06	80.73
Pct of Mixed	83.33	83.33	83.33	83.33
Pct of Pacific Is.		100	100	100
Pct of White	83.08	78.48	80.17	81.82



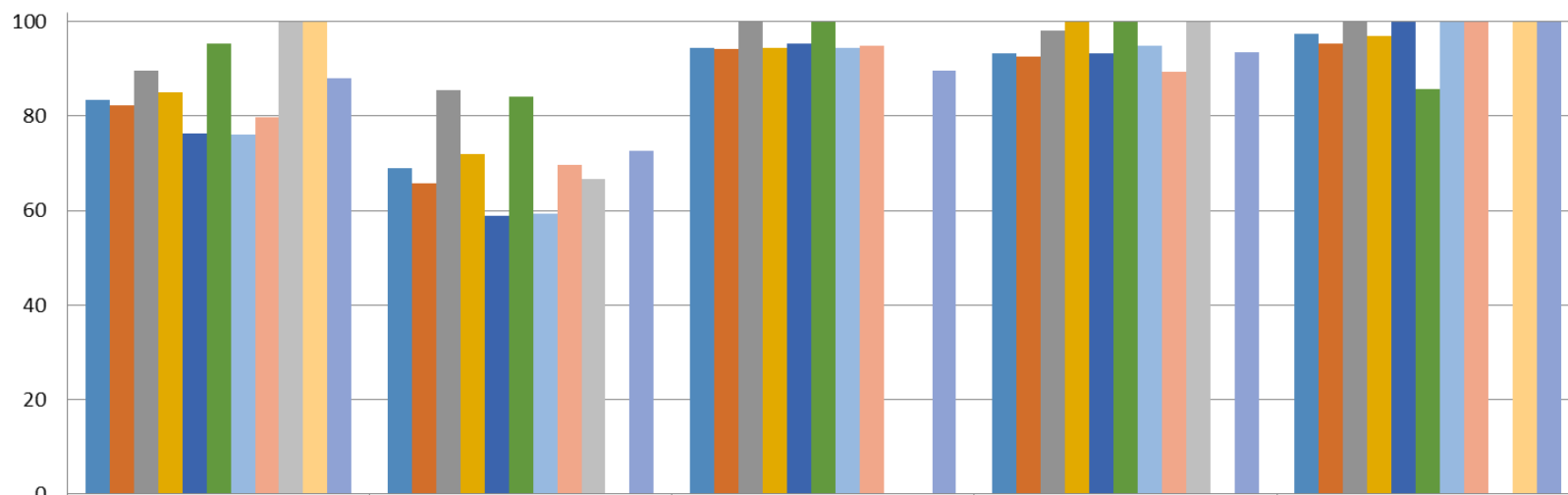
Middle School Students 1st Quarter Percent Passing by Department



	FOREIGN LANGUAGE (n=1108)	PHYSICAL EDUCATION / HEALTH (n=1354)	VISUAL ARTS (n=682)	MUSIC (n=815)
Pct Of Students	83.21	95.2	93.11	93.74
Pct Of FR	81.11	94.65	93.13	92.99
Pct Of Paid	93.23	98.13	93.02	97.24
Pct Of non-IEP	84.62	95.28	94.44	94.57
Pct Of IEP	71.67	94.87	88.03	89.47
Pct of Asian	92.57	100	98.4	98.58
Pct of Black	75.93	93.16	90.59	91.9
Pct of Hispanic	87.5	91.34	92.62	90.77
Pct of Mixed	83.33	100	100	100
Pct of Pacific Is.		100		100
Pct of White	84.11	97.28	93.18	94.47



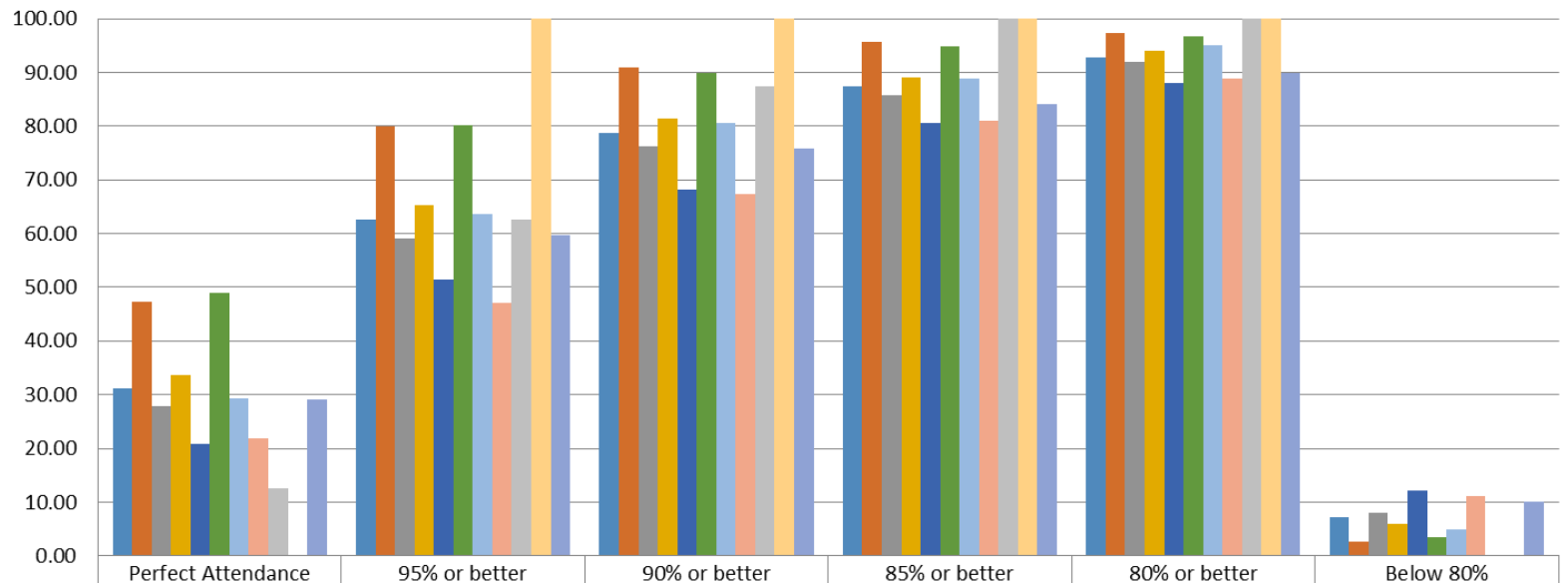
Middle School Students 1st Quarter Percent Passing by Department



	TECHNOLOGY EDUCATION (n=661)	FAMILY & CONSUMER SCIENCE (n=624)	REMEDIAL READING (n=328)	SPECIAL NEEDS (n=482)	ESL (n=40)
Pct Of Students	83.51	68.91	94.51	93.36	97.5
Pct Of FR	82.31	65.84	94.16	92.72	95.45
Pct Of Paid	89.72	85.57	100	98.21	100
Pct Of non-IEP	85.13	71.93	94.39	100	96.97
Pct Of IEP	76.42	58.74	95.35	93.33	100
Pct of Asian	95.41	84.11	100	100	85.71
Pct of Black	76.13	59.35	94.56	94.81	100
Pct of Hispanic	79.82	69.57	94.92	89.47	100
Pct of Mixed	100	66.67		100	
Pct of Pacific Is.	100				100
Pct of White	87.96	72.73	89.55	93.57	100



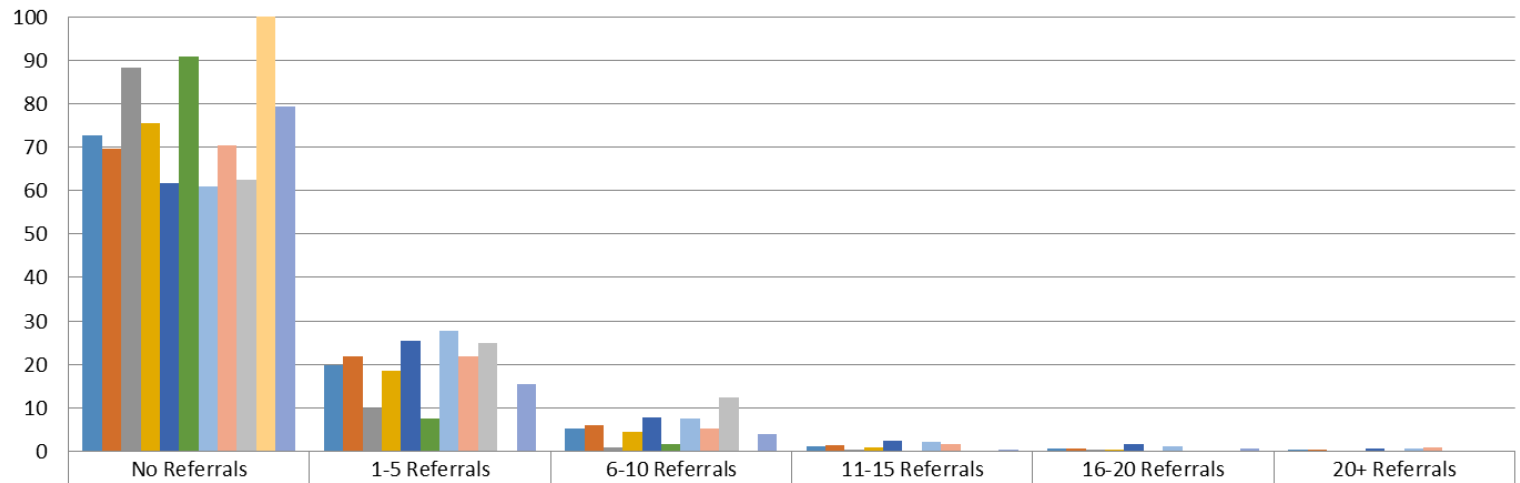
Grade 7 & 8 1st Quarter Attendance Data 2014-2015



	Perfect Attendance	95% or better	90% or better	85% or better	80% or better	Below 80%
Pct of Students (n=1396)	31.16	62.54	78.65	87.32	92.84	7.16
Pct of Paid (n=230)	47.39	80	90.87	95.65	97.39	2.61
Pct of F/R (n=1166)	27.96	59.09	76.24	85.68	91.94	8.06
Pct of Non-IEP (n=1114)	33.75	65.35	81.33	89.05	94.08	5.92
Pct of IEP (n=282)	20.92	51.42	68.09	80.5	87.94	12.06
Pct of Race: Asian (n=237)	48.95	80.17	89.87	94.94	96.62	3.38
Pct of Race: Black (n=523)	29.25	63.67	80.69	88.91	95.03	4.97
Pct of Race: Hispanic (n=242)	21.9	47.11	67.36	80.99	88.84	11.16
Pct of Race: Mixed (n=8)	12.5	62.5	87.5	100	100	0
Pct of Race: Pacific Is. (n=1)	0	100	100	100	100	0
Pct of Race: White (n=385)	29.09	59.74	75.84	84.16	89.87	10.13



Grade 7 & 8 1st Quarter Discipline Referral Data 2014-2015



	No Referrals	1-5 Referrals	6-10 Referrals	11-15 Referrals	16-20 Referrals	20+ Referrals
Pct of All (n=1396)	72.71	19.84	5.16	1.29	0.64	0.36
Pct of FR (n=1164)	69.59	21.82	6.01	1.46	0.69	0.43
Pct of Paid (n=232)	88.36	9.91	0.86	0.43	0.43	0
Pct of non-IEP (n=1116)	75.45	18.46	4.48	0.99	0.36	0.27
Pct of IEP (n=280)	61.79	25.36	7.86	2.5	1.79	0.71
Pct of Race: Asian (n=238)	90.76	7.56	1.68	0	0	0
Pct of Race: Black (n=521)	60.84	27.64	7.49	2.3	1.15	0.58
Pct of Race: Hispanic (n=243)	70.37	21.81	5.35	1.65	0	0.82
Pct of Race: Mixed (n=8)	62.5	25	12.5	0	0	0
Pct of Race: Pacific Is. (n=1)	100	0	0	0	0	0
Pct of Race: White (n=385)	79.22	15.58	3.9	0.52	0.78	0



High School 1st Quarter Academic Progress Report

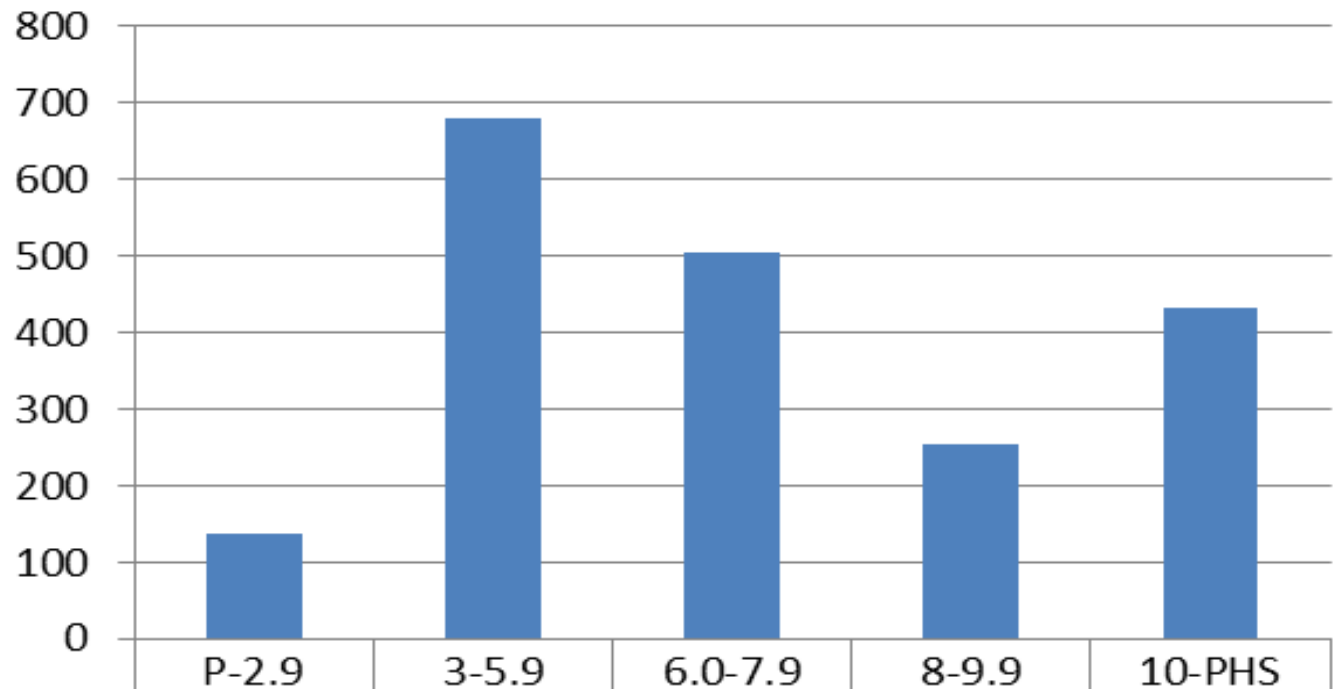
- ✓ STAR Reading Levels
- ✓ Report Card Grades by subject
- ✓ Attendance
- ✓ Discipline Referrals



High School 1st Quarter

Academic Progress Report – STAR Reading

STAR Reading Proficiency



Number of Students

138

678

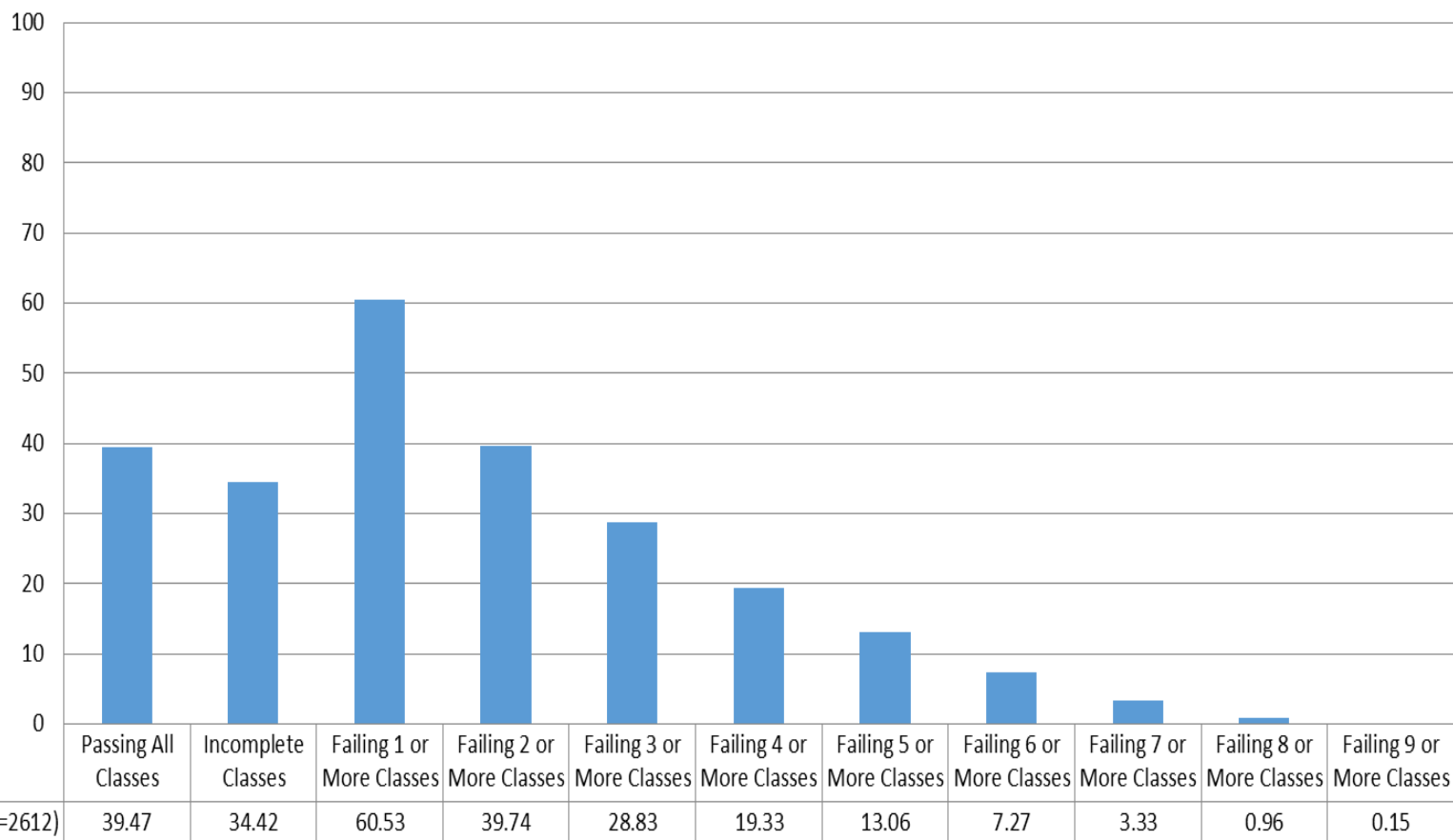
505

253

432

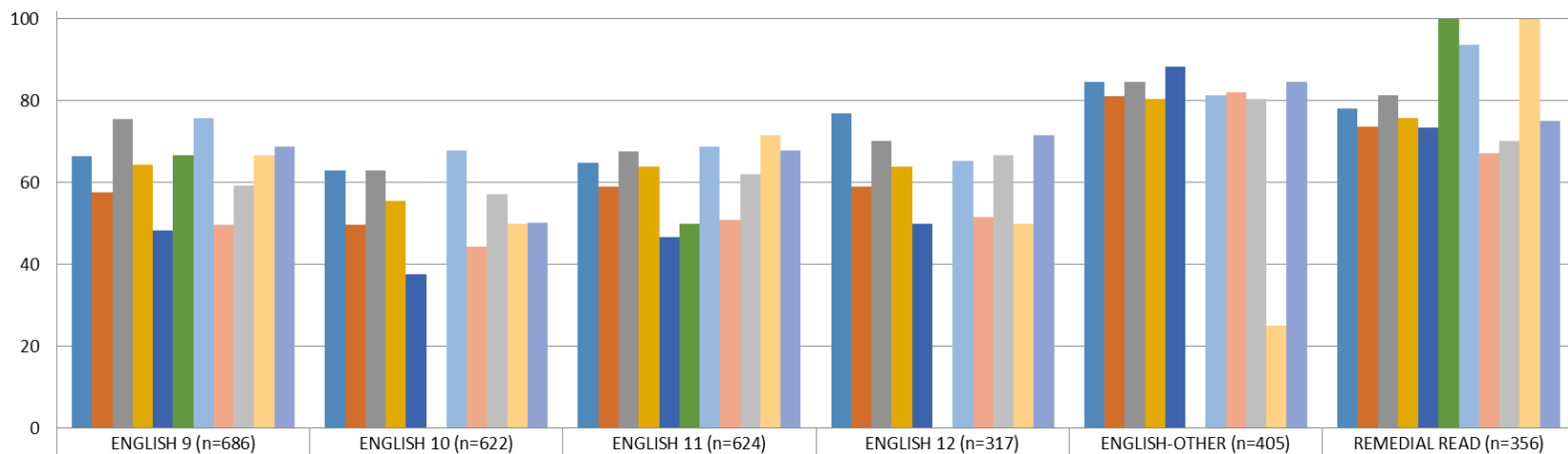


High School Students 1st Quarter Percent of Students Passing Classes





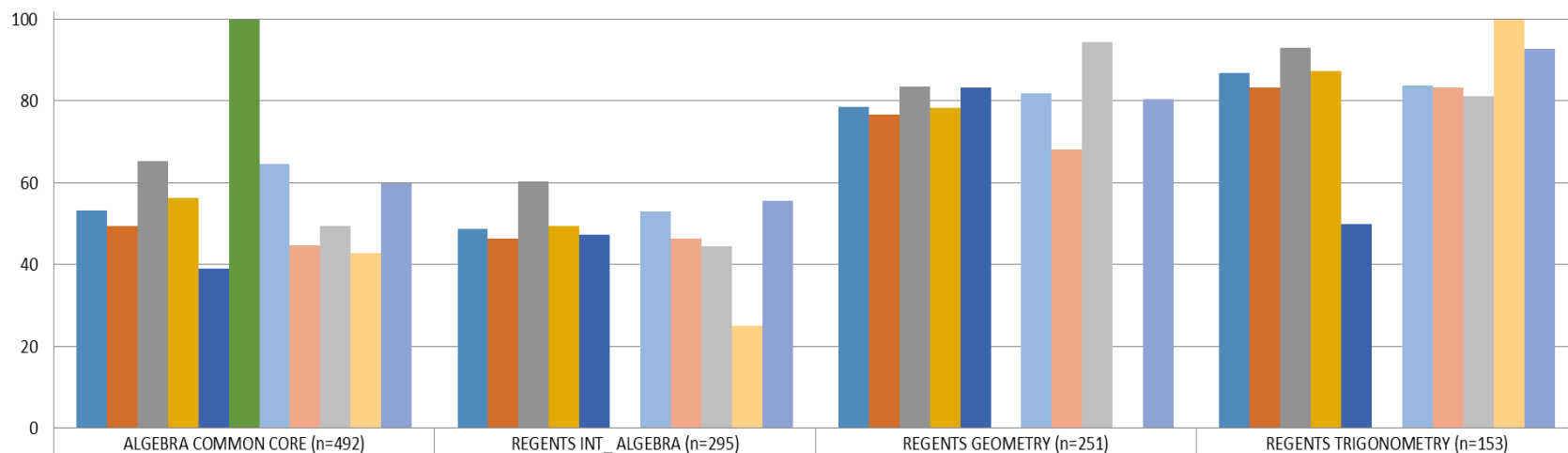
High School Students 1st Quarter Percent Passing by English Course



	ENGLISH 9 (n=686)	ENGLISH 10 (n=622)	ENGLISH 11 (n=624)	ENGLISH 12 (n=317)	ENGLISH-OTHER (n=405)	REMEDIAL READ (n=356)
Pct Of Students	66.33	62.86	64.9	76.97	84.69	78.09
Pct Of FR	57.5	49.57	58.9	59.02	81	73.54
Pct Of Paid	75.44	62.89	67.63	70.16	84.69	81.25
Pct Of non-IEP	64.29	55.5	63.86	63.76	80.41	75.84
Pct Of IEP	48.36	37.5	46.6	50	88.31	73.33
Pct of Am. Indian	66.67		50			100
Pct of Asian	75.74	67.86	68.64	65.15	81.25	93.75
Pct of Black	49.62	44.36	50.88	51.45	82.03	67.13
Pct of Hispanic	59.13	57.01	61.95	66.67	80.33	70.13
Pct of Mixed	66.67	50	71.43	50	25	100
Pct of White	68.69	50.22	67.86	71.65	84.62	75



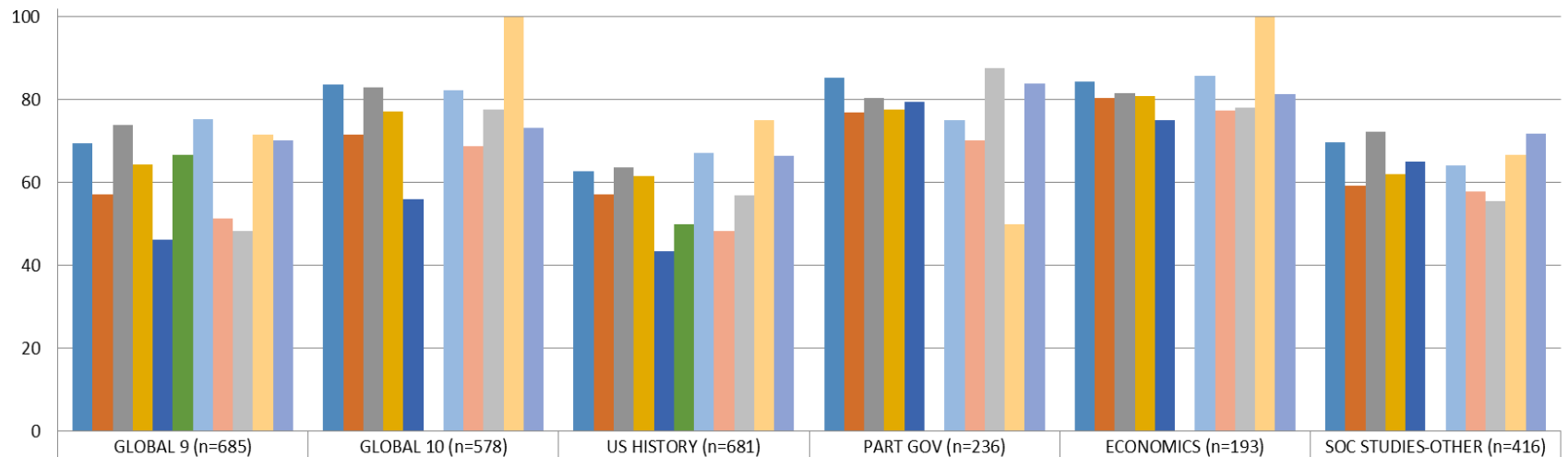
High School Students 1st Quarter Percent Passing by Regents Math Course



	ALGEBRA COMMON CORE (n=492)	REGENTS INT_ ALGEBRA (n=295)	REGENTS GEOMETRY (n=251)	REGENTS TRIGONOMETRY (n=153)
Pct Of Students	53.25	48.81	78.49	86.93
Pct Of FR	49.47	46.28	76.63	83.33
Pct Of Paid	65.25	60.38	83.58	92.98
Pct Of non-IEP	56.3	49.33	78.24	87.42
Pct Of IEP	39.08	47.22	83.33	50
Pct of Am. Indian	100			
Pct of Asian	64.71	52.94	81.82	83.72
Pct of Black	44.75	46.34	68.25	83.33
Pct of Hispanic	49.41	44.44	94.44	81.25
Pct of Mixed	42.86	25	0	100
Pct of White	59.85	55.56	80.43	92.73



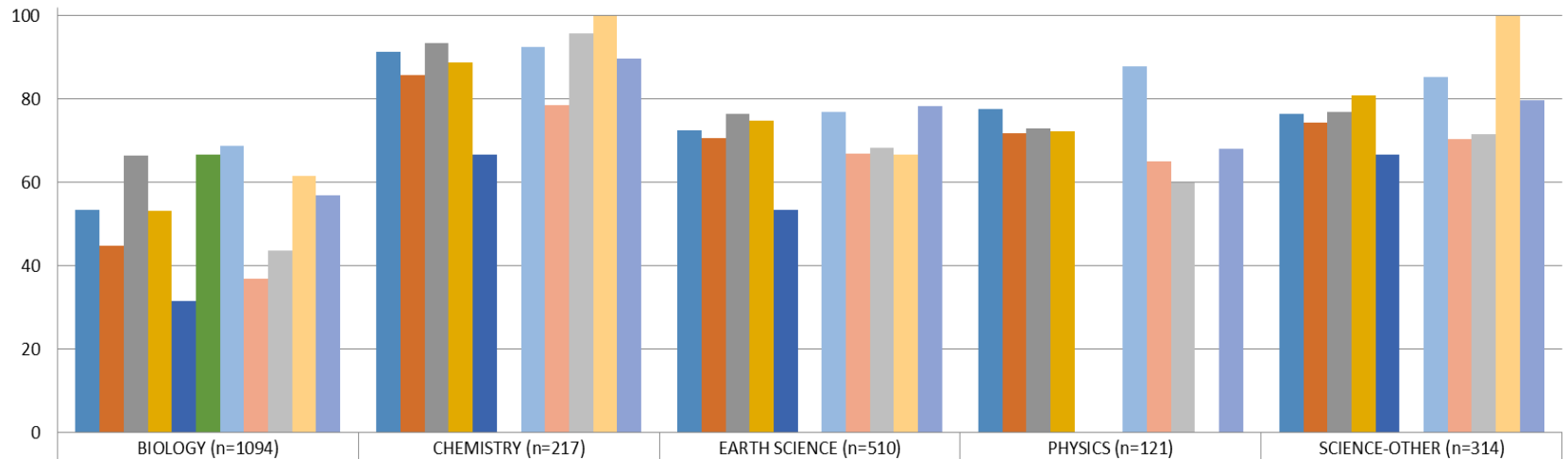
High School Students 1st Quarter Percent Passing by Social Studies Course



	GLOBAL 9 (n=685)	GLOBAL 10 (n=578)	US HISTORY (n=681)	PART GOV (n=236)	ECONOMICS (n=193)	SOC STUDIES-OTHER (n=416)
Pct Of Students	69.34	83.74	62.7	85.17	84.46	69.71
Pct Of FR	57.1	71.54	57.04	77.01	80.41	59.24
Pct Of Paid	73.89	82.99	63.54	80.28	81.48	72.13
Pct Of non-IEP	64.35	77.14	61.5	77.68	80.93	61.94
Pct Of IEP	46.21	55.91	43.48	79.41	75	65.05
Pct of Am. Indian	66.67		50			
Pct of Asian	75.34	82.17	67.14	75	85.71	64
Pct of Black	51.25	68.78	48.24	70.1	77.42	57.93
Pct of Hispanic	48.33	77.65	56.78	87.5	78.12	55.42
Pct of Mixed	71.43	100	75	50	100	66.67
Pct of White	70.09	73.1	66.34	83.91	81.25	71.74



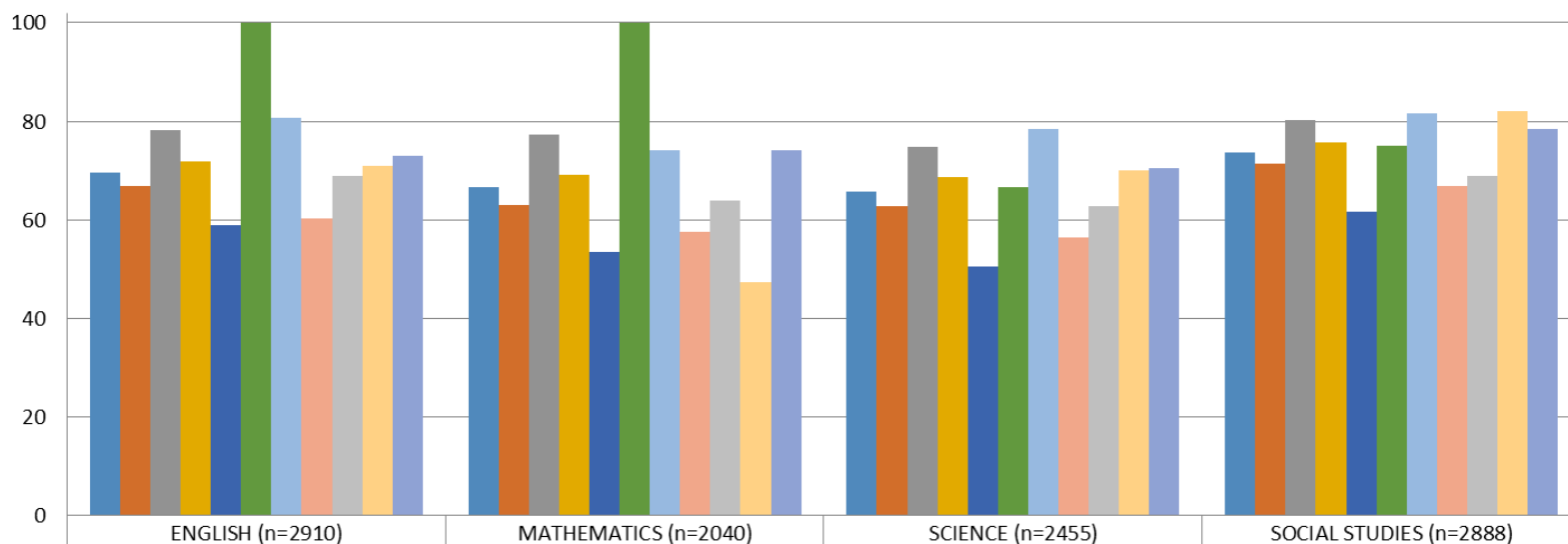
High School Students 1st Quarter Percent Passing by Science Course



	BIOLOGY (n=1094)	CHEMISTRY (n=217)	EARTH SCIENCE (n=510)	PHYSICS (n=121)	SCIENCE-OTHER (n=314)
Pct Of Students	53.47	91.24	72.55	77.69	76.43
Pct Of FR	44.88	85.81	70.7	71.83	74.35
Pct Of Paid	66.54	93.42	76.47	72.88	76.92
Pct Of non-IEP	53.26	88.69	74.89	72.31	80.87
Pct Of IEP	31.63	66.67	53.42		66.67
Pct of Am. Indian	66.67		0		
Pct of Asian	68.66	92.42	76.92	87.88	85.37
Pct of Black	36.94	78.57	67	65	70.42
Pct of Hispanic	43.56	95.65	68.29	60	71.43
Pct of Mixed	61.54	100	66.67		100
Pct of White	56.92	89.61	78.26	68.06	79.73



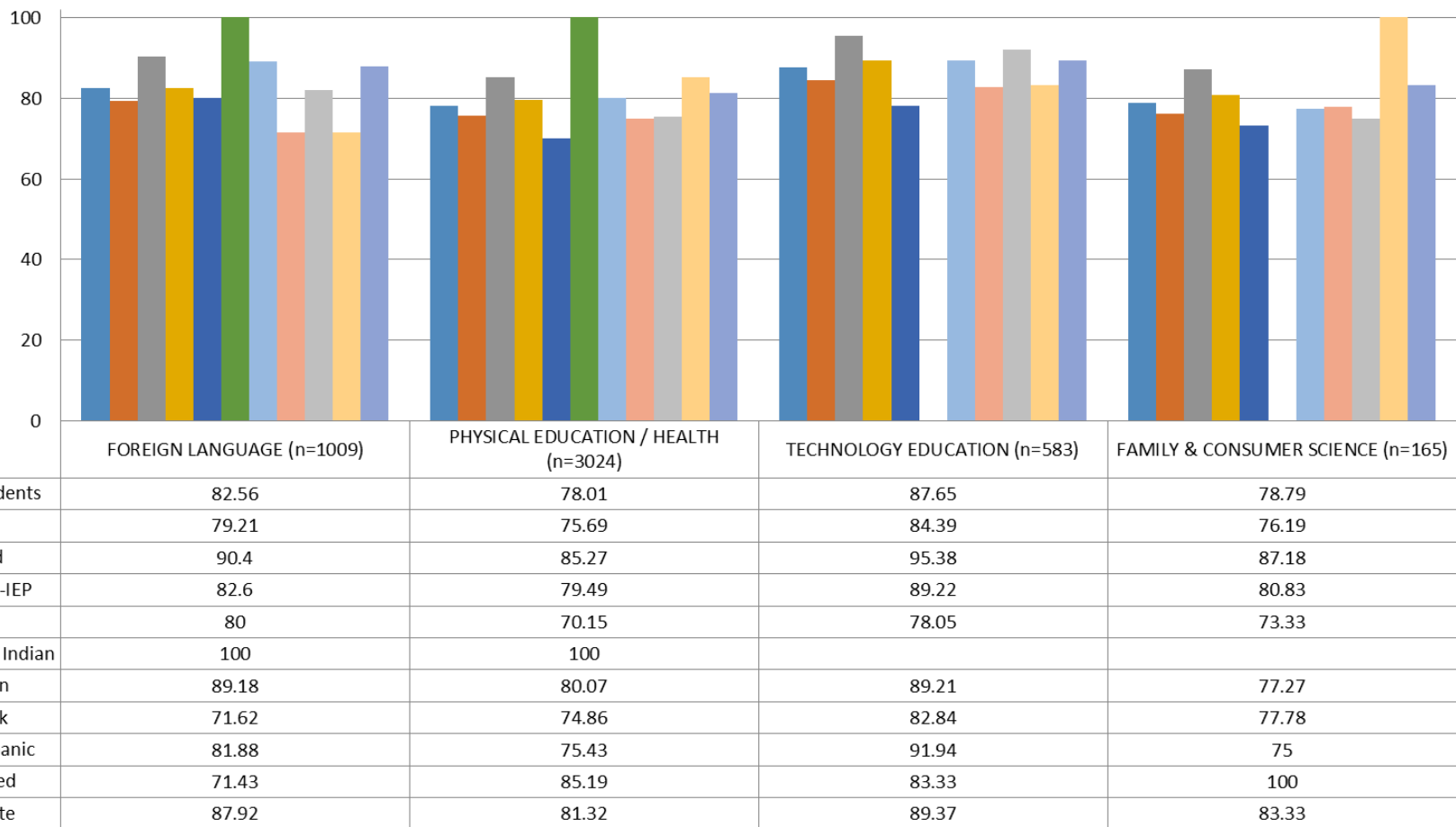
High School Students 1st Quarter Percent Passing by Department



	ENGLISH (n=2910)	MATHEMATICS (n=2040)	SCIENCE (n=2455)	SOCIAL STUDIES (n=2888)
Pct Of Students	69.45	66.72	65.7	73.58
Pct Of FR	66.74	63.05	62.85	71.45
Pct Of Paid	78.25	77.23	74.83	80.17
Pct Of non-IEP	71.73	69.05	68.66	75.68
Pct Of IEP	59	53.44	50.38	61.66
Pct of Am. Indian	100	100	66.67	75
Pct of Asian	80.71	74.01	78.49	81.56
Pct of Black	60.18	57.56	56.31	66.87
Pct of Hispanic	68.84	63.92	62.72	68.81
Pct of Mixed	70.83	47.37	70	82.14
Pct of White	72.98	74.06	70.53	78.53

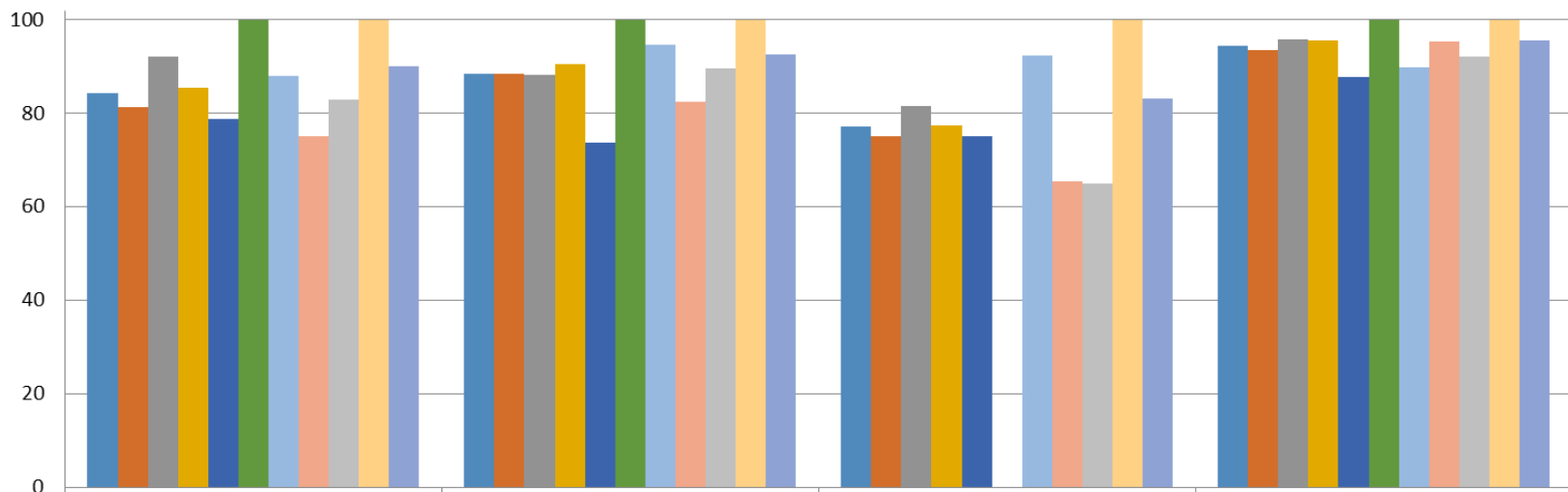


High School Students 1st Quarter Percent Passing by Department





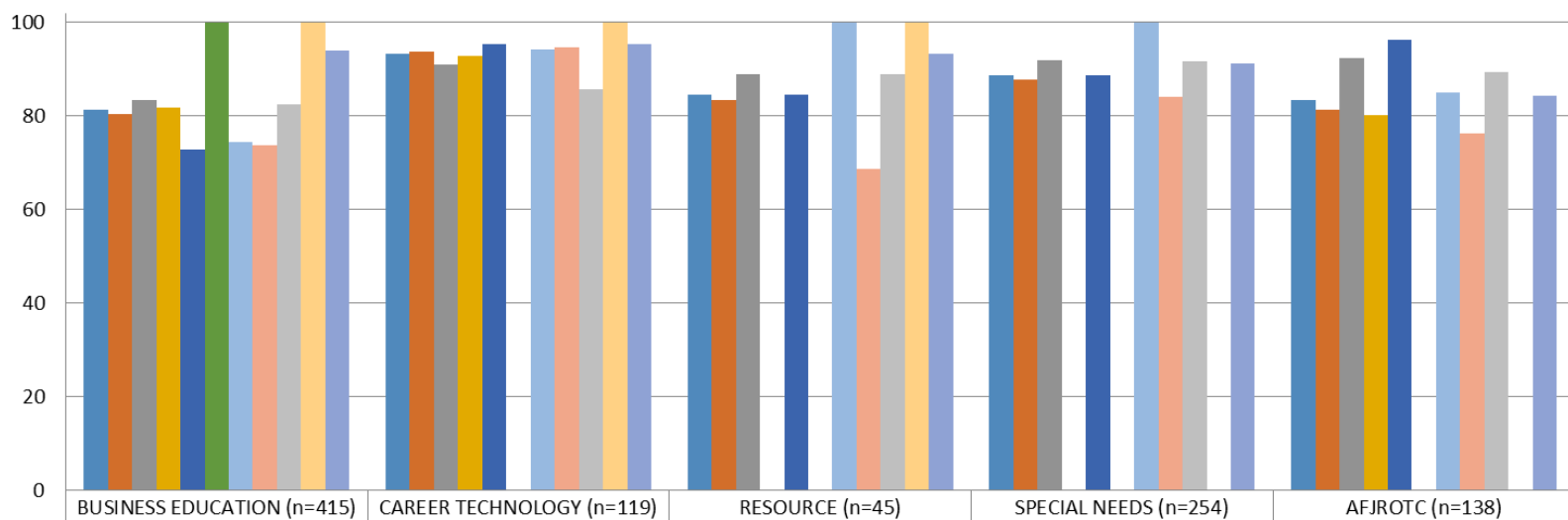
High School Students 1st Quarter Percent Passing by Department



	VISUAL ARTS (n=519)	DANCE (n=321)	MEDIA / THEATRE (n=179)	MUSIC (n=551)
Pct Of Students	84.2	88.47	77.09	94.37
Pct Of FR	81.32	88.52	75.2	93.61
Pct Of Paid	92.09	88.31	81.48	95.81
Pct Of non-IEP	85.41	90.46	77.36	95.53
Pct Of IEP	78.72	73.68	75	87.65
Pct of Am. Indian	100	100		100
Pct of Asian	87.91	94.64	92.31	89.87
Pct of Black	75.16	82.44	65.45	95.35
Pct of Hispanic	82.89	89.58	65	92.06
Pct of Mixed	100	100	100	100
Pct of White	89.95	92.59	83.12	95.67



High School Students 1st Quarter Percent Passing by Department



	BUSINESS EDUCATION (n=415)	CAREER TECHNOLOGY (n=119)	RESOURCE (n=45)	SPECIAL NEEDS (n=254)	AFJROTC (n=138)
Pct Of Students	81.2	93.28	84.44	88.58	83.33
Pct Of FR	80.39	93.81	83.33	87.8	81.25
Pct Of Paid	83.49	90.91	88.89	91.84	92.31
Pct Of non-IEP	81.68	92.78			80.18
Pct Of IEP	72.73	95.45	84.44	88.58	96.3
Pct of Am. Indian	100				
Pct of Asian	74.32	94.12	100	100	85
Pct of Black	73.72	94.59	68.75	84.03	76.19
Pct of Hispanic	82.54	85.71	88.89	91.67	89.47
Pct of Mixed	100	100	100		
Pct of White	93.97	95.35	93.33	91.25	84.21

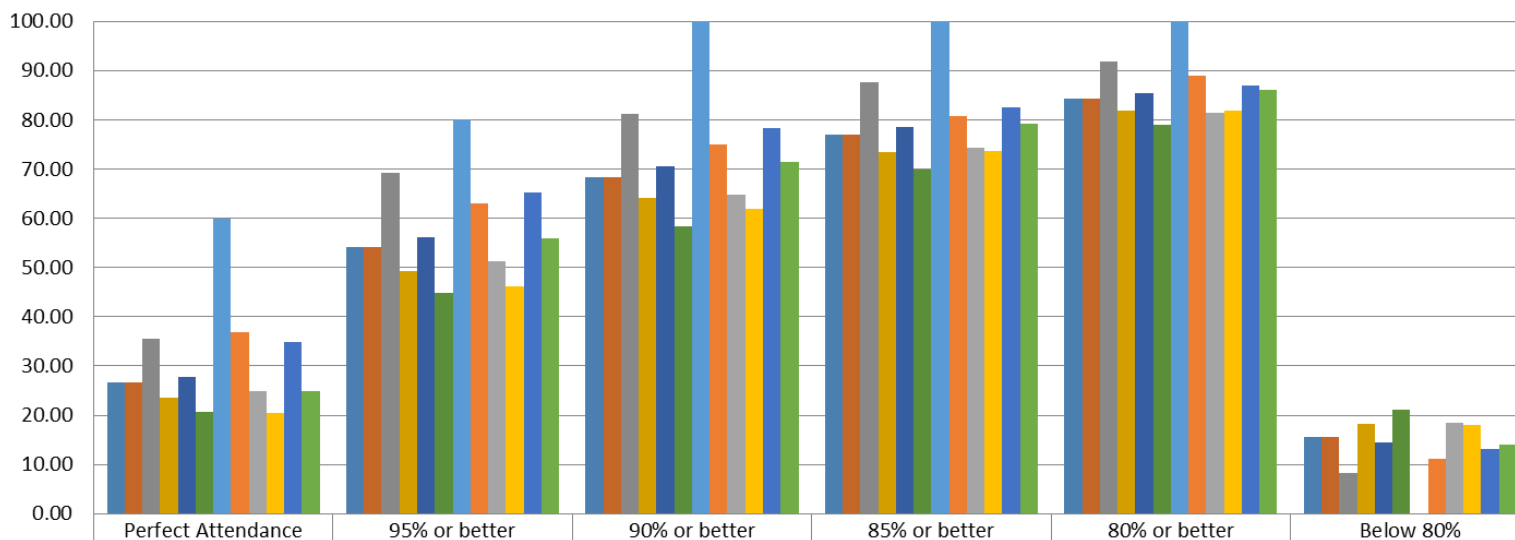


High School Students

1st Quarter

Attendance Data

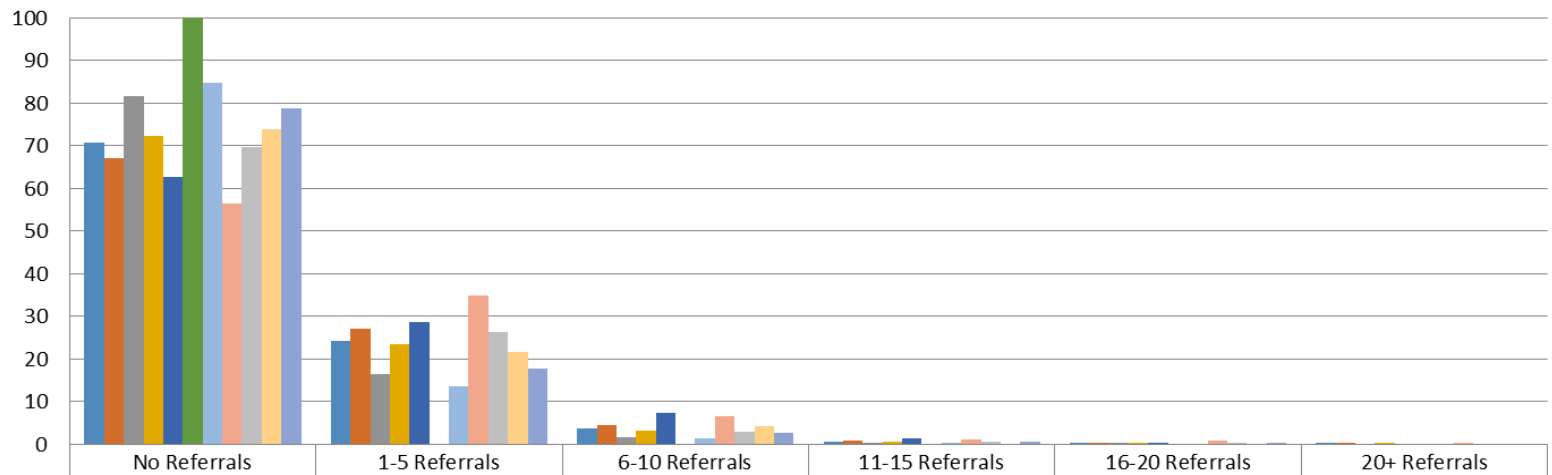
2014-2015



	Perfect Attendance	95% or better	90% or better	85% or better	80% or better	Below 80%
Pct of Students (n=2664)	26.61	54.24	68.43	77.03	84.38	15.62
Pct of Students (n=2664)	26.61	54.24	68.43	77.03	84.38	15.62
Pct of Paid (n=674)	35.46	69.14	81.16	87.54	91.84	8.16
Pct of F/R (n=1990)	23.62	49.2	64.12	73.47	81.86	18.14
Pct of Non-IEP (n=2219)	27.81	56.11	70.44	78.46	85.49	14.51
Pct of IEP (n=445)	20.67	44.94	58.43	69.89	78.88	21.12
Pct of Race: Am. Indian (n=5)	60	80	100	100	100	0
Pct of Race: Asian (n=496)	36.9	63.1	75	80.65	88.91	11.09
Pct of Race: Black (n=925)	24.97	51.24	64.76	74.38	81.51	18.49
Pct of Race: Hispanic (n=410)	20.49	46.1	61.95	73.66	81.95	18.05
Pct of Race: Mixed (n=23)	34.78	65.22	78.26	82.61	86.96	13.04
Pct of Race: White (n=805)	24.84	55.9	71.43	79.25	85.96	14.04



High School Students 1st Quarter Discipline Referral Data 2014-2015



	No Referrals	1-5 Referrals	6-10 Referrals	11-15 Referrals	16-20 Referrals	20+ Referrals
Pct of All (n=2657)	70.72	24.31	3.84	0.68	0.38	0.08
Pct of FR (n=1982)	67.05	26.99	4.59	0.81	0.45	0.1
Pct of Paid (n=675)	81.48	16.44	1.63	0.3	0.15	0
Pct of non-IEP (n=2216)	72.34	23.47	3.16	0.54	0.41	0.09
Pct of IEP (n=441)	62.59	28.57	7.26	1.36	0.23	0
Pct of Race: Am. Indian (n=5)	100	0	0	0	0	0
Pct of Race: Asian (n=497)	84.71	13.68	1.41	0.2	0	0
Pct of Race: Black (n=923)	56.45	34.99	6.5	1.08	0.76	0.22
Pct of Race: Hispanic (n=409)	69.68	26.41	2.93	0.73	0.24	0
Pct of Race: Mixed (n=23)	73.91	21.74	4.35	0	0	0
Pct of Race: White (n=799)	78.85	17.77	2.63	0.5	0.25	0



Questions??

